

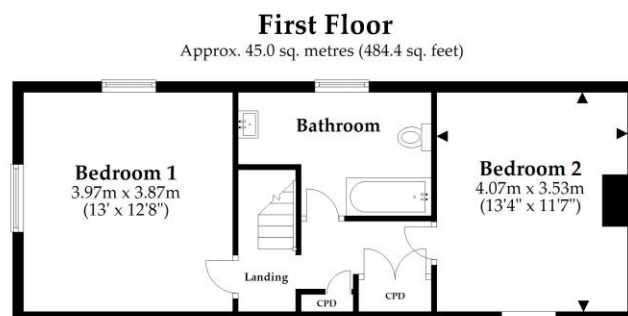
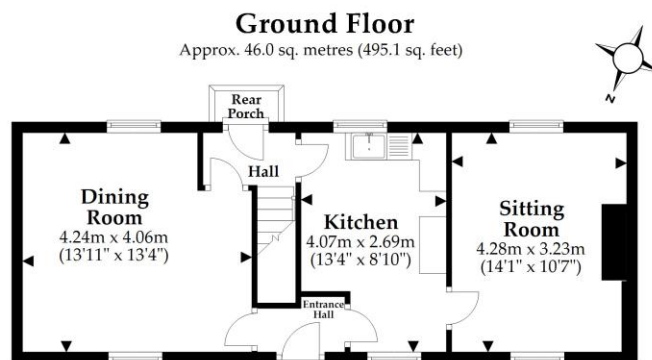
524 Pamphill Green Cottage  
Pamphill  
Dorset  
BH21 4EE

Ref: 003023  
Sleeps 4 + cot: One double, one twin



## Introduction

- This semi-detached cottage is in a quiet location on the Kingston Lacy estate. It is approximately 1.5 miles from Kingston Lacy House
- The cottage is located on a narrow / uneven track and care should be taken on the approach
- The cottage can accommodate four guests plus a cot
- There is a sitting room, kitchen, dining room, double bedroom, twin bedroom, and a bathroom
- There are sloping walls, beams, low ceilings, and doorways throughout
- There are night storage heaters, and also a wood burner in the front room
- From the rear garden there are wonderful views of the surrounding countryside



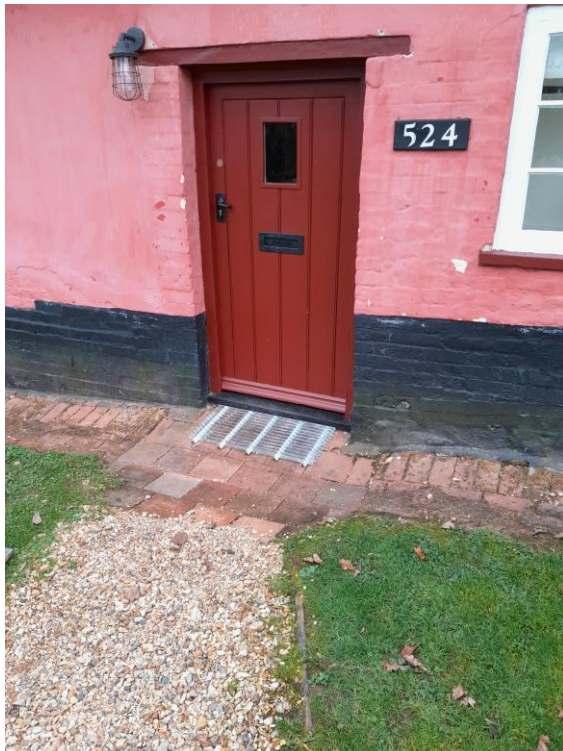
Total area: approx. 91.0 sq. metres (979.5 sq. feet)  
This plan is not to scale and it is for general guidance only

## Pre-Arrival

- See the main webpage for booking and location details
- Please contact us prior to booking if you have any specific access requirements
- Directions provided with booking

## Approach, arrival and parking facilities

- Approach the property along the narrow uneven track leading off the lane that runs through Pamphill village
- There is one allocated parking space for the property by the fence in front of the property, it is numbered 524. Additional parking is available in Pamphill at the end of the approach track.
- In front of the cottage there is a 10m gravel path that leads to the front door
- The front door is the main point of entry and opens into a small hall. The key is in the “key safe” on the left side wall of the cottage. Walk along the front of the property and through the side gate and the “key safe” will be facing you. It is at a height of 140cm
- Front door width is 78cm, height is 175cm. Door lock is at a height of 110cm



## Getting around the cottage

- The accommodation is on two levels: ground and first floor
- Ground floor: The entrance hall has a door on the right that leads to the kitchen, once inside there is a further doorway into the sitting room. On the left of the entrance hall is the door to the dining room. Through the kitchen is a rear hall in which there is another door into the dining room, a back door to the garden and the stairs to the first floor.
- First floor: The stairs are steep and lead to a landing from which both bedrooms and the bathroom are accessed.

## Entrance hall

- The front door opens into the entrance hall. On the right is the door to the kitchen, which once inside there is a further doorway into the sitting room. On the left is the door to the dining room.
- Quarry tile flooring
- Wall light located opposite to the front door
- Night storage heater on wall



## Sitting room

- Doorway width is 73cm, height is 169cm
- There is a step up into the room at a height of 19cm



- Carpet flooring
- Sofa seat is at a height of 44cm
- Two armchairs with arm rests and seat heights of 43cm high
- Four wall lights and two floor lamps
- Fireplace with wood burner
- There are two windows looking out to the front garden and back garden
- There is a night storage heater located under the front window

## Kitchen

- The doorway from the entrance hall into the kitchen has a width of 68cm and height of 74cm
- At the doorway there is a step up into the room at a height of 17cm
- There are two windows with views across the front and rear gardens
- Quarry tile flooring throughout
- Pillar taps
- Four ceiling recessed spotlights
- There is an electric oven and hob
- Height of the worktop is 92cm
- The doorway into the rear hall has a width of 63cm and height of 172cm



## Rear hall

- There are wooden stairs to the first floor
- There is a doorway into the dining room, the width is 72cm height is 161cm
- Back door into the garden has a doorway width of 78cm and height of 155cm

- Quarry tile flooring throughout
- Night storage heater by the back door



## Dining room

- Doorway width is 66cm, the height is 185cm
- There is a step up to the room at a height of 17cm
- Carpet flooring
- The table is 70cm high, with a knee clearance of 65cm
- The chair seat height is 44cm high
- Three wall lights; two double and one single
- Two windows looking out to the front garden and back garden
- There is a night storage heater located under the garden window and a portable electric radiator
- There is a blanket storage box



## Stairs and landing

- Wooden steep stairs
- Each step is approximately 18cm in height and 72cm wide
- There is a hall rail on the left side ascending
- The landing area is approximately 1 metre across and has a sloping ceiling
- The landing has three doors: two lead into the bedrooms and one to the bathroom



## Double bedroom

- Doorway width 77cm and a height of 176cm, however there is a section of the sloping ceiling restricting the top width to 52cm
- The ceiling slopes down on two sides of the room
- Double bed 5'150cm wide x 6'4"/195cm length x 24"/62cm high
- Clearance under the bed is 39cm
- There is a ceiling light and two beside lamps
- Rocking chair has a seat height of 39cm

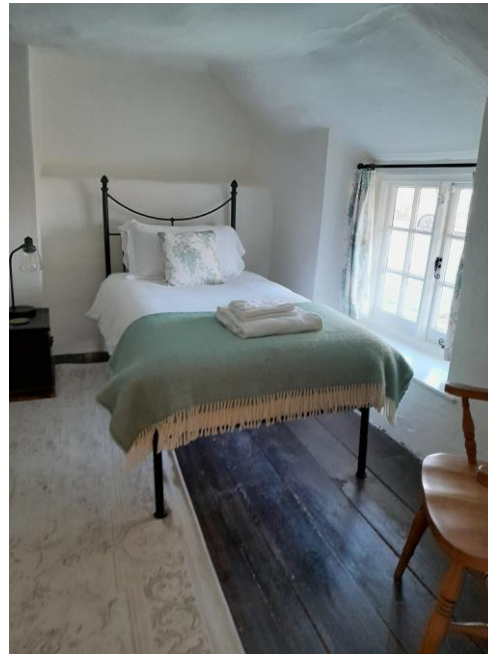
- There is a chest of drawers and two bedside tables
- Two windows with views over the garden and of trees
- There is a night storage heater located under window on the opposite wall as you enter the room
- There is a mobile radiator
- Wooden floorboards with a rug



## Twin bedroom

- Doorway width 68cm and a height of 170cm, step into room at height of 14cm
- Two single beds at a width of 3'92cm x 6'4"/195cm in length x 24"/62cm
- 34cm clearance under the beds, 1.5 meters between them
- One wall light and two bedside lamps
- Small half size wardrobe
- Sloping ceilings on both sides of the room and low ceiling (minimum height of 174cm in central section)
- Window with view of the front garden
- Wooden flooring with rug
- Chair with seat height of 43cm
- Storage heater on internal landing wall





## Bathroom

- Doorway width 60cm and a height of 167cm
- Wooden flooring
- Sloping ceilings over one side of room
- There is one window with views of the rear garden
- The toilet height is 45cm, the sink height is 74cm
- There is a shower attachment over the bath, the side of the bath is 61cm high
- Pillar taps in sink, pillar mixer tap in bath (and for shower control)
- Two wall lights
- Storage heater located on wall next to toilet





## Garden

- There is a porch over the back door with a width of 120cm and height of 187cm
- Seating in garden; table 1 has a height of 70cm with four chairs at a seat height of 42cm, table 2 has a height of 72cm with 4 fixed chairs at a seat height of 44cm
- Uneven sloping lawn
- A gate leading into the orchard



## Additional Information

- Dogs are allowed at this cottage
- In the event of a fire, it is the responsibility of the guest to evacuate themselves. Vibrating fire/smoke detectors are available at the time of booking. Please contact us if you have any specific requirements in this respect.

## Facilities at all cottages

The National Trust aims to expand the list of accessible /equipment/items available at each cottage and these may include

- Cordless kettle
- Chair with armrests
- Reading light
- Large handle vegetable peeler
- Easy tin opener
- Non-slip mat for bath/shower

- Information in alternative formats (on request)

Please note that we cannot guarantee that all items will be available at the time of your visit. Please enquire at the time of booking regarding any specific requests.

## Specialist equipment

Specialist equipment such as wheelchairs, may be available for loan or purchase from the local Red Cross loan centre. Please check the link below and contact us if you require further information.

[Hire or borrow a wheelchair | British Red Cross](#)

## Plan to improve access

- We are currently in the process of writing accessibility guides for all our holiday cottages with the aim to improve access over time for all our guests. All feedback is very helpful and we welcome any comments or ideas from you about access at this cottage. Please do this in the most convenient way for you, see contact details below or information on website. Thank you for assisting us with our improvements.

## About the Accessibility Guide

- This Accessibility Guide is intended to provide key information about the accommodation that may be particularly relevant to guests with disabilities. Please contact us prior to booking if you would like information that is more specific to your needs. We will be happy to help.  
Email: [cottages@nationaltrust.org.uk](mailto:cottages@nationaltrust.org.uk)  
Phone: 0344 8002070

## Access for all

- The National Trust Access for All office works to improve access at our accommodation and properties. The office welcomes comments and ideas on improving access.  
Phone: 01793 818531  
Email: [accessforall@nationaltrust.org.uk](mailto:accessforall@nationaltrust.org.uk)

January 2022