

National Trust Cottages Accessibility Guide

Serpentine
Inglewidden
Cadgwith
Helston
TR12 7LA

Ref: 011045



Introduction

Part of the former Inglewidden Farm complex, Serpentine is a traditional, stone-built, detached farm building converted into a single-storey holiday cottage. The Southwest Coast Path runs along the edge of the Inglewidden site. Under 100 metres away is the viewpoint for the well-known local landmark, *The Devil's Frying Pan*, a former sea cave where the roof has partially collapsed leaving a natural bridge across the cove.

There are four other National Trust holiday cottages in the area.

The cottage layout is as follows:

Ground Floor: Kitchen, Sitting/dining room, Inner hall, Shower room, Single bedroom, Twin bedroom.

Pre-Arrival

- See the main webpage for booking and location details.
- Please contact us prior to booking if you have any specific access requirements.
- Directions provided with booking

Arrival & Parking Facilities

Serpentine can be found off the main road to Cadgwith down a single lane country road. There are many twists and turns but also quite a few passing places.



From the main road from Helston to The Lizard A3083 turn off right following signs for residential area of Grade. At the fork turning take the track signposted for *Polgwith, The Devil's Frying Pan and Inglewidden*. The grey National Trust sign indicates you are in trust property and Serpentine forms part of the cluster of holiday cottages in the area. There is communal parking available centrally.

Getting in and out of the cottage

Paving slabs lead the way across a grass area to a gate. The gate is pre-set to open up to 2200mm wide for pedestrian access only. There are slate tiles laid along the front of the cottage forming a pathway to the front door and a patio. The combination key safe is on the wall to the left of the front door.

There is an outside light, but we recommend you bring a torch with you.

There is no step up to the front door but inside is a gentle slate slope up to the kitchen floor.



Getting around the cottage

- Front door opens to kitchen
- One door to sitting/dining room and one to inner hall
- Inner hall has three solid wooden doors off to: shower room, single bedroom and twin bedroom

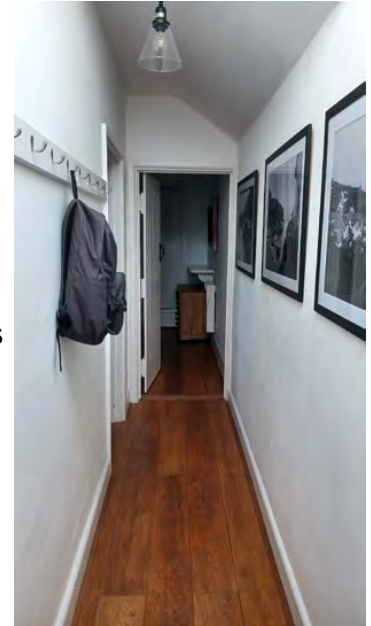
Kitchen – single aspect



- 710mm wide wooden stable type door with bubble window opens inwards to kitchen
- Small upward slope of slate tiles in entrance changing to vinyl tile effect flooring in main kitchen
- Rointe wall mounted electric heater
- Six recessed downlights on a two-way switch
- Sash window with deep sill
- Floor cupboards and drawers under 900mm high worktop
- White, shiny Formica worktop with slight glitter effect
- Wall cupboards 380mm high above worktop
- Small dishwasher
- Washer/Dryer, Microwave, Toaster Kettle
- Under counter fridge and separate under counter freezer
- Wall mounted coat rack with three hooks
- Doors to sitting room and inner hall

Inner hall with roof light

- Solid wooden door 700mm wide opening from kitchen
- Wood panel flooring
- Ceiling light on two-way switch
- Glazed roof light
- Wall mounted coat rack with eight hooks
- Solid wooden doors to shower room, single and twin bedrooms



Shower room – single aspect



- 690mm wide doorway opening inwards from hall
- Vinyl flooring
- Ceiling light. Light above mirror with shaver socket
- Sash window with deep sill
- Electric towel rail
- Electric shower in cubicle (750mm wide x 650mm deep and a 230mm step up)
- Low level WC with 420mm seat height
- Wash basin 940mm high

Single bedroom – single aspect



- 690mm wide doorway opening inwards from hall
- Wood panel flooring with bedside rug
- Ceiling light. Bedside lamp
- Rointe wall mounted electric heater
- Sash window with deep sill
- Chest with three drawers (670mm x 520mm x 400mm)
- Wooden chair seat height 470mm
- Built in wardrobe 500mm wide
- Single bed (900mm wide x 2000mm long x 600mm high)

Twin bedroom – single aspect



- 690mm doorway opens inwards from hall
- Wood panel flooring with bedside rug
- Ceiling light
- Bedside lamp
- Rointe wall mounted electric heater
- Sash window with deep sill
- Four drawer wooden chest (800mm wide x 410mm deep x 700mm high)
- Bedside table with three drawers (520mm wide x 420mm deep x 670mm high)
- Built in wardrobe 1300mm wide
- Twin beds (2000mm long x 1000mm wide x 600mm high)

Sitting/dining room – dual aspect



- 680mm wide doorway opens inwards from kitchen
- Wood panel flooring with hearth rug
- Table lamp and standard lamp
- Six recessed downlighters
- Rointe wall mounted electric heater
- Wood burner in chimney recess
- Sash window with deep sill to front aspect
- Pair of fixed window panes with deep sills to side aspect
- Wooden dining table (1240mm x 900mm x 800mm)
- Three wooden dining chairs (seat height 460mm)
- Round side table (610mm diameter x 470mm high)
- Two seater sofa with seat height 440mm
- Pair of wing back armchairs (440mm seat height)
- Wooden storage box/coffee table (890mm long x 550mm deep x 580mm high)
- Small bookcase
- TV and DVD player

Garden



- Sea views
- Grassed lawn to front slopes gently away
- Picnic table (bench height 430mm table height 770mm) and rotary dryer on slate tiles patio area immediately in front of cottage

Additional information

- Assistance dogs welcome at all our cottages
- In the event of a fire, it is the responsibility of guests to evacuate themselves. Vibrating fire/smoke detectors are available if requested at time of booking. Please contact us if you have any other specific requirements in this respect.

Facilities at all cottages

The National Trust aims to expand the list of accessible /equipment/items available at each cottage and these may include

- Cordless kettle
- Hollowfibre bedding
- Chair with armrests
- Good reading light
- Large handle vegetable peeler
- Easy tin opener
- Non-slip mat for bath/shower
- Non-slip place mat
- Easy jar opener
- Information in alternative formats (on request)

Please note that we cannot guarantee that all items will be available at the time of your visit. Please enquire at the time of booking regarding any particular requests.

Specialist equipment

Other specialist equipment such as wheelchairs, bath seats, toilet frames etc may be available for loan or purchase from the local Red Cross loan centre. Please check this out before booking the Cottage and contact us if you require further information.

<https://www.redcross.org.uk/get-help/borrow-a-wheelchair>

<https://www.redcross.org.uk/get-help/hire-a-toilet-aid>

Future Plans to improve Access to National Trust Holiday Accommodation

- We are currently in the process of writing accessibility guides for all our holiday cottages and bunkhouses and improving access over time for all our guests. All feedback is very helpful in informing us of ways in which we can improve access. We welcome any comments or ideas from you about access at this cottage and thank you for taking the time to do this. Please do this in the most convenient way for you. See contact details below or information on website.

About the Accessibility Guide

- This Accessibility Guide is intended to provide key information about the accommodation that may be particularly relevant to guests with disabilities. Please contact us prior to booking if you would like information that is more specific and we will be happy to oblige.
Email: holiday.enquiries@nationaltrust.org.uk
Phone: 0344 8002070

Access for All at the National Trust

- The Access for All office works to improve access at all National Trust accommodation and properties. The office welcomes comments and ideas on improving access.
Phone: 01793 818531
Email: accessforall@nationaltrust.org.uk

February 2024