

National Trust Cottages Accessibility Guide

South Wing (006012)
Hanbury Hall Droitwich
Worcestershire
WR9 7EA



Introduction

- South Wing is an apartment on the second floor of Hanbury Hall. The apartment is on the south side of the property.
- Hanbury Hall was built in 1701 and is a William and Mary style red brick house; the guests have the benefit of enjoying the gardens and grounds when it is shut to the public.

The Cottage is arranged as follows:

Second Floor:

- Hallway, sitting room, kitchen, bathroom, double bedroom (can be made into a twin)

Pre-Arrival

- See the main webpage for booking and location details.
- Please contact us prior to booking if you have any specific access requirements.
- Directions provided with booking

Arrival & Parking Facilities

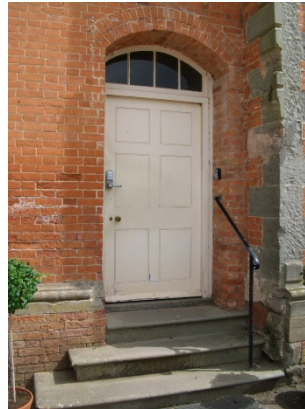
- From the main road, you access the hall from the delivery driveway, just past the main car park.
- You will come up to a wooden gate with entry panel on the right side, you just need to drive up to the panel, press in the code you will be given and press enter. The gate will then automatically open, and will automatically close behind you.
- Follow the driveway to the house; it is about half a mile from the road to the parking area, you will pass over another cattle grid.



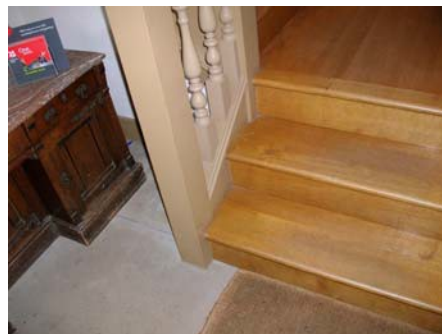
- As you come to the back of Hanbury Hall, you will see the red graveled parking area in front of you, there is a designated parking spot marked. Please make sure you park in front of this sign.



- You will then need to walk to the back of the property, follow the drive through the wooden gates, please leave them as you find them. They are large double opening gates.



- It is a level tarmac surface with loose stones at the back of Hanbury Hall and is 30 metres to the entry door from the parking area.
- There are three stone steps up to the door, they are all fairly wide, the highest being 180mm and there is also a metal hand rail on the right hand side of these stairs.
- The keysafe is on the right of the door with roller dials to open. Inside you will get a code to open the exterior door and a key for the internal door, you press the numbers into the keypad on the door handle and then press the handle down to open.
- There is a further wooden step to inside which is 70mm high. The door opens inwards with an opening of 1050mm.
- Once through the door there is a small hall with stone flooring with a mat, there are stairs from the hall, these are wooden, once at the first floor, the stairs then have a carpet runner down the middle.



- The stair case is 780mm wide and spirals up, with small landings joining each small staircase all the way up so that the staircase can turn 90 degrees each time. There are a total of 49 steps, as you go onto the first floor there is a larger landing.
- There is banister rail all the way up on the left hand side and the highest step is 180mm.



Getting in (and out) of the cottage

- There is one door into the apartment, this has an opening of 830mm,

Getting around the cottage

Second floor:

- The apartment is on one level, but due to the age of the property the flooring is uneven in places.
- The front door opens to the hallway. There is a door at the end to the double bedroom.
- By the front door is a doorway to the sitting room, this has a further door to another small hall, there are two doors off this, one to the kitchen, the other to the bathroom.
- All internal doors are between 720mm - 760mm.



Sitting Room

- One sofa with a seat height of 460mm
- One armchairs with a seat height of 460mm
- Television with inbuilt DVD player provided



Kitchen

- Height of worktop is 910mm
- Electric cooker
- Microwave, fridge with ice box, cordless kettle and toaster



Bathroom

- WC, basin and bath with shower attachment on taps
- The WC is 430mm high with a standard flush.
- The sink is 790mm high with standard separate turn taps for hot and cold water.
- The bath is 600mm high from the floor, it is 1510mm long, 580mm wide and has a depth of 380mm. There is a combination tap with separate turn taps for hot and cold water and a shower attachment.
- The roof does slope in the bathroom above the bath so there is no standing room in the bath.



Bedroom

- Double bed with 1500mm (5ft) zip and link mattress, can be made as two single beds 740mm (2ft 5') wide
- Bed height 640mm
- The bedroom is spacious

Additional Information

- Assistance dogs are welcome at all our cottages
- In the event of a fire, it is the responsibility of the guests to evacuate themselves. Vibrating fire/smoke detectors are available if requested at time of booking. Please contact us if you have any other specific access requirements in this respect.

Facilities at all cottages

The National Trust aims to expand the list of accessible /equipment/items available at each cottage and these may include

- Cordless kettle
- Hollow fibre bedding
- Good reading light
- Non-slip mat for bath/shower
- Non-slip place mat
- Information in alternative formats (on request)

Please note that we cannot guarantee that all items will be available at the time of your visit. Please enquire at the time of booking regarding any particular requests.

Specialist equipment

Other specialist equipment such as wheelchairs, bath seats, toilet frames etc may be available for loan or purchase from the local Red Cross loan centre. Please check this out before booking the Cottage and contact us if you require further information.

<http://www.redcross.org.uk/standard.asp?id=89425>

Future Plans to improve Access to NT Holiday Cottages

- We are currently in the process of writing accessibility guides for all our holiday cottages and improving access over time for all our guests. All feedback is very helpful in informing us of ways in which we can improve access to all our cottages. We welcome any comments or ideas from you about access at this cottage and thank you for taking the time to do this. Please do this in the most convenient way for you. See contact details below or information on website.

About the Accessibility Guide

- This accessibility guide is intended to provide key information about the cottage that may be particularly relevant to guests with disabilities. Please contact us prior to booking if you would like information that is more specific and we will be happy to oblige.

Email: cottages@nationaltrust.org.uk

Phone: 0344 8002070

Access for All at the National Trust

- The Access for All office works to improve access at all National Trust cottages and properties. The office welcomes comments and ideas on improving access.

Phone: 01793 818531

Email: accessforall@nationaltrust.org.uk

Date: May 2017