

# National Trust

## National Trust Cottages Accessibility Guide

**Apartment name: Squires Loft**

**Address: Felbrigg Hall, Cromer Road, Felbrigg Norfolk NR11 8PR**

**Ref: 011020**

### Introduction



Squire's Loft sits above the old stable block just to the side of the grand Felbrigg Hall. You'll be in the midst of life of the estate with the busy restaurant just below and views of the sweeping parklands visible from your windows. Built in the neo-Jacobean style in the 17<sup>th</sup> century, the two bedroom apartment is brimming with original character. Timber cruck ceilings run throughout the open plan living and kitchen area.

### Pre-Arrival

- See the main webpage for booking and location details.
- Please contact the Contact Centre 0844 800 2070 prior to booking if you have any queries or specific access requirements.
- Directions are provided with the booking.

### Approach

- Enter the Felbrigg Hall estate through the main gates. Follow the drive to the main car park. Carry on through the car park and take the drive to the right leading to the back of

the Hall. The apartment is located at the top of the second black iron spiral staircase on the left. Squires Loft is found on the left at the top of the spiral staircase.

## Arrival & Parking Facilities

- The parking is in front to the right of the spiral staircase (as signposted)

## Getting in (and out) of the apartment



- The apartment is accessed via a wrought iron spiral staircase
- First step is 100mm height thereafter each stair is 190mm height with 20 steps to first landing
- Concrete step 190mm height, 320mm depth and 160mm step down to decking/landing area
- The apartment is on the left of the landing area
- Key safe to right of the doorway
- Doorway 780mm width
- Threshold -wooden step 120mm height, 160mm depth
- Coir matting to doorway

## Getting around the apartment

Ground Floor – apartment all on one level

### Sitting Room



- Spacious room
- Carpet to floor
- 1 sofa and two chairs 450mm seat height
- Coffee table 460mm height
- Corner tv cabinet with flat screen tv and remote/dvd player/video player 600mm height
- Wooden chest
- Inbuilt bookshelf
- Double aspect windows
- Angled spotlights

### Dining area

- Dining table 770mm height
- 4 dining chairs seat height 440mm





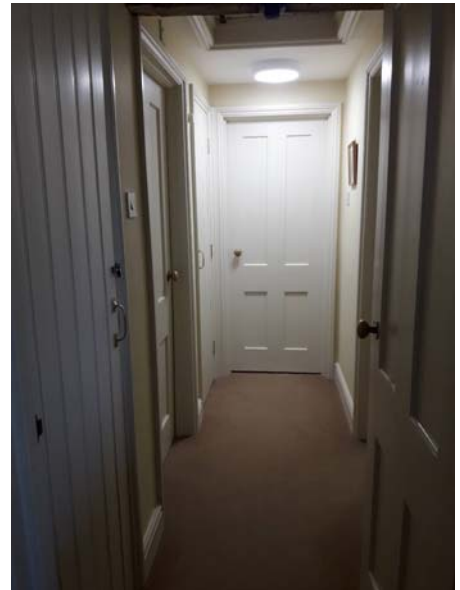
## Kitchen area

- 870mm entry to kitchen
- Vinyl flooring
- Carpet tread threshold
- Range of floor cabinets 900mm height
- Range of eyelevel cabinets 1320mm height
- Under counter fridge
- Electric oven with integrated grill/hob top
- Washing machine/ Dishwasher/microwave/ cordless kettle/toaster
- Mixer tap to sink



## Doorway leading to hallway

- Doorway width 740mm with carpet tread to threshold



## Bedroom One

- Doorway width 740mm with carpet tread to threshold
- Carpet to floor
- Twin pine framed single beds 2000mm length, 1000mm width, 520 height
- 750mm clearance between beds
- Dressing table with mirror over 880mm height
- Chair 440mm seat height
- Wardrobe
- Bedside cabinet with lamp 460mm height
- Spotlights



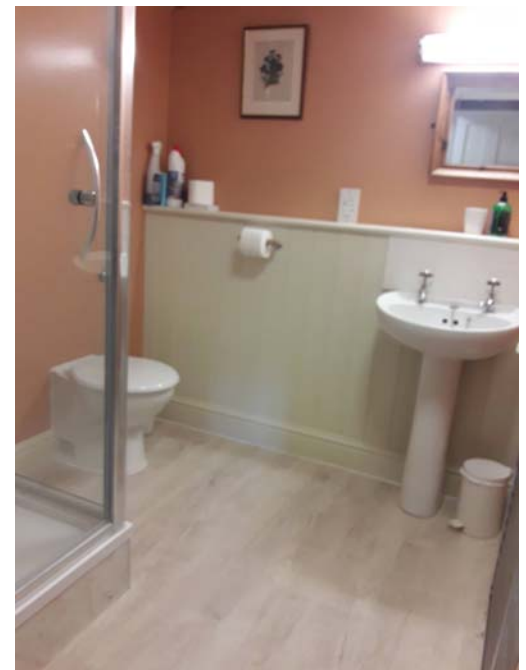
## Master bedroom



- Doorway 740mm width with carpet tread to threshold
- Carpet to floor
- Pine bed 2000mm length, 1550 width, 600mm height
- 2 bedside cabinets with lamps 610mm height
- Linen basket
- Fire escape door
- Dressing table with mirror 820mm height
- Occasional chair 450mm seat height
- Wardrobe
- Chest of drawers 770mm height
- Spotlights

## Doorway to ensuite

- Doorway 740mm width
- Carpet tread to threshold
- Vinyl flooring
- Heated towel rail
- Shower cubicle 270mm external height of step into shower, 800mm internal height of step into shower
- 550mm max width of entry to shower
- 1100mm to shower control
- 1300mm to lowest height of shower height
- Wash basin 800mm height
- Turn handle taps
- Low level wc 400mm to seat
- Central light with light over wash basin



## Bathroom

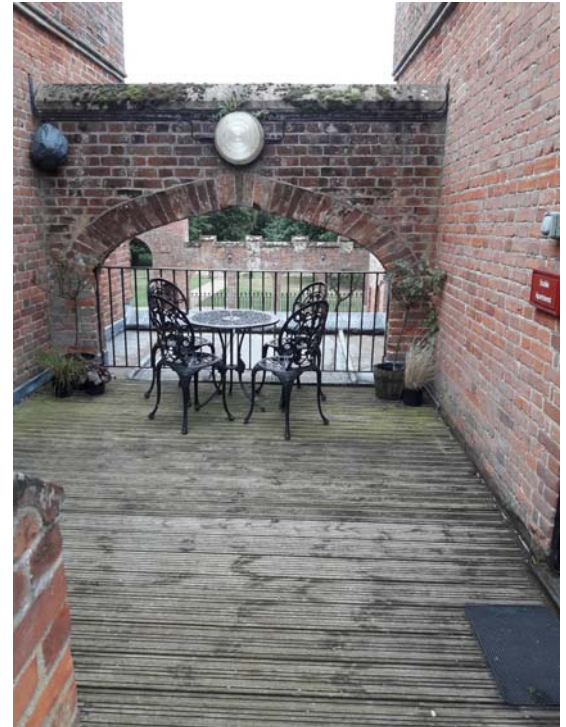
- Doorway to bathroom 740mm with carpet tread to threshold
- Vinyl flooring
- Bath with shower over and grab handles
- External height of bath 600mm, internal length 1400mm, internal depth 380mm
- Mixer shower taps
- 1800mm to shower attachment on wall
- Shower screen to bath
- Wash basin 800mm height
- Turn handle taps
- Low level wc 400mm to seat height
- 1300mm inbuilt shelf with shaver socket over and vanity mirror



- Central light and light over wash basin

## Garden

- There is a shared decking area overlooking the garden centre below with garden furniture



## Additional Information

### Facilities at all cottages

The National Trust aims to expand the list of accessible /equipment/items available at each cottage and these may include

- Cordless kettle
- Hollowfibre bedding
- Chair with armrests
- Good reading light
- Large handle vegetable peeler
- Easy tin opener
- Non-slip mat for bath/shower
- Non-slip place mat
- Easy jar opener
- Information in alternative formats (on request)

Please note that we cannot guarantee that all items will be available at the time of your visit. Please enquire at the time of booking regarding any particular requests.

## Specialist equipment

Other specialist equipment such as wheelchairs, bath seats, toilet frames etc may be available for loan or purchase from the local Red Cross loan centre. Please check this out before booking the Apartment and contact us if you require further information.

<http://www.redcross.org.uk/standard.asp?id=89425>

## Future Plans to improve Access to National Trust Holiday Accommodation

- We are currently in the process of writing accessibility guides for all our holiday cottages and bunkhouses and improving access over time for all our guests. All feedback is very helpful in informing us of ways in which we can improve access. We welcome any comments or ideas from you about access at this apartment and thank you for taking the time to do this. Please do this in the most convenient way for you. See contact details below or information on website.

## About the Accessibility Guide

- This Accessibility Guide is intended to provide key information about the accommodation that may be particularly relevant to guests with disabilities. Please contact us prior to booking if you would like information that is more specific and we will be happy to oblige.  
Email: [cottages@nationaltrust.org.uk](mailto:cottages@nationaltrust.org.uk)  
Phone: 0344 8002070

## Access for All at the National Trust

- The Access for All office works to improve access at all National Trust accommodation and properties. The office welcomes comments and ideas on improving access.  
Phone: 01793 818531  
Email: [accessforall@nationaltrust.org.uk](mailto:accessforall@nationaltrust.org.uk)

Date September 2019