

National Trust Cottages Accessibility Guide

The Birdcage

11 Rose Hill

Port Isaac

Cornwall



Cottage Ref: 011084

Introduction

- The Birdcage is a three-storey, pentagonal, stone-built cottage which is listed under our Unique Collection of holiday cottages due to its extraordinary size and shape.
- The cottage is situated on a steep hill and enjoys a sunny aspect from the first and second floor with view over Port Isaac and the harbour.
- The stairs to both floors are very steep and very narrow and the pedestrian lane down to the cottage is steep.
- There are varying heights throughout the cottage ranging from 5'3" (1600mm) to 6'3" (1950mm) from floor to ceiling.
- The cottage has eco-radiators, a wood burning stove in the sitting room, an oil filled portable radiator and a heated towel rail in the bathroom.
- In the event of power failure emergency lighting is provided on all levels and a sprinkler system is in place as a fire precaution.

The accommodation comprises the following:

- The cottage is on three floors.

- The ground floor comprises kitchen and bathroom. There is a door off the kitchen to the bathroom which then has a door with low headroom leading to the terrace. The stairs to the first floor are partly open plan from the kitchen.
- The sitting room is on the first floor and the double bedroom with 5'1500mm bed occupies the second floor.

Pre-Arrival

- See the main webpage for booking and location details.
- Please contact us prior to booking if you have any specific access requirements.
- Directions provided with booking.
- There is no individual chair with arm rests in The Birdcage.

Arrival & Parking Facilities

- There are no parking facilities at the cottage. Access to the cottage is by foot only. If mobile phone signal is good, it may be possible to pull up a map of Port Isaac to help you find the cottage.
- There are two main car parks in Port Isaac which can get very full in high season. The nearest car park is to the north of the village and overlooks the sea. There is a Pay and Display machine where daily and weekly tickets can be purchased. This car park is on different levels and has two entrances. The bottom level can only be accessed from the second entrance which is further along the road towards Port Gaverne.



Nearest car park



Pedestrian footpath

- From the coastal car park, walk back towards the village to the junction with Back Hill. There is a narrow pedestrian footpath on the left. This leads between the houses and down a flight of slate steps with a handrail onto Trewetha Lane. Cross straight over into Margaret's Lane which leads down to The Birdcage. There is no lighting in Margaret's Lane and at certain times of year there will be a covering of fallen leaves which could be slippery.



Path between houses



Steps to Trewetha lane



Entrance to Margaret's Lane



Margaret's lane tree tunnel



Approach to The Birdcage

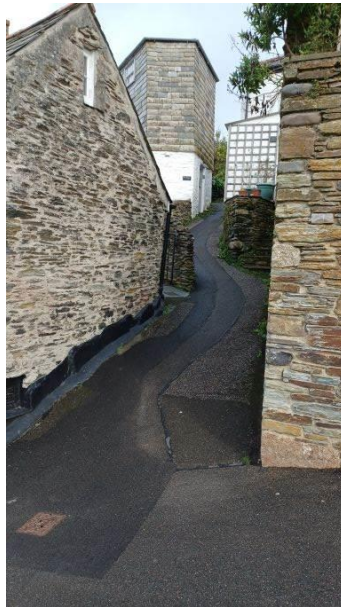


The Birdcage front door

- To avoid the steps on the first footpath, walk to the bottom of Back Hill until you reach the harbour, walk along to the left until you reach Rose Hill. The Birdcage is a little way up Rose Hill and off a steep path to the left. This route to The Birdcage is a little further than the route via Margaret's Lane.



Rose hill from The Harbour



Steep lanes to The Birdcage



- The main car park in Port Isaac is the first one you come to as you approach the village. It is a little further from the cottage than the coastal car park. On foot from the main car park, follow the road towards the village and then go down Trewetha Lane and onto Rose Hill. Near the bottom of Rose Hill is a steep lane leading up to the right. Take this lane and the Birdcage will be found on the left-hand side.



Lane on the left is Trewetha lane, leading towards Rose Hill

Getting in (and out) of the cottage

- The entrance door is accessed immediately from the alleyway.
- The key safe is on the wall to the right of the front door at a height of 1400mm. It is operated by a combination lock mechanism where the dials need to be turned to the cottage combination code. A torch is recommended, especially if arriving in the dark, as the numbers on the lock can be difficult to see. There is a sensor light above front door of The Birdcage. There is also a sensor light on the opposite building which helps in the dark.
- The entrance door has a clear opening width of 700mm.
- There is a wooden threshold up into the cottage which measures 20mm high.
- The light switch is on the right-hand side at a height of 1340mm.
- There is a coir mat in a floor well just inside the front door.
- The door to the terrace is low with a deep step down from the bathroom to open the terrace door.



Front door



Door to terrace from the bathroom

Getting around the cottage

Ground floor:

- The front door opens immediately into the kitchen.
- At the opposite end of the kitchen there is a door to the bathroom.
- This door has a maximum opening width of 480mm, a height of 1650mm and a threshold of 20mm.
- There is a deep step of 160mm from the bathroom down to an external door to the terrace.
- This door has a clear opening width of 550mm and low headroom of 1350mm.

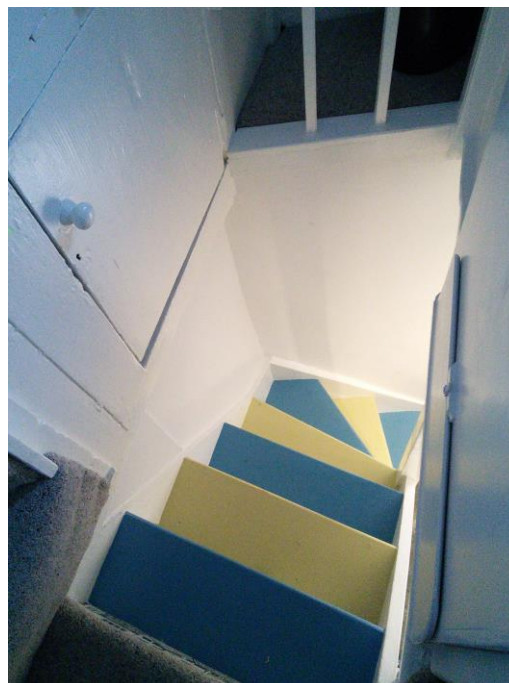
- Floor coverings are stone in the kitchen, and wood effect flooring in the bathroom.
- Stairs are open plan from the kitchen.
- An under stairs cupboard in the kitchen is used for storage and has the consumer unit and electricity meter within. This cupboard is low with a height of 1000mm. To access the consumer unit, please call the Contact Centre who will arrange for a contractor or our staff to attend.

First Floor:

- Stairs to first floor are 430mm wide at the narrowest point.
- There is a light switch at the bottom of the stairs on the right-hand side.
- There are no handrails, but you depend on the newel post at the bottom of the stairs on the left-hand side to take you up the first few steps and then hands and knees to the top. A gate is at the top of the stairs which closes off all but the last step of the stairs. This gate will be found open but should then be closed when using the first and second floor.
- The area before the door to the stairs is only 340mm wide.
- There is a total of 8 steps to the sitting room.
- The narrow stairway to first floor has painted wood treads and decorative risers.
- The head height to the beam from the second stair is just 1440mm.



Bottom of stairs from kitchen



Looking downstairs from first floor



Rope hand hold at bottom of bedroom stairs



Stairgate in place



View from sitting room without stairgate in place

Second Floor:

- Opening the door from the sitting room to the second stairs requires concentration as the small landing area is only 340mm wide and it would be easy to lose footing and slip down the stairs.

- Door to stairs is 460mm wide. Before opening this door, the low, wood stair gate at the top of the first flight of stairs should be closed behind you.
- Stairs to second floor are 430mm at the narrowest point.
- There are no handrails but the door architrave on the right-hand side is used to hold onto. The bedroom is open plan from the stairs and wooden posts at the top of the stairs are used to hold onto when climbing the last few steps. One grab rope.
- There are a total of 8 steps to the bedroom.
- Floor covering is carpet.

Kitchen

- Front door opens into kitchen.
- The light switch is to the right of the front door at a height of 1380mm.
- Height of floor to ceiling beam 1830mm.
- Height of worktop is 920mm from floor level.
- Stainless steel sink with mixer twist taps.
- Slot-in electric cooker with grill and 2 ring ceramic hob.
- Microwave, cordless kettle, toaster.
- The lighting is 6 spotlights on a track.
- Small eating shelf with two stools. This shelf has knee clearance height of 740mm, and stool is 520mm high.
- There is a plinth heater
- There are two windows looking onto the terrace
- There are coat hooks on the back of the entrance door



The picture shows one of the stools



Door to bathroom from the kitchen

Ground floor bathroom

- Directly off kitchen.
- This door has a maximum opening width of 480mm, a height of 1650mm and a threshold of 20mm.
- Light pull to the left of the door at a height of 1250mm.
- WC has a lever flush and a seat height of 450mm.
- The roll top bath has a height of 650-750mm and a maximum length inside of 1000mm.
- The bath has twist mixer taps with handheld shower attachment.
- There are no grab rails.
- Sloping ceiling with a low beam above the bath. Height of ceiling at the opposite end to the taps is 1320mm. Height of low beam is 1550mm.
- Hand basin has twist taps and a height of 850mm.
- Heated towel rail
- A mirror and a shaver light are above the hand basin.
- Wall mounted shaver socket.
- The lighting is one sealed ceiling light.



Sitting Room

- Directly off stairs.
- The light switches are above the eco-radiator at a height of 1200mm.
- Height of floor to ceiling beam 1780mm.
- Heating is by an eco-radiator and a wood burning stove.
- Two-seater sofa with a seat height of 450mm, a back height of 400mm and a width of 1570mm.
- Small circular dining table knee clearance of 650mm and two wood chairs without arms one with a seat height of 380mm and the other a seat height of 430mm.
- Two small drink stools.

- 24"TV with integrated DVD player. To switch on the TV/DVD, it is necessary to stretch behind the oak coffer to the sockets.
- Robert's radio.
- Sash window with views over the rooftops and down to the harbour.
- Lighting comprises two single wall lights and a table lamp.



Double Bedroom

- The bedroom is immediately off the stairs.
- Rope hand hold at bottom of bedroom stairs above the entrance to sitting room.
- Wall light on stairs to bedroom. The light switches are just inside the bedroom on the left-hand side at a height of 1250mm.
- Heating is by an eco-radiator.
- Double bed on an iron base. Firm mattress.
- Double bed 5'1500mm bed x 6'6"/1975mm long x 2'2"/650mm high.
- Small chair with rush seat at a height of 430mm and a back height of 450mm.
- Low level window with views over rooftops to harbour and a smaller window to the side of the bedroom.
- Four drawer chest of drawers with small mirror on the wall above the chest.
- Hanging clothes rail, hooks at a height of 1420mm.

National Trust

- Lighting consists of two single wall lights and a table lamp on the chest of drawers.
- Bed in centralised position allowing access each side. The access is very limited on both sides of the bed.
- Bed has a clearance from floor level of 330mm.



Bed faces the small window overlooking roof tops



Stairs from bedroom to sitting room



View from bedroom towards the stairs

Terrace

- The terrace is enclosed and is on several levels. A low metal fence separates it from the terrace of the neighbouring property.
- The terrace is accessed from the ground floor bathroom through a door with a very low head height of 1350mm.
- On the upper level there is a garden table (760mm high x 830mm diameter) and two chairs with arms. The chairs have a seat height of 470mm and a back height of 500mm.
- There is a slight drop down along the back edge of the upper terrace as it borders the neighbouring property.
- There is a padlocked caretaker shed behind the seating area on the upper terrace.
- There is a log box on the lower area of the terrace.



Terrace seating area



Looking down from the seating area



Steps from bathroom door

Additional Information

- Assistance dogs are welcome at all our cottages
- In the event of a fire, it is the responsibility of the guests to evacuate themselves. Vibrating fire/smoke detectors are available if requested at time of booking. Please contact us if you have any other specific access requirements in this respect.
- Mobile signal varies in Port Isaac and may not be available. Please check with your mobile provider.
- Carpets are 80/20 wool/manufactured fibres.
- Duvets and pillows are made of hollowfibre.
- Cushions are hollowfibre.

Facilities at all cottages

In addition to the standard equipment and facilities, each cottage is equipped with the following:

- Good reading light.
- Non-slip mat for bath/shower.
- Information in alternative formats (on request).

We aim to provide these items in all cottages but please check when booking as to their availability and to check if new items have been added to the list.

In The Birdcage, please pre-request a large handle vegetable peeler and an easy jar opener.

Specialist equipment

Other specialist equipment such as wheelchairs, bath seats, toilet frames etc may be available for loan or purchase from the local Red Cross loan centre. Please check this out before booking the Cottage and contact us if you require further information.

<https://www.redcross.org.uk/get-help/borrow-a-wheelchair>

<https://www.redcross.org.uk/get-help/hire-a-toilet-aid>

Future Plans to improve Access to National Trust Holiday Cottages

- We are currently in the process of writing accessibility guides for all our holiday cottages and improving access over time for all our guests. All feedback is very helpful in informing us of ways in which we can improve access to all our cottages. We welcome any comments or ideas from you about access at this cottage and thank you for taking the time to do this. Please do this in the most convenient way for you. See contact details below or information on website.

About the Accessibility Guide

- This Accessibility Guide is intended to provide key information about the cottage that may be particularly relevant to guests with disabilities. Please contact us prior to booking if you would like information that is more specific, and we will be happy to oblige.
Email: holiday.enquiries@nationaltrust.org.uk
Phone: 0344 800 2070

Access for All at the National Trust

- The Access for All office works to improve access at all National Trust cottages and properties. The office welcomes comments and ideas on improving access.
Phone: 01793 818531
Email: accessforall@nationaltrust.org.uk

October 2022