

National Trust Cottages Accessibility Guide



The Bothy
Ref No 008014

Introduction

- Located within the gardens of Powis Castle.
- Parking for two vehicles at the front of the cottage.
- The cottage is a self-catering, accommodating up to six people. The property has two floors. On the first floor there are three bedrooms, one double bedroom with a dressing room leading off it through to the en-suite, and two twin bedrooms.
- It has a wood-burning stove.
- It has no private garden but a small patio area within the main gardens where you can enjoy glorious views. Guests have access into the castle gardens during their stay.
- The staircase in this cottage is steep.
- Guests need to arrive before 7pm, which is the electronic security gate deadline for entry into the Powis Castle Estate. After this time, the main gates are locked, and entry is not possible. An electronic key fob for the gates will be left for guests in the key safe to be used for the duration of the stay.

The cottage is arranged as follows:

Ground Floor:

- Hall, shower room with separate lavatory, boot room, sitting/ dining room, kitchen with dining table, utility room.

First Floor:

- Three bedrooms: Master bedroom provides a five-foot double bed with walk-through dressing room, connected en-suite shower room and lavatory, plus two twin bedrooms. The bathroom has a traditional roll-top bath.

Pre-Arrival

- See the main webpage for booking and location details.
- Please contact us prior to booking with any specific access requirements.

- Directions are provided with booking

Approach

- The cottage is set within the castle grounds. The approach to the cottage is through the grounds of the castle itself. Guests will need to follow the instructions sent with the booking information with care.

Arrival & Parking Facilities

- Guests can load and unload their vehicle outside the cottage where there is a parking area.
- The key safe is in a black box situated at the front door on the right-hand side. It is operated by a push button mechanism. A torch is recommended especially if arriving in the dark as the numbers on the box can be difficult to see. The key is to be returned to the key safe on departure.

Getting in (and out) of the cottage

- There are two steps into the cottage.
- These are 130mm, 150mm respectively.



- The door has a clear opening width of 1040mm.



- Through the front door there are a further two steps up into the corridor.
- These are 210mm and 220mm respectively.
- There is a handrail to the right at a height of 1000mm.



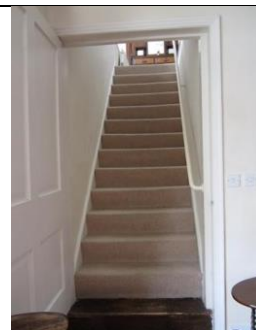
Getting around the cottage

Ground floor:

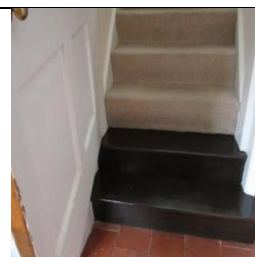
- There are a further two steps into the kitchen.
- Internal door width to the lounge is 990mm.
- To the kitchen is 790mm and the stairs door is 1070mm.
- All floors on the ground floor including the kitchen are quarry tiled and the sitting room rug has a non-slip backing.



- The staircase is steep (930mm wide) with each step being 200mm high and a handrail on the right-hand side at 810mm.



- The first two steps are wooden, and the rest are carpeted.



First floor:

- The hallway is carpeted. The bedrooms have wooden floors and include area rugs with non-slip backing.



Kitchen

- Situated directly off the sitting room.
- There are two steps up into the kitchen. 120mm and 90mm respectively
- The worktops are at a height of 930mm.
- Electric cooker with ceramic hob
- Dishwasher, fridge/freezer, washer/dryer, microwave, kettle and toaster



Dining table in kitchen

- Wooden table and chairs
- Height of table is 780mm with maximum clearance underneath of 720mm.
- Wooden dining chairs have seat height of 450mm.



Breakfast bar

- Breakfast bar at window with a height of 900mm.
- Wooden stools with a height of 780mm.
- Good natural light from the window.



Ground floor Bathroom

- WC with a height of 420mm.



- Corner basin with a height of 820mm.



Ground floor shower room

- Quarry tiled floor.
- Electric shower with step into at a height of 280mm.



Sitting Room

- There is 4-seater sofa at a height of 470mm.



- There are two armchairs at a height of 480mm.



- There is a red armchair at a height of 350mm.



Dining Area

- There is a dining table with six chairs, two have arms.
- The dining table is 760mm high with a clear height underneath of 740mm.



- Each chair has a seat height of 460mm.
- The two carver chairs are the same.



First Floor: Bathroom and WC

- Roll top bath with mixer tap shower attachment.
- Bath is 530 high x 1700mm x 680mm wide.
- 1470mm between edge of basin and bath



- Basin is 850mm high.



- WC is 440mm high.



- Chair has a seat height of 440mm.



Twin Bedroom 1

- Beds are 3'6" wide and 6'2" long.
- Antique iron beds 680mm high.
- Clear space under bed is 350mm.
- Bedside table and light between the beds.



- Chair has seat height of 430mm.



Twin Bedroom 2

- Beds are 3'6" wide and 6'2" long.
- Antique brass and iron beds. 680mm high.
- Clear space under bed is 350mm.
- Bedside table and light at each bed.
- This room has a large space between the beds and two entry doors.



Double Bedroom

- Antique brass and iron double bed is 4'6 x 6'2 - 700mm high.
- Bedside lights in addition to ceiling light.
- Good natural lighting
- Walk through single bedroom to en-suite shower room.
- Chair has a seat height of 430mm.



Dressing room

- Two chairs with a seat height of 400mm.



Additional Information

- Assistance dogs are welcome at all our cottages.
- In the event of a fire, it is the responsibility of the guests to evacuate the building themselves. Vibrating fire/smoke detectors are available if requested at time of booking. Please contact us if you have any other specific access requirements in this respect.

Facilities at all cottages

The National Trust aims to expand the list of accessible /equipment/items available at each cottage and these may include:

- Cordless kettle
- Hollowfibre bedding
- Chair with armrests
- Good reading light
- Large handle vegetable peeler
- Easy tin opener
- Non-slip mat for bath/shower
- Non-slip place mat
- Easy jar opener
- Information in alternative formats (on request)

Please note that we cannot guarantee that all items will be available at the time of your visit. Please enquire at the time of booking regarding any particular requests.

Specialist equipment

Other specialist equipment such as wheelchairs, bath seats, toilet frames etc may be available for loan or purchase from the local Red Cross loan centre. Please check this out before booking the Cottage and contact us if you require further information.

<http://www.redcross.org.uk>

Future plans to improve Access to National Trust Holiday Cottages

- We are currently in the process of writing accessibility guides for all our holiday cottages and improving access over time for all our guests. All feedback is very helpful in informing us of ways in



which we can improve access to all our cottages. We welcome any comments or ideas from guests about access at this cottage and appreciate this input. We encourage guests to provide their feedback in the most convenient way, see contact details below or information on website.

About the Accessibility Guide

- This Accessibility Guide is intended to provide key information about the cottage that may be particularly relevant to guests with disabilities. Guests should contact us prior to booking if more specific information is required.

Email: cottages@nationaltrust.org.uk

Phone: 0844 8002070

Access for All at the National Trust

- The Access for All office works to improve access at all National Trust cottages and properties. The office welcomes comments and ideas on improving access.

Phone: 01793 818531

Email: accessforall@nationaltrust.org.uk

Date: March 2023