

National Trust Cottages Accessibility Guide

The Chauffeur's Flat
Coleton Fishacre
Devon



Property Ref: 012016

Introduction

The property is located on the Coleton Fishacre Estate, adjacent to the visitor entrance to the gardens and National Trust car park. It is the top floor flat and has its own private entrance and staircase. Allocated covered parking is directly next to the property entrance.

Sleeps up to 2 people in 1 bedroom, bathroom with shower over the bath, and a separate toilet. Once in the flat, it is all on one level with good circulation. The doors are 1920's style doors with higher door knobs located at a height of 1330mm.

The property has modern night storage heating with an electric "wood-burner" effect fire.

The Cottage is arranged as follows:

First floor:

Kitchen, sitting/dining room, bedroom (double with 6' bed which can also be a twin on request), bathroom with shower over bath, separate toilet.

Pre-Arrival

- See the main webpage for booking and location details.
- Please contact us prior to booking if you have any specific access requirements.
- Directions provided with booking

Approach

The property is approached via well maintained country lanes, single width in places and with passing places. Entering onto the Coleton Fishacre Estate the lane slopes downwards and is two-way. The property is found on the left before the entrance to the visitors' car park.

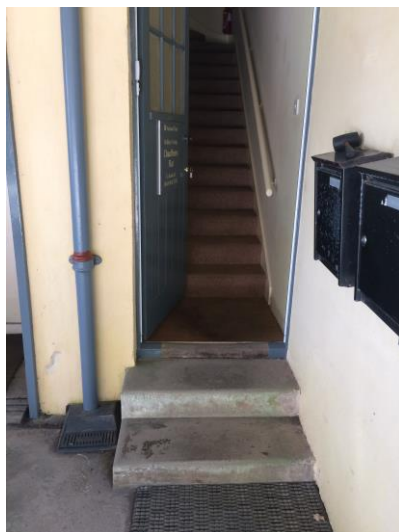
Arrival & Parking Facilities

- Allocated covered parking is available underneath the flat and next to its entrance
- There is outside lighting by the front door but if arriving after dark it is advisable to have a torch



Getting in (and out) of the cottage

- Combination key box to the left , height 1300mm
- Two concrete steps up to the front door, first step height 120mm, second step 150mm, tread 220mm
- Front door width 800mm, raised wooden threshold width 90mm, height 70mm, step down 40mm
- Hallway width 940mm by 850mm, mat
- Pendant light



Getting around the cottage

Stairs: Mainly straight, even carpeted stairs, with quarter turn angular winders at the top. Stair height 170mm, tread 280mm, width 900mm. Stairs lead onto an initial landing area, width 900mm, length 1500mm

First floor:

There is a door from the initial landing area to the main landing, width 750mm. Once within the flat it is all on one level and has good circulation. All rooms are located off the carpeted central landing, width 900mm, pendant light. There are coat hooks at the entrance to the landing located at a height of 1730mm. There are sloping ceilings within some of the rooms but they are not restrictive.



Toilet

- Door width 720mm, level threshold
- Linoleum floor
- Toilet, seat height 430mm, lever handle on the left
- Skylight and a pendant light
- Room width 900mm, circulation from toilet to the end wall 730mm
- No sink



Sitting/dining room

- Door width 730mm, no threshold,
- Continuation of landing carpet
- Electric “wood burner” style fire
- 1 x 2 seater settee, seat height 410mm
- 1 x armchair, seat height 490mm
- Window with views over the landscaped car park and fields beyond
- Ceiling pendant light, 2 x table lamps with on/off switches under the lampshade
- Table height 720mm, clearance underneath 600mm
- 2 x wooden dining chairs seat height 460mm
- Unrestrictive sloping ceilings to the sides of the room



Kitchen

- Door width 730mm, level threshold
- Linoleum floor
- Height of worktop 910mm
- Fitted kitchen with electric double oven and ceramic hob, under counter fridge with freezer box, slim-line dishwasher, microwave with dial
- Sink, mixer lever taps with ceramic washers
- Ceiling pendant light
- Windows with views over the lane to hedgerow and trees
- Sloping ceiling on one side of the room by the window
- Good circulation within the kitchen after initial entrance width between worktops of 770mm



Bathroom

- Door width 740mm, level threshold
- Linoleum floor
- Sink and bath with electric shower over the bath
- Bath height 510mm, taps with ceramic washers, bath grab handles
- Electric shower over bath, height to controls 1500mm
- Initial section of fixed shower screen width 350mm and shower curtain
- Sink height 800mm with twist taps with washers
- Shaver socket height 1750mm
- Ceiling light and skylight
- Circulation between bath and sink 820mm, unrestrictive sloping ceiling to the side
- Wooden chair, seat height 330mm



Double Bedroom

- Door width 730mm, level threshold
- Flooring is a continuation of the landing carpet
- Zip & link double bed, width 1800mm, length 1900mm, height 620mm
- 2 x side tables, bedside lamps with under lampshade on/off switch, pendant light
- Window with views over the lane, hedgerows and trees beyond
- 2 x chairs, one with arms, seat height 350mm
- Wardrobe, chest of drawers
- Good circulation 1000mm clearance each side of the bed and 1200mm at the end
- Reduced ceiling height as there is a sloping ceiling on one side of the room when it's used as a twin



Garden

- There is no private garden but access to the estate gardens

Additional Information

- Assistance dogs are welcome at all our cottages
- In the event of a fire, it is the responsibility of the guests to evacuate themselves. Vibrating fire/smoke detectors are available if requested at time of booking. Please contact us if you have any other specific access requirements in this respect.

Facilities at all cottages

The National Trust aims to expand the list of accessible /equipment/items available at each cottage and these may include

- Cordless kettle
- Hollowfibre bedding
- Chair with armrests
- Good reading light
- Large handle vegetable peeler
- Easy tin opener
- Non-slip mat for bath/shower
- Non-slip place mat
- Easy jar opener
- Information in alternative formats (on request)

Please note that we cannot guarantee that all items will be available at the time of your visit. Please enquire at the time of booking regarding any particular requests.

Specialist equipment

Other specialist equipment such as wheelchairs, bath seats, toilet frames etc may be available for loan or purchase from the local Red Cross loan centre. Please check this out before booking the Cottage and contact us if you require further information.

<http://www.redcross.org.uk/standard.asp?id=89425>

Future Plans to improve Accessibility to National Trust Holiday Cottages

We are currently in the process of writing accessibility guides for all our holiday cottages and improving access over time for all our guests. All feedback is very helpful in informing us of ways in which we can improve access to all our cottages. We welcome any comments or ideas from you about access at this cottage and thank you for taking the time to do this. Please do this in the most convenient way for you. See contact details below or information on website.



About the Accessibility Guide

This Accessibility Guide is intended to provide key information about the cottage that may be particularly relevant to guests with disabilities. It is reviewed annually. Please contact us prior to booking if you would like more detailed information and we will be happy to oblige.

Phone: 0344 800 2070

Email: cottages@nationaltrust.org.uk

Access for All at the National Trust

We continue to work to improve accessibility at all our holiday cottages. We welcome comments and ideas on improving access.

Phone: 0344 800 2070

Email: cottages@nationaltrust.org.uk

Date: 21 June 2018