

# National Trust

## National Trust Cottages Accessibility Guide

**Cottage name:** The Squires Retreat

**Address:** Felbrigg Hall, Cromer Road, Felbrigg Norfolk NR11 8PR

**Ref:** 011020

### Introduction



Experience the elegance of life at the heart of the grand Felbrigg estate in this spacious four bedroom property. The Retreat was created from a conversion of the former laundry wing for the last of the Felbrigg Squires when the austerity of winters in the Hall became too much. The interiors are in keeping with its 17<sup>th</sup> century elegance and the four poster beds add a little luxury to your stay. Step through its French doors directly out to a private garden. Alternatively, enjoy the rest of the grounds including the West Garden, next to the cottage, with its ornate brick summer house.

### Pre-Arrival

- See the main webpage for booking and location details
- Please contact the Contact Centre On 0844 800 2070 prior to booking if you have any queries or specific access requirements
- Directions are provided with booking

### Approach

- Enter the Felbrigg Hall estate through the main gates. Follow the drive to the main car park. Carry on through the car park and take the drive to the right leading to the back of

the Hall. You will see signs for The Retreat on the left beyond the second wrought iron staircase.

## Arrival & Parking Facilities

- There are two allocated parking spaces for The Retreat as signposted.

## Getting in (and out) of the cottage





- There is a sloped walkway leading under an archway to the right of the parking area
- Once through the archway you will enter a large grassed courtyard
- Immediately turn right and cross the grass to the far corner and you will find The Retreat
- There is a paved area to the front of the property leading up to 2 steps
- Step 1 is 100mm height, 320mm depth
- Step 2 is 100mm height, 900mm depth
- Wooden threshold step into hallway 90mm height, 700 into hall
- Doorway 800mm width

## Getting around the cottage

- There is very good circulation throughout the property



## Ground Floor

- Very spacious hallway with parquet flooring and rugs
- Chest of drawers/ piano/ occasional table/ Bookcase
- 2 Easy chairs 440mm seat height with side table
- Pendant lighting and table lamp
- Door to store cupboard

From the hallway there are doors to Sitting Room/ Laundry room/ Dining Room / Kitchen



## Sitting Room

- Door to sitting room 800mm width with wooden threshold 10mm height, 120mm depth
- 2 large 3 seater sofas 520mm seat height
- 2 occasional chairs 520mm seat height
- Footstool 320mm height
- TV cupboard with flat screen tv and remote
- Side table 670mm height
- Side table to side of fireplace 670mm height
- Circular table 670mm height
- 3 tiered table with visitor info
- Fireplace with fire surround and electric fire
- Carpet to floor with large rug
- Centre light and further standard lamp
- Telephone on window cill
- Two large windows overlooking courtyard



## Diner

- Door to dining room 800mm width
- Wooden threshold to doorway 10mm height, 120mm width
- Wood flooring
- Large mahogany dining table seating 8 people 730mm height
- 840mm space from table to radiator
- 8 chairs 460mm seat height
- 1 carving chair 460mm seat height
- Mahogany dresser 960mm height
- Corner table with hifi unit
- Highchair
- Doors leading out to the garden
- Centre light with additional wall lights



## Large opening into kitchen from dining room

- Wooden flooring no threshold
- Range of floor cupboards 910 height to counter top
- Range of eyelevel units 1320 height
- Fridge freezer/ Dishwasher/ Microwave/ Toaster/ Cordless Kettle
- Rangemaster electric range cooker
- Butlers sink 820mm height
- Mixer taps
- Inset spotlights to ceiling



## Laundry/utility room

- Doorway from hall 720mm width
- Wooden threshold 10mm height, 120mm depth
- Vinyl flooring
- Coat stand
- Shoe stand

### Further doorway into rear of utility room

- Doorway 720mm width – no threshold
- Vinyl flooring
- Washing machine/ Tumble drier
- Low level wc 460mm to seat
- Wash basin with turn handles 780mm height



### From Hallway door to storage room

- Doorway to storage cupboard 800mm width

### From hallway stairs leading to first floor

- 180mm height, 250mm depth each stair
- 9 stairs to 1<sup>st</sup> landing area – 1080mm x 1040mm
- Handrail 800mm height to left balustrade to right
- Turn right 5 further stairs to 2<sup>nd</sup> landing area 1060mm x 1060mm
- 3 further steps to main landing/hallway
- Carpet to stairs and hallway/landing





## Bedroom one (Green bedroom)

- Doorway 740mm width
- Wooden threshold 10mm height, 120mm depth
- Wooden flooring with 3 rugs
- Wooden framed four poster bed 1900mm width, 2220mm length, 700mm height
- Footstool 340mm height
- 2 occasional 1250mm chairs 400mm seat height
- 2 bedside cabinets with lamps 880mm height
- Chest of drawers 1040mm height with mirror



Doorway leading through to ensuite/dressing area - 740mm

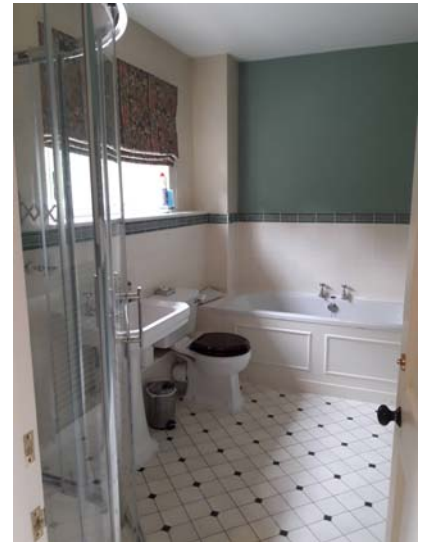
- Brass tread to threshold
- Dressing area with vinyl flooring
- Granite top washstand 760mm height
- Wooden towel stand

Doorway to ensuite - 720mm

- Vinyl flooring – no threshold
- Corner shower with opening max 510mm width
- Step into shower external 190mm height
- Step into shower internal 80mm height
- 1250mm height to shower control
- 1460mm min. height of shower
- Wash basin 850mm height
- Turn handle taps
- Low level wc 440mm height to seat

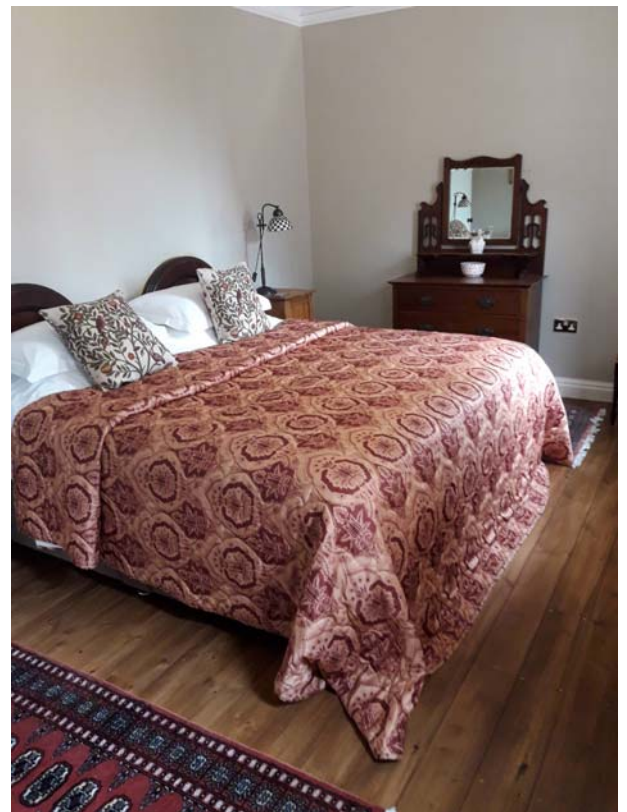


- Bath with centre turn handle taps
- External height of bath 580mm
- Internal depth of bath 440mm height
- Internal length 1440mm
- Heated towel rail



## Bedroom 2

- Doorway 740mm width
- Wooden threshold 10mm height, 120mm depth
- Wooden floor with 2 rugs
- Double bed 1820 width, 1880mm length, 640mm height
- 2 bedside cabinets with lamps 740mm height
- Occasional chair 440mm seat height
- Wardrobe
- Wooden towel stand





## Bedroom 3 (Red room)

- Doorway 740mm width
- Wooden threshold 10mm height, 120mm depth

Leading into dressing area

- Washstand 820mm height
- Stool 450mm height
- Wooden floor
- Door to locked heating cupboard

2 steps leading into bedroom

- Step one 110mm height, 600mm depth
- Step two 100mm height leading into bedroom through door opening of 740mm width



Bedroom area

- Wooden floor with rug
- Wooden four poster bed 1960mm width, 2230mm length, 700mm height to bed
- 2 occasional chairs 360mm seat height
- Double wardrobe
- Chest of drawers with mirror 1100mm height
- Wooden towel stand
- 2 bedside cabinets with lamps 920mm height
- Footstool 270mm height
- 1 centre light
- Double aspect windows



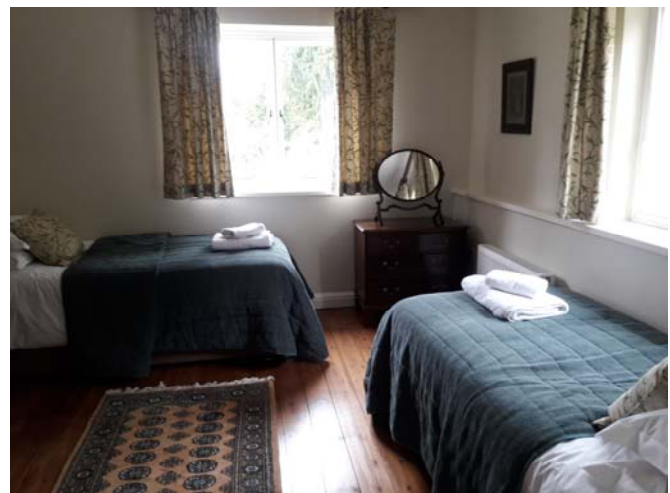
Doorway to ensuite 720mm width



- Vinyl flooring
- Corner shower max opening 510mm width
- External step into shower 200mm height
- Internal step into shower 80mm height
- 1320mm to shower control
- 1500mm min height of shower head
- Low level wc 450 seat height
- Wash basin 850mm height
- Turn handle taps
- Roll top bath
- 660mm height of bath
- 1640mm length of bath
- 460mm depth of bath
- Mixer taps with shower attachment to centre of bath
- Heated towel rail
- Glass shelf 900mm height

## Bedroom 4 (twin bedroom)

- Doorway 740mm width
- Wooden threshold 10mm height, 120mm depth
- Wooden floor with rug
- Wardrobe
- Chest of drawers with mirror 750mm height
- Bedside cabinet 780mm height
- 2 single divan beds 1900mm length, 900mm width, 620 height to mattress



Doorway to ensuite 740mm width

- Wooden threshold 10mm height, 120mm depth
- Heated towel rail
- Wash basin 820mm height with turn handle taps
- Low level wc 640mm to seat
- Corner shower
- Max door opening 500mm width
- External step into shower 180mm height
- Internal step into shower 80mm height
- 1150mm height to shower control
- 1450mm min height of shower head
- Vinyl flooring
- Centre light and light over basin with shaver socket



## Bathroom

- Doorway from landing/hallway 740mm width
- Vinyl floor
- Corner shower max opening 530mm width
- External step into shower 200mm height
- Internal step into shower 80mm height
- 1640mm to shower control
- 1460 min height of shower head
- Low level wc 460mm seat height
- Wash basin 820mm height with turn handles
- Heated towel rail



## Garden



- Secluded garden and seating outside the cottage leading from the dining room
- Guests can also enjoy access to the rest of the estate when day time visitors have gone
- Access to the West garden and visitor route is beside the cottage garden

## Additional Information

### Facilities at all cottages

The National Trust aims to expand the list of accessible /equipment/items available at each cottage and these may include

- Cordless kettle
- Hollowfibre bedding
- Chair with armrests
- Good reading light
- Large handle vegetable peeler
- Easy tin opener
- Non-slip mat for bath/shower
- Non-slip place mat
- Easy jar opener
- Information in alternative formats (on request)

Please note that we cannot guarantee that all items will be available at the time of your visit. Please enquire at the time of booking regarding any particular requests.

## Specialist equipment

Other specialist equipment such as wheelchairs, bath seats, toilet frames etc may be available for loan or purchase from the local Red Cross loan centre. Please check this out before booking the Cottage and contact us if you require further information.

<http://www.redcross.org.uk/standard.asp?id=89425>

## Future Plans to improve Access to National Trust Holiday Accommodation

- We are currently in the process of writing accessibility guides for all our holiday cottages and bunkhouses and improving access over time for all our guests. All feedback is very helpful in informing us of ways in which we can improve access. We welcome any comments or ideas from you about access at this cottage and thank you for taking the time to do this. Please do this in the most convenient way for you. See contact details below or information on website.

## About the Accessibility Guide

- This Accessibility Guide is intended to provide key information about the accommodation that may be particularly relevant to guests with disabilities. Please contact us prior to booking if you would like information that is more specific and we will be happy to oblige.  
Email: [cottages@nationaltrust.org.uk](mailto:cottages@nationaltrust.org.uk)  
Phone: 0344 8002070

## Access for All at the National Trust

- The Access for All office works to improve access at all National Trust accommodation and properties. The office welcomes comments and ideas on improving access.  
Phone: 01793 818531  
Email: [accessforall@nationaltrust.org.uk](mailto:accessforall@nationaltrust.org.uk)

Date September 2019