



The Victorian Laundry (020001)
November 2022
Beningbrough, York, North
Yorkshire, YO30 1DD

Introduction

- First floor cottage in the grounds of Beningbrough hall.
- The Cottage has its own front door and is accessible from the Victorian Laundry garage via the grounds of Beningbrough hall.
- It comprises of seven rooms on the first floor of the building.

The Cottage is arranged as follows:

Ground Floor:

- Access to the cottage through the old laundry room exhibition.

First Floor:

- Sitting/ dining room, kitchen, bathroom, cloakroom, washing machine room, twin bedroom and double bedroom.

Pre-Arrival

- See the main webpage for booking and location details.
- Please contact us prior to booking if you have any specific access requirements.
- Directions provided with booking.

Approach

- To cottage from garage via Beningbrough hall grounds is approximately 85 metres in total.

Arrival & Parking Facilities

- Entrance through the garage, next to the entrance gate, via a door inside.
- Door (700mm wide) at the rear of garage leads to a small, enclosed area with a flag stone path. This is affectionately known on site as 'The Secret Garden.' The luggage trolley is under the sloping roof. A gate (990mm wide) leads into the grounds. This is followed by a gravel path that leads into a cobbled courtyard with a flagstone path.



Getting in (and out) of the cottage

- The entrance has a stone step 50 mm high. The front door has a clear opening of 980mm.



Getting around the cottage

Ground floor:

- Cottage door 770mm wide.
- Flag stone lobby.
- 11 steps at 190mm banister to right hand side.



First floor:

- Door mid landing 700mm wide.
- 14 steps at 190mm. Banister to right hand side until halfway up the stairs.

Please note, although families are welcome at cottages, stairgates are not provided.

- The floors are even, carpeted with vinyl flooring in the bathroom, cloakroom, washing machine room and kitchen.
- Kitchen door 690mm wide.
- Hallway door 685 mm wide.
- Bathroom door 700mm wide.
- Cloakroom door 550mm wide.
- Washing machine room door 690mm wide.
- Twin bedroom door 670mm wide.
- Double bedroom door 680mm wide.

Kitchen



- Height of worktop is 905mm
- Electric hob and cooker, microwave, fridge freezer, toaster and dishwasher.

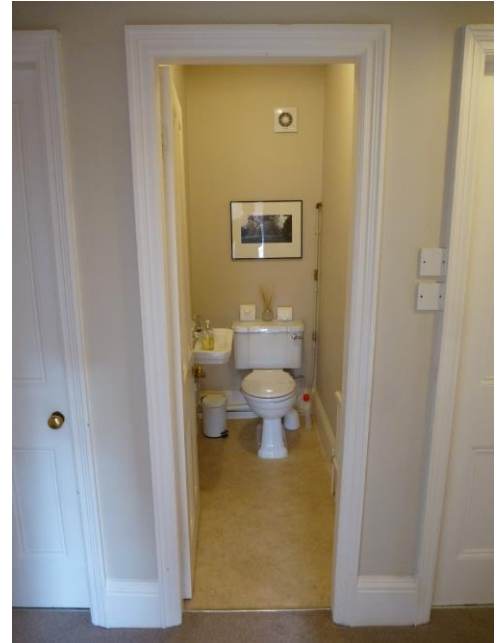
Bathroom

- Basin, bath without hand grip and shower cubical without hand grip.
- Bath is 470mm high, 1490mm length, 580 mm width. Beaumont taps.
- Basin is 820mm high, with Beaumont taps.
- Shower is 265mm high, 760 by 760 mm wide. Shower door 645mm wide.



Cloakroom

- The WC is 440 mm high.
- Basin 845mm high, with Beaumont taps.



Sitting Room

- Sofa chairs 440mm and 460 mm high.
- TV & DVD equipment.
- 2 lamps.
- Three coffee tables.



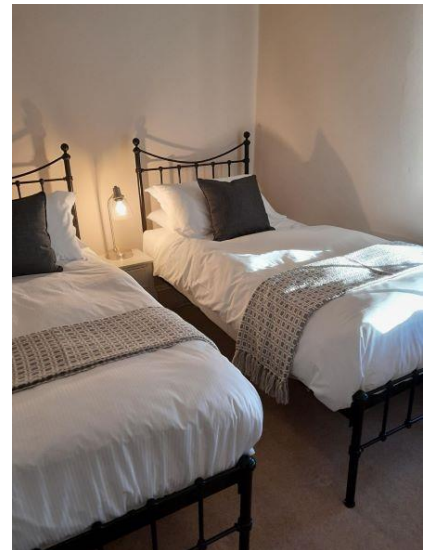
Dining Room

- Dining table 765 mm high.
- Four dining chairs 460 mm high.



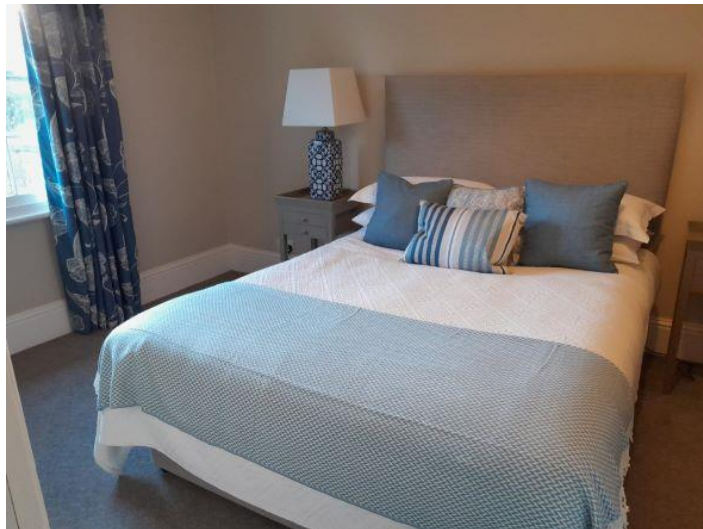
Twin Bedroom

- Single bed 930 mm wide, 1950 mm length, 730mm from floor to mattress height.
- Single bed 930 mm wide, 1950 mm length, 730mm from floor to mattress height.
- One lamp.
- One bedside table.



Double Bedroom

- Double bed 1520 mm wide, 2000 mm length, 560 mm height, 350 mm space between floor and mattress.



Additional Information

- Assistance dogs are welcome at all our cottages
- In the event of a fire, it is the responsibility of the guests to evacuate themselves. Vibrating fire/smoke detectors are available if requested at time of booking. Please contact us if you have any other specific access requirements in this respect.

Facilities at all cottages

The National Trust aims to expand the list of accessible /equipment/items available at each cottage and these may include

- Cordless kettle
- Hollowfibre bedding
- Chair with armrests
- Good reading light
- Large handle vegetable peeler
- Easy tin opener
- Non-slip mat for bath/shower
- Non-slip place mat
- Easy jar opener
- Information in alternative formats (on request)

Please note that we cannot guarantee that all items will be available at the time of your visit. Please enquire at the time of booking regarding any particular requests.

Specialist equipment

If you are hiring or bringing your own equipment be aware that it may be helpful to let us know so that we can check in more detail whether it will fit into the cottage.

Future Plans to improve Access to NT Holiday Cottages

- We are currently in the process of writing Accessibility Guides for all our holiday cottages and improving access over time for all our guests. All feedback is very helpful in informing us of ways in



which we can improve access to all our cottages. We welcome any comments or ideas from you about access at this cottage and thank you for taking the time to do this. Please do this in the most convenient way for you. See contact details below or information on website.

About the Accessibility Guide

- This Accessibility Guide is intended to provide key information about the cottage that may be particularly relevant to disabled guests. Please contact us prior to booking if you would like information that is more specific and we will be happy to oblige.

Email: holiday.enquiries@nationaltrust.org.uk

Phone: 0344 8002070

The National Trust

- The National Trust works to improve access at all our accommodation and properties. The office welcomes comments and ideas on improving access.

Phone: 01793 818531

Email: accessforall@nationaltrust.org.uk

Date Reviewed 9th November 22