

National Trust Cottages Accessibility Guide

The West Wing,

Trerice,
Kestle Mill,
Newquay,
Cornwall
TR8 4PG

Ref: 011090



Introduction

The West Wing is a first-floor apartment situated in the west wing of the historic house, Trerice. Although at the heart of the estate, it is a private retreat, especially after 5:30pm when the public visitors to Trerice have departed. It has views over the garden and rural countryside.

The Cottage is arranged as follows:

Ground floor

Hall and stairway to first floor.

First floor

Open-planned kitchen/lounge/dining room. Double bedroom with ensuite bathroom.

Pre-Arrival

See the main webpage for booking and location details.

Please contact us prior to booking if you have any specific access requirements.

Directions provided with booking

Approach

Trerice House, being open to the public, is very well signposted with the usual Brown Tourist road signs. The immediate approach roads are narrow country lanes.

Arrival & Parking Facilities

- If your arrival time is during public opening hours, proceed to the public car park and report to the attendant on duty and they will advise you where to go. If your arrival is outside public opening hours, follow the sign to the Delivery entrance, on the right as you approach the estate.
- The keys are in a key safe on the back of the sign saying "Trerice" – "Speed Limit 5mph". One key is for the padlock on the entrance gate and the other for the cottage front door.



- Return the keys to the safe on final departure.
- It is recommended to bring a torch to set the correct lock combination.
- The car parking area for the cottage is at the rear in the "Property Office" courtyard.

Getting in (and out) of the cottage



There is a private, white wooden gate, 940mm wide, at the cobbled pathway entrance which leads to the front door. There is a 100mm granite step up to the front door which opens outwards. There is an outside lamp by the door.

Getting around the cottage

Ground Floor

Front door opens to small lobby with a stairway up to the first floor.

First Floor

Stairway from lobby to small landing with two doors. One door to double bedroom and other to kitchen. All open inwards.

Entrance Lobby

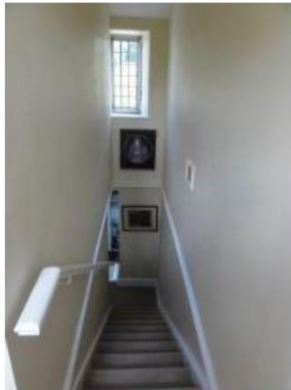
- 900mm wide, glazed, front door into lobby.
- Slate tiled flooring.

- Ceiling light.
- Rointe heater.
- Wall mounted coat rack with 5 hooks.
- Stairway to first floor



Stairway and first floor landing – dual aspect

- Stairway with 3 steps (180mm H x 730mm wide) to dog-leg half landing, a further 11 steps up to first floor landing. Handrail to one side (900mm high).
- Please be aware, there is currently no handrail for the initial 3 steps.
- Fitted carpet flooring.
- Ceiling light on 2-way switch. Emergency lamp.
- Small, lead light, window high above half landing.
- Landing - lead light window, with deep sill, to rear aspect (900mm wide x 900mm high).
- Solid door to bedroom and glazed door to kitchen.



Kitchen/lounge/dining room – open planned

Kitchen area of room – Dual aspect

- 720mm wide doorway, inwards from landing.
- Vinyl flooring.
- Two ceiling lights.
- Lead light window, with deep sill, to front aspect (1,000mm wide x 900mm high).
- Lead light window, with deep sill, to rear aspect (450mm wide x 900mm high).
- Kitchen floor cupboards with drawers under 900mm high worktops.
- Fridge/freezer, washing/dryer machine, dishwasher, microwave oven, toaster and kettle.



- Electric cooker with four rings.

Lounge/dining area of room – dual aspect

- Fitted carpet flooring.
- Two ceiling lights and 2 standard lamps.
- Two Rointe heaters.
- Open fireplace.
- Lead light window, to front aspect, (1,500mm wide x 900mm high) with seat (470mm high) below.
- Lead light window, to rear aspect, (1,500mm wide x 900mm high) with seat (470mm high) below.
- Two-seater settee (440mm seat high).
- Wingback easy chair (470mm seat high).
- Foot stool (750mm wide x 350mm depth x 230mm high).
- Cabinet (1018mm wide x 270mm depth x 1980mm high).
- Round dining table (1,040mm diameter x 660mm knee clearance).
- Two wooden dining chairs with cushion seats (420mm seat height).
- T.V., CD/Radio player and DVD player.
- Side table 59mm high

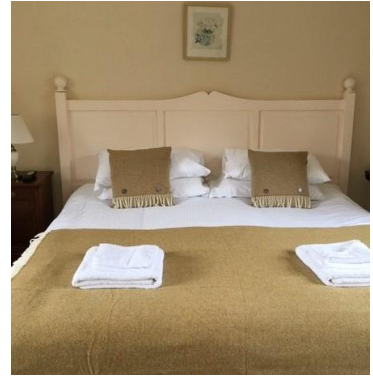
Double bedroom – dual aspect

- 720mm wide doorway inwards from landing.
- Fitted carpet flooring.
- Two ceiling lights. Two table lamps.
- Rointe heaters.
- Lead light window, to front aspect, (1,300mm wide x 900mm high) with seat (470mm high) below.
- Lead light window, with deep sill, to rear aspect (1,400mm wide x 900mm high).
- Built-in wardrobe (1,070mm wide).
- Bow fronted, chest of drawers"2 over 3" (1,040mm wide x 500mm deep x 1,120mm high).
- Bedside cabinet (390mm wide x 390mm deep x 680mm high).
- Wingback easy chair (470mm seat high).
- Octagonal occasional table (650mm diameter x 700mm high).
- Double bed (2,000mm wide x 2,000mm long x 600mm high) – can be made up as twin
- Solid wooden door to ensuite.



Double bedroom ensuite

- 720mm wide doorway.
- Vinyl flooring.
- 3 Spotlights.
- Light/shaver socket above mirror.
- Rointe heater.
- W.C. (420mm seat high).
- Wash basin (810mm high).
- Bath (680mm wide x 1,660mm long x 600mm high).
- Shower cubicle (820mm x 820mm x 620mm cubicle doorway), electric shower and vertical handrail on wall outside.
- Electric towel rail.



Garden

There is no private garden to this cottage but visitors have access to the Terice gardens at all times. For more information on the gardens, please contact the property.

Additional Information

Facilities at all cottages

The National Trust aims to expand the list of accessible /equipment/items available at each cottage and these may include

- Cordless kettle
- Hollowfibre bedding
- Chair with armrests
- Good reading light
- Large handle vegetable peeler
- Easy tin opener
- Non-slip mat for bath/shower
- Non-slip place mat
- Easy jar opener
- Information in alternative formats (on request)

Please note that we cannot guarantee that all items will be available at the time of your visit. Please enquire at the time of booking regarding any particular requests.

Specialist equipment

Other specialist equipment such as wheelchairs, bath seats, toilet frames etc may be available for loan or purchase from the local Red Cross loan centre. Please check this out before booking the Cottage and contact us if you require further information.

<http://www.redcross.org.uk/standard.asp?id=89425>

Future Plans to improve Access to National Trust Holiday Accommodation

- We are currently in the process of writing accessibility guides for all our holiday cottages and bunkhouses and improving access over time for all our guests. All feedback is very helpful in informing us of ways in which we can improve access. We welcome any comments or ideas from you about access at this cottage and thank you for taking the time to do this. Please do this in the most convenient way for you. See contact details below or information on website.

About the Accessibility Guide

- This Accessibility Guide is intended to provide key information about the accommodation that may be particularly relevant to guests with disabilities. Please contact us prior to booking if you would like information that is more specific and we will be happy to oblige.
Email: cottages@nationaltrust.org.uk
Phone: 0344 8002070

Access for All at the National Trust

- The Access for All office works to improve access at all National Trust accommodation and properties. The office welcomes comments and ideas on improving access.
Phone: 01793 818531
Email: accessforall@nationaltrust.org.uk

24th May 2022