

## National Trust Cottages Accessibility Guide

Thorington Lodge, Stoke-by-Nayland, Ref. 010056

### Introduction

- Thorington Lodge is a single storey semi-detached former gate lodge.
- Timber-framed with plastered walls and tiled roof.
- Sleeps three in two bedrooms.
- One bathroom with shower over bath.
- Log burner.
- Small courtyard and private grassed riverside seating area on opposite side of the road.
- There are two steps down into the cottage and one step up from the breakfast area to the kitchen.



*\* Please note that all door widths given indicate the clearance required for access.*

### The Lodge is Arranged as Follows:

- The front door leads straight into a living room off which is the kitchen with breakfast area and an inner corridor giving access to the bathroom, single and double bedrooms and the inner courtyard.

### Pre-Arrival

- See the main webpage for booking and location details.
- Please contact us prior to booking if you have any specific access requirements.
- Directions provided with booking.
- Please bring a torch if arriving in the dark as there are no streetlights here.

### Approach

- The Lodge is located off the main road through the village, but is accessed via a small single track lane.
- White wooden gates are marked 'Thorington Hall & Thorington Lodge' and there is a further wooden gate separating the Lodge (first on left) from the Hall (straight ahead).
- There is a stream on the opposite side of the road.

### Arrival & Parking Facilities

- There is a gravel area in front of the cottage for one car.
- A paved area leads from the gravel car park to the front door step.
- The keysafe is to the right of the front door.



*Thorington Hall from the junction of the main road and the side lane*



*Outer entrance gates to gravel drive*



*Parking area*



*Front door with keysafe to right*



*Steps down to living room*

## Getting In & Out of the Cottage

- The wooden front door is 770mm wide x and 1840mm high. There is a rubber doormat in front of the front door.
- There is a stone step down 150mm, then another 150mm to the pavement floor.
- Door opens directly into living room. There is a doormat directly in front of this door.

## Getting Around the Cottage

### Living Room

- One three-seater fabric sofa height 750mm x seat height 440mm.

# National Trust

- One fabric armchair height 750mm x seat height 440mm.
- Log burner in fireplace with hearth 30mm up. Fireplace opening 177mm wide x 135mm high.
- Two wooden side tables 740mm high and 450mm high.
- Cabinet 960mm high, containing television & DVD player on shelf 430mm high.
- Drop-leaf wooden dining table 700mm high with table lamp.
- One wooden chair 850mm high x seat height 450mm and one upholstered wooden chair 910mm high x seat height 410mm.
- Shelf 133mm high bearing books.
- Double height ceiling with beams.
- Two pendant lights on ceiling, one table lamp and one floor lamp.
- CO detector (above fireplace), smoke detector (on ceiling), fire extinguisher (by front door) and fire break panel (by front door).
- Two windows facing West (one at high level) over parking area/front courtyard, one window facing North towards the outbuildings across the drive and one window facing South to the inner courtyard. This window sill has a telephone on in addition.
- Pamment floor plus one large rug in front of fireplace.



*Living area with inner corridor ahead and kitchen door to right*



*Living room*



*Kitchen with breakfast area to left*

## Kitchen

- Door 740mm wide x 1840mm high with a wooden threshold 10mm down to pamment flooring.
- Step up from breakfast to kitchen area 90mm high.
- Pamment floor in breakfast area and lino flooring in kitchen area.
- Ground level & wall mounted units (the latter 410mm above worktop).
- Worktop height 930mm.
- Breakfast bar 1000mm high from pamment flooring and 920mm from lino flooring.



- Three wicker bar chairs 1.7m high x seat height 730mm.
- Electric oven with hob and cooker hood, microwave, dishwasher, toaster, kettle and fridge/freezer.
- Mixer tap with lever handles.
- Three pendant lights and smoke detector on ceiling.
- Wall mounted fire blanket.
- Windows looking West over parking area/front courtyard and East over inner courtyard.

## Inner Hallway

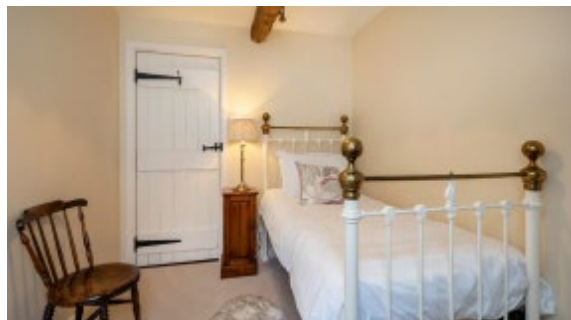
- Door 710mm wide x 1860mm high with a wooden threshold 90mm down.
- Pendant light and smoke detector on ceiling.
- Wall mounted fire break panel and fire panel.
- Beams.
- Wall mounted hooks with hanging height 1580mm.
- Carpeted area and runner.
- Door to inner courtyard covered with curtain.

## Bathroom

- Door 700mm wide x 1940mm high with a wooden threshold 20mm down.
- P-shaped bath 540mm high x 560mm minimum internal width with lever taps & shower attachment over the end of the bath. Curved glass pivot shower screen.
- Small counter top height 830mm.
- In-set basin height 860mm.
- Toilet seat height 430mm.
- Ceiling light and extractor on ceiling.
- Heated towel rail with top bar 1350mm high.
- Airing cupboard on the left with water tank and controls.
- Window facing North across the drive to outbuildings.
- Lino flooring.



*Bathroom*



*Single bedroom*



*King-size bedroom*

## Single Bedroom

- Door 710mm wide x 1940mm high with a wooden threshold 10mm.
- Single metal framed bed 660mm high (excluding headboard).
- One bedside cupboard 710mm high with table lamp.
- Chest of drawers 900mm high with freestanding mirror on top.
- Wooden chair 440mm seat height x 380mm back height.
- Locked trunk 500mm high.
- Pendant light and smoke detector on ceiling.
- Window facing North across the drive to outbuildings.
- Carpeted floor with one sheepskin rug.
- Beams.

## Master Bedroom

- Door 700mm wide x 1940mm high with a wooden threshold 10mm up and down.
- Double metal framed bed 620mm high.
- Two bedside tables, each with one table lamp, 580mm high.
- Chest of drawers 930mm high.
- Wooden chair 440mm seat height x 380mm back height.
- Wardrobe 1880mm high x 910mm wide with hanging height 1750mm and low-level drawer.
- Pendant light and smoke detector on ceiling.
- Window facing East across lane to river and fields.
- Carpeted floor with one sheepskin rug.

## Outside

### Parking Area

- Paved in slightly uneven flagstones leading to a gravelled parking area, bordered by beds containing small shrubs and flowers.
- Two exterior wall lights.
- Key safe to the right of the front door.
- Willow fencing separating the Lodge from the Hall.

## Inner Courtyard

- Door from inner hallway 1000mm wide x 1780mm high with a wooden threshold 30mm down to concrete slope leading to brick courtyard.
- Exterior wall light.
- Wooden round table 760mm high with four folding wooden chairs 960mm high x seat height 430mm.
- Gate to the front lane and door to locked outbuilding.

## Outbuildings

- Left-hand of outbuildings houses the general waste, recycling & glass bins plus the wood store.

## Riverside Seating Area

- Wooden bench seat height 400mm x seat back 410mm.



*Riverside seating area*



*Courtyard*



*Outbuilding for refuse and wood store*

## Additional Information

- Assistance dogs are welcome at all our holiday cottages.
- In the event of a fire, it is the responsibility of the guests to evacuate themselves. Vibrating fire/smoke detectors are available if requested at time of booking. Please contact us if you have any other specific access requirements in this respect.

## Facilities at all Cottages

The National Trust aims to expand the list of accessible/equipment/items available at each cottage and these may include:

- Cordless kettle
- Hollowfibre bedding
- Chair with armrests
- Good reading light
- Large handle vegetable peeler
- Easy tin opener
- Non-slip mat for bath/shower
- Non-slip place mat
- Easy jar opener
- Information in alternative formats (on request)

Please note that we cannot guarantee that all items will be available at the time of your visit. Please enquire at the time of booking regarding any particular requests.

## Specialist Equipment

Other specialist equipment such as wheelchairs, bath seats, toilet frames etc may be available for loan or purchase from the local Red Cross loan centre. Please check this out before booking the cottage and contact us if you require further information.

<http://www.redcross.org.uk/standard.asp?id=89425>

## Future Plans to Improve Access to National Trust Holiday Cottages

We are currently in the process of writing accessibility guides for all our holiday cottages and improving access over time for all our guests. All feedback is very helpful in informing us of ways in which we can improve access to all our cottages. We welcome any comments or ideas from you about access at this cottage and thank you for taking the time to do this. Please do this in the most convenient way for you. See contact details below or information on website.

## About the Accessibility Guide

This Accessibility Guide is intended to provide key information about the cottage that may be particularly relevant to guests with disabilities. It is reviewed annually. Please contact us prior to booking if you would like more detailed information and we will be happy to oblige.

Phone: 0844 800 2070

Email: [cottages@nationaltrust.org.uk](mailto:cottages@nationaltrust.org.uk)

## Access for All at the National Trust

- The Access for All office works to improve access at all National Trust accommodation and properties. The office welcomes comments and ideas on improving access.



Phone: 01793 818531

Email: [accessforall@nationaltrust.org.uk](mailto:accessforall@nationaltrust.org.uk)

September 2022