

National Trust Cottages Accessibility Guide

Tintinhull

Yeovil

Property Ref: 003025



INTRODUCTION

Tintinhull is a detached manor house, part of which is the holiday cottage. Between March and October, the renowned gardens are open to the public. There is a cobbled driveway and entrance area to the front of the cottage with a paved pavement in front of the house. The cottage can accommodate 8 guests plus a cot. The ground floor has a porch, kitchen with aga, utility room, dining room, sitting room and a hall. The first floor contains two twin bedrooms off a landing and two double bedrooms and two bathrooms off a corridor. The cottage has oil central heating and radiators and a wood burner in the lounge. There is an expansive exhibition garden to the side of the property with paved patio areas and paths, lawns and unfenced ponds.

Pre-Arrival

- See the main webpage for Tintinhull ([Tintinhull House Somerset | National Trust](https://www.nationaltrust.org.uk/tintinhull-house-somerset)) for booking and location details.
- To enable our housekeepers to prepare the cottage for any particular accessibility requirements you might have, please contact guestrelations@nationaltrust.org.uk.
- Directions are provided electronically three weeks prior to travel. If you need a printed (or large print) version of any of our holiday documents, please contact guestrelations@nationaltrust.org.uk.
- If, having read this accessibility guide, you still require further information, e.g. a social storybook guide, please contact guestrelations@nationaltrust.org.uk

Arrival & Parking Facilities

- The cottage is located in the centre of Tintinhull village and is part of the main Tintinhull Estate
- There is parking for many cars in a designated National Trust car park some 100 yards from the house.
- There is a level hard surface to the front door.
- The key is obtained from a key safe located under the outside light to the left of the main door – the key safe is 1600mm high

Getting in (and out) of the cottage

- The front door has a clear opening width of 850mm.
- The door lock is at 1200mm.
- The front door leads directly into a porch with a door mat and one step down of 220mm.



Ground floor:

- Level access
- Stone flooring to the porch, hall and kitchen, stone flooring in the sitting room with 2 rugs, and wooden flooring in the dining room with a large central rug

Kitchen:

- Sink unit and drainer.
- Wall and floor cabinets, with a worktop with a height of 900mm
- Electric aga
- Three ceiling pendants and recessed lighting
- Fridge/freezer, dishwasher, microwave, cordless kettle, toaster
- Flagstone flooring
- Large kitchen table, leg clearance varies between 610mm and 670mm, 8 wooden kitchen chairs, seat height 430mm, 2 with arms, arm height 660mm.



Utility Room

- The utility room is located next to the kitchen.
- Wall and floor cabinets, with a worktop with a height of 900mm
- Washer/dryer
- Sink and drainer.
- Electric oven and hob
- Ceiling pendant light



Dining Room

- Level wooden floor with a large centre rug
- Dining table, under table clearance 610mm, 6 padded wooden chairs, seat height 460mm, 2 padded wooden chairs with arms, seat height 490mm, arm height 690mm.
- A central chandelier and reading lamp.
- Radiator and additional portable oil filled radiator.



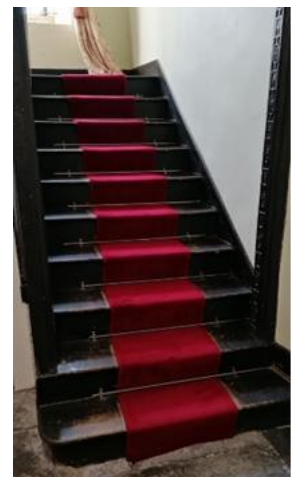
Sitting Room

- Large room with flagstone floor and 2 rugs
- Two 3-seater sofas and large armchair, seat height 470mm
- Small armchair, seat height 380mm
- Wood burner
- Radiators and portable oil filled radiator.
- Coffee table between the sofas and armchair
- Door with 4 stone steps down to garden



Stairs

- The stairs lead to a landing off which are the two twin bedrooms and 4 steps to a corridor leading to the two double bedrooms and the two bathrooms. There is one step on the landing to the second twin bedroom.
- The stairs are 980mm wide with each tread having a height of 180mm, there is a banister rail on the side of the stairs.
- Carpeted runner on the stairs



First Floor

Large Double Bedroom

- 6'/1830mm wide x 6'4"/1950 long x 2'/620mm high
- Bed height 600mm
- Clearance under bed 150mm
- One central pendant with a two bedside lamps
- Large wardrobe with clothes rails
- Chair with seat height of 380mm
- Windows with views over the main garden
- Space between the bed and wall on the near side is 2010mm.
- Space between the foot of the bed and the wall is 2100mm.
- Space between the bed and the wall on the far side is 1950mm.
- Chest of drawers/cabinet
- Radiator
- Large carpet covering the majority of the wooden floor.
- Good circulation room



Double Bedroom

- Double bed 5'/1500mm wide x 6'4"/1950mm long x 25"/630mm high
- Bed height 600mm
- Clearance under bed 150mm
- One ceiling light with a two bedside lamps
- Wardrobe with clothes rail
- Two chairs with seat height of 390mm
- Window with views over the main and side garden from double aspect windows
- Chest of drawers
- Radiator and portable oil filled radiator
- Large carpet covering the majority of the wooden floor
- Good circulation room



Twin Bedroom

- Two single divan beds 920mm wide x 1950mm long x 670mm high
- One central pendant and one bedside lamp
- Wardrobe with clothes rail
- Chair with seat height of 460mm
- Window with view over the cobbled courtyard
- Space between the bed and wall on the near side is 1740mm
- Space between the foot of the bed and the wall is 1900mm
- Space between the bed and the wall on the far side is 1090mm
- Space between the beds is 950mm
- Radiator
- Door to second twin bedroom with one step up
- Large carpet covering the majority of the wooden floor
- Good circulation room



Smaller Twin Bedroom

- Two single beds 920mm wide x 1950mm long x 580mm high
- One central pendant, and one bedside lamp
- Built in wardrobe with clothes rail.
- Chair with seat height of 460mm
- Window with view over the cobbled courtyard
- Space between the bed and wall on the near side is 40mm.
- Space between the foot of the bed and the wall is 1120mm.
- Space between the bed and the wall on the far side is 110mm.
- Space between the beds is 950mm.
- Radiator
- Door to first twin room with one step down
- Large carpet covering the majority of the wooden floor.



En-Suite/ Bathroom

- Directly off the corridor with another door to the large double bedroom
- Clear opening width of doors 850mm
- WC is 410mm high.
- Sink is 830mm high.
- Bath side 590mm from floor – width 800mm – mixer pipe on taps
- Wooden floor



First Floor Second Bathroom

- Directly off the corridor
- Clear opening width of door 850mm
- WC is 410mm high.
- Sink is 830mm high.
- There is a large feature roll top bath in the centre of the room.
- Heated towel rail
- Painted wooden floor.
- Separate shower





Holidays

Additional Information

- Assistance dogs are welcome at all our cottages. If you are bringing an assistance dog to a non-dog cottage, please contact guestrelations@nationaltrust.org.uk so we may contact all future guests in case of an allergy.
- In the event of a fire, it is the responsibility of the guests to evacuate themselves. Under pillow vibration alarms are available if requested at time of booking.
- If you required the WiFi to be turned off, please advise us in advance.
- If you have any allergies, please contact guestrelations@nationaltrust.org.uk.

Specialist equipment

Other specialist equipment such as wheelchairs, bath seats, toilet frames, hoists etc. may be available for loan or purchase from a local disability equipment provider. For further details, please contact guestrelations@nationaltrust.org.uk. Please note that any contacts supplied are done so in good faith and are not endorsed by the National Trust.

Feedback

All feedback is very helpful in informing us of ways in which we can improve access to all our accommodation. We welcome any comments or ideas from you to guestrelations@nationaltrust.org.uk.

Photographs by:

April 2023