

National Trust Cottages Accessibility Guide

The Mill Cottage
Wembrey
Plymouth



Property Ref: 012022

Introduction

The property is located just above a beach and next to a beach cafe

Sleeps up to 4 people in 3 bedrooms, with a first floor bathroom with a shower over the bath. There is good circulation throughout, tiled floors downstairs and carpet upstairs. There are steps down into the kitchen.

The property has electric heating and a wood burner, with additional portable heaters available.

There is no WIFI or mobile signal. Payphone telephone in the sitting/dining room

The Cottage is arranged as follows:

Ground floor

Sitting/dining room with solid fuel stove, steps down to kitchen.

First floor

Three bedrooms (1 double, 2 singles), bathroom with shower over bath.

Pre-Arrival

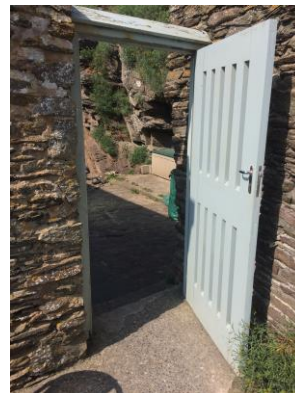
- See the main webpage for booking and location details.
- Please contact us prior to booking if you have any specific access requirements.
- Directions provided with booking

Approach

The property is approached by a single lane, tarmacked, no through beach road, with passing places.

Arrival & Parking Facilities

- There is a dedicated tarmacked parking space before the car park and next to the information building approximately 100metres from the property. Additional parking is available in the NT car park at the end of the lane.
- It is possible to get closer to the property to unload approximately 50 metres away by the wooden bollards/posts.
- The property is accessed by a wooden gate width 900mm and down a sloping tarmacked footpath, length 15 metres
- Wooden key box with dial combination lock located on the wall to the left, height XX
- There is a further gate, width 790mm and down two uneven steps, heights 150mm and 120mm, tread 760mm, leading into a shared café staff courtyard.
- The front door is approx. 5metres from the courtyard gate
- There is outside lighting by the front door but if arriving after dark it is advisable to have a torch



Getting in (and out) of the cottage

- Front door width 800mm, height 1860mm,
- Tapered wooden threshold, height 120mm, width 180mm, drop 70mm, door handle
- Opens into a hallway, width 790mm, length 1540mm, coir matting
- Coat hooks, height 1700mm
- Ceiling light

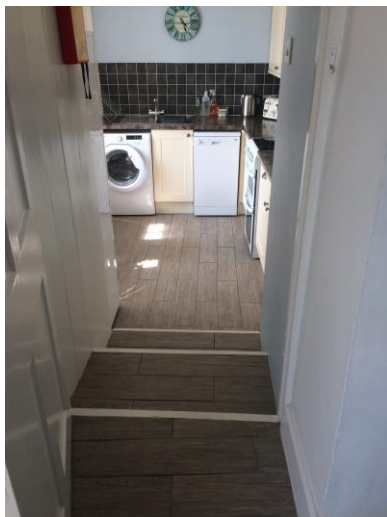


Getting around the cottage

Ground floor:

The ground floor has ceramic wood effect tiling throughout.

There are uneven steps down into the kitchen area, step heights 50mm, 120mm and 160mm, treads 440mm and 340mm and widths of 810mm, 850mm and 820mm



First floor:

- Split level half turn carpeted stairs are through a door off the living area. Door width 700mm
- Uneven step heights from 190mm to 200mm, tread 230mm, width 850mm
- Top uneven steps, stair heights 130mm, 150mm, 150mm, treads 240mm, width 900mm
- Handrail banisters to the right when ascending
- Wooden stairgate at first split level landing area
- Split level landing leads to single bedroom and bathroom, width 600mm widening to 840mm
- Top landing, initial width 850mm widening to 1340mm with sloping uneven floor
- Window with views over the beach and sea on top landing
- Ceiling pendant light on each landing



Sitting/dining room

- Door from the hall, width 720mm, height 1800mm
- Wood effect porcelain floor tiles
- Rug with anti-slip underlay
- Wood burner
- 1 x 2 seater settee, seat height 430mm
- 2 x winged back armchairs, seat height 440mm
- Window with views over the beach and sea
- Window seat, seat height 560mm
- 2 x pairs of wall lights, 1 x single wall light, 1 x floor lamp with on/off switch on the cable
- Drop leaf dining table, height 740mm, clearance underneath 710mm
- 4 x wooden dining chairs, seat height 470mm plus a high chair
- Good circulation



Kitchen

- Door width 790mm
- Steps into kitchen step heights 50mm, 120mm and 160mm, treads 440mm and 340mm and widths of 810mm, 850mm and 820mm. Tapered walls
- Continuation of wood effect porcelain tiled floor
- Height of worktop is 900mm
- Fitted kitchen with electric double oven and ceramic hob, tall standalone fridge/freezer, slim-line dishwasher, microwave, washer/dryer
- Sink with ceramic washer lever mixer taps
- Ceiling track lighting with 6 spotlights, window with views over the beach and sea
- Good circulation, width by fridge/freezer 970mm, widening to 1460mm



First Floor:

Single Bedroom

- Door width 760mm, height 1780mm, level threshold
- Carpet
- Single divan bed, width 900mm, length 1850mm, height 630mm
- Bedside table, lamp with under lampshade on/off switch
- Ceiling pendant light with mains switch and a light pull by the bed
- Window with views over the beach and sea
- Hanging rail area, height of rail 1680mm, chest of drawers
- Chair, seat height 460mm, no arms
- Bed is against the wall and width of bed wall/door 950mm



Family Bathroom

- Door width 740mm, height 1940mm, level threshold
- Linoleum floor
Toilet, sink and bath with electric shower over
- Toilet height 410mm with push flush on wall
- Bath height 540mm with washer twist taps
- Pivoted folding shower screen. Shower controls height 1620mm, low ceiling over the bath
- Fitted sink unit, height 820mm with washer twist taps
- Shaver socket 1750mm
- Circulation around the bath 880mm
- Window over courtyard and bank, ceiling light and light over mirror
- Split level platform, 2 x steps up, step heights 170mm and 270mm, tread 130mm, reduced headroom height 1530mm, leading to chair, seat height 460mm and towel rail



Single Bedroom

- Door width 800mm, height 1940mm, level threshold
- Single divan bed, width 900mm, length 1850mm, height 630mm
- Bedside table with lamp, under lampshade on/off switch. Ceiling globe light
- Window with views over the courtyard and up to church
- Hanging rail area, height of rail 1780mm, chest of drawers
- Chair, seat height 420mm, no arms
- Bed is against the wall, circulation width of bed to the door of 1700mm



Double Bedroom

- Door width, 800mm, height 1940mm, level threshold
- Carpet
- Double divan bed width 1400mm, length 1900mm, height 650mm
- 2 x side tables, bedside lamps with under lampshade on/off switches
- Ceiling pendant light with mains switch and light pull by the bed
- Window with views over the beach and sea
- Chair, seat height 480mm
- Hanging rail, height 1800mm, chest of drawers
- Circulation, sides of bed 400mm, end of bed 2500mm



Outdoors

- Access to the beach is via the front door
- There is an informal seating area by the front gate on the low cliff edge with views over the sea

Additional Information

- Assistance dogs are welcome at all our cottages
- In the event of a fire, it is the responsibility of the guests to evacuate themselves. Vibrating fire/smoke detectors are available if requested at time of booking. Please contact us if you have any other specific access requirements in this respect.

Facilities at all cottages

The National Trust aims to expand the list of accessible /equipment/items available at each cottage and these may include

- Cordless kettle
- Hollowfibre bedding
- Chair with armrests
- Good reading light
- Large handle vegetable peeler
- Easy tin opener
- Non-slip mat for bath/shower
- Non-slip place mat
- Easy jar opener
- Information in alternative formats (on request)

Please note that we cannot guarantee that all items will be available at the time of your visit. Please enquire at the time of booking regarding any particular requests.

Specialist equipment

Other specialist equipment such as wheelchairs, bath seats, toilet frames etc may be available for loan or purchase from the local Red Cross loan centre. Please check this out before booking the Cottage and contact us if you require further information.

<http://www.redcross.org.uk/standard.asp?id=89425>

Future Plans to improve Accessibility to National Trust Holiday Cottages

We are currently in the process of writing accessibility guides for all our holiday cottages and improving access over time for all our guests. All feedback is very helpful in informing us of ways in which we can improve access to all our cottages. We welcome any comments or ideas from you about access at this cottage and thank you for taking the time to do this. Please do this in the most convenient way for you. See contact details below or information on website.

About the Accessibility Guide

This Accessibility Guide is intended to provide key information about the cottage that may be particularly relevant to guests with disabilities. It is reviewed annually. Please contact us prior to booking if you would like more detailed information and we will be happy to oblige.

Phone: 0344 800 2070

Email: cottages@nationaltrust.org.uk

Access for All at the National Trust

We continue to work to improve accessibility at all our holiday cottages. We welcome comments and ideas on improving access.

Phone: 0344 800 2070

Email: cottages@nationaltrust.org.uk

Date 13 July 2018