

National Trust Cottages Accessibility Guide (April 2023)

Willow

Crom Estate
Newtownbutler

Ref: 019010



Introduction

- The bay window offers excellent views of woodland and lawn. It is only a short stroll to the banks of Lough Erne.

The cottage is arranged as follows:

Ground Floor:

- Sitting / dining room, kitchen.
- A

First Floor:

- Bathroom with shower over bath, double bedroom, single bedroom.

Pre-Arrival

- See the main webpage for booking and location details.
- Please contact us prior to booking if you have any specific access requirements.
- Directions provided with booking.
- Please bring a torch if arriving after dark.

Approach

- Single track tarmac road through the Estate, passing one cattle grid and two speed ramps.
- The approach is well signed for Holiday Cottages with National Trust logo.

Arrival & Parking Facilities

- Parking in gravel courtyard immediately outside cottage door with paved path area around Courtyard and leading to cottage.
- The key for the cottage is kept in a key safe within the laundry room. The laundry room is located on the left-hand side of the courtyard archway upon entering. There is an 80mm step into the laundry room, an outside door 850mm wide and inside door 700mm wide. The key safe is located on the right-hand side 1600mm high from the ground, each key safe is labelled for each cottage.



Getting in (and out) of the cottage

- Step into cottage 108mm high.
- Door is 780mm wide into porch way with level flagstone flooring.
- Inner door into carpeted sitting / dining room 700mm wide.

Getting around the cottage

Ground Floor

- Level access throughout the ground floor.
- Floor surfaces are a mixture of carpet and linoleum.
- Internal door widths are 700-740mm.

First Floor

- Carpeted staircase with 12 steps, width 760mm at narrowest point, steps 220mm high to first floor with handrail to right hand side ascending.

Sitting Room

- Door access 700mm wide into carpeted sitting / dining room.
- Two-seater sofa 460mm high and armchair 430mm high.
- Open fire.
- Dining area with wooden dining table 710mm high with 650mm clear knee space underneath.
- Three wooden chairs, all with backrest 450mm high.
- Views to woodland.
- Adjoining door to Orchard View 760mm wide.
- Nest of tables and tray table placed around edges of room.
- TV unit with TV and DVD player.
- Built-in shelves.
- Two x overhead lights.
- Two mantelpiece lights.
- One table lamp.
- Door to hallway/stairs 740mm wide.



Stairwell/Landing

- Storage cupboard underneath stairs.
- Coat hooks 1600mm high.
- Hot Press.
- Emergency light.
- Combined smoke/carbon monoxide detector.
- Two overhead lights.

Kitchen

- Door to kitchen is 740mm wide into level vinyl flooring.
- The kitchen has fitted units with built in cooker with electric hob, washing machine, fridge freezer and microwave. Kitchen worktop is 910mm high.
- Sink has lever mixer tap.
- Overhead pendant light.
- Extractor fan above hob.
- Fire blanket above radiator 1650mm from ground.
- Combined smoke/Carbon monoxide detector.



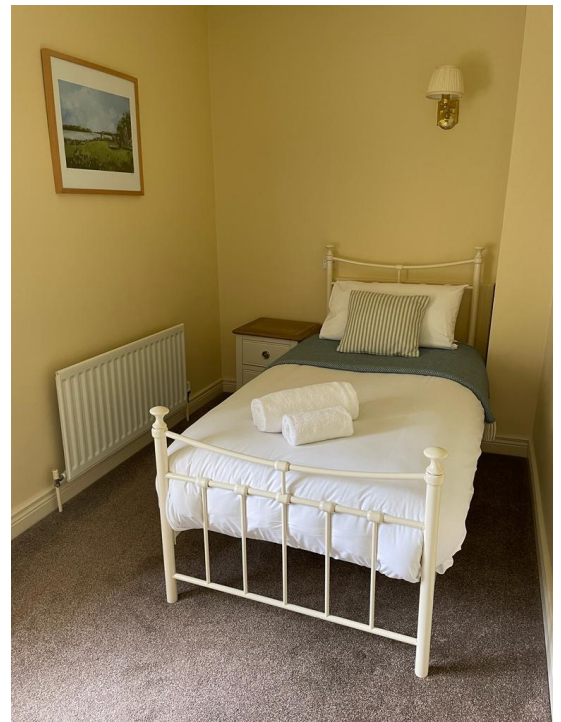
Double Bedroom

- Door 710mm wide.
- Divan bed 670mm high x 2000mm long x 1400mm wide. 45mm space under bed.
- Small bedside locker each side of bed.
- Free standing wardrobe, chest of drawers and tall wall mirror.
- Views to courtyard.
- One overhead light.
- Two over bed wall lights.
- Combined smoke/carbon monoxide detector.
- Distances form bed: 1250mm from radiator; 400mm to window; 750mm to units.



Single Bedroom

- Door 710mm wide.
- Metal frame bed 540mm high x 1950mm long x 900mm wide.
- 270mm space under bed.
- Small bedside locker to left hand side of bed.
- Chest of drawers.
- Views to woodland.
- One overhead light.
- One over bed wall light.
- Coat hooks 1540mm from ground.
- Distance form bed: 730mm from radiator.
- Combined smoke/carbon monoxide detector.



Bathroom

- Door 740mm wide.
- Bathroom comprises WC, basin and electric shower over bath.
- Toilet is 440mm high.
- Basin is 870mm high with cupboard underneath.
- Bath is 560mm high x 680mm wide x 1670mm long.
- Shower unit controls are 1400mm high.
- Two recessed ceiling lights.
- Extractor fan.
- Heated towel rail.



Garden

- 2-seater garden metal chair outside door on path.
- No designated garden area for cottage but surrounded by countryside and several picnic benches close to the cottage which can be used by guests.

Additional Information

Facilities at all cottages

The National Trust aims to expand the list of accessible /equipment/items available at each cottage and these may include

- Cordless kettle
- Hollowfibre bedding
- Chair with armrests
- Good reading light
- Large handle vegetable peeler
- Easy tin opener
- Non-slip mat for bath/shower
- Non-slip place mat
- Easy jar opener
- Information in alternative formats (on request)

Please note that we cannot guarantee that all items will be available at the time of your visit. Please enquire at the time of booking regarding any particular requests.

Specialist equipment

Other specialist equipment such as wheelchairs, bath seats, toilet frames etc may be available for loan or purchase from the local Red Cross loan centre. Please check this out before booking the cottage and contact us if you require further information.

<http://www.redcross.org.uk/standard.asp?id=89425>

Future Plans to improve Access to National Trust Holiday Accommodation

- We are currently in the process of writing accessibility guides for all our holiday cottages and bunkhouses and improving access over time for all our guests. All feedback is very helpful in informing us of ways in which we can improve access. We welcome any comments or ideas from you about access at this cottage and thank you for taking the time to do this. Please do this in the most convenient way for you. See contact details below or information on website.

About the Accessibility Guide

- This Accessibility Guide is intended to provide key information about the accommodation that may be particularly relevant to guests with disabilities. Please contact us prior to booking if you would like information that is more specific and we will be happy to oblige.

Email: holiday.enquiries@nationaltrust.org.uk

Phone: 0344 8002070

Access for All at the National Trust

- The Access for All office works to improve access at all National Trust accommodation and properties. The office welcomes comments and ideas on improving access.

Phone: 01793 818531

Email: accessforall@nationaltrust.org.uk

Date April 2023