

National Trust Cottages Accessibility Guide

Woody's
Far End
Sheepscombe
Gloucestershire
GL6 7RL



Property Ref 003036

Introduction

The detached cottage is located on the edge of the Ebworth Estate and on the outskirts of the village of Sheepscombe. It has a large and private garden with views over the green fields of the valley and adjacent to National Trust woodland.

Sleeps up to 4 people in 2 bedrooms and has an open plan living room/diner with level block wood flooring.

The property is heated by electric heaters and has a wood burner.

The Cottage is arranged as follows:

Ground Floor:

- Hall, lavatory, kitchen, sitting/dining room with wood-burning stove, external access to utility room and sunroom

First Floor:

- Two bedrooms (1 twin, 1 double with 6' bed which can also be a twin on request) bathroom with mixer tap attachment

Pre-Arrival

- See the main webpage for booking and location details.

- Please contact us prior to booking if you have any specific access requirements.
- Directions provided with booking

Approach

- The property is approached by countryside lanes and along a narrow 'no through' single track lane with few passing places. The property is located at the end of the 'no through' lane.

Arrival & Parking Facilities

- Parking at the end of the lane by the front gate on tarmac, or in the open garage at the end of the lane on the left, where the lane becomes track into the National Trust woodland.
- Front gate width 1120mm and a concrete path gently slopes down to the front door.
- Solar lights along the length of the front path and outside light but if arriving after dark it is advisable to have a torch.

Getting in (and out) of the cottage

- Front door width 710mm with no threshold.
- Key box with press combination lock to the left of the front door, height 1110mm • Opens into a porch area width 1400mm, length 2200mm with level concrete floor.
- Back door from the living room opens onto the terrace, width 860mm, minimal sloping threshold



Getting around the cottage

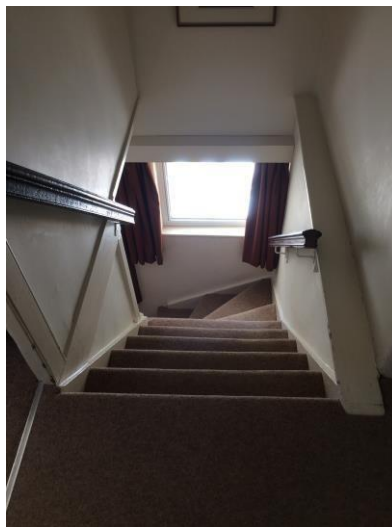
Ground floor:

- Inner front door (from porch), width 710mm leading into hallway with woodblock floor
- Curved wall into living room
- Minimum width in hallway 880mm

- Level threshold between all rooms
- Level threshold to outside utility

First floor:

- Carpeted quarter-turn stairs with winders, from the open plan living/dining room • Stair height 220mm, tread 230mm
- Bottom stair is wood with height 190mm tread 320mm
- Handrail both sides of stairwell
- Landing area with carpet 800mm by 1420mm
- Doors leading off the landing to bedrooms and bathroom with level thresholds



Downstairs Toilet

- Door width 740mm with Suffolk latch height of 1460mm
- Continuation of woodblock floor, no thresholds
- Toilet height 460mm with lever handle
- Corner sink, height 900mm with washer twist taps

Kitchen

- Minimum width into kitchen (no door) 630mm
- Continuation of level wood block floor
- Height of worktop 940mm
- Fitted kitchen with double electric oven and ceramic hob, dishwasher, microwave, fridge • 4 track lighting
- Window over back garden area and woodland beyond

Open Plan Sitting/Dining Room

- Door width 700mm, no threshold

- Continuation of woodblock floor from the hall
- Wood burner with guard
- 1 x 2 seater settee, seat height 430mm
- 1 x leather armchair, seat height 490mm
- 1 x wing backed armchair, seat height 470mm
- Dual aspect windows over gardens and valley beyond
- Glass door to outside terrace and garden, width 860mm
- Dining table height 710mm, clearance under 580mm
- 4 x wooden chairs, seat height 430mm
- 1 x wooden chair with arms and leather seat pad, seat height 470mm
- 3 x floor lamps with on/off switches under lampshade
- 3 x table lamps, 2 connected to the mains switch, 1 with on/off switch under lampshade



Bathroom

- Door width 750mm with Suffolk door latch at a height of 1450mm
- Linoleum floor
- Toilet, basin and bath with hand held lever shower attachment
- Toilet height 420mm with lever handle
- Bath height 560mm and has a grab handle on wall and washer twist taps
- Basin height 830mm with washer twist mono taps • Mirror over sink with shaver socket, height 1820mm
- Ceiling light and window to track.



Outside Utility

- Door width 900mm with level threshold
- Linoleum floor
- Good circulation
- Freezer, washer/dryer
- Sink with mono lift lever tap

Twin Bedroom

- Door width 710mm, height 1800mm, no threshold, Suffolk latch at a height of 1400mm
- Continuation of landing carpet
- Divan beds width 900mm, length 1900mm, height 620mm
- Central shared bedside table with lamp
- Chair, seat height 370mm
- Dual aspect windows over gardens and valley beyond
- Hanging hooks
- Circulation between beds, 1270mm and at the end of the beds, 700mm

Double Bedroom

- Door width 790mm, height 1780mm, no threshold, Suffolk latch 1400mm
- Continuation of landing carpet
- Divan double bed 1800mm, length 1900mm, height 620mm
- 2 x bedside tables, chest of drawers
- 3 x table lamps with on/off switch under lampshade, floor lamp connected to mains switch
- Window with views over back garden and valley beyond
- Chair with upholstered seat pad, seat height 440mm
- Good circulation

Garden and Sun Room

- Large garden, mainly laid to lawn with a wide, paved terrace outside the house

- Garden is fenced and adjacent to fields at the end
- Stone steps down from the terrace to the lawns or from the main front path via gently sloping lawn
- Sun Room at the end of the terrace with a variety of seating
- Variety of outdoor seating and benches around the garden



Additional Information

- Assistance dogs are welcome at all our cottages
- In the event of a fire, it is the responsibility of the guests to evacuate themselves. Vibrating fire/smoke detectors are available if requested at time of booking. Please contact us if you have any other specific access requirements in this respect.

Facilities at all cottages

The National Trust aims to expand the list of accessible /equipment/items available at each cottage and these may include

- Cordless kettle
- Hollowfibre bedding
- Chair with armrests
- Good reading light
- Large handle vegetable peeler
- Easy tin opener
- Non-slip mat for bath/shower
- Non-slip place mat
- Easy jar opener
- Information in alternative formats (on request)

Please note that we cannot guarantee that all items will be available at the time of your visit. Please enquire at the time of booking regarding any particular requests.



Specialist equipment

Other specialist equipment such as wheelchairs, bath seats, toilet frames etc may be available for loan or purchase from the local Red Cross loan centre. Please check this out before booking the Cottage and contact us if you require further information.

<http://www.redcross.org.uk/standard.asp?id=89425>

About the Accessibility Guide

This Accessibility guide is intended to provide key information about the cottage that may be particularly relevant to guests with disabilities. It is reviewed annually. Please contact us prior to booking if you would like more detailed information and we will be happy to oblige.

Phone: 0344 800 2070

Email: cottages@nationaltrust.org.uk

Access for All at the National Trust

We continue to work to improve accessibility at all our holiday cottages. We welcome comments and ideas on improving access.

Phone: 0344 800 2070

Email: cottages@nationaltrust.org.uk

Date: March 2024