

National Trust Cottages Accessibility Guide

**Woolley Lodge
Shirwell
Barnstaple**

South West Region

Cottage Ref: 012003



Introduction

Woolley Lodge is a former gardener's lodge which is isolated and tucked away behind wrought iron gates just off the main A39 from Barnstaple to Exmoor. It is on the south western edge of the Arlington Estate.

The cottage has electric radiators, portable electric oil filled heaters, a multi-fuel stove, underfloor bathroom heating and an electric towel rail

The accommodation is a single storey building comprising the following:

- Entrance and dining hall, sitting room, kitchen, single bedroom, rear passage, double bedroom, utility room, bathroom with shower over bath
- The cottage is furnished for three people
- One dog is permitted to the cottage but must not be allowed on the furniture or on the beds
- There is no wifi. Mobile phone signal depends on the network provider

Pre-Arrival

- See the main webpage for booking and location details
- Please contact us prior to booking if you have any specific access requirements
- Directions provided with booking

Approach

- The cottage is approached via main roads. Turning off the main road, a gravelled track lies before black wrought iron gates. The gates are always closed and need to be opened by lifting an iron bar from its keep and latch
- Upon exiting the cottage, a road safety mirror is positioned opposite the drive to enable full vision before pulling out onto the road



• Arrival & Parking Facilities

- Parking in front of the cottage
- The car parking area is level. A level, gravelled path leads to four steps to the entrance. On the final step there is a porch area where a key safe is to the left of the front door. It is operated by a combination lock mechanism. A torch is recommended, especially if arriving in the dark, as the numbers on the lock can be difficult to see
- A movement sensor light is fixed to the porch door



Car park area

Getting in (and out) of the cottage

- The steps to the front door are uneven with the deepest step 200mm

- A low wooden threshold over the door
- The clear opening width of the door is 800mm
- The door opens onto a coir mat and into the dining hall
- The light switch is on the right hand side at a height of 1360mm behind the curtain
- Minimum clear door opening width of internal doors is 650mm
- There is a back door in the between the double bedroom and bathroom – step down to outside is 140mm with an inside threshold of 40mm



Movement sensor above door

Getting around the cottage

- There are a number of steps inside the cottage
- There is a 100mm step-down from the entrance/dining hall to the sitting room
- There is a 110mm step -down from the sitting room to the rear hallway
- Small step 5cm down into double bedroom
- Two steps up to the bathroom
- The minimum internal door clearance ranges from 660mm to 710mm
- Floorings are vinyl, carpet, flagstone and wood
- External door from the rear passage to side of the cottage with log store, washing line and pathway which leads to the front garden

Entrance/ Dining Hall

- Dining hall with wood floor and scatter rug with anti-slip underlay
- A gate-leg fold down dining table and two high back dining chairs with seat heights of 400mm. Table size with extension flaps is 45" x 34"/ 1105 x 860mm
- A third chair is in the single bedroom
- The table has a height of 720mm; knee clearance of 680mm
- One central pendant
- Small cupboard with table lamp
- Minimum circulation space when the table is fully extended
- Full length curtains for the front door



Dining table and view to kitchen

Front entrance and door to single bedroom

Single Bedroom:

- One 3'900mm single feature bed x 6' 3" /1900mm long x 3' 6"/900mm wide
- Floor to top of mattress 29"/738mm high
- Bed positioned against wall
- One ceiling light and one bedside table with lamp
- 2 over 2 chest of drawers
- Wooden chair
- Wall mounted mirror
- Built in cupboard with hanging rail at 1830mm and one low shelf
- 2 low level lattice windows, with curtains, with views of the garden
- Minimum circulation space between the bed and the chest of drawers



Kitchen:

- Height of worktop is 900mm from floor level around sink area and a lower worktop of 750mm. Under and above counter storage
- Sink with lever controls on the swan neck kitchen tap
- Integrated electric cooker, with 4 heat spots and with grill and ceramic hob. Controls for the hob to the right hand side
- There is a low, hood extractor above the hob – the hood base is 1600mm from floor level
- Microwave, cordless kettle and 4 slice toaster
- Fridge with small freezer compartment

- Standalone dishwasher under worktop
- 4 x LED spotlights on a track giving good lighting levels
- Under cupboard lighting
- Portable CD Radio Player
- 2 windows, with no curtain/blind – views to garden



Sitting Room

- A step of 100mm leads from the dining hall to the sitting room
- Multi-fuel fire in inset fireplace
- Two windows on roadside of cottage with full length curtains
- Two-seater sofa with seat height 440mm with back height 570mm and one high back wing chair with a seat height of 430mm back height 640mm
- Lighting comprises 2 floor lamp and ceiling centre light. Main light switch is 1460mm from floor level
- 28-inch TV with separate DVD
- Nest of tables
- Lift up log storage box



With View to dining hall – with small step

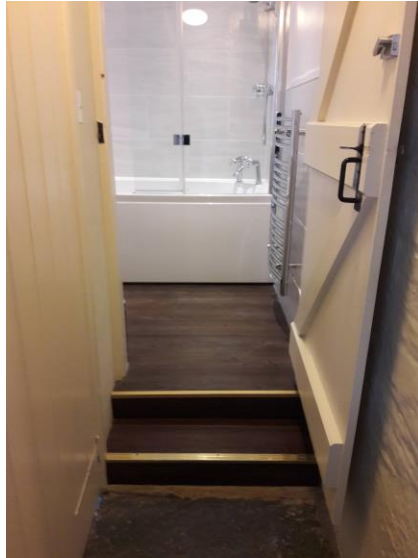


Step from sitting room to rear passage and into double bedroom

Double Bedroom:

- 4'6"/1370mm wide feature bed 6'3/ 1900mm long x 28 / 710mm high
- Bed in centralised position in room, facing the window
- There is limited circulation either side of bed
- A 2 over 3 chest of drawers
- 2 x bedside tables
- 2 x wall mounted peg hooks for clothes hanging are provided
- 1 x robe hook mounted on the door
- Further hanging space on wall behind door at 1620mm
- Double wall lights and two single wall lights, one above each bedside table
- There is a switch above each bedside table to operate the wall lights above the bed
- Chair without arms
- Wall mounted long mirror 35"
- Window with curtains





Steps into bathroom

Bathroom:

- Two steps to bathroom, first step is 120mm and second step is 130mm
- Bath with twist taps
- Adjustable shower above the bath. The height of the twist controls is 1110mm from the bath floor
- Bath is 640 mm wide x 1500 mm long x 600 mm high
- Hand basin is 850 mm high with twist taps and a push-in plug
- The WC is 400 mm high
- Mirror and shaver point above hand basin
- The room is lit with four recessed ceiling spotlights with a pull cord switch just inside the door at a height of 1220mm high
- Heated towel rail
- Small window with no curtain/blind



Utility Room

- Located off the rear passage there is a step down into this small area
- Washing machine at high level – height is 1150mm to load
- Shelf above washing machine for storage
- Consumer Unit at low level



Back door entrance

Garden:

- Large level garden at front of cottage with picnic table on the grass
- No secure enclosed area



Additional Information

- Assistance dogs are welcome at all our cottages

- In the event of a fire, it is the responsibility of the guests to evacuate themselves. Vibrating fire/smoke detectors are available if requested at time of booking. Please contact us if you have any other specific access requirements in this respect
- Emergency lighting will activate should there be a power failure. The lights are located on the ceiling of entrance hall, sitting room and rear passage

Facilities at all cottages

The National Trust aims to expand the list of accessible /equipment/items available at each cottage and these may include:

- Cordless kettle
- Chair with armrests in dining room and living room.
- Good reading light
- Non-slip mat for bath/shower
- Non-slip place mat
- Hollowfibre duvets and pillows
- Information in alternative formats (on request)

Please note that we cannot guarantee that all items will be available at the time of your visit. Please enquire at the time of booking regarding any particular requests.

Specialist equipment

Other specialist equipment such as wheelchairs, bath seats, toilet frames etc. may be available for loan or purchase from the local Red Cross loan centre. Please check this out before booking the Cottage and contact us if you require further information.

<https://www.redcross.org.uk/get-help/borrow-a-wheelchair>

<https://www.redcross.org.uk/get-help/hire-a-toilet-aid>

Future Plans to improve Access to NT Holiday Cottages

- We are currently in the process of writing accessibility guides for all our holiday cottages and improving access over time for all our guests. All feedback is very helpful in informing us of ways in which we can improve access to all our cottages. We welcome any comments or ideas from you about access at this cottage and thank you for taking the time to do this. Please do this in the most convenient way for you. See contact details below or information on website.

About the Accessibility Guide

- This Accessibility Guide is intended to provide key information about the cottage that may be particularly relevant to guests with disabilities. Please contact us prior to booking if you would like information that is more specific and we will be happy to oblige.

Phone: 0344 8002070

Email: holiday.enquiries@nationaltrust.org.uk



Access for All at the National Trust

- The Access for All office works to improve access at all National Trust cottages and properties. The office welcomes comments and ideas on improving access.

Phone: 01793 818531

Email: accessforall@nationaltrust.org.uk

May 2023