

National Trust Cottages Accessibility Guide

October 2022

Honor's House

Foage farm

ZENNOR

Cornwall

TR26 3BU

Ref: 011061



Introduction

- Honor's House is a traditional stone built, detached farm cottage situated on a working farm. It has far reaching rural views together with distant sea views to the front.

Pre-Arrival

- See the main webpage for booking and location details.
- Please contact us prior to booking if you have any specific access requirements.
- Directions provided with booking

Arrival & Parking Facilities

- The cottage is 1 mile from the main road at Zennor, accessible by an uneven, single lane farm track with occasional passing places. It is hard packed granite at the beginning but changes to twin tarmacadam paths with grass centre (*single lane still*) about halfway. The parking area is a compacted granite chipping and earth hard standing and is located in front of the garage.

Getting in (and out) of the cottage

- A granite chipping pathway leads to lines the front lawn, parking area and continues around the cottage to the rear garden. The combination key safe for the front door is on the wall to the left of the door.
- There is an outside light but it is recommended to bring a torch to set the correct lock combination on arrival. Keys to be returned to safe on final departure.
- There is a 200mm granite step up to front door which is 800mm wide and opens inwards.

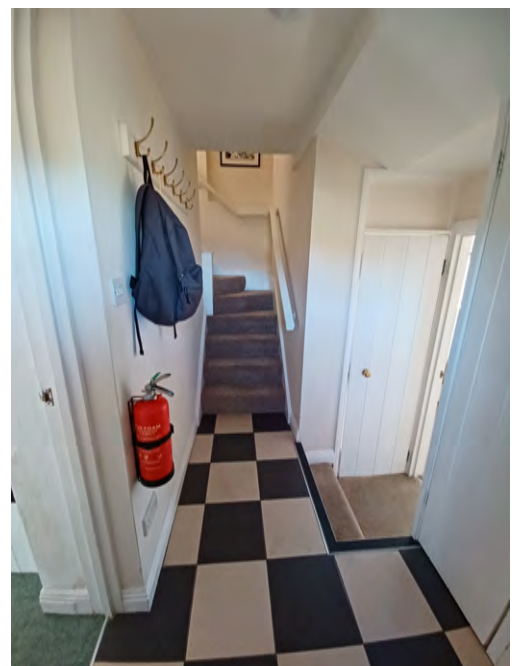


Getting around the cottage

Ground Floor:

Entrance Hallway

- 800mm wide, part glazed, front door into hallway.
- Laminate tiled flooring.
- Ceiling light with built in emergency lamp.
- Wall mounted coat rack with 6 hooks.
- Stairway to first floor.



Kitchen/Diner

- 740mm wide doorway from hall.
- Vinyl flooring.
- Eleven recessed ceiling down-lights controlled by two dimmer switches.
- Night storage heater.
- Sash window, with deep sill, to front aspect (500mm W x 1,000mm H).
- Sash window, with deep sill, to rear aspect (700mm W x 750mm H).
- Kitchen floor cupboards with drawers under 900mm High worktops.
- Pine dining table (900mm W x 1,350mm L x 750mm knee H).
- Six pine chairs (470mm seat H).
- Fridge, Freezer, Washing machine, Dish washer, Microwave oven, Toaster and kettle.
- Electric cooker with four rings.
- Emergency lighting



Lounge area

- Fitted carpet flooring.
- Four adjustable ceiling spot-lights controlled by two dimmer switches.
- Night storage heater and convector heater.
- Inglenook fireplace with log burner.
- Sash window, with deep sill, to front aspect, (700mm W x 900mm H) with seat (460mm H)
- French doors to rear aspect (1,300mm W x 1,900mm H). Open outwards onto the patio
- Pair of two-seater settees (450mm seat H).
- Pair of large easy chairs (450mm seat H).
- Nest of three occasional tables.
- Wooden box, storing games inside (460mm W x 900mm L x 390mm H).
- T.V. with Digital-box, DVD player



Cloak room

- 600mm wide doorway, two, 200mm steps down from hall.
- Vinyl flooring.
- Ceiling light.
- Electric heated towel rail.
- One sash window (frosted), with deep sill, to rear aspect (500mm W x 760mm H).
- Mirror with light and shaver power point.
- W.C. (440mm seat H).
- Wash basin (860mm H).



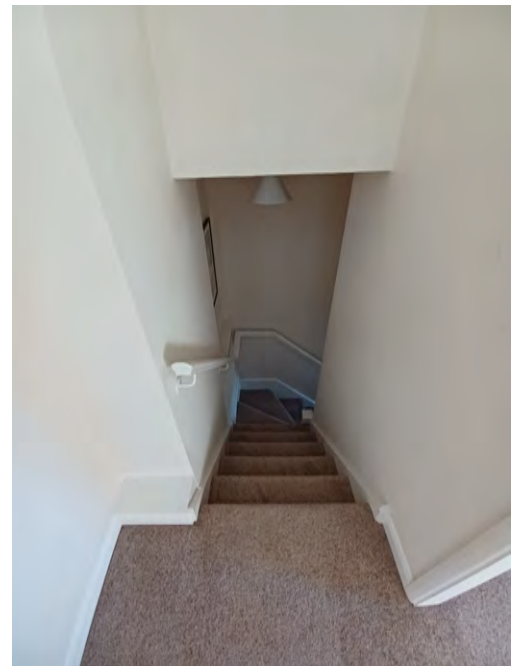
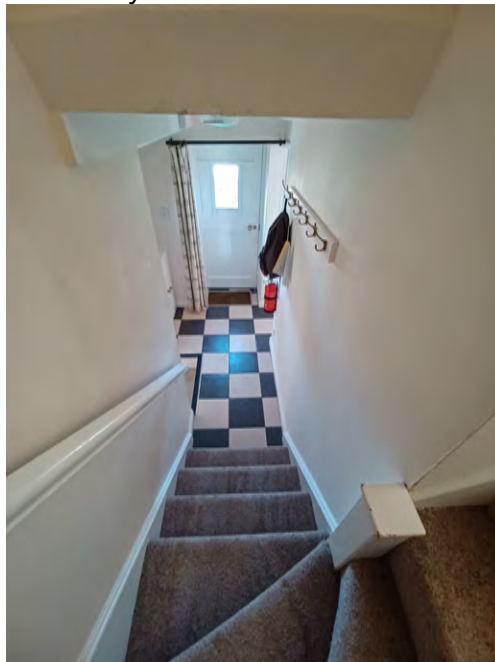
Twin Bedroom (ground floor)

- 740mm wide doorway, two, 200mm steps down from hall.
- Fitted carpet flooring.
- Ceiling light. One table lamp.
- Night storage heater, Convector heater and a de-humidifier.
- Sash window, with deep sill, to front aspect (650mm W x 760mm H).
- Sash window, with deep sill, to side aspect (600mm W x 950mm H).
- Sash window, with deep sill, to rear aspect (550mm W x 600mm H).
- Built-in wardrobe (800mm W), tubular heater.
- Pine "kitchen" chair (470mm seat H).
- Chest of four drawers (800mm W x 420mm D x 700mm H).
- Bedside cabinet (540mm H)
- Two single beds (each 1,000mm W x 2,000mm L x 600mm H)



Stairway to first floor

- Stairway with 12 steps (200mm H x 800mm W). Steps 4, 5 and 6 are narrow turning type.
- Handrail to one side (900mm H).
- Fitted carpet flooring.
- Ceiling light on 2-way switch.



Landing/sitting room

- Large, "L" shaped area with fitted carpet flooring.
- Ceiling light.
- Sash window to front aspect (650mm W x 1,000mm H).
- Sash window to rear aspect (650mm W x 700mm H).
- Wooden chair (450mm seat H).
- Wooden writing desk (1,050mm W x 500mm D x 750mm H).
- Occasional table (920mm W x 420mm D x 460mm H).
- Two-seater settee (450mm seat H).



Twin Bedroom

- 750mm wide doorway
- Ceiling gently slopes down to 1,550mm high at front and rear walls.
- Fitted carpet flooring.
- Ceiling light. Pair of table lamps.
- Night storage heater, Convector heater and a de-humidifier.
- Two windows to front aspect (each 840mm W x 5000mm H).
- Sash window, with deep sill, to side aspect (600mm W x 1,000mm H).
- Four recessed, single fixed pane, windows to rear aspect (170mm W x 650mm H) 300mm from floor.
- 1 wooden chair (470mm seat H).
- Built-in wardrobe and shelving unit (1,050mm W).
- Pair of bedside cabinets (420mm W x 470mm D x 540mm H).
- Chest of four drawers (800mm W x 420mm D x 700mm H).



Bathroom

- 680mm wide doorway.
- Vinyl flooring.
- Ceiling light. Light/shaver socket above mirror. Electric towel rail. Electric wall heater.
- Sash window to front aspect (700mm W x 700mm H).
- W.C. (430mm seat H).
- Wash basin (800mm H).
- Bath (700mm W x 1,680mm L x 540mm H).
- Electric shower over bath with shower curtain.



Double Bedroom

- 740mm wide doorway.
- Fitted carpet flooring.
- Ceiling light. Pair of table lamps.
- Night storage heater, Convector heater and a de-humidifier.
- Sash window to front aspect (700mm W x 1,000mm H).
- Sash window to rear aspect (600mm W x 700mm H).
- Built-in wardrobe (1,100mm W).
- Pine "kitchen" chair (470mm seat H).
- Large built-in shelf over storage cupboard (1,160mm W x 680mm D x 1,200mm H)
- Pair of bedside cabinets (each 360mm W x 280mm D X 600 H)
- Double bed (2,000mm W x 2,000mm L x 600mm H)



Garden

Grassed lawn to front with a level, granite chipped path from parking area to front door and around cottage to patio area in the rear garden. Garden furniture is available with a low Cornish hedge to perimeter of property. Rear garden separated from front with Picket fence and a gate 950mm wide. Rear grassed lawn is raised with a gentle slope by the side gate but steep elsewhere. Rotary dryer on rear lawn.





Additional Information

- Assistance dogs are welcome at all our cottages
- In the event of a fire, it is the responsibility of the guests to evacuate themselves. Vibrating fire/smoke detectors are available if requested at time of booking. Please contact us if you have any other specific access requirements in this respect.

Facilities at all cottages

In addition to the standard equipment and facilities, each cottage is equipped with the following:

- Cordless kettle
- Chair with armrests in dining room and living room.
- Good reading light
- Large handle vegetable peeler
- Easy tin opener
- Non-slip mat for bath/shower
- Non-slip place mat
- Easy jar opener
- Information in alternative formats (on request)

We aim to provide these items in all cottages but please check when booking as to their availability and to check if new items have been added to the list.



Specialist equipment

Other specialist equipment such as wheelchairs, bath seats, toilet frames etc may be available for loan or purchase from the local Red Cross loan centre. Please check this out before booking the Cottage and contact us if you require further information.

<http://www.redcross.org.uk/standard.asp?id=89425>

Future Plans to improve Accessibility to National Trust Holiday Cottages

- We are currently in the process of writing accessibility guides for all our holiday cottages and improving access over time for all our guests. All feedback is very helpful in informing us of ways in which we can improve access to all our cottages. We welcome any comments or ideas from you about access at this cottage and thank you for taking the time to do this. Please do this in the most convenient way for you. See contact details below or information on website.

About the Accessibility Guide

- This Accessibility Guide is intended to provide key information about the cottage that may be particularly relevant to guests with disabilities. Please contact us prior to booking if you would like information that is more specific and we will be happy to oblige.

Email: cottages@nationaltrust.org.uk

Phone: 0344 8002070

Access for All at the National Trust

- The Access for All office works to improve access at all National Trust cottages and properties. The office welcomes comments and ideas on improving access.

Phone: 01793 818531

Email: accessforall@nationaltrust.org.uk

October 2022