

Saltram Access Statement

Merafield Road, Plympton, Plymouth, PL7 1UH

T: 01752 333500

E: Saltram@nationaltrust.org.uk

Points to note:

1. Saltram estate has 500 acres of parkland with paths, uneven ground & hills. The garden and other core areas are mostly on level ground with many accessible areas.
2. Mobile phone service across the estate is patchy. In the case of an emergency please call 999. For staff assistance please call 01752 333500.
3. Dogs should be kept on leads in the core areas and non-assistance dogs are not allowed in the House or Garden.
4. We offer free admission to the garden for the essential companion, or carer, of disabled members or visitors. Please note disabled supporters do not need to be members to request a companion's free entry. It is National Trust policy to charge the disabled person. However, some members may request free access for a severely disabled companion, or the disabled person may need more than one companion.
5. A 'Tramper' is available through the Countryside Mobility Scheme, **booking is essential**, please call 01752 333528 or email saltram@nationaltrust.org.uk.

Arrival & Parking Facilities

1. There are brown signs from the A38 if travelling westbound – please take the Marsh Mills exit for Plympton and Saltram is signposted. The postcode for your sat nav is PL7 1SL.

Please note that pedestrian access to the estate is limited; all access points are approximately 0.5 miles from the core areas on uneven hilly paths.

Local buses have stops near to the pedestrian access points and the number 27 cycle route passes through the estate.

2. There are 25 disabled parking spaces. The car park is approximately 50 metres from the Welcome Centre & other core areas.
3. The disabled car park is tarmac. The route to the Welcome Centre is across a cobbled yard. Other parking is a mix of tarmac, gravel & grass.
4. We do not have a transfer vehicle. It is possible to drop visitors approximately 50 metres from the Welcome Centre and core area.



5. We have speed bumps on entry to Saltram estate these are as follows –

Location	Height (cm)	Length (cm)	Width edge to edge of road (cm)
Merafield 1	10.5	420	460
Merafield 2	10.5	440	500
Merafield 3	11	420	510
Merafield 4	5	200	520
Car park 1	9	157	490
Car park 2	9.5	290	400
Car park 3	7	380	440
Overflow 1	3.5	200	380
Stag Lodge 1	3.5	200	380
Stag Lodge 2	3.5	200	370
Stag Lodge 3	3	200	370

WCs

1. There is an accessible toilet in the following locations:

- Portakabin x 1 - door opens outwards (920mm)

2. All accessible toilets are at least 1.5m x 2.2m

3. The toilets in the Portakabin are left hand transfer.

4. There are no Changing Places facilities (WC with adult changing table & hoist).

5. There are baby change facilities in the Portakabin & Chapel (garden) – the weight limit is 30kg.

6. All the toilets use artificial light but not fluorescent bulbs.



Welcome Centre

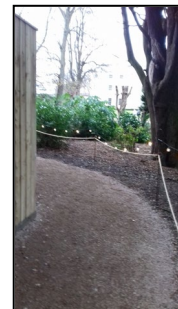
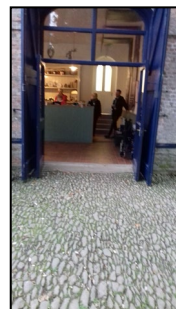
1. The floor in the Welcome Centre is tiled and walls are stone.

2. The entrance is across a cobbled courtyard but is on the level.

3. The entrance door is 2200mm. The door is manual, opening outwards and is usually kept open. Staff/volunteers can assist with opening the door if required.



4. Lighting is by natural & artificial light. We do not use fluorescent bulbs.
5. There is no induction loop.



Catering

1. The Café is 75-100 metres from the car park.
2. The path surface from the car park to the Café is tarmac
3. The access to the Café is all level. Both entrance & exit doors have assisted opening, the doors open inwards and the width is 1650mm.
4. The Café has no soft furnishings and has a stone floor in the serving area.
5. The Café uses a mix of natural & artificial lighting. There are no fluorescent bulbs.
6. The counter height in the Café is 910mm.
7. The till point has an induction loop.
8. There is also a trailer serving hot drinks in the car park.



Retail

1. The Shop is approximately 50 metres from the car park
2. The route from the car park crosses a cobbled yard.
3. The access to the Shop is level.
4. The door to the Shop is manual, opens outwards and is usually kept open, it is 900mm wide. Staff/volunteers can assist with opening the door if required.
5. The Shop has no soft furnishings and has a tile floor.
6. There is a mix of natural & artificial lighting. There are no fluorescent bulbs.
7. The counter height in the shop is 1000mm.
8. The space between displays varies from 600mm to 1500mm in the shop.
9. The till point has an induction loop.



Garden

1. There is a map of the Garden attached.
2. Most of the garden paths are accessible and the garden is mostly level. The paths behind the Orangery leading to the fernery and Temple of Jupiter are sloping.
3. Paths are mostly gravel. Paths that are grass or bark are marked on the map, they are not suitable for wheelchairs or mobility scooters except for 'off road' Trumper scooters.
4. There are a number of routes around the Garden.
 - There are 3 steps into the Orangery
 - There are 17 steps with a handrail to the 'cave' under the castle folly
 - There are 25 steps to Temple of Jupiter but there is a longer alternative route
 - There are 45 steps into & out of the area below East Lawn
5. There are some areas which are private and these are gated to prevent access.
6. There are a number of seats throughout the garden.
7. In front of the House is a traditional feature known as a Ha-Ha. It is a steep drop and is not immediately visible from a distance. Please do not proceed backwards when photographing the House.
8. There is a World War II vehicle inspection pit.
9. There are some exposed tree roots on the path linking the lime avenue with the Orangery.
10. Assistance dogs only are permitted in the garden.

Park

1. There is a map of the Park attached.
2. There is a tarmac path leading to Point Beach, Stag Lodge and Snowdrop forest school.



Other paths are mostly gravel, soil or grass. They have uneven ground and feature some steep inclines. They are not suitable for wheelchairs or mobility scooters. 'Off road' Trampler scooters can access a number of the paths and signposts indicate routes which are not accessible.

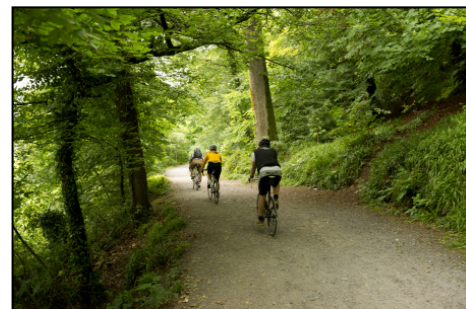
3. There are some steps, which are marked on the map and they do not have handrails.
4. The boundary walk gates open one way only. All other gates are 1200mm wide and open both ways.
5. There are several interpretation panels located at key points.
6. There are a number of seats throughout the park
7. There are a number of small ponds along Point Drive on route to Point Beach.

Please be aware that along the Riverside Walk there are steep drops to the river estuary, children should be watched carefully.

Point beach is tidal, swimming should not be allowed.

The Salt Marsh is tidal and floods twice daily, a fast current exists at the outflow sluice.

8. You should be advised that cattle graze in some areas and electric fencing is used on the estate.
9. Dogs are permitted in the park but we request them to be on a lead in the car park area. Dog mess bins are provided.
10. The site is cleaned regularly but please note that rubbish or dog mess is sometimes discarded and you should be advised to take care.
11. All routes are used by vehicles and cyclists.



Map

Maps of the Park & Garden are attached and available from our Welcome Centre

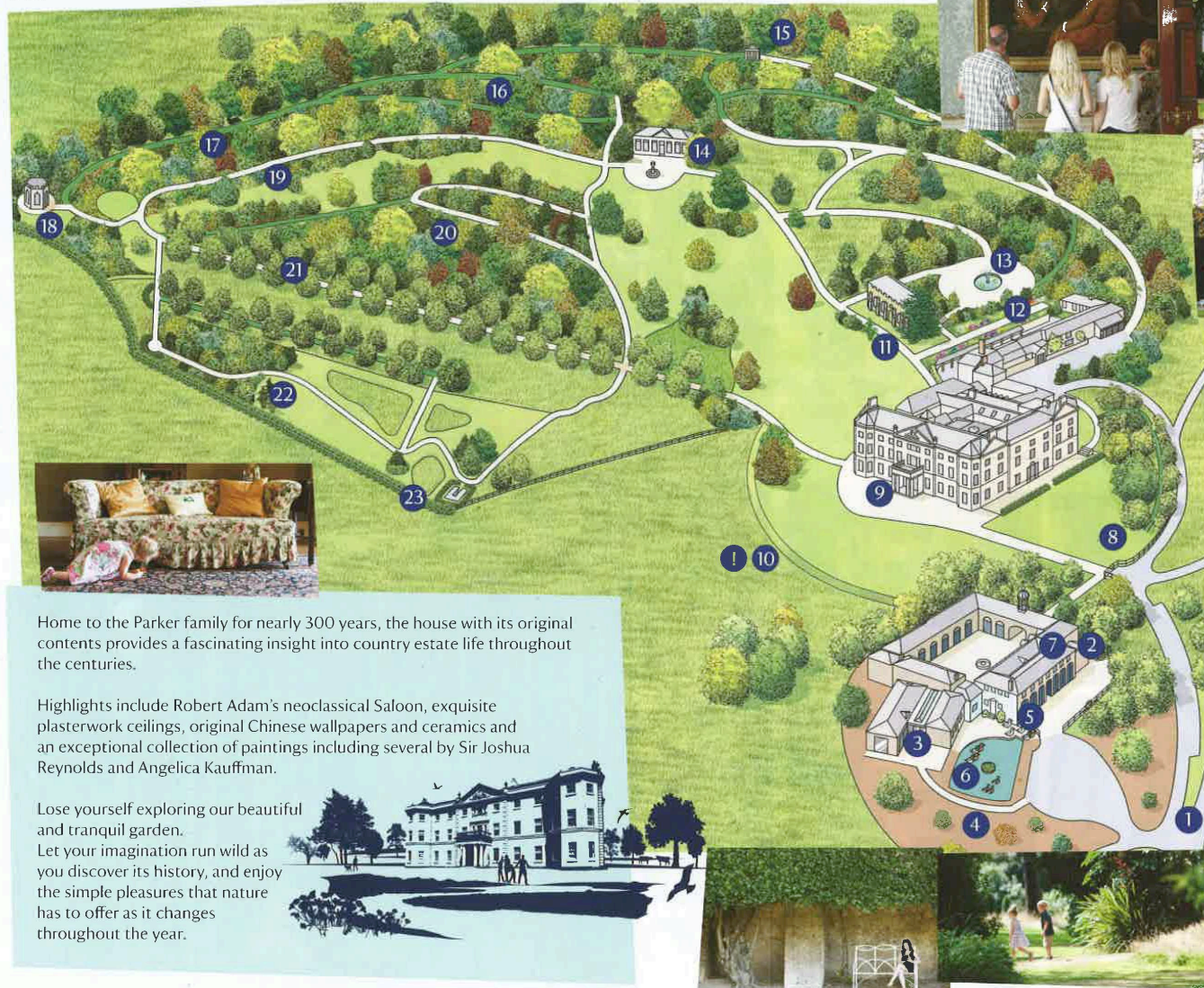
Saltram Estate Map



Photography: NTPL/
© National Trust 2011. The National Trust is an independent registered charity, number 205840



There's so much to discover



Home to the Parker family for nearly 300 years, the house with its original contents provides a fascinating insight into country estate life throughout the centuries.

Highlights include Robert Adam's neoclassical Saloon, exquisite plasterwork ceilings, original Chinese wallpapers and ceramics and an exceptional collection of paintings including several by Sir Joshua Reynolds and Angelica Kauffman.

Lose yourself exploring our beautiful and tranquil garden. Let your imagination run wild as you discover its history, and enjoy the simple pleasures that nature has to offer as it changes throughout the year.



Exploring

- 1 Car park
- 2 Toilets
- 3 Park Café
- 4 Play area
- 5 Shop
- 6 Duck pond
- 7 Welcome Centre
- 8 Tree walk
- 9 House entrance
- 10 Ha-ha
- 11 The Chapel Tea-room & Toilets
- 12 Summer border
- 13 The orange grove
- 14 The Orangery
- 15 Temple of Jupiter
- 16 The fernery
- 17 Melancholy walk
- 18 The castle folly
- 19 North path
- 20 Middle glade
- 21 Lime avenue
- 22 Serpentine walk
- 23 WWII inspection pit

Warning! For your own safety and enjoyment please be aware of the following: The ha-ha in the lawn in front of the house entrance is a traditional feature of the garden. It is a steep drop and is not immediately visible from a distance, please take care.