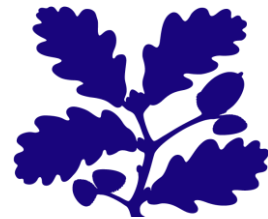


# Accessibility Guide for Woolacombe

northdevon@nationaltrust.org.uk, 01271 870555  
(Ranger Office) or 01271 870553 (Tourist Information  
Centre) <https://www.nationaltrust.org.uk/woolacombe>



**Contact for accessibility enquiries: Ranger Office or Tourist Information Centre (TIC)**



## Welcome

The popular 2.5 miles of unbroken sand that make up Woolacombe Beach are popular with swimmers, surfers and holiday makers alike. Behind the beach are Woolacombe Dunes, a great spot for peaceful walks and to observe the array of wildlife that live here. There are many accessible routes in the area though for those looking for more of a challenge you can head up the steep Woolacombe Down to enjoy great views of the surrounding area and stunning sun sets.

## At a Glance



### Level Access

- There is level access from a car park to:
  - Woolacombe Tourist Information Centre (TIC)
  - Public Toilets in Centre of Woolacombe by bus stop (operated by North Devon Council) - open 24/7
  - Toilets by walkway to beach (operated by Parkin Estates) - closed during winter months

- Toilets near Esplanade Car Park (operated by Parkin Estates) - closed during winter months
- Woolacombe Dunes and Beach

### **Hearing**

- Some staff have disability awareness training.

### **General**

- There is at least one public toilet for disabled visitors.
- Some staff have disability awareness training.

### **Getting here**

National Trust (c/o Tourist Information)  
The Esplanade  
Woolacombe  
Devon  
EX34 7DL

### **Travel by public transport**

- You can get to Woolacombe by bus and train.
- The bus stop is in the Centre of Woolacombe next to the public toilets.
- Bus routes with Filers are: 303 from Barnstaple and the 31 from Ilfracombe (via Morteohoe).
- The nearest train station is Barnstaple. The train station is 12 miles / 19.3 km from Woolacombe.
- Barnstaple railway station is reached via the regular Great Western rail link from Exeter.
- You can get a taxi with Beeline Taxis in Barnstaple by calling 01271 322117. The taxi company has a wheelchair accessible vehicle.

### **Parking**

- There are several car parks (not managed by National Trust). There are accessible parking spaces. Parking is not usually free.
- The closest car park to the dunes is at Marine Drive. There is normally a charge for parking which depends on arrival time. Parking is free from November to mid-March. Car park is open all year but closed at night.
- Parking in Woolacombe is closer to level access to the beach. There are charges for parking. Blue Badge Holders may park for free in kerb side parking areas.
- Kerb side parking payment machines take silver coins, less 5p.



Marine Drive Car Park



Marine Drive



Entrance to Esplanade Car Park



Cash payment machine

## Arrival

### Getting around inside



#### **Ticket/ information desk**

### Woolacombe Tourist Information Centre (TIC)

- There is level access to the rear entrance. The route is 1200mm wide, or more.
- The door is 860mm wide, or more.
- The front entrance is accessed by 7 steps.
- The Tourism Information Centre works in partnership with the National Trust and can join you as a National Trust member.
- The Office manages the hire of the tramper as part of the Countryside Mobility scheme.
- Opening days and times vary according to high/low season and holidays.
- RADAR keys to access the disabled toilets are available.
- The Office holds a list of local accessible accommodation.





Tourist Information Centre (TIC)



View of TIC



Front entrance with steps



Rear entrance - level access



Inside Information Board outside

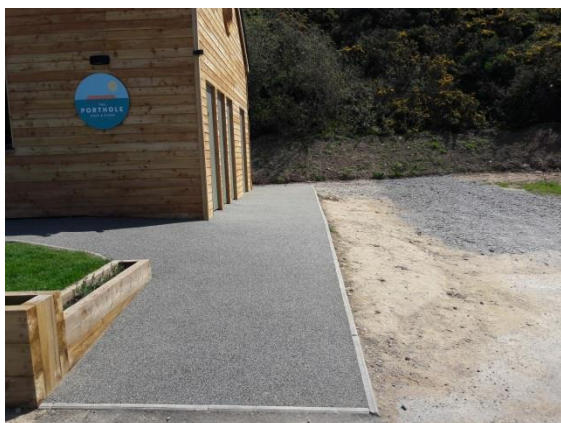


## Public toilet

**Marine Drive Car Park (operated by cafe) – toilet may be closed during winter months – Adjacent to Porthole café.**

- You need a RADAR key to open the accessible toilet.
- From a parking space to the toilet, there is level access. The toilet door is 860mm wide.
- The direction of transfer is to the left.
- There is 1000mm at the side of the toilet. There is 1000mm in front of the toilet. The toilet seat is 480mm high.

- There is a basin with a single lever tap at height of 760mm.



Entrance ramp to toilets



Inside view

### **Public toilet**

#### **Public Toilets in Centre of Woolacombe by bus stop (operated by North Devon Council) - open 24/7**

- You need a RADAR key to open the public toilet.
- There is level access. The route is 1300mm wide, or more.
- The toilet door is 970mm wide.
- The direction of transfer is to the right.
- There is 1200mm at the side of the toilet. There is 840mm in front of the toilet. The toilet seat is 460mm high. The toilet has handrails.
- Includes: baby changing table, alarm pull cord, sensor operated wall basin. Low light level.



External view



Inside view

### **Public toilet**

#### **Toilets by walkway to beach (operated by Parkin Estates) - closed during winter months**

- You need a RADAR key to open the toilet.
- There is level access. The route is 1280mm wide, or more.
- The toilet door is 890mm wide.
- The direction of transfer is to the right.

- There is 750mm at the side of the toilet. There is 770mm in front of the toilet. The toilet seat is 460mm high. The toilet has handrails.
- Sink with single lever tap.
- Natural light via skylight during daytime. Internal light operates on a timer.



Entrance to accessible toilet



View inside

## Public toilet

### **Toilets near Esplanade car park and beach cafe (operated by Parkin Estates) – toilet closed during winter months**

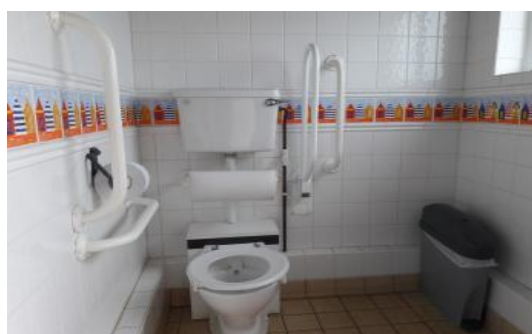
- You need a RADAR key to open the toilet.
- There is level access. The route is 1200mm wide, or more.
- The toilet door is 860mm wide.
- The direction of transfer is to the right.
- There is 880mm at the side of the toilet. There is 860mm in front of the toilet. The toilet seat is 460mm high. The toilet has handrails.
- Sink with single push top tap.



Access ramp to toilets



Entrance



Internal view



## Place to eat and drink

### Porthole Café (operated by a National Trust tenant)

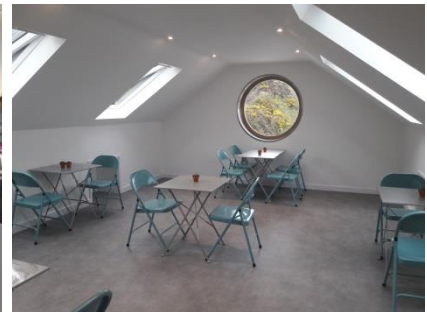
- There is level access via a ramp way to the entrance and to order at the counter.
- The café serves hot and cold drinks and snacks.
- To get to a table upstairs, there are 13 stairs, each of 180mm.
- There are tables available outside.
- If you need table service, staff can help you.
- The route through the upstairs dining area is 800mm wide, or more.
- There is no background music.
- We can cater for sugar free (diabetic), vegetarian, gluten free (celiacs), lactose free (dairy free), nut free and vegan diets.



Entrance way



The counter



Upstairs seating

## Getting around outside

### Designated Walking Trail

#### Woolacombe Dunes

- The trails are sloped in places and have steps. The trails have seats.
- There are many paths along the dunes and down to Woolacombe Beach.
- There are maps and information boards.



Information Board



Route across the dunes



Route across the dune



Route across the dunes



Route down to beach from Marine Drive car park



## Beach

- The beach level access route is 300 metres from the nearest car park.
- There are access routes with steps. There are handrails.
- Life guards are on duty – Over Easter holidays and then weekends until the service starts fully at the start of May through to the end of September. They also operate for the weekends of October. There is no service from November through to Easter.
- The lifeguards can provide First Aid.



Steps down to the beach





Entrance area to beach



Level access route to beach



Access may be possible to the waters edge

## **Picnic Area**

### **Woolacombe Dunes and Beach**

- There is level access to suitable areas for a picnic.
- There are many areas to picnic along the dunes.
- You can bring your own food for a picnic.

## **Customer care support**

### **Accessibility equipment**

- A Trampler is available as part of the Countryside Mobility scheme from the Tourist Information Centre. It is best to book in advance. Telephone 01271 870553.
- There are two marked trampler routes - across the beach and across the dunes.
- See <http://www.countrysidemobility.org/> for more details about the scheme.
- You can hire a beach accessible wheelchair at the Tourist Information Centre.
- There are dog waste bins around the area.



Tramper on beach



Beach wheelchair

- You can hire mobility equipment from Branton Mobility see: <https://www.brantonmobility.co.uk/> or by calling 01271 814577.

### Customer care support

- Some staff have disability awareness training.

---

Guide last updated: May 2019