



National  
Trust

## Commemorative Giving at Mr Straw's House 2024/25

Last updated: June 2023



# What is Commemorative Giving?

**Commemorative giving is a really important way for people to connect with the National Trust, by donating to celebrate and remember.**

People give commemoratively for many reasons. It may be personal, it may be in response to a social need or may reflect a cultural influence:

- To create symbolic immortality for someone
- To preserve the bonds between loved ones
- To connect with a loved one at a special place
- To celebrate a particular event or date

We are committed to restoring and enhancing Mr Straw's House through our care and continue to make improvements to our visitor facilities - you can be part of that legacy.

Your donation will contribute to key priorities helping us to upgrade visitor facilities, invest in collections care, research, and building restoration. Recent contributions have helped restore our Glasshouse, Florence's treasured piano and care for one of the largest National Trust collections.







## Mr Straw's House: An Ordinary House, An Extraordinary

Hidden away on a quiet suburban street, 7 Blyth Grove is unique. Presented as it was left in 1990 by William Straw Jr, this modest Edwardian semi-detached home is little changed since the Straw family fashionably redecorated and took up residence in 1923.

William and his brother Walter lived thriftily and installed few modern conveniences following the deaths of their parents in the 1930s. and ensured a huge collection of everyday objects and personal papers – apparently with nothing discarded and everything preserved – survived alongside the occasional indulgence; the 1960's linoleum for the bathroom and the gas cooker c.1950 reflect small nods to the changing times and the parcels of papers, boxes of books and piles of newspapers remain as an involuntary testament to the values of thrift and frugality, of make do and mend and as a social history record within Endcliffe Villa.

This pack contains information about the opportunities from which you can choose to make your gift to the House. The history and beauty of Mr Straw's House makes it the perfect place to celebrate a momentous occasion or remember loved ones whilst supporting the National Trust to care for the property and collection for future generations to enjoy.



# Commemorative Items

There are many ways you can help support us care for Mr Straw's House, whether it is contributing to our collections care, helping us maintaining the outdoors spaces and gardens or to fund some of the structural maintenance work. Your gift will make the difference in helping us upkeep this 'extraordinary ordinary home' for generations to come.

## **SPONSOR A GARDEN TABLE & CHAIR SET - minimum donation of £500**

Gardens Sets at Mr Straw's House are a brilliant way to celebrate occasions or remember loved ones in a beautiful setting. We do not permit plaques or memorials but offer peaceful, unique locations for private reflection and special moments, for you and for everyone.

## **SPONSOR GARDEN STORAGE - minimum donation of £500 - £800**

The gardens and outdoors were an important part of the Straw's life. All gardens require an engine room and storage and after recently restoring our glasshouse, we are now seeking to replace the dilapidated storage sheds where our hard working team store our garden tools and garden seating.



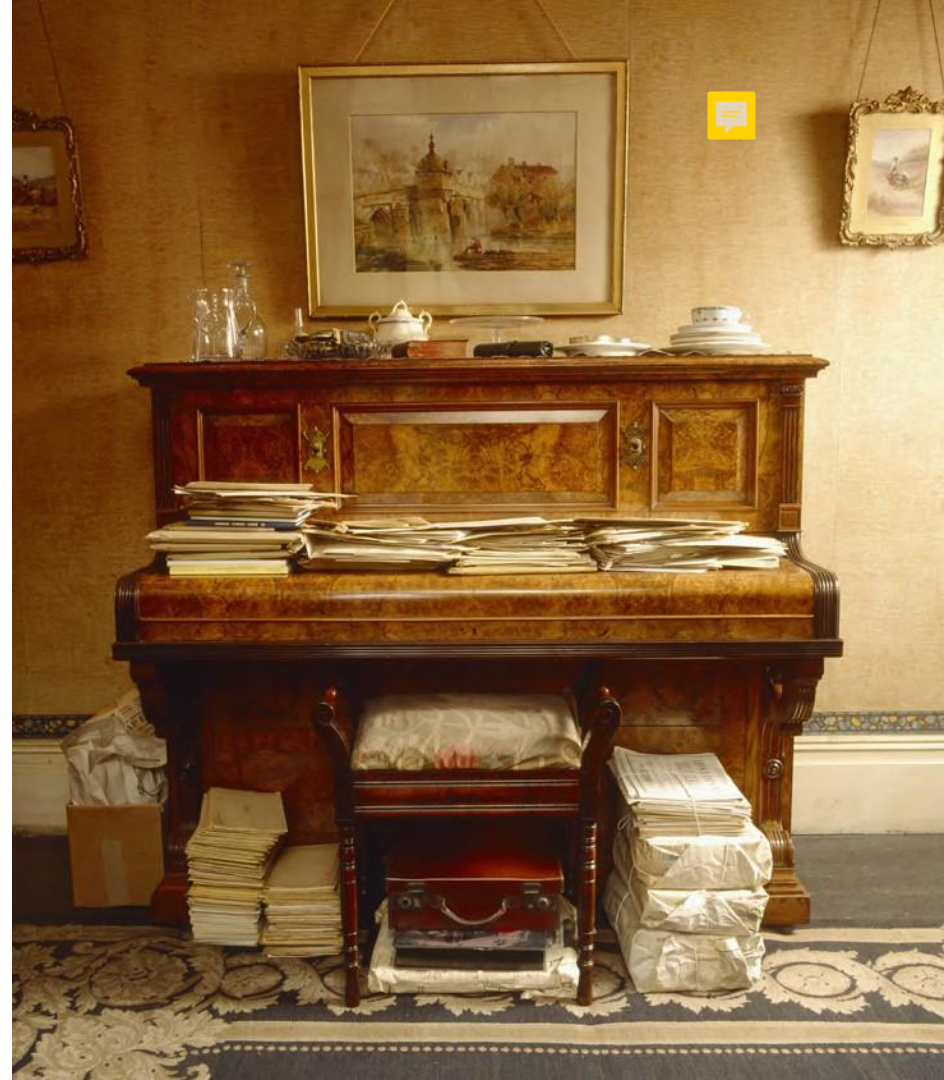
# Commemorative Items

**BE A HIDDEN TREASURES HERO & SPONSOR A ROOM –  
minimum donation of £10**

Mr Straw's House is home to one of the largest National Trust owned collections. The house contains a lifetime of memories with each room reflecting the families individual and unique characters. Your donation will enable vital conservation work required to care for each of these spaces, including the main Front Dining Room, where the brothers spent their leisure time, the Parents' Bedroom where William Jr continued to care for his parent's belongings or the Lumber Room full of the family's treasures and keepsakes.

**SPONSOR THE ANNUAL PIANO TUNING – minimum  
donation of £50**

The two pianos in the collection hold important memories and stories of the family. A Walnut upright by Rogers & Sons in Florence's Back Parlour was bequeathed to William Jr from his landlady in London. The second, an upright piano made of rosewood and probably the one Florence played. Your donation will help keep the pianos in working order and enable them to be played and enjoyed by all on special occasions.





# Collections Care, Buildings & Structures

## **EXTERNAL BUILDING DECORATION - minimum donation of £50**

Our historic buildings need regular repair and updating; replacing roofs, windows and doors. Help us to maintain the remaining ducal buildings for our future generations.

# What you need to know:

## Terms & Conditions

1. When making a donation towards the cost of a specific item, such as a bench or shed, this is for sponsorship only and not ownership of the item. The item will become the property of Mr Straw's House and will remain so for the life of the item.
2. Charges will be based on current rates at the time.
3. We will take reasonable care of all legacy items, such as a bench or a shed during their lifetime, but we cannot replace them in the event of fire, theft or accidental damage.
4. All requests for items will be treated on a strictly first come first served basis and are subject to a space being available on site.
5. Mr Straw's House shall not be held accountable for any future works or planning alterations/changes to the site(s) or the surrounding areas.
6. All monies are to be paid in full when the final agreement is completed and includes purchase, and installation.

7. The Donor will receive an Official Receipt for the monies paid.

8. Mr Straw's House will hold your personal data for 15 years in regards to any donation and will endeavour to contact you should we need to in the event of changes to the area. After 15 years no such contact will be made. It is the responsibility of the donor to contact Mr Straw's House with any change of address, otherwise the last known address will be used. If this proves to be incorrect we are not duty bound to pursue this matter further.

## 9. Privacy Policy

The information you provide will be stored securely by the National Trust and used to process your donation. Your privacy is important to us, so we'll keep your details secure for as long as necessary for this purpose, and they will not be used for marketing communications that you haven't agreed to receive.

For more information about how we look after your personal data please see our Privacy Policy at [www.nationaltrust.org.uk/features/privacy-policy](http://www.nationaltrust.org.uk/features/privacy-policy).

"We" and "us" means the National Trust, charity number 205846, and National Trust (Enterprises) Limited.



# Online Donations

Online donations are becoming more and more popular for commemorative donors.

You can donate in memory or in celebration to Mr Straw's House via the 'Donate' button on the National Trust website, capturing information such as the special occasion and commemorative names. Individual donations can only be made through this page. For collections and tribute funds, please see below.

## Tribute Funds

You may wish to set up a tribute fund for funeral collections, wedding gifts or any in memory or in celebration fundraising event or occasion.

We use the JustGiving platform and have specific links we can share with you to create your own fundraising page to celebrate a birthday, wedding, personal challenge, fun run or another occasion.

Please contact [giving@nationaltrust.org.uk](mailto:giving@nationaltrust.org.uk) for more details on how to set up a Just Giving Tribute Fund specifically for Mr Straw's House project or appeal. You must clearly state that you want your donation to go to a specific property or project during the set up process.







## Gifts in Wills

A gift in a will, also known as a legacy, is a percentage of an estate, an amount of money, or a specific item or property left in someone's will. When someone leaves a gift in their will to us, it's often the largest gift they can or will give. It's also a way for people to ensure their values live on, and it's something our supporters care about very much.

Gifts in wills are vital in protecting all our places, and supporters can even choose where their gift goes. These gifts are used right at the heart of our work; so any gift, no matter the size, makes a real difference.

Many people choose to leave a gift to go where it's most urgently needed: an "unrestricted" gift. However, supporters can choose where their gift goes, if they wish. That could be a property or place special to them, or an area they really love, like the coastline or the countryside.

You can find more information about gifts in wills by getting in touch with the Gifts in Wills team at [legacies@nationaltrust.org.uk](mailto:legacies@nationaltrust.org.uk)

[www.nationaltrust.org.uk/legacies](http://www.nationaltrust.org.uk/legacies)



# Get in touch

Mr Straw's House holds precious memories for many of our supporters; whether this is walking through the history of Endcliffe Villa, enjoying the sunshine in the family garden or taking a minute surrounded by nostalgic items that reminds us of a loved one. We love that it is these moments that keep Mr Straw's House close to your heart. Therefore, your commemorative gift and support is just as important to us so please don't hesitate to contact us.

## NEXT STEPS.....

**Step 1:** Select a project you wish to support

**Step 2:** Contact us to arrange a visit and discuss your gift in detail

**Step 3:** We will arrange for the gift to be accepted by the Property

**Step 4:** You can choose to add an entry into the Commemorative Book - if you wish to do this, we can agree wording with you

It is with regret that we do not allow ashes to be scattered on the property and we are also unable to place a commemorative plaque or inscriptions on sponsored items.


For more information about commemorative giving, please contact our Business Services team at [clumberpark@nationaltrust.org.uk](mailto:clumberpark@nationaltrust.org.uk)



High-class Family Grocer  
and Provision Dealer

*W. Straw*

Market Place  
**WORKSOP**  
Garden Seeds—Flower Seeds

W. Straw,   
Family Grocer,  
Market Place,

WORKSOP,

189



*M*