

LONGSHAW ACCESS STATEMENT

Longshaw Estate, near Fox House, Sheffield S11 7TZ.

Tel: 01433 631757 - Email: peakdistrict@nationaltrust.org.uk

Introduction

Longshaw Estate is an area of moorland, woodland and farmland located within the Peak District National Park, Derbyshire, England. Longshaw Estate with Longshaw Lodge was once the Duke of Rutland's shooting estate.

Longshaw has been owned by the National Trust since 1931, after being first bought by the people of Sheffield in 1928. It is part of the larger National Trust Peak District Estate and is run along with the [High Peak Estate](#) and [White Peak Estate](#). At Longshaw, there is a Cafe, Welcome Building, secondhand bookshop, and a learning facility called the Moorland Discovery Centre (a joint venture between National Trust and the Peak National Park). The Estate is open 365 days a year. [Longshaw Lodge](#) is private accommodation and not open to the public.

General Information for Visitors with Additional Needs

- Mobile phone reception is variable across the property. Please contact the Estate Office on 01433 631757 for advice.
- Assistance dogs are very welcome, and Longshaw has a dog friendly policy to all well controlled dogs. Please be aware that livestock will be grazing from March to October across the estate, ground nesting birds will be nesting, and there are adders in some areas, and so all dogs must be on short 2m leads.
- There are water bowls outside the Welcome Building and Café. Dog waste bags are not provided but there are bins in Woodcroft car park and outside the Café. Dogs are permitted inside the Café (currently on a trial basis). Assistance dogs will always be welcome in the Café.
- The estate is large with some well-defined paths and 3 way-marked routes from 2.7 to 4.5 km in length. Not all routes are accessible by those with limited mobility or wheelchairs/pushchairs. There is a map available to show these routes on the side of the Welcome Building, please ask the staff and volunteers for more details. Surfaces may erode in wet weather and we do our best try to maintain key routes throughout the year.
- Breastfeeding is welcomed in all areas of our property. If you require a quiet space, please ask a member of the team who can try to facilitate this for you.
- We welcome visitors with autism. If you, or somebody in your party are on the Autism Spectrum and you would like to discuss your visit in advance please contact the Estate Office (01433 631757) or email peakdistrict@nationaltrust.org.uk There is a sensory bag in the Café, including headphones, which can be borrowed by asking a member of the team.
- We encourage visitors with additional needs to participate in our events, trails and activities and are committed to ensuring that everyone can enjoy all that Longshaw has to offer. Please contact us (01433 631757) if you require further information about the accessibility of an event.

- Longshaw and our visitor facilities can be busy, especially on weekends and during school holidays, and some visitors choose to come at quieter times such as midweek during term time.

Arrival & Parking Facilities

- Longshaw is open daily but closing times vary seasonally. Full details of our opening times can be viewed on our website. The site is clearly marked from the nearby A6187 and on local roads with the brown tourist signage.
- 15 designated disabled/young family **extra-wide** spaces are available within the Woodcroft car park. They are approximately 250m from the Café and 60m from the Moorland Discovery Centre.
- The Woodcroft car park has a mixture of chipped tarmac and a hard-bound gritstone surface (a compactable groundcover which binds firmly when compacted) with permeable plastic paving grids under parking bays. Surfacing of the accessible car parking is the same as for the rest of the car park.
- The path from the Woodcroft car park to the Café is gently sloped and can be uneven, especially after heavy rain.
- The car parks at Wooden Pole and Haywood are located further from the hub and are less accessible. There are no designated bays, can be muddy after rain, and the footpath network they are on is not accessible for those in wheelchairs.
- There are parking charges payable in all our car parks, **please see the website for current charges**. Parking is free for National Trust members and blue badge holders.
- Cycle racks are available in front of the Welcome Building and at the side of the Cafe.
- There is coach parking in Woodcroft car park. Spaces are limited and must be pre-booked through the Moorland Discovery Centre (01433 637907).



Accessible parking by the Welcome Building



The sloped path between the welcome building and the cafe

Welcome Building

- A wooden building located at the bottom of Woodcroft car park. It has level access through double doors (which open outwards) with a smooth wooden surface within. Staff and volunteers can assist with opening doors if required.
- The building is well lit with natural and LED lighting. There is a small reception desk 106cm high and there is a clipboard available to write on if needed.
- There is some seating within and outside the Welcome Building, including a picnic bench. There is an induction loop at the counter.



Welcome Building in Woodcroft car park

WCs

- Accessible WCs are available inside the Café, adjacent to the Café courtyard, and at the Moorland Discovery Centre (all with alarms). Accessible WCs are all an appropriate size (at least 1.5m x 2.2m).
- The accessible WC accessed from inside the Café has right transfer, the one adjacent to the courtyard has left hand transfer. The one in the Moorland Discovery Centre right hand transfer.
- Baby changing facilities are available in all accessible WCs.
- Currently we have no adult changing facilities on site.
- All WCs have automatic hand driers and LED lighting.



Accessible toilet in the Café

Café

- The Café has indoor seating for approximately 110 and is about 250 meters from Woodcroft car park, roughly a 5 minute walk.
- The paths to the Café are bound gritstone (a compactable groundcover which binds firmly when compacted) or paving stones.
- The entrance doors are manually operated. The door nearest the servery opens inwards (opening width 85cm). One door to the indoor seating area from the courtyard opens outwards (opening width 100cm). The other opens inwards (85cm opening width). Catering team members can assist if required.
- All entrances have coir matting leading onto hard, washable non-slip flooring and there is sound damping throughout. There is adequate natural and LED lighting throughout.
- The servery height with a tray slide in front is 90 cm. Catering team members are available to assist with service and carrying trays.
- There is an induction loop at both tills in the café.
- Chairs in the Café are upright, and some have armrests. There are 8 baby chairs available.
- Tables are set at least 100cm apart with ample turning spaces for wheelchairs. Please be aware that maneuverability could be restricted on busy days.
- We do our best to cater for any dietary requirement, so please ask. Where possible our food produce is sourced locally. We always offer a least 1 gluten-free and vegan/vegetarian option.
- Menus are available on boards by the servery. Menus are not currently available in large print or Braille.
- Straws and adapted cutlery and crockery are available. Please ask at the counter.



Café servery



Seating inside the Café

Outdoor Seating/Café Coutyard

- There is outdoor seating in front of the Café as well as in a courtyard behind. Some outdoor seating in the courtyard is undercover.
- The courtyard is accessible without going through the Café. The courtyard flooring is a mixture of tarmac and tar & chip. There is adequate natural and LED lighting throughout.
- Seating for approximately 140 on a mixture of chairs (with and without armrests) and picnic tables with benches. There are 9 wheelchair accessible picnic tables.
- The picnic tables in front of the Café are situated on grass.
- The area in front of the Café is covered with flagstones.



Café courtyard



Covered area of courtyard

Kiosk

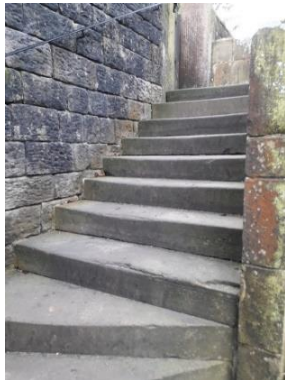
- The kiosk attached to the Café serves hot and cold drinks, snacks and ice-creams. This is open dependent on the weather, visitor numbers and staffing levels.
- The counter is 90 cm high. There is an induction loop at the counter.



Kiosk

The Estate

- A coloured map is available below for the main footpaths. There is a map available to show suggested routes on the side of the Welcome Building, ask the staff and volunteers for more details. You are encouraged to photograph this map to take a copy with you on your walk. There are limited paper maps available for those without a smartphone or who better engage with printed material as opposed to digital.
- Staff/volunteers offer orientation to routes and timings around the estate depending on weather conditions. Advice can be tailored to the needs of visitors so please ask our team at the Welcome Building. The parkland may be closed at short notice in adverse weather conditions.
- Paths are mainly bound gravel tracks. Due to the rural nature of the landscape, some paths have gradients greater than 1:12 and are therefore not accessible to wheelchair users. Our Welcome Team members can give advice on the most accessible routes.
- The woodland path (beginning opposite the Welcome Building) is a short accessible route to the cafe. The gradient at the end of the path is 1:12 and can become uneven and weathered. The orange way-marked route is our most accessible with no stiles or steps. However, this can be weather dependent, especially in Winter.
- Bridges have handrails and there are gates and stiles along most routes. Directional signage is available throughout the estate and is monitored and updated where appropriate.
- There is limited seating available around the parkland, generally on boulders and fallen trees.
- The natural play “Boggart” trail is made of natural materials. Some parts of the trail are off paths with uneven surfaces and can get boggy after heavy rain.
- The Kitchen Garden is accessible by a short path, which is also signposted Estate Office. There is some seating in the garden.



Stone steps to Kitchen Garden



Accessible path to Kitchen Garden



Slope at the end of the woodland path



Typical paths on the estate



Step and accessible route on the woodland path

Map of Waymarked Routes



Moorland Discovery Centre

- The Moorland Discovery Centre (MDC) is a purpose-built learning space.
- Access is by a gently sloped path, which is sometimes difficult for wheelchair access, especially after heavy rain when the path is prone to erosion.
- The entrance door (82cm) opens inwards onto a level wooden floor. The building is well lit with natural and LED lighting.
- There are 3 toilets. One is accessible with right hand transfer. Baby changing facilities are available in the accessible WC. All WCs have hand dryers.
- Furniture can be arranged to accommodate the easy movement of wheelchairs and walking frames. Seating is on benches and upright chairs (1 with armrests).
- Visual resources (including the day's timetable) are provided to support children with additional needs.
- Please contact the staff at the centre (01433 637907) to discuss accessibility requirements, or any adaptations to the educational programmes on offer to schools.



Moorland Discovery Centre



Inside the Moorland Discovery Centre



Accessible toilet in the MDC



Changing facilities in the MDC

Book Den

- A wooden building located at the bottom of Woodcroft car park. It has ramped access through double doors (which open outwards) with a smooth laminate surface within. Staff and volunteers can assist with opening doors if required.
- There is adequate natural and LED lighting throughout.



Outside of the Book Den



Inside of the Book Den

Contact details for more information

T: Longshaw Estate Office - 01433 631757

E: peakdistrict@nationaltrust.org.uk

W: www.nationaltrust.org.uk/longshaw-burbage-and-the-eastern-moors

For information on the Estate Offices as opposed to the visitor facilities, please contact us for more information.

Last updated February 2024