



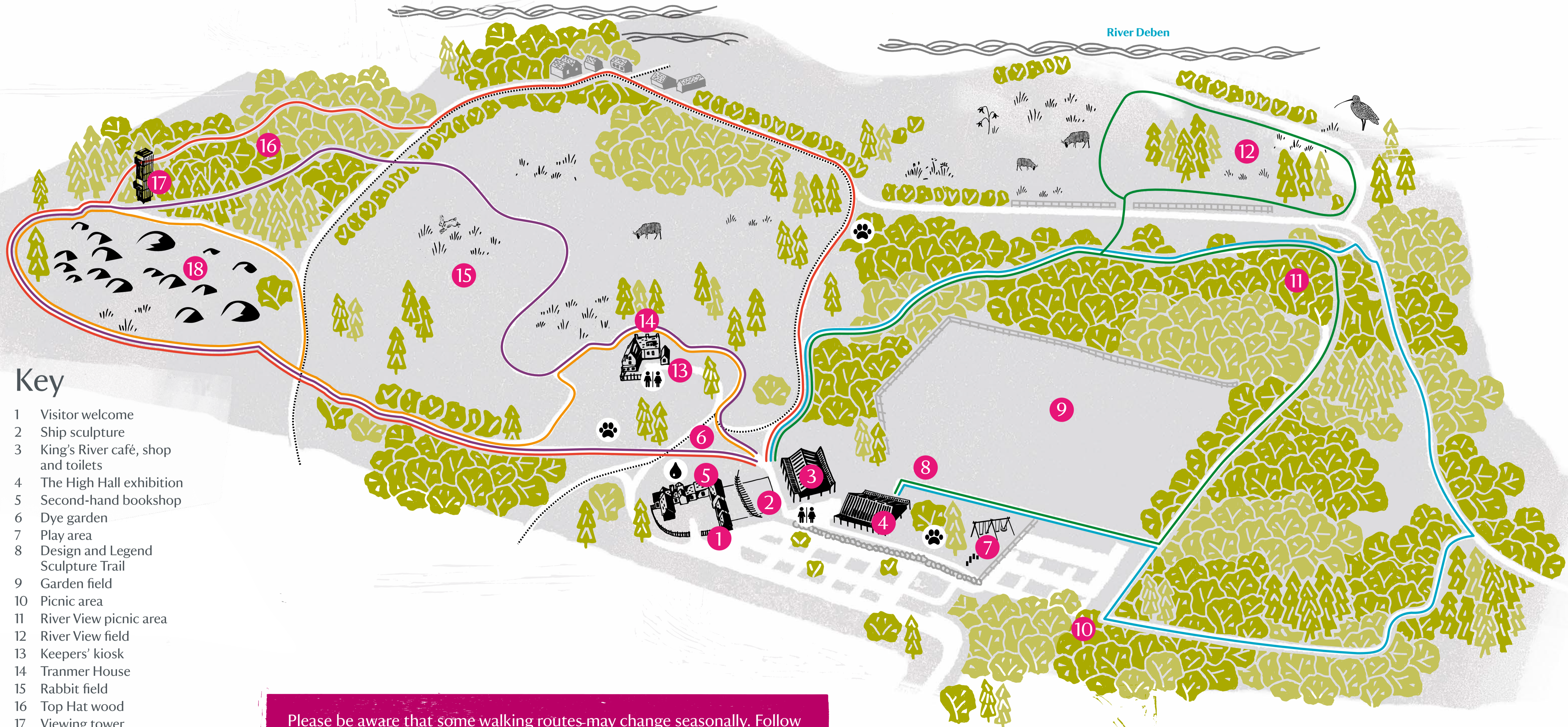
National Trust

# Sutton Hoo site map

## Walks

- **Valley walk (red circular walk)** About 50 minutes. Not suitable for wheelchairs or personal mobility vehicles.
- **Pinewood walk (blue circular walk)** About 50 minutes. Not suitable for wheelchairs or personal mobility vehicles.
- **Accessible route to the Royal Burial Ground (yellow circular walk)** About 20 minutes.

- **River View walk (green circular walk)** About 30 minutes. Not suitable for wheelchairs or personal mobility vehicles.
- **Route to the Royal Burial Ground and viewing tower (purple circular walk)** About 40 minutes. Not suitable for wheelchairs or personal mobility vehicles.
- - **Public Footpath**



## Key

- 1 Visitor welcome
- 2 Ship sculpture
- 3 King's River café, shop and toilets
- 4 The High Hall exhibition
- 5 Second-hand bookshop
- 6 Dye garden
- 7 Play area
- 8 Design and Legend Sculpture Trail
- 9 Garden field
- 10 Picnic area
- 11 River View picnic area
- 12 River View field
- 13 Keepers' kiosk
- 14 Tranmer House
- 15 Rabbit field
- 16 Top Hat wood
- 17 Viewing tower
- 18 The Royal Burial Ground
- Dog waste bins
- Water bottle refill station

Please be aware that some walking routes may change seasonally. Follow the fingerpost signs to ensure you are on the correct route. Dogs should be kept on a lead at all times. Thank you.