

Dinefwr Park and Newton House Access Statement 2024



Newton House,
Dinefwr Park,
Llandeilo,
Carmarthen,
Carmarthenshire,
SA328JP

Newton House and Dinefwr Park Access Statement

Newton House is a 17th century mansion encased in a 19th century Gothic façade, surrounded by 800-acres of parkland, parts of which have been designated as a National Nature Reserve and 18th century landscape Deer Park. Newton House gives visitors an atmospheric experience in the dressed rooms of the basement and ground floor. Whilst the first floor is home to exhibitions celebrating Dinefwr rich and deep past. Dinefwr Park is located on the edge of the town of Llandeilo, Carmarthenshire. There is stepped access to the basement and first floor of Newton house, both staircases have wide, shallow steps and handrails are available.

A magical land of power and influence for more than 2,000 years, Dinefwr is an iconic place in the history of Wales. Two forts are evidence of a dominant Roman presence. The powerful Lord Rhys held court at Dinefwr and influenced decisions in Wales.

Dinefwr Castle is owned by the Wildlife Trust and managed by Cadw.

Contact Details

Newton House,
Dinefwr,
Llandeilo,
Carmarthenshire,
SA19 6RT
T: 01558 825910
E: dinefwr@nationaltrust.org.uk

Points to note

The mobile phone reception across most of the site is reasonable, although very poor in the house. There is an emergency landline located in the outer hall, placed in the bay window (there is no external dial code necessary)

- The property was not built on level ground; the route from the Visitor Car Park to Newton House is via a tarmac driveway which is at a slight gradient.
- There are several estate walks that are useable by people in wheelchairs, although the paths can be rough and muddy. There is a dedicated wheelchair/buggy friendly route around the Board Walk.
- There are also two Blue badge car parking spaces near the entrance to the Board Walk.
(Appendix A)

- On the north-west side of the house, the garden has a fountain, and a Ha-ha with a 2-metre drop, which is not fenced. There are steps from ground level to the fountain and to the upper tier of the garden.
- Dogs are allowed at Dinefwr with the following exemptions: the Deer Park and the Board Walk, As always assistance dogs are welcome everywhere.
- There are multiple water bowls placed around the Visitor Car Park and Newton House Frontage
- There are dog-waste bins in the main car park, on the North Drive near Penparc, at the main entrance to the park, on the North Drive at the deer Park entrance, and on the way to the Castle at the bottom of Castle field.
- Light levels in the house are kept low to protect the portrait collection.
- There are no power assisted doors on the estate.

Arrival & Parking Facilities

- Dinefwr is located on the outskirts of the town of Llandeilo. The property is sign posted off the A483, and from the A40 from Carmarthen. The directional signs are the brown Tourist Board signs.
- The main car park is south west of the house and is accessed after arrival at the Welcome Point.
- The main car park surface is compacted gravel hard standing, with some rutting.
- Should the main car park become full, there is an overflow field car park across a cattle grid, although the track is gravelled, parking is on grass. This is a reasonably flat large area of grass which occasionally has grazing sheep in the field. This car park is located south of the Welcome Point.
- There are 8 designated Blue badge holder parking area to the left of the Visitor Centre. These are hard standing bays.
- There are no transfer vehicles at Dinefwr.
- There is provision for dropping passengers off directly outside Newton House and then the vehicle returning to the car park.
- Areas of the main car park are occasionally cordoned off for event parking.
- The coach drop-off and collection point is outside the Visitor Building, with the coach parking at Home Farm.
- Home Farm parking is a 10-minute walk from the Newton House, the track is gravelled and undulating with two latch gates.

Seating

- There are picnic table and benches available outside the main café at the frontage of Newton House, these have limited wheelchair access.

- There are benches and chairs available in the formal garden to the rear of Newton House, and stone benches under the conservatory and in the Summer House which is on the upper terrace.
- There are benches located at nine strategic points along the Board Walk.
- There are two benches on the main drive leading to the house, spaced out to allow for resting on approaching the main entrance.

WCs

Visitor Building (*Appendix B*)

- There are WC's at the rear of the Visitor Building (VB) in the main car park, including one which has been adapted for use as a disabled WC; This WC has a right-hand transfer accessible WC, there is space to turn a wheelchair. The toilet is a right-hand transfer.
- The room is 1.4m wide*1.7m deep.
- There is no natural light; the WC is lit by a circular D shaped fluorescent light fitting.
- There are no adult changing facilities. The WC has vinyl floors and painted wall surfaces.

Arched Passage (*Appendix C*)

- There is an accessible WC in the arched passageway (on route to the Inner Courtyard). This WC has a right-hand transfer accessible WC with space to turn a wheelchair through.
- The room is 1.5m wide*2.0m deep.
- There is no natural light; the WC is lit by a circular D shaped fluorescent light fitting. There are no adult changing facilities.
- The flooring in the WC is vinyl and painted wall surfaces. There is an emergency pull cord in this toilet

Basement

- There are WC's in the basement of Newton House including a disabled WC. This WC has a left-hand transfer accessible WC with space to turn a wheelchair through.
- The room is 1.6m wide*1.4m deep.
- There is no natural light; the WC is lit by a circular D shaped fluorescent light fitting. There are no adult changing facilities. The WC is provided with disposable paper towels.
- The flooring in this WC is vinyl and painted wall surfaces. This WC has the baby changing facilities located in it.
- Access to the basement is by stairs.
- There is an emergency pull cord in this toilet.
- **There are separate male and female WC's in the basement. The other WC's have ceramic floor tiles and painted walls.**

Visitor Reception

- There are two visitor reception points at Dinefwr; the first is as you arrive at the car park and is the Welcome Point (WP), this is a small hut on the roadside and the WSA staff greet the visitors in their vehicle. The second is within the Entrance Hall of Newton House (accessibility info given in 'Newton House' heading)
- There is a split House and Parkland Entry fee. Parkland fee is paid at the WP and House entry fee is paid at the inner hall. In all instances NT members go free.
- The Visitor Building (VB) is a wooden building with wooden flooring interior located to the East side of the car park.
- The VB is raised and is accessed either by step or via a wide ramp located adjacent to the Blue badge holders parking area.
- The ramp is 1.5m wide * 3.4m long at a gradient of 1:13 leading to a 1.5m*1.5m landing; the ramp then turns right through 90° off the landing up a ramp which is 1.5m wide* 1.8m long at a gradient of 1:12. There is a clear landing area at the end of the ramp of a minimum of 1.2m between the end of the ramp and the access door into the VC.
- The ramps are of a wooden structure with an anti-slip Phenolic mesh faced plywood board. There is a 950mm high timber handrail along the length of the ramp.
- The single entrance door is non-power operated, approx. 970mm wide and opens outwards to 90 degrees. There is a 30mm high ramped threshold lip at this door. Staff and volunteers can assist with opening the door if required.
- There are 4 windows and 1 half glazed set of double doors to provide lots of natural light.
- The reception desk is over 970mm high with a dropped section for wheelchair access.

Route to Newton House

- The walk from the VC to Newton House is 203m. After leaving the WP the route is on a tarmac drive to the main gates, the surface then becomes compacted pea grain gravel which **doesn't rut very easily. Care needs to be taken approaching the Porte Cochere as there is a small step down**; it is advised that people go either to the left or right-hand side of the Porte Cochere where the entry is on level ground.
- The door into and out of Newton House is entered from under the Porte Cochere and is not an automatic door
- There is a ramp, 2.44m long*1.22m wide which covers the full width of the doors to allow ease of entry. The two doors are 1.45m wide, 725mm wide each. The right-hand side door is normally open; the left-hand door can be opened to make the access wider for ease of entry and exit. Staff and volunteers are available to open the door if required.

Newton House

- Ground Floor

Entrance Hall –

- The floor in the Entrance Hall is wooden with rugs, with a mat as you come through the front door to clean shoes; this mat is less than 6mm thick. The remainder of the floors and main staircase are wooden covered with rugs or carpets which assist with minimising echo and dampening sound.
- Due to the nature of the building there are some restrictions with the use of powered wheelchairs and mobility vehicles inside the house due to turning circles.
- If you require use of a quiet space, please indicate this to a member of staff who will be able to find a suitable area for you. The Telephone room can be used on the ground floor.
- The entrance hall has 3 doors, to the left of the main door is the door to the lift and Cafe, this door is 870mm wide. The corridor is 13.7m long to the lift and a further 10m to the cafe entrance; the door is 940mm wide.

Café –

- The cafe is divided into two sections, the servery area and the main seating area, the doors from the seating area are 970mm wide and the door nearest the window is 1.02m wide. The floor throughout the café and server is wooden boards, there are 8 woven tapestry wall hangings (concealing sound baffles) and this does not have a major effect on minimising echo and volume of noise. The café and servery have large windows providing natural light which is supplemented by ceiling and wall lights which use low energy LED light bulbs.
- For staff and delivery access to the café, entry is from from the lawned area to the south of the annexe, the door is in the south west corner and is 1.0m wide, there is a short platform leading to two steps down onto a level quarry tile corridor 13m long. The corridor turns right for a further 10m and through a door 1.0m wide which leads to a small stone flagged floor area; the kitchen is on the right, there is no public access to the kitchen or corridor. (*Appendix D*)
- There is to the left of the door a set of 6 steps which will bring you onto the corridor that leads into the café which is on the right. There are handrails for both sets of steps.
- Leaving the café and avoiding the main entrance is via the route outlined above but does involve navigating steps.
- The passenger lift is available for use by visitors with limited mobility, between the ground floor and basement and ground floor and first floor. Visitors wishing to use this lift should speak to a member of staff beforehand.

Dining Room –

- The door to the right in the entrance hall takes you into the Dining Room; the entrance door is 1.02m wide. This room has a wooden floor that has a rug that covers almost all the floor; there are full length curtains on all the windows, the carpet and curtains assist with minimising echo. The room is illuminated by wall light with low energy LED bulbs. The room has two doors on the northern wall, the door on the eastern side is 970mm wide, and leads to the Basement via slate steps; the steps are 4, platform, 2, platform 11. There are several dining chairs available in the room, none of which have arms. There is a mini grand piano* in the room, will be removed in 2021 – loan item being returned to owner.
- The western door leads into the Drawing Room.

Drawing Room –

- The Drawing Room is accessed through this door which is 970mm wide; there is a short unlit corridor of 1.3m through another door 970mm wide into the Drawing Room.
- The Drawing Room can also be accessed from the Inner Hall where the door is 960mm wide.
- The Drawing Room has a wooden floor that has a rug that covers almost all the floor; there are full length curtains on all the windows, the carpet and curtains assist with minimising echo. The room is illuminated by wall light with low energy bulbs.
- There is natural light in all ground floor rooms, but some rooms are darker to protect the collections.
- There is a combination of dining type chairs with no arms and comfortable chairs and a sofas which can be sat on.

Book Room –

- The Book Room is accessed from a door to the left of the main stairs; this door is 1.12m wide, this room can also be accessed from the corridor leading to the lift and the café and is 830mm wide.
- This room has a wooden floor, there is natural light provided by the windows on the west and south side of the room are no curtains on the windows, The natural light is supplemented by two rows of ceiling mounted LED spotlights, and low energy bulbs in wall light fittings.
- This room is used as a secondhand bookshop, with three freestanding blocks of bookshelves. The bookshelves are four individual units screwed together to create stability. All units are 1.5m apart. There is sofa, and ample chairs that can be sat on. There is very little echo in the room.

Basement -

- The entrance to the Basement is down the Servants stairs which lead off the Book Room corridor; there are ten steps a platform and a further ten wooden steps.

- There is an accessible toilet in the Basement. The door into this toilet is 910mm wide; the WC has a left-hand transfer accessible WC with space to turn a wheelchair through. The room is 1.6m wide*1.4m deep. There is no natural light; the WC is lit by a circular D shaped fluorescent light fitting. There are no adult changing facilities.
- The visitor route from the disabled toilet is through a door 860mm wide and down a short wooden ramp, 860mm wide*700mm long with a gradient of 1:10 into the Brushing Room.

Brushing Room –

- The flooring is stone slabs, there is a window in the room but **there isn't** much natural light. The lighting is by low energy bulbs, there is little in the way of soft furnishings but there is not a lot of echo. There is an induction loop located near the window.
- There is a bench seat with arms and backrest available for sitting on.
- The exit from the brushing room is through a door 1.02m wide opposite the door in; and is up a short wooden ramp 1.33m wide*650mm long with a gradient of 1:6.5, this is a little steep but is over a short distance and a longer ramp would have H&S issues, the doorway leads into the Safe corridor.

Safe Corridor –

- This corridor contains several small rooms along it. The rooms are; the Games store, the Luggage store, the Silver Safe and the Knife cleaning room. These rooms are not open to public access. The flooring is stone slabs, there are no windows in the room; the lighting is by low energy bulbs, there are no soft furnishings but there is not a lot of echo.
- At the opposite end of the corridor from the Brushing Room there are two doors, one straight ahead **which leads into the Butler's Pantry** and one at 90° to it that continues your route through the basement.

Butler's Pantry –

- The door into the **Butler's Pantry** is 1m wide. The flooring is a combination of quarry tiles and cement with some rugs on the floor. The room is heavily furnished - this seems to help reduce the echo in the room. There is a window in the room but **there isn't a lot of natural light**. The lighting is by low energy bulbs. There are seats available, the majority without arms.
- There is no seating **between the Butler's Pantry and the Ale Cellar**
- The door on the **left as you exit the Butler's Pantry** is 970mm wide; the route takes you along to the Ale Cellar. The floor is stone slabs and is generally level. There are windows along the corridor; **but because it's in the basement there isn't a lot of natural light**. The lighting is by low energy bulbs. The route along this corridor takes you past **the Butler's bathroom**, there is a step of 160mm high, the room is too small to get a wheelchair in and turn around. The step also makes it difficult to get a wheelchair in. The door is 800mm wide.
- Around the corner from the Butlers Bathroom are two Wine Cellars, continuing along the corridor is the Ale Cellar and a flight of slate steps that leads to the Dining Room; the steps

are 11, platform, 2, platform 4 and entry to the Dining Room. Once past the wine cellar you go through a door 1m wide with the entrance to the Ale Cellar immediately on the left through; the door is 820mm wide.

- The Ale Cellar floor is stone slabs and is generally level. There are two small deep recessed windows along the north wall; **there isn't a lot of natural light. The lighting is by LED bulbs.** There are no soft furnishings or other items to help reduce echo and the lower level of the ceiling there is a higher level of echo in this room. There are four low benches in this room with no backs or arms.
- On exiting the room any visitors in wheelchairs or who find using stairs difficult will need to retrace their steps back to the lift.

First Floor -

- The First Floor can be accessed from the entrance hall through the door opposite the main entrance door; the door into the Inner Hall is 920mm wide, the Drawing Room can be accessed from the Inner Hall also.

Inner Hall -

- The Inner Hall floor is of wooden boards with a rug that covers a large portion of the floor the nature of the space is such that there may be echo.
- There are small windows in the west wall, but day light is limited. Light is provided using low energy bulbs.
- There is a wide wooden staircase leading to the first floor, there is a banister on the right hand side of the stairs as you go up; due to the style and width of the bannister it is not suitable to hold to provide support.
- The stairs are in three stages with a platform at each stage; the step arrangements are, 10. 8, 10 between each platform.
- At the second platform level there is a conservatory which is accessed by going up 3 stone steps. There are double doors providing entry into the Conservatory with each door being 650mm wide.

Conservatory -

- The Conservatory has lots of light due to the windows and glass roof. The floor is of quarry tiles, and although there are no soft furnishings **there doesn't seem to be** an issue with echo. There is a bench in the room to sit on if required.

Map Room -

- The visitor route of the first floor starts at the top of the stairs when you enter the Map Room via the door to the left, the door is 1.02m wide.
- The Map Room is wooden floorboards.

- There is natural light through one large window in the room; this light is supplemented by three rows of ceiling mounted LED lights.
- There is enough room to get a wheelchair in. There are two benches, with no arms or back support.
- Two other rooms can be accessed from the Map Room; at the north end of the room there are two doors which lead into an exhibition room known as the Archaeology of Home room, these doors are 890mm wide.
- The Archaeology of Home room has bare wooden flooring.
- There is one large wall mounted display unit, with few freestanding display items in the centre.
- There is natural light, the lighting is supplemented by uplighters, and fixed LED strips to display cabinets.
- The other door on the eastern wall leads into a short passageway, 1.3m long, the door exiting the Archaeology of Home room is 920mm wide and the one entering the Kings Room is 1m wide.

Kings Room –

- The Kings Room exposed bare wooden floorboard with an echo.
- There is natural light through two large windows in the room; this light is supplemented by two rows of ceiling mounted LED lights.
- There is enough room for a wheelchair to move around the room.
- There is one large bench with back but no sides for visitors to rest on.
- In the southern wall of the room is a door leading into the Landscape Room which is 1m wide.

Landscape Room –

- The Landscape Room exposed bare wooden floorboard.
- There is natural light through two large windows in the room; There are two rows of ceiling mounted LED lights, but the room remains dark. There are 4 chairs in this room, all have arms and backs.
- There are two further doors in the Landscape Room, one which leads back to the main corridor and is 1.06m wide and one into our recreated **Stockman's room**; this door is 1m wide.

125 Room –

- The 125 Room has a bare wooden floor, the fixtures and fittings help reduce the level of echo.
- The room has a large window which provide natural light; it is supplemented by low energy bulbs in wall lights. There is a display with trestle table, a glass cabinet and a plinth.
- The door out of this room back onto the main first floor corridor and is 1m wide. Once back on the corridor the visitor route continues by turning left, the door is 1m wide; this is also the corridor that leads to the lift.

Corridor –

- The corridor has no natural light and is lit by low energy bulbs in wall lights. There is a carpet runner down the centre of the corridor which is 9m long.
- There is a room 4.5m along the corridor which is the closed conservation storage room. There is no public access to these rooms.
- The corridor turns left and brings you onto the landing area of the Servants Stairs.

China Passage –

- To the right of the stairs is a door leading into the China Passage, the door is 860mm wide. There are no seats along the China Passage and currently it is not open to the public
- There is a short platform which brings you to a set of twelve steps, 810mm wide, with a handrail on each side 890mm high.
- The China Passage leads via stairs to the staff café corridor. The corridor is in two sections; the first section is 12m long and turns through 90° to pass through a door 800mm wide. The second section is 10m long, at the end of the corridor there are two steps that take you onto the corridor towards the stairs to take you down to the shop and exit; the door is 800mm wide.
- The corridor has several windows, but the nature of the surrounding buildings means that the corridor is supplemented by additional LED bulb lighting.
- The China Passage leads into the East Wing of the property; the first floor houses the Dinefwr and Carmarthenshire Portfolio staff.

East Wing Courtyard Spaces –

- The East Wing (Old Shop) is 5m along the corridor and is the first door on the left; the door into the shop is 920mm wide.
- The floor of the shop is wooden floorboards.
- There is natural light in the room, and this is supplemented by fluorescent ceiling lights.
- There is a second room entered through a door 850mm wide, there is a window, but the light is supplemented by a low energy light bulb.
- The final room is the third area of the shop with stock for visitors; the door is 820mm wide. There is a reasonable level of natural light, but this is supplemented by LED spotlight. There is a central display table with a 1200mm clearance around it.
- There is a door in the east wall which leads into the Inner Courtyard, the door is 910mm wide, there are two steps to the door level and one to exit into the courtyard.
- Visitors in wheelchairs or with mobility issues who find steps difficult can enter the East wing through a set of double doors 1.46m wide. The double doors lead into a corridor; the old shop entrance is 11m from these doors.
- The floor of the corridor is quarry tiles and is a good surface. There are two small windows in **the double doors which don't supply** enough natural light. Additional lighting is provided by ceiling mounted low energy bulbs in the corridor.

Old Kitchen –

- The Old Kitchen can be accessed from this corridor, and is 6m from the entrance to the shop. The door into the kitchen is 1.04m wide and has a 60mm step down into the room with a handrail.
- The room has a quarry tile floor which is generally good. There are large windows which provide a large amount of natural light which is supplemented by low energy bulb lighting.
- There is a door which leads from the kitchen into the courtyard and is 920mm wide but has a 220mm step from kitchen floor level to the courtyard level.

Inner Courtyard -

- The Inner Courtyard is a large open space surrounded on four sides with buildings; the floor is of compacted gravel.
- The courtyard is accessed via the arched passage with toilet facilities for people with disabilities. The length of the passage is 7m; the floor is of cobble stones and has some deep depressions which can cause problems.
- There are two rooms which lead off the courtyard that can be accessed from within the east wing.
- Other rooms that are available in the courtyard and accessed only from there are the Old Laundry and the Old Gallery.
- One commercial store is to the left, 10m from the passageway, with two stone steps from the path into the room.
- The path from the passageway to the store is stone paving slabs which are uneven in places and can be slippery when wet. The storeroom is carpeted, with some natural light, most of the light is provided by fluorescent strip lights.
- Due to the furnishings there is almost no echo in the room.
- The Old Gallery; this is a small vaulted space, with natural light. It is not open to the public and has 3 steps to reach the space; 10m from the passageway, with two stone steps from the path into the room.
- The Old Laundry is in the range of buildings opposite the arched passage, the door in is 980mm wide.
- Inside is a ramp that rises in two sections, the first is 5m long * 1.18m wide at a gradient of 1:28. The second rise is 900mm long * 1.18m wide at a gradient of 1:18. There is a handrail on the right as you go up the ramp at a height of 870mm.
- It is also possible to get onto the floor level of the room via two steps; these are to the right as you come through the door, they are 1.4m wide with each step being 115mm high.
- The room is very large with no furnishings to deaden the effect of echo. There is plenty of natural light in the room and there are additional LED spotlights available.

Catering -

- The Café is located in the annexe of Newton House and located on the ground floor.
- The counter is over 900cm high. Catering team members are available to assist with service and carrying trays.
- The width between the tables varies.
- Members of visitor groups can sit at tables if queuing is difficult and one member of the group can ask cafe staff for assistance.
- Menus are available in standard print and there are paper straws available.
- The cafe is divided into two sections, the servery and the main seating area, the doors from the seating area are 970mm wide and the door nearest the window is 1.02m wide.
- The floor throughout the cafe and server is wooden boards, there are 6 woven tapestry wall hangings by Riitta Sinkkonen Davies but this does not have a major effect on minimising echo and volume of noise
- The café and servery have large windows providing natural light which is supplemented by ceiling and wall lights which use low energy light bulbs.
- **The chairs are wooden with no cushions, the legs of the chairs and tables have ‘rubber feet’ on to minimise noise.**

Garden

- The Garden is located on the western side of the house; access to it is by the gravel area to the north of the house and following it around. Access to the garden can also be gained from the Inner Hall of Newton House through a set of double doors; the doors are 980mm wide; if the doors are closed a member of staff will open them on request.
- The doors lead to a covered area beneath the Conservatory, this area has two columns making three spaces, the one directly opposite the door has a ramp 1.5m wide* 2.0m long with a gradient of 1:8, this gradient is more than recommended but extending it would have H&S implications. (*Appendix F*)
- There is a set of two steps that take you from the gravel area down to the area around the fountain still pool.
- There are two park benches on the north side of the garden
- The garden has gravel paths on the North, South and East side, the southern end has a set of uneven stone steps leading up to the Summer House. The arrangement of steps is 4 steps, a platform, and 2 steps onto a gravel area leading to the Summer House.
- The Summer House has a step of 100mm into it. There is a bench seat the entire length of the building. The gravel area extends west of the Summer House to the Ha-Ha wall.
- Opposite the entrance to the summer house is a set of uneven stone steps leading down to the fountain. The arrangement of steps is 7 steps, a platform, and 2 steps onto a gravel path around the fountain. There is a steep grass bank at the southern end of the garden. The Fountain bowl is located in the middle of the garden within a still pool which has a short stone wall surrounding it; the pool is currently empty. The base of the pool is made of paving

slabs which are uneven and broken in places. This is not in use and a fundraising project is in place.

- The area around the still pool is gravel. Between the ground level around the house and the gravel area around the fountain still pool is surrounded by grass, some level and some at a slope.
- The west end of the house is a D shaped open grass area, there is a wall either side and this surrounds the Ha-Ha. The grassed area is not fenced and there is a drop of approximately 1.5m

Contact details for more information

T: 01558 825910

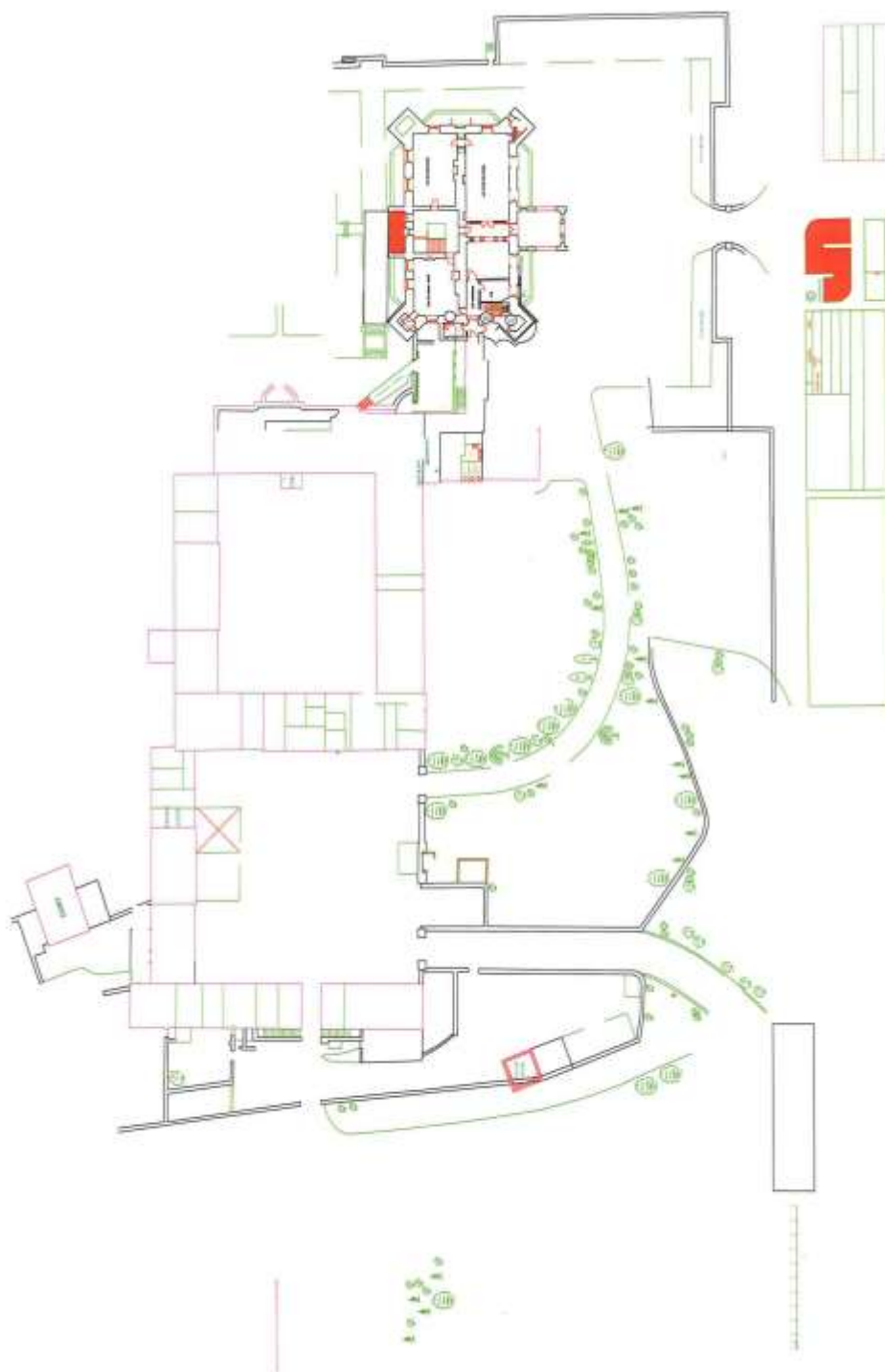
E: dinefwr@nationaltrust.org.uk

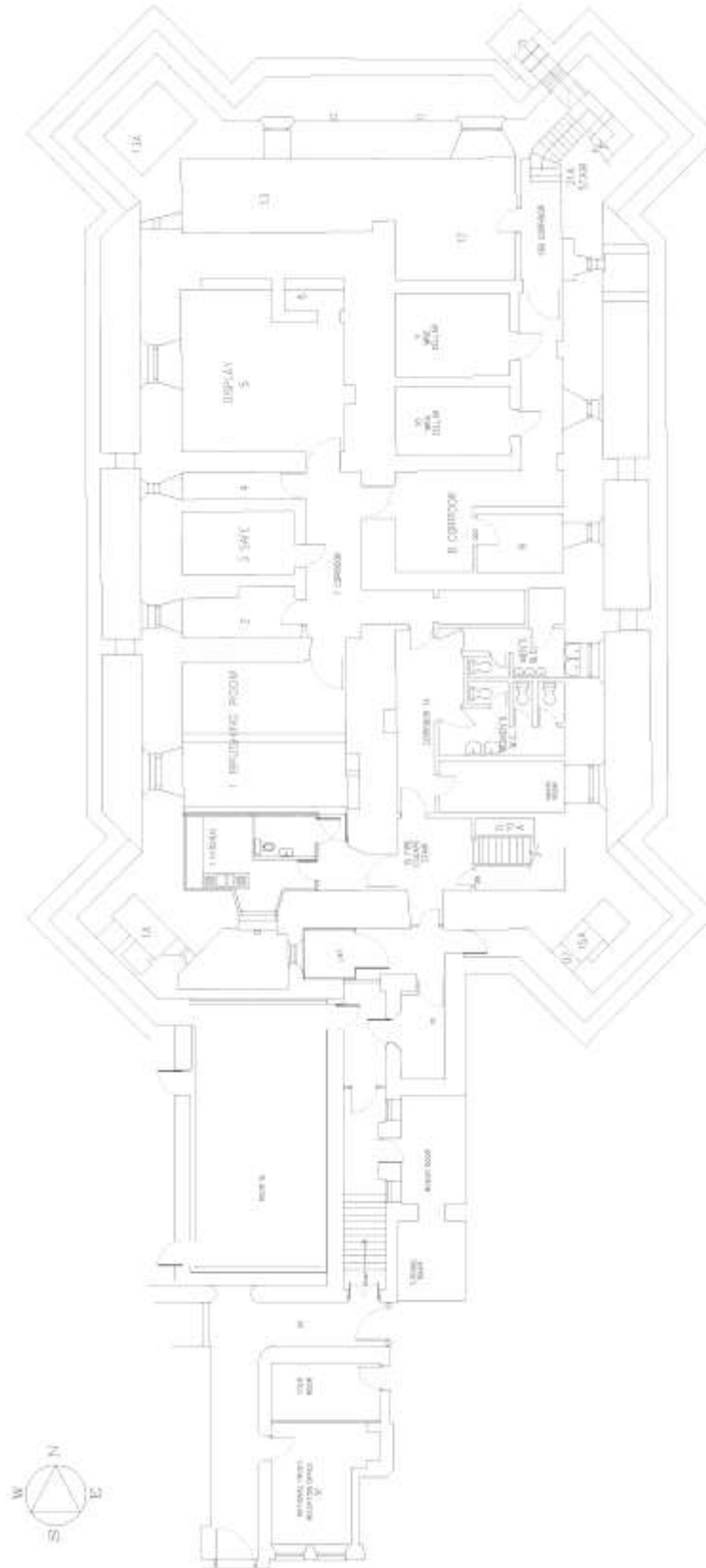
Date: January 2024

This document to be reviewed : January 2025

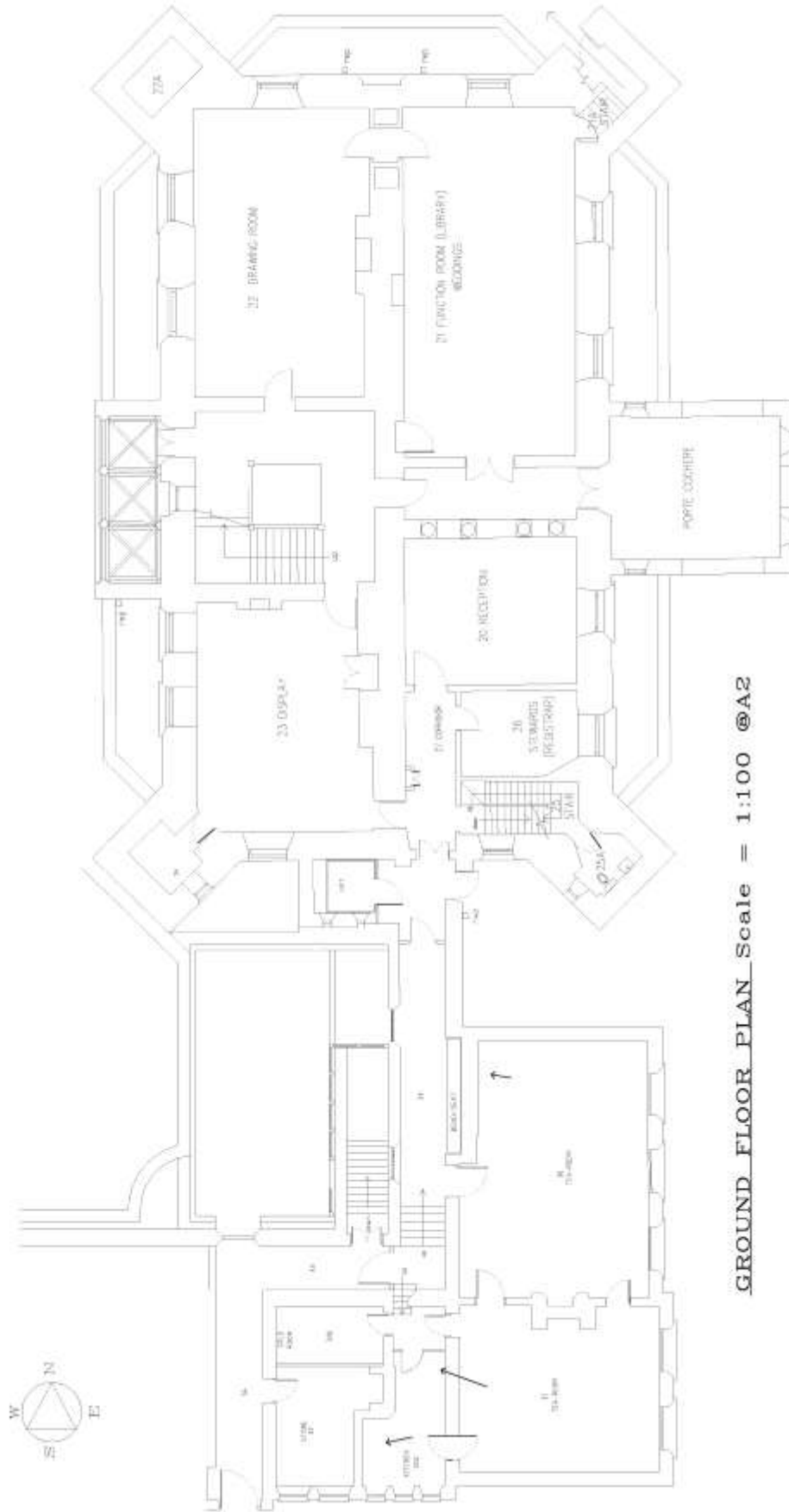
Holly Dwyer, Visitor Operations & Experiences Manager

Map(s)





BASEMENT PLAN Scale = 1:100 @A2



GROUND FLOOR PLAN Scale = 1:100 @A2

Appendixes

Appendix A



Image showing 2 x blue badge parking places at the entrance to the Board Walk.

Appendix B



Image showing 3 x WC's at rear of visitor building

Appendix C



Image showing arched passage to WC

Appendix D



Image showing staff and delivery access to the café corridor

Appendix E



Image showing lift entrance at ground level

Appendix F



Image showing entry view of garden