

## **Access Statement for Great Chalfield Manor and Garden**

Great Chalfield Manor is a two-storey medieval house with a tiered garden surrounded by a moat. There is no lift in the manor. The ground floor is wheelchair accessible. A manual wheelchair is available on request and a photo album is also available on request for visitors unable to access the first floor. There is a sensory bag available on request.

### **Sensory Bag**



There is a sensory bag available with noise cancelling headphone and a few fidget toys. Please request this when you enter the manor.

### **Arrival and Car Parking facilities**

A - Visitors with restricted mobility may be dropped off and collected from the arch-way entrance shown below.

B - To the right of the arch-way entrance to the manor there is a layby reserved for accessible parking.

C - Parking is along the side of the road.



A



B



C

### **Main entrance**

A - The route into the front entrance is on compacted gravel leading into the courtyard. The perimeters are free of gravel for easy wheelchair access.

B - There are 4 uneven steps into the house through the front door.

C - There is a sheltered seating area in the porch



A



B



C

D - inside the front hall there is a wooden seat. There are smooth flagstones in the entrance hall. Throughout the house the lighting is mainly provided though natural lighting or with picture lights. Light levels can vary depending on the weather.

E - For wheelchair access, a ramp is available on request and access is via the rear entrance of the house.

F - Staff or volunteers will assist with door opening and the ramp



D



E



F

### **Main hall**

Flooring is wood with some rugs.

Chairs are available on request.

Displays are 85cm high.

There is a step down into the stairwell of 17cm.



### **Dining Room**

Flooring is wooden with some rugs

Chairs are available for visitors to sit on.

Light levels are low: lighting is provided from 1 window and picture lights

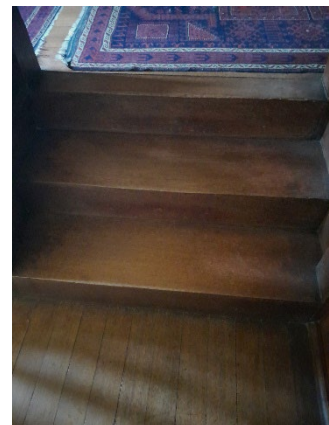


### **Access to First Floor 1**

Access from dining room to the bedroom is up a flight of curving uneven stone stairs.

The first three steps are narrow on the right-hand side.

There is a rope handrail on the left as you go up. Then three wooden stairs to the landing

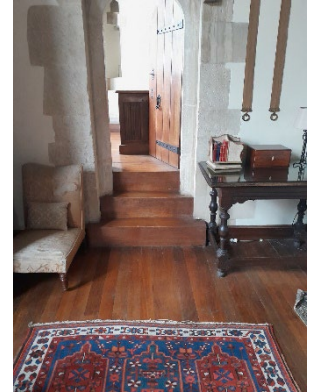




## Bedroom

Access into the bedroom is level, through an arched doorway.

From the bedroom there is viewing access to the bathroom, which is up three wooden stairs.



## Minstrels' Gallery

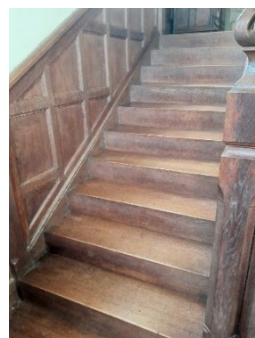
Off the same corridor as the bedroom is the doorway onto the minstrels' gallery which overlooks the great hall.

Banisters are spaced at 23cm and are 710cm high. Small children are not permitted onto the gallery.



## Access to First Floor 2

There is also a flight of stairs leading to the first floor Solar from the rear of the Great Hall. These are wooden stairs with a window seat available for visitors to use on the halfway landing.

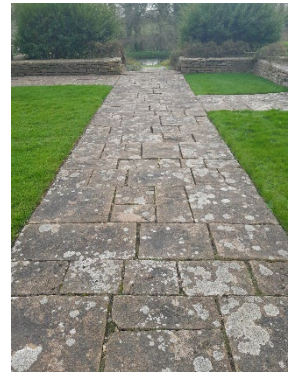


## Gardens and external areas

An accessible route map for the gardens is available on request.

### Top Garden

Access is via a ramp onto a flagstone path leading to the rear of the Manor, main lawn and access to lower garden.

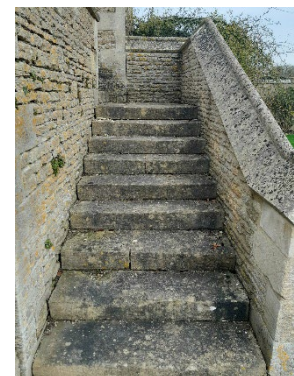


## The Lower Garden

Access is available either from the rear of the house (via a step or ramp – with help from staff) into the paved courtyard via steps.



Or Steps from the Apple House at the far end of the Main Lawn



Step free access is via the stables side of the house. The path is a mixture of cobbles in places and compacted gravel paths.





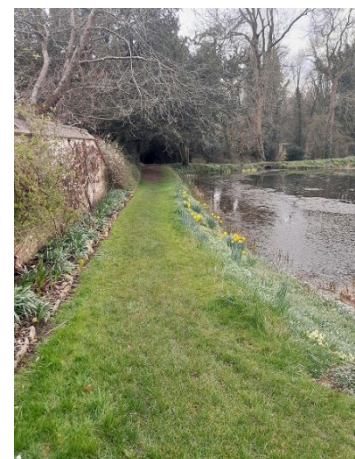
The lawns and pond are on split levels. The paths are a mix of flagstones nearer the house, and grass paths on the far side. Paths can be slightly uneven with some tree roots.

## The Pond

The Path around the pond is a mixture of uneven grass and stone with Rubber matting reinforcements and tree roots

## Toilets

There is one unisex accessible WC, Ladies and Gents WCs there are baby changing units in all toilets.



## Accessible Toilet

There is a vertical handrail to the right of the toilet and one to the right of the basin.  
There is a horizontal rail next to the toilets (opposite side to transfer).

Transfer is to the right form seated position.

An alarm call system is available.



### **Refreshment area**

There is a covered area open to the main cobbled path on the same level.

