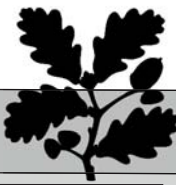


## Woodlands Habitat Activity Booklet

### What is My Land Minibeast Called?



No Legs



Worm

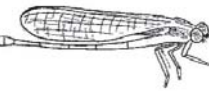


Slug

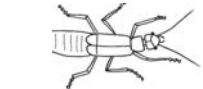


Snail

Six Legs



Damselfly



Earwig



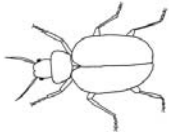
Crane fly



Shield bug



Butterfly



Beetle



Aphid



Cricket



Plant hopper



Hoverfly



Ant



Ladybird



Grasshopper



Fly



Springtail

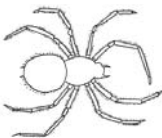
Eight Legs



Mite



Harvestman

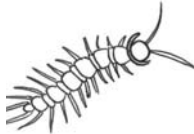


Spider

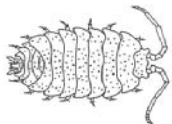
Many Legs



Millipede



Centipede



Woodlouse

### Look out for different birds

Tick off each bird as you spot it

Fieldfare



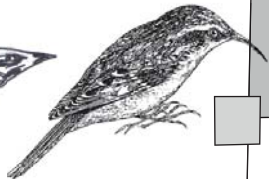

Nuthatch




Redwing




Treecreeper

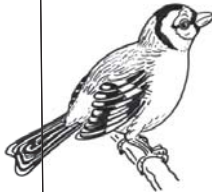



Buzzard

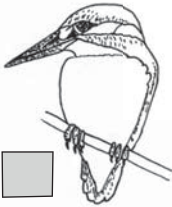



Red Kite

Goldfinch




Kingfisher




Great Spotted Woodpecker




Green Woodpecker




### What else did you spot?

Name      Where?      How many?

# Bat Ears Sound Capture Sheet



Imagine what it would be like to have really sharp hearing like a bat!

- Find a space somewhere quiet and away from other people
- Close your eyes and cup your hands around your ears to make bigger 'bat ears'.
- Listen without speaking for 5 minutes.

## What sounds did you hear?

What did it sound like?  
e.g. swishy swashy,

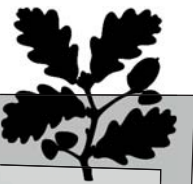
What made the sound?  
e.g. river, bird...

How did the sound make you feel? Use some of the words below or add your own...

The sound made me feel....

- |                          |                |                                 |
|--------------------------|----------------|---------------------------------|
| <b>excited</b>           | <b>annoyed</b> | <b>angry</b>                    |
| <b>I wanted to laugh</b> | <b>relaxed</b> | <b>happy</b>                    |
| <b>interested</b>        | <b>sad</b>     | <b>I wanted to open my eyes</b> |

# Tree ID Recording Sheet



## English Oak



Number seen:

Stick evidence here (eg. part of a leaf)

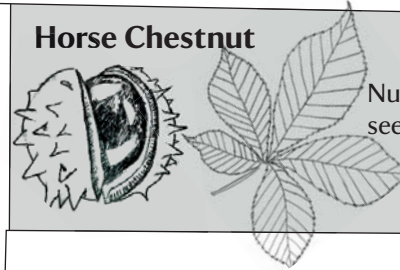
## Common Beech



Number seen:

Stick evidence here (eg. part of a leaf)

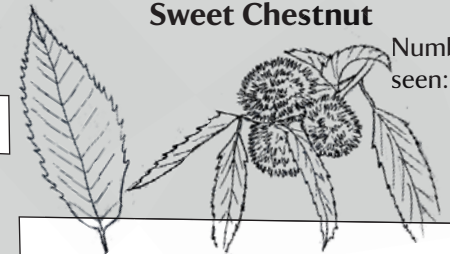
## Horse Chestnut



Number seen:

Stick evidence here (eg. part of a leaf)

## Sweet Chestnut



Number seen:

Stick evidence here (eg. part of a leaf)

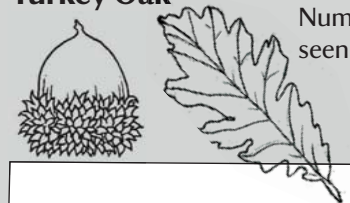
## Common Lime



Number seen:

Stick evidence here (eg. part of a leaf)

## Turkey Oak



Number seen:

Stick evidence here (eg. part of a leaf)