

Accessibility Guide

2 Morville Barn (018008)
Morville
Bridgnorth
Shropshire
WV16 5NB



Introduction

Located on Morville Hall Estate, 2 Morville Barn is a cosy conversion in South Shropshire which is surrounded by lots of local attractions. Originally believed to be stables, this early 18th-century converted barn offers a cosy and rustic stay for family and friends who want a place to go away together. 2 Morville Barn is one of two halves of Morville Barn and both 1 and 2 Morville Barn can be booked together for two families to come together but enjoy having their own spaces at the end of the day.

The Cottage is arranged as follows:

Ground Floor:

- Entrance hall, Kitchen/dining room and lounge.

First Floor:

- Double bedroom and en-suite shower room, double bedroom, twin bedroom with a single bed and sofa bed, bathroom with shower over bath.

Pre-Arrival

- See the main webpage for booking and location details.
- Please contact us prior to booking if you have any specific access requirements.
- Directions provided with booking.

Approach

- Accessed directly off the main road, following the track to the right the parking area is directly next to the boundary fence of the garden of the property.

Arrival & Parking Facilities

- The parking area, garden and pathways are flat. There are two designated spaces directly outside each cottage garden.
- There is a small picket fence 1100mm wide with a chain that you lift on and off to enter and exit the garden.
- The front door is 14 meters from the parking area.

Getting in (and out) of the cottage

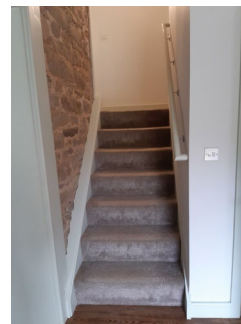
- The key safe for 1 Morville Barn is on the right-hand side of the front door.
- The pathways in front of the cottage and in the parking area is a compacted stone.
- There is a step into the building 150mm deep, the entrance door is 900mm wide.
- The hallway as the original cobbled flooring as you step in and then the rest of the hallway has vinyl flooring.
- There is only one door in and out.



Getting around the cottage

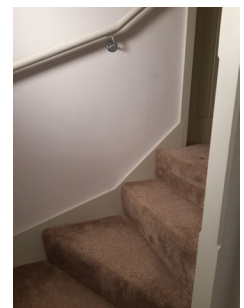
Ground floor:

- From the hallway to the left is the door to the sitting room, the door opening is 800mm.
- From the hallway to the right is the door to the kitchen, the door opening is 700mm.
- Carpeted stairs 800mm wide then lead from the hallway up to the landing level, there are 7 steps to the landing level, they are all 200mm depth. There is a handrail on the right-hand side.
- All doors have knob handles that you need to turn to open the doors.

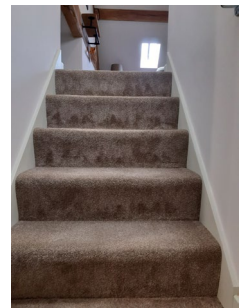


First floor:

- From the landing level, there are three staircases off this up to the first-floor rooms, all carpeted.
- To the right is a bending staircase 700mm wide with 5 steps, all 200mm deep. There is a handrail on the left-hand side. This leads to a small landing where there is the door to the one double bedroom 620mm wide and a door to the shower room with an opening of 710mm.



- Back on the landing level there is a second staircase 800mm wide in the middle that goes up 5 steps, all 200mm deep, with a handrail on the right-hand side which leads to another small landing. The door to the left is to the other double bedroom which has an opening of 700mm. The door straight ahead is to the main bathroom which has an opening of 640mm, and then there is a door on the right to a cupboard which has an opening of 550mm.
- Back on the landing level there is a door to the third bedroom with single bed. The door opening is 700mm. There is then another 750mm wide staircase of 5 steps, all 200mm deep into the bedroom. There is a handrail on the right-hand side.



Kitchen

- Height of worktop is 910mm.
- There is a kitchen table with a height of 760mm.
- There are 6 chairs with a seat height of 480mm.
- There is a freestanding cooker, fridge freezer, microwave, toaster, and kettle provided.



Sitting Room

- There is a 3-seater chaise long sofa with a seat height of 460mm.
- There is a 3-seater sofa with a seat height of 460mm.
- Coffee table is 280mm high and side table is 340mm high.



End Double Bedroom

- King size bed 5ft with height of 650mm.
- Walkway around the bed is 650mm.
- Bedside tables are between 650mm and 300mm high, lamps have a switch on the cable.
- Chest of drawers is 950mm high.
- Chair in the room has a seat height of 440mm.



Shower Room

- Shower room has vinyl flooring, and electric shower.
- Corner shower cubicle with double opening doors with 520mm opening, there is a step up of 200mm into the shower.
- Sink basin has a height of 840mm with mixer lever tap.
- The toilet has a seat height of 420mm with push button flush.

Middle Double Bedroom

- King size bed 5ft with height of 640mm.
- Walkway around the bed is 680mm.
- Bedside tables are 510mm high, lamps have a switch at the top by the lightbulb.
- Chest of drawers is 940mm high.
- Chair in room has a seat height of 440mm.



Main Bathroom

- Bath is 1700mm long, it is P shaped and is 540mm at its narrowest point, 650mm at the shower end. The bath has a height of 550mm.
- There is a shower over the bath with separate turning knobs for heat and flow.
- There is a mixer bath tap with separate lever taps for hot and cold water.
- The sink basin height is 820mm. There is a single lever mixer tap.
- The toilet seat height is 420mm and the toilet has a push button flush.



Single Bedroom

- Single size bed 900mm width with height of 640mm, the bed is tucked in an alcove, so there is only a 300mm walkway along the side of the bed.
- Bedside tables are 500mm and 600mm high, lamps have a switch on the lamp fitting near the lightbulb.
- Chest of drawers is 950mm high.



Garden

- The garden is level with seating area outside the cottage and the rest to lawn with a couple of trees. The garden is enclosed with a fence.
- There is another picket gate at the side of the cottage with an opening of 960mm which is access to the compost bin.
- The garden table has a height of 740mm.
- The garden chairs have a seat height of 400mm, and they have arm rests at 640mm.



Additional Information

- Assistance dogs are welcome at all our cottages.
- In the event of a fire, it is the responsibility of the guests to evacuate themselves. Vibrating fire/smoke detectors are available if requested at time of booking. Please contact us if you have any other specific access requirements in this respect.

Facilities at all cottages

The National Trust aims to expand the list of accessible /equipment/items available at each cottage and these may include:

- Cordless kettle
- Hollowfibre bedding
- Chair with armrests
- Good reading light
- Large handle vegetable peeler
- Easy tin opener
- Non-slip mat for bath/shower
- Non-slip place mat
- Easy jar opener
- Information in alternative formats (on request)

Please note that we cannot guarantee that all items will be available at the time of your visit. Please enquire at the time of booking regarding any particular requests.

Specialist equipment

Other specialist equipment such as wheelchairs, bath seats, toilet frames etc may be available for loan or purchase from the local Red Cross loan centre. Please check this out before booking the Cottage and contact us if you require further information.

<http://www.redcross.org.uk>

Future Plans to improve Access to NT Holiday Cottages

- We are currently in the process of writing accessibility guides for all our holiday cottages and improving access over time for all our guests. All feedback is very helpful in informing us of ways in which we can improve access to all our cottages. We welcome any comments or ideas from you about access at this cottage and thank you for taking the time to do this. Please do this in the most convenient way for you. See contact details below or information on website.



About the Accessibility Guide

- This Accessibility Guide is intended to provide key information about the cottage that may be particularly relevant to guests with disabilities. Please contact us prior to booking if you would like information that is more specific and we will be happy to oblige.

Email: cottages@nationaltrust.org.uk

Phone: 0844 8002070

Access for All at the National Trust

- The Access for All office works to improve access at all National Trust cottages and properties. The office welcomes comments and ideas on improving access.

Phone: 01793 818531

Email: accessforall@nationaltrust.org.uk

Date October 2022