

National Trust Cottages Accessibility Guide

Sextons Lodge, Cromer, Norfolk.

Cottage reference: 010026



Cottage details

Sleeps: 5

Bedrooms: 3

Up to 3 dogs
allowed

Introduction

This attractive and spacious detached cottage is set beside the former exit gateway from Felbrigg Hall. It has an enclosed and private garden with direct access to miles of walks in and around Felbrigg Park.

Standing on a quiet back lane it is only minutes from sandy beaches and bustling market towns in North Norfolk, renowned for its individual shops and galleries, traditional pubs and good restaurants. There is a village inn, bar and restaurant in Aylmerton, which is within walking distance via the foot path opposite.

The Cottage is arranged as follows:

Ground Floor: Rear Porch with washing machine and tumble drier. Kitchen, dining room, sitting room with wood effect electric fire, wc and hallway with stairs to first floor

First Floor:

Small landing, three bedrooms (1 double, 1 twin, and 1 single), bathroom with shower over bath.

Pre-Arrival

Please contact us prior to booking if you have any specific access requirements.

See the main webpage for booking and location details. Directions provided with booking

Approach



The cottage is situated at the former exit gateway to felbrigg hall, It is still used.

Arrival & Parking Facilities

Parking: Adjacent to the cottage.
Garden: An enclosed and private garden.

Getting in (and out) of the cottage





Getting around the cottage

Ground floor:

There are two steps to get into the porch, through the porch there is a step down into the kitchen, the dining room hall way, bathroom and living room is on the same level. In the hallway there is an external door with a step up.

First floor:

Once up the stairs to the first landing the steps split off to the left and right hand side, to the left is the bathroom, double bedroom and the single bedroom and to the right is the twin bedroom



The exterior front door is 840mm wide.

The front door can be reached by a step up of 100mm by a 600mm flat, followed by the door ledge which consists of a 70mm step up by a 130mm flat then a further step up and over of 10mm by 20mm flat finally a 90mm step down.

Minimum clearance
750mm Key safe at
1440mm high.

Cabinets are 880mm deep, by 920mm high. Inside is the washing machine and tumble dryer.

Kitchen



Height of worktop is 930mm by 590mm depth. Also has high cupboards with depth 300mm.

The door through from the porch is 920mm Wide, this has a step down of 10mm followed by a flat of 50mm followed by further step down of 50mm.

door leading through to dining room is 870mm wide.

The kitchen has fitted units with a freestanding kettle, microwave, cooker and electric hob, fridge freezer, washing machine. Sink has mixer Taps. Light switch at 1340mm high. Tiles floor with an entrance mat.

Ground floor Bathroom



WC, basin

The WC is 430 mm high

The basin is 780mm high

The minimum clearance is 530mm

The door is 630mm
wide

The light is 1370mm from ground
level There is a sloping roof
behind the toilet

Hallway

Minimum clearance is 800mm

The front door is 920mm wide with a wicker grass mat at 20mm high.

Staircase consists of 11 steps then breaks with a further 4 each side. Stairs are 180mm high
and 240mm depth excluding the first step which is 190mm.

Sitting Room



Door is 750mm wide.
Minimum clearance is 550mm

Views onto side of house and adjacent drive.

Room has a 2-seater sofa and one wing-backed armchairs all with height off 430 mm
Two table lamps on various tables both with height of 400 mm. ceiling pendant light in centre of room.
Electric fire with plinth of height 10mm.
Book shelf with height 1100mm with lamp on top.
TV cabinet with height 400mm Carpeted floor with large rug.

Dining Room



Wooden dining table seats 5 people with height of 770mm with a clear knee space of 600mm underneath.

The chairs are wooden with seat height at 440mm

There is a corner dresser in the dining room with width 850mm Minimum clearance is 750mm

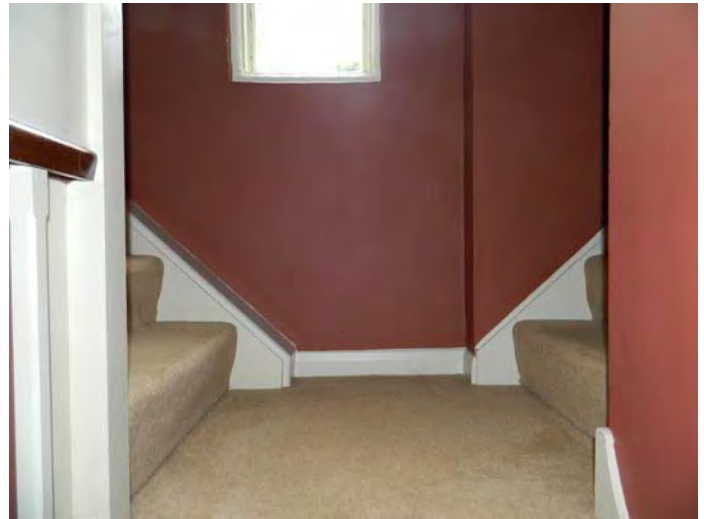
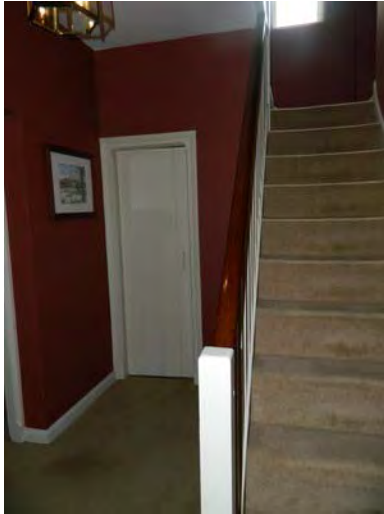
Light switch at 1440mm high

Door from the kitchen into dining room is 870mm wide Door from dining room into hall is 770mm wide

Cabinet in room is 920mm high
Small table with height 740mm with lamp on. Telephone on window sill at height 850mm

Staircase consists of 11 stairs to reach a landing where can go either left or right, both have a further 4 steps to get to the final landings.

Hallway



Single Bedroom



Door width is 700mm wide
Bed dimensions of single bed (sleigh bed) are 500mm high, 950mm wide and 1900mm long.

Clearance below bed is 230mm
Airing cupboard in room with door, latch on door is at height 1370mm.

Wardrobe is 990mm wide
Bed side cabinet at height 680 with lamp on. Light switch is 1400mm high from ground.

Minimum clearance is 800mm
Chest of drawers at height 670mm.

Twin Bedroom

Access by turning right at top of stairs, followed by a further 4 to the right.



Door is 720mm wide
The two beds are 600mm high, 950mm wide and 1950mm long.
Clearance below beds is 300mm.

Chair height is 450mm, Wardrobe is built. 2 bed side cabinets at height 600mm with lamp on both.
Light is in the centre of the room with switch at 1340mm from ground level Minimum clearance is 350mm
Sink in bedroom is 770mm high. Chest of drawers is 820mm high.

Double Bedroom



Door is 700mm wide with step down
of 20mm

Bed is 650mm high, 1500mm wide and 1950mm
long with clearance below of 320mm

Chair at height of 430mm

Wardrobe is height 1800mm with width 1050mm

Bed side tables at height 700mm with lamps.

Chest of drawers 920mm high and Wooden
chest is 580mm

Light switch is at 1460mm



Toilet is height 400mm

Sink is 800mm high

Door is 700mm wide

Light is a pull cord and it at 1280mm high

Internal measurements of bath are 500mm wide 450mm high and 800mm
1200mm long Shower within bath at 1800mm from internal bottom of
bath.

Garden

An enclosed and private
garden



Additional Information

- Assistance dogs are welcome at all our cottages
- In the event of a fire, it is the responsibility of the guests to evacuate themselves. Vibrating fire/smoke detectors are available if requested at time of booking. Please contact us if you have any other specific access requirements in this respect.

Facilities at all cottages

The National Trust aims to expand the list of accessible /equipment/items available at each cottage and these may include

- Cordless kettle
- Hollowfibre bedding
- Chair with armrests
- Large handle vegetable peeler
 - Easy tin opener
- Non-slip mat for bath/shower
 - Non-slip place mat
 - Easy jar opener
- Information in alternative formats (on request)

Please note that we cannot guarantee that all items will be available at the time of your visit. Please enquire at the time of booking regarding any particular requests.

Specialist equipment

Other specialist equipment such as wheelchairs, bath seats, toilet frames etc may be available for loan or purchase from the local Red Cross loan centre. Please check this out before booking the Cottage and contact us if you require further information.

<http://www.redcross.org.uk/standard.asp?id=89425>

Future Plans to improve Access to National Trust Holiday Accommodation

About the Accessibility Guide

This Accessibility Guide is intended to provide key information about the accommodation that may be particularly relevant to guests with disabilities. Please contact us prior to booking if you would like information that is more specific and we will be happy to oblige.

Email: cottages@nationaltrust.org.uk

Phone: 0344 8002070

Access for All at the National Trust

The Access for All office works to improve access at all National Trust accommodation and properties. The office welcomes comments and ideas on improving access.

Phone: 01793 818531

Email: accessforall@nationaltrust.org.

Date: 24/09/22