

National Trust Cottages Accessibility Guide

Mustard Pot Cottage

Reference: 010019

Category 3

Introduction

Standing in its own enclosed garden, the octagonal Mustard Pot Cottage nestles within a small woodland on the Felbrigg Estate. The cottage Sleeps 4 people and is located near to a gate-house that borders the approach road to Felbrigg. There are good path links to walks on the estate and to the mansion; and within a short driving distance local coastal towns and beaches can be easily reached.



The Cottage is arranged as follows:

Ground Floor:

- Kitchen, utility room, bathroom with separate shower cubicle and WC. separate lavatory off the conservatory. Bedroom 1 twin opposite to the bathroom, dining room and small octagonal sitting room with open fire. Central heating cupboard in the hall.
- There are no changes in level on the ground floor

First Floor:

- Small octagonal double bed room reached by 10 narrow carpeted spiral stairs with rope support rail. 3 further steps lead to the bed-room. Storage heater to the upper room.

Other

- Conservatory/secure store with single WC
- Vinyl floor to conservatory
- Door to wc 740mm width/wc 440mm seat height/wash basin 880mm height with turn handle taps
- Ample parking spaces within 5m of the main door.



A woodland path leads to the largely level enclosed garden bordered by high hedges and a timber fence with a 5-bar gate.

Instructions for access are available in your Cottage Booking Instructions.

Pre-Arrival

- See the main webpage for booking and location details.



www.nationaltrustcottages.co.uk/search/Norfolk/mustard_pot

- Please contact the Contact Centre 0844 8002070 prior to booking if you have any queries or specific access requirements.

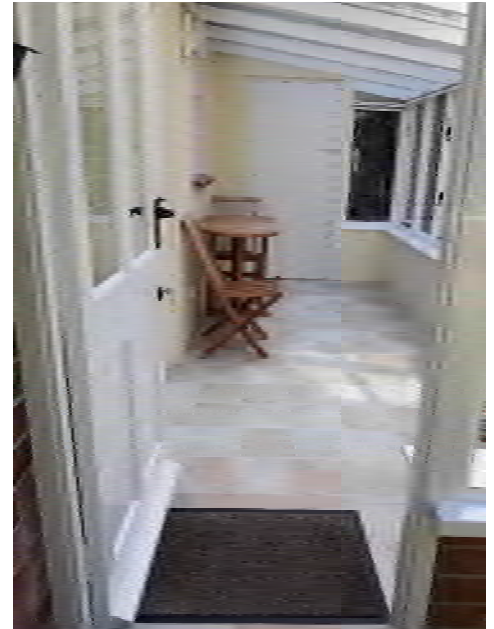
Arrival and Parking Facilities

- 5 bar gate leading to large parking area is located nearby with a level gravelled surface
- 3 cars can be accommodated with ease. Access to the cottage via the woodland lane may be difficult during heavier winter weather.
- The key safe code is in your information pack. Torch is recommended if arriving after dusk.

Getting in (and out) of the cottage

The building has three entrances but only one is used leading through the conservatory to the kitchen door. It is clear where to go from the car park and there is a concrete path up to the conservatory.

- Key Safe: height 1540mm to centre of unit.
- Door into the conservatory is 740mm wide
- Small threshold step of 100mm at the door into the conservatory
- Lighting is good with windows to three sides.
- From the conservatory there is a light timber door into a single WC.
- Door to the clear width of the door to the WC is 710mm.
- Height to the WC seat is 440mm with a lever flush.



Getting around the cottage

Ground floor

- Clear door widths to key rooms range between 650mm - 750mm
- The corridor leading to the bathroom and twin bed-room is 680mm wide (net of skirting boards).
- Clothes hooks in corridor are set at a height of 1740mm
- Floor coverings include vinyl flooring in the kitchen and utility room with tiles to the dining area. Other areas covered with close weave carpet. Vinyl is used in the wet areas.
- Low head height between the dining and sitting areas
- Natural illumination from a number of windows, with additional standard and table lamps. All lights are fitted with low-energy bulbs.

First floor:

- Door separates sitting room from the Norfolk winder stairs at 660mm wide
- Stairs to first floor to one double bedroom. All steps are at a height of 200mm with 1st step 40mm height
- 3 further steps lead into the double bedroom from a small landing. The head height at the head of the stairs is 1540mm. Steps 2 x 200mm high and 1 at 160mm



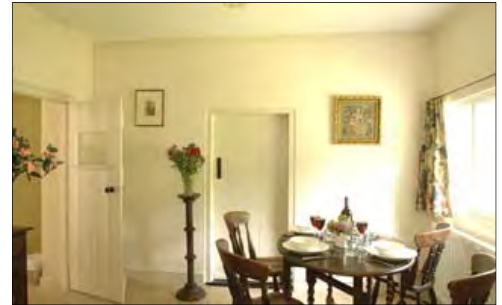
Kitchen

- Vinyl flooring floor
- Good circulation space
- Height of worktop is 900mm throughout.
- Under-counter fridge
- 1.5 Sink. Spotlight over. Mixer taps.
- Electric combined oven with separate grill and hob top. Easy to see and use controls
- Microwave - easy to see and to use controls
- Good levels of natural and artificial light
- Cordless kettle
- Toaster
- Fridge/freezer
- Floor mounted Washing machine and dryer in the utility room. Doorway 740mm with no threshold.



Dining room

- Door into dining room is 690mm. No threshold
- Flooring of ceramic tiles
- Circulation moderate.
- Gate leg table with 2 drop down leaves. Height is 770mm.
- 4 dining chairs with seat height of 460mm
- Landline phone is located in this room.
- Dresser with music system, brochures etc
- Less illumination in this room. Table lamp provided.



Sitting Room

- Small sitting room with 2 settees with a seat height of 430-450mm. Flat screen TV with remote on small cupboard
- Illumination levels are reasonable with additional wall lights and table lights.
- Circular table 470mm height
- Open fire - guard is available
- Curtains - easy pull
- Floor coverings - carpet and rugs
- 3 sets of double electric sockets



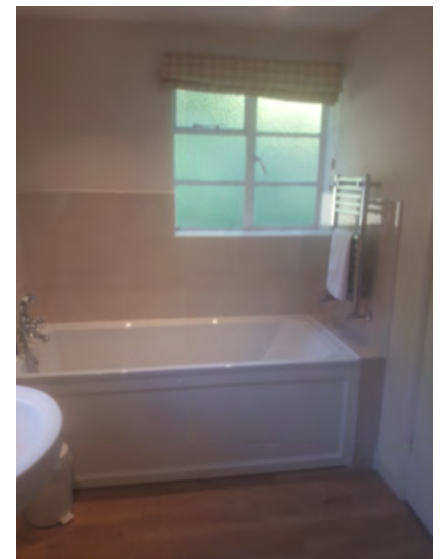
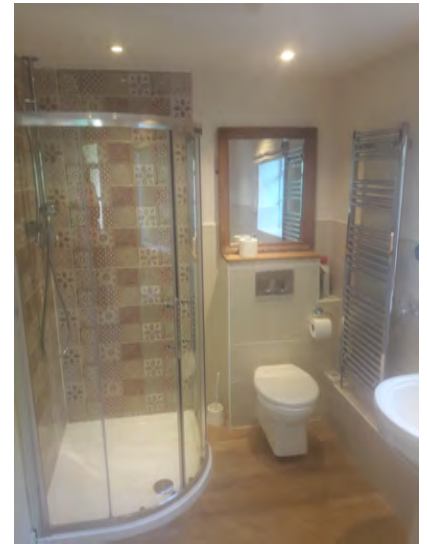
Mobile phone coverage is poor.

Landline phone with facility to identify calls chargeable has been provided

Internet coverage is poor.

Ground floor bathroom

- Door to bathroom 700mm wide. Threshold step of 10mm
- Vinyl floor covering
- Corner shower cubicle. Max door opening 520mm width
- Height to shower wand in lowest position 1370mm
- Height to shower controls (centre) 1300mm
- Step into the shower is 110mm high.
- Close coupled WC with height to seat of 430mm.
- Distance between radiator and the front of the WC pan is 360mm
- Height of wash basin is 860mm with lever taps
- Acrylic bath with mixer shower taps. Bath height is 600mm. Internal depth is 380mm. Internal length 1400mm.
- Clothes hook behind door at a height of 1750mm
- Heated towel rail.
- Bolt to the door.

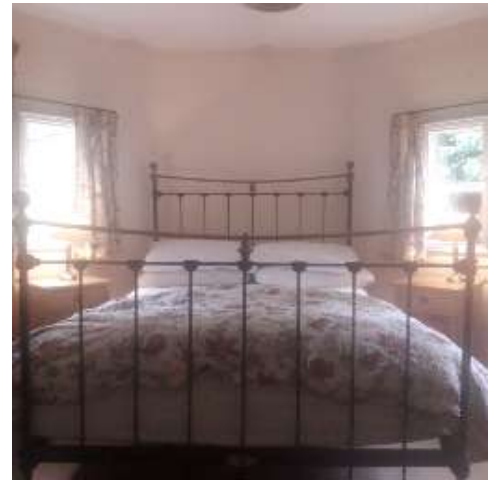


Ground floor twin bedroom

- Door into twin bedroom 710mm wide with wooden threshold of 40mm height/120mm depth
- Low door height of 1700mm
- Bed height 500mm/ 2000mm length/ 900mm width. Single pine frame beds
- 900mm between beds.
- Pine beds with space under both.
- Chest of drawers 860mm height
- Wardrobe
- Central light, bedside shelves and lights to each bed (easy to reach).
- Carpeted
- Curtains - easy pull
- 2 sets of double sockets



- Low ceiling height on the landing at the top of the stair is 1540mm
- Double Bedroom - octagonal
- Metal frame bed - king size 2000mm long x 550mm high x 1340mm width
- Secondary glazing
- Bedside cabinets 680mm height
- 2 bed-side lights with low energy bulbs
- Chest of drawers 670mm height
- Night storage heater
- Decorative fire place only
- Width of arch leading into bedroom from the landing is 600mm wide
- Good levels of illumination



Garden

- Enclosed garden mainly laid to lawn
- Garden furniture available

Additional Information

- Assistance dogs are welcome at all our cottages
- In the event of a fire, it is the responsibility of the guests to evacuate themselves. Vibrating fire/smoke detectors are available if requested at time of booking. Please contact us if you have any other specific access requirements in this respect.

Facilities at all cottages

The National Trust aims to expand the list of accessible /equipment/items available at each cottage and these may include

- Cordless kettle
- Chair with armrests
- Good reading light
- Large handle vegetable peeler (not seen)
- Easy tin opener
- Non-slip mat for bath/shower
- Non-slip place mat
- Easy jar opener
- Information in alternative formats (on request)

Please note that we cannot guarantee that all items will be available at the time of your visit. Please enquire at the time of booking regarding any particular requests.

Specialist equipment

Other specialist equipment such as wheelchairs, bath seats, toilet frames etc may be available for loan or purchase from the local Red Cross loan centre. Please check this before booking the Cottage and contact us if you require further information.

Future Plans to improve Access to NT Holiday Accommodation

We are currently in the process of writing accessibility guides for all our holiday cottages and improving access over time for all our guests. All feedback is very helpful in informing us of ways in which we can improve access to all our cottages. We welcome any comments or ideas from you about access to this cottage and thank you for taking the time to do this. Please do this in the most convenient way for you. See contact details below or information on website.

About the Accessibility Guide

This Accessibility Guide is intended to provide key information about the accommodation that may be particularly relevant to guests with disabilities. It is reviewed annually. Please contact us prior to booking if you would like more detailed information and we will be happy to oblige.

Phone: 0344 800 2070

Email: cottages@nationaltrust.org.uk

Access for All at the National Trust

- The Access for All office works to improve access at all National Trust accommodation and properties. The office welcomes comments and ideas on improving access.

Phone: 01793 818531

Email: accessforall@nationaltrust.org.uk

Dated 28/10/22