

National Trust Cottages Accessibility Guide

Coastguard Cottage 3

Peppercombe

Horns Cross

Bideford

Devon



Cottage Ref: 012009

Introduction

- Coastguard 3 is set in a delightful, wooded setting in the heart of the Peppercombe valley just half a mile from the beach. Tranquillity and bird song prevail
- Built of cob, Coastguard 3 is the smallest of three cottages situated at the far end of the terraced row
- The cottage has eco heaters, a multi-fuel stove, convector heaters and a heated towel rail in the bathroom
- There is wifi in the cottage and a phone in an outbuilding behind Coastguard Cottage 3, which is just 100 yards below Combe Cottage
- The land immediately surrounding the cottage is flat but the wider area is hilly and uneven

The cottage is arranged as follows:

Ground Floor

- Sitting room, kitchen/dinner, bathroom with WC, rear hallway with back door
- Stairs to first floor

First Floor

- Double bedroom
- The cottage is furnished for 2 people

Pre-Arrival

- See the main webpage for booking and location details
- Please contact us prior to booking if you have any specific access requirements
- Directions provided with booking

Approach

- From the main road, a narrow lane leads you to a padlocked, five bar gate. A combination lock secures this and a torch is necessary as the numbers on the combination can be difficult to read, especially in the dark
- There is no illumination at the all along the track and it is strongly recommended that you arrive before dark
- Once through the gate, there is an approximately 0.7m rough and stony track, with a steep slope to the left, to drive down to the cottages. Low slung vehicles must take particular care and no vehicle should be driven at more than 10 mph



Track to cottage

Junction at bottom of hill – turn left

Arrival & Parking Facilities

- The sloping, uneven, gravelled, car parking area offers one parking space per cottage
- A movement sensor illuminates the corner of the building at Peppercombe Cottages, which gives some light when parking the car in the dark
- From the car parking area, there are 7 steps and then a level path approximately 6 metres to the cottage door
- The key safe is on the wall in the canopied porch area. It is operated by a combination lock mechanism. A torch is recommended, especially if arriving in the dark, as the numbers on the lock can be difficult to see
- There is a light in the porch but this is not on a sensor. It will usually be left on during the winter months



Car parking area (space is marked)



Steps from car park

Getting in (and out) of the cottage

- There is a step of 40mm up into the cottage
- The entrance door has a clear opening width of 800mm
- There is a back door from the hallway to the path behind the cottages
- The back door is 650mm wide with a step down from the door of 250mm



Getting around the cottage

Ground floor:

- Two doors lead from the sitting room: one to the kitchen diner, the other to the hall, bathroom and first floor
- There are two steps, each of 150mm from the sitting room to the hall
- Floor coverings are carpet in the sitting room, stairs and hallway, wood flooring in the kitchen/diner and bedroom and vinyl floor covering in the bathroom
- There are 7 high steps, each at a height of 250mm to the first floor. The first three steps turn. There is a banister on the right and a handrail on the left for the top 4 steps. There is a small landing after 3 steps

- Minimum clear opening of internal doors on ground floor is 650mm
- Consumer unit is in the cupboard in the hallway near the back door

- **First Floor:**

- Double bedroom with wood floor
- Minimum clear opening of bedroom door is 660mm

Sitting Room

- Slightly recessed window, with full length curtains, with view of garden and woodland
- A large wo-seater sofa with back cushions. The seat height is 470mm
- Scatter cushions
- One upright armchair, with a seat height of 430mm
- Lighting comprises one, double wall light and one floor lamp
- Main light switch by front door at a height of 1320mm. Alternative switch by door to hallway
- 24inch TV with separate DVD
- Radio – mains powered
- Front door can be screen with full length curtains. Coat hooks on the back of the door at 160mm
- Small side tables with one lamp
- Wood burning stove



Views to kitchen door and door to bathroom and bedroom

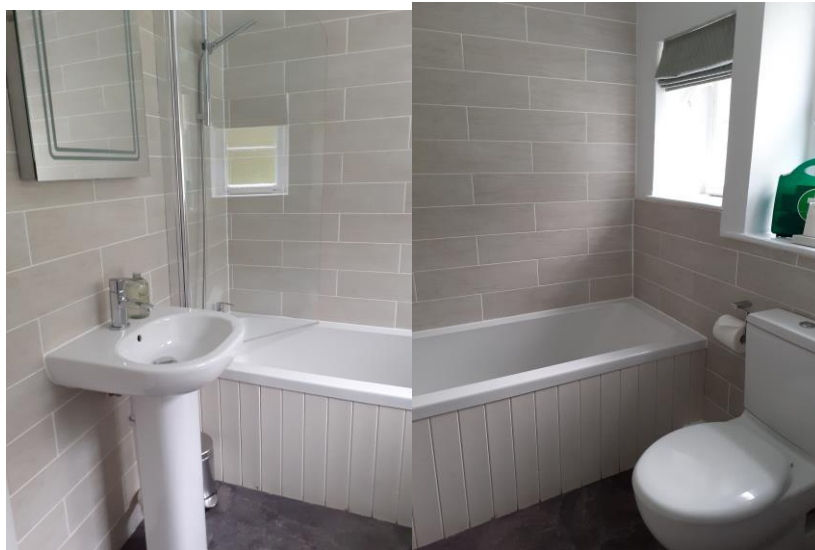
Kitchen/Dining Area

- 3 steps down from sitting room – no handrail
- Height of worktop is 920mm from floor level with underneath storage
- Sink with twist taps
- Integrated, electric cooker (4 heat spots) with grill. Control knobs for the hob are at the front of the hob
- Integrated microwave, cordless kettle, toaster, fridge with small icebox
- Integrated dishwasher
- Integrated washing machine/dryer
- 2 x 2 bar spotlights with LED lamps
- Small dining table (2.4' x 3' with extension flaps) has a knee clearance of 600mm with 2 wheel backed wooden chairs with seat height of 400mm and 460mm, backrests but no arms
- The kitchen window, with drape blind overlooks the garden



Bathroom

- Door from hall into the bathroom
- Bath with adjustable shower head from attachment above bath. Operated with lever taps
- WC is 430mm high
- Hand basin is 850mm high with one lever tap
- Backlit mirror and integral shaver point recessed behind the side of the mirror - low right
- The room is lit with three, recessed, led spotlights
- Heated towel rail
- 2 windows with drape blinds

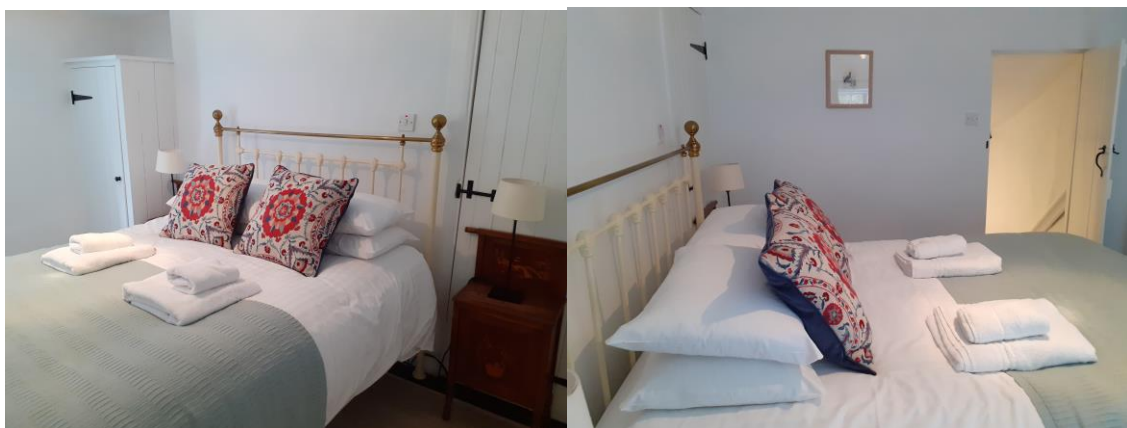


Hall and Stairs



Double Bedroom

- 5' feature, iron bed (900mm), bed length is 2000mm, bed height 500mm. Clearance below bed is 330mm.
- Bed is in a centralised position
- Small wooden chair at a height of 450mm
- Bedside tables at a height of 750mm and 800mm each with a table lamp
- Sliding sash recessed window with curtains
- 4 drawer chest of drawers with a dresser-top mirror
- Built in wardrobe with a rail height of 1600mm from floor level
- 2 small rugs with anti-slip underlay
- One ceiling light
- 2 hooks on back of bedroom door at 1620mm



Garden

- Accessed via gap in wall opposite front door
- Slightly sloping gravelled area with garden table and a bench seat with arms
- Open area
- Rotary washing line at far end of lawn which is shared by the three cottages in the row



Additional Information

- Assistance dogs are welcome at all our cottages
- In the event of a fire, it is the responsibility of the guests to evacuate themselves. Vibrating fire/smoke detectors are available if requested at time of booking. Please contact us if you have any other specific access requirements in this respect
- There is no mobile telephone signal at Peppercombe

Facilities at all cottages

In addition to the standard equipment and facilities, each cottage is equipped with the following:

- Cordless kettle
- Good reading light
- Large handle vegetable peeler
- Easy tin opener
- Non-slip mat for bath/shower
- Hollow fibre duvet and pillows
- Information in alternative formats (on request)

We aim to provide these items in all cottages but please check when booking as to their availability and to check if new items have been added to the list.

Specialist equipment

Other specialist equipment such as wheelchairs, bath seats, toilet frames etc may be available for loan or purchase from the local Red Cross loan centre. Please check this out before booking the Cottage and contact us if you require further information.

Future Plans to improve Access to NT Holiday Cottages

We are currently in the process of writing accessibility guides for all our holiday cottages and improving access over time for all our guests. All feedback is very helpful in informing us of ways in which we can improve access to all our cottages. We welcome any comments or ideas from you about access at this cottage and thank you for taking the time to do this. Please do this in the most convenient way for you. See contact details below or information on website.

<https://www.redcross.org.uk/get-help/borrow-a-wheelchair>

<https://www.redcross.org.uk/get-help/hire-a-toilet-aid>

About the Accessibility Guide

- This Accessibility Guide is intended to provide key information about the cottage that may be particularly relevant to guests with disabilities. Please contact us prior to booking if you would like information that is more specific and we will be happy to oblige.

Phone: 0344 8002070

Email: cottages@nationaltrust.org.uk

Access for All at the National Trust

- The Access for All office works to improve access at all National Trust cottages and properties. The office welcomes comments and ideas on improving access.

Phone: 01793 818531

Email: accessforall@nationaltrust.org.uk

February 2023