

National Trust Cottages Accessibility Guide

The Slipway
Moor Lane
Croyde, Baggy Point
Devon

South West Region

Cottage Ref: 011054



Introduction

- Comprising two levels The Slipway's main accommodation is situated above the National Trust Sandleigh Tea Room
- The cottage is heated by gas central heating – boiler in tea-room below
- It is furnished for four people
- There are level access walks from the cottage to Croyde Beach and for walks towards Baggy Point
- Wifi is available – this can be turned off

Pre-Arrival

- See the main webpage for booking and location details.
- Please contact us prior to booking if you have any specific access requirements
- Directions provided with booking

Approach

- Follow the B3231 from Braunton to Croyde then follow National Trust signs along Moor Lane to the Baggy Point car park. The lanes become narrow as you near Baggy Point and can be busy in high season.

Arrival & Parking Facilities

- There are two marked spaces for parking in the Baggy Point car park. There is no charge for parking in these spaces. The reserved spaces are close to the access gate through the wall to the Sandleigh Tea Room. During high summer the gate to the car park may be locked some nights and a combination lock fitted to it. A code to open the lock will be provided to guests in the pre arrival documentation.

Getting in (and out) of the cottage

- There is an access gate from the car park to the Sandleigh Team Room. The path to the cottage is level access until the entrance porch. It is also possible to access through the main gate entrance off the approach road to Baggy Point car park. Part of the route is covered by a PIR sensor light
- There is a key safe to the left of the porch door and another key safe is to the left of the front door to the cottage. Both key safes are operated by a combination lock mechanism. A torch is advisable if arriving in the dark. There is threshold step to enter the porch of 190mm
- There is a PIR sensor light in the enclosed porch area



Entrance gate from car park



Porch entrance to cottage

Getting around the cottage

- There is carpet throughout the cottage apart from the bathroom and kitchen which are non-slip wood effect vinyl

Ground floor

Shower Room

- The shower room is the only room on the ground floor and is immediately to the left on entering the cottage
- There are pull cords for the light switch and extractor fan to the right on entering
- The WC is 420mm high with push flush
- Low threshold (50mm) step-in shower. Fixed overhead shower head and adjustable rail mounted shower head. Twist tap controls
- The hand basin is 840mm high with a single lever tap
- Heated towel rail
- An adaptor point for shavers on wall
- Two ceiling recessed spotlights

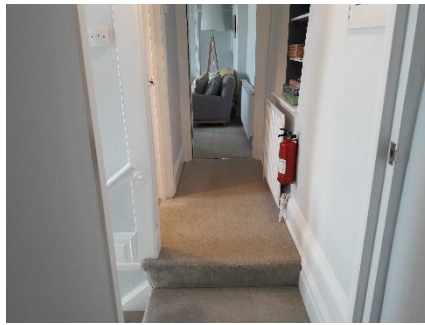


First floor

- The front door leads directly past the bathroom entrance to stairs to the landing with access to the living area. There are 13 steps each of 170mm. The handrail is to the left. At the top of the stairs the landing leads right with single step of 170mm to a double bedroom and left with single step of 170mm to the remainder of the accommodation



View to double bedroom



Top of stairs to sitting room



Stairs

Kitchen

- Electric cooker and hob (4 heat spots) with overhead extractor with light.
- The sink has lever taps
- Fridge with small freezer section.
- Microwave which sits on top of the fridge/freezer
- The height of the worktop is 940mm. There is storage below
- There is ample storage above the worktop
- There are 5 recessed LED spotlights



Living area

- Two sofas (one is three-seater and the other two-seater). Seat height is 370mm and seat depth 700mm
- 42inch TV with integrated DVD. Subtitles are available
- One dining table with four wooden chairs (no arms). Table height is 740mm and for the chairs is 460mm
- There is a free standing tall corner lamp between the sofas
- One low level coffee table
- Windows have children protection locks



Double Bedroom (to right at top of stairs)

- There is a 5 foot bed. Mattress height is 720mm
- There are bedside tables each with lamp, individually controlled
- Dressing table with 5 drawers and a stool. Seat height is 410mm
- One low level cane chair – seat height is 350mm
- Free standing tall mirror
- Wall mounted pegs with clothes hangers



Double Bedroom (through Living area)

- There is a 5 foot bed. Mattress height is 720mm
- There are bedside tables each with lamp, individually controlled
- Desk style chest of drawers with 6 drawers
- Free standing tall mirror
- Free standing hanging rail with clothes hangers – height 1550mm



Garden

The garden of the Sandleigh tea-room is level access and is available for use



Additional Information

- Assistance dogs are welcome at all our cottages



- In the event of a fire, it is the responsibility of the guests to evacuate themselves. Vibrating fire/smoke detectors are available if requested at time of booking. Please contact us if you have any other specific access requirements in this respect

Facilities at all cottages

In addition to the standard equipment and facilities, each cottage is equipped with the following:

- Cordless kettle
- Good reading light
- Non-slip mat for bath/shower
- Information in alternative formats (on request)

We aim to provide these items in all cottages but please check when booking as to their availability and to check if new items have been added to the list.

Specialist equipment

Other specialist equipment such as wheelchairs, bath seats, toilet frames etc. may be available for loan or purchase from the local Red Cross loan centre. Please check this out before booking the Cottage and contact us if you require further information.

<https://www.redcross.org.uk/get-help/borrow-a-wheelchair>

<https://www.redcross.org.uk/get-help/hire-a-toilet-aid>

Future Plans to improve Access to National Trust Holiday Cottages

- We are currently in the process of writing accessibility guides for all our holiday cottages and improving access over time for all our guests. All feedback is very helpful in informing us of ways in which we can improve access to all our cottages. We welcome any comments or ideas from you about access at this cottage and thank you for taking the time to do this. Please do this in the most convenient way for you. See contact details below or information on website.

About the Accessibility Guide

- This Accessibility Guide is intended to provide key information about the cottage that may be particularly relevant to guests with disabilities. Please contact us prior to booking if you would like information that is more specific and we will be happy to oblige.

Email: cottages@nationaltrust.org.uk

Phone: 0344 800 2070

Access for All at the National Trust

- The Access for All office works to improve access at all National Trust cottages and properties. The office welcomes comments and ideas on improving access.

Phone: 01793 818531

Email: accessforall@nationaltrust.org.uk

March 2023

