

National Trust Cottage The Old Club House Accessibility Guide

The Old Club House
The Duver
St Helens
PO33 1XZ

Ref 001007
Sleeps 5 + Cot
Adapted for Accompanied Disabled Guests
No Dogs



Introduction

- This wooden style chalet cottage, formerly the clubhouse for the Old Royal Isle of Wight Golf Links, offers a number of accessible features that will suit an accompanied disabled guest
- Far reaching views across the Duver to Culver Down to the south. St Helens Mill Pond to the southwest
- The cottage has gently sloped ramped at three points
- Open plan with good internal circulation in key rooms
- Entering via the kitchen to the sitting room. Access to both double room with en-suite, twin room an en-suite, single room and front door and Verandah
- Twin room has a large accessible en-suite level access shower room
- Open plan living area with access to a partially enclosed Verandah overlooking the Duver, a stretch of sand and shingle owned by the National Trust and frequented by seabirds and other wildlife.
- Partially enclosed Verandah affords wonderful views in all weathers
- Surrounding countryside is fairly level, access to shoreline and beach is reasonably good
- The village of St Helens is about a quarter of a mile from the cottage and has a range of shops, pub, restaurant and medical centre
- The Old Club House is situated about 10 minutes walk from the number 8 Southern Vectis bus route from Ryde to Newport via Sandown
- No WI-FI. Telephone signal is reasonable

- Heating is provided by storage heaters with additional electric towel rails in the bathrooms
- The cottage is decorated in neutral creams and light beige with highlights of soft sea greens
- Crockery is royal blue and white

Pre-Arrival

- See the main webpage for booking and location details
- Please contact us prior to booking if you have any specific access requirements
- Directions provided with booking

Approach, arrival and parking

- The cottage is reached from the B3330 turning off onto Duver Road and following a tarmac road downhill, following the road round to the right at the bottom (becoming single track). The cottage is situated on the right-hand side.
- Gravelled car parking area is accessed by double wooden gates 6ft wide with a lift-over closure
- Side gate accessed from the road 100cm high 4ft wide with a metal latch
- The garden is fenced by a low hedge on three sides and stock fencing. Picket fence with gates to the roadside on the eastern boundary
- Outside lighting above kitchen door



Getting in (and out) of the cottage

- Two-sided slope to the kitchen door
- Key safe located to the right-hand side of the door at 140cm high
- Verandah accessed via slope on the eastern side from road and from western side from the garden
- Verandah surface is concrete
- Verandah has two large, glazed panes to the front of the front door
- Verandah slope to the western side has a handrail at 72cm which continues along the Verandah. Steps to the grass of varying height. Top height of slope to grass 54cm
- Outside light situated on the western side of the cottage above slope
- Outside light situated above front door



Getting around the cottage

Sitting Room

- Entering from the kitchen, Fire door with automatic closure and foot peg. 81cm wide. Handle is a twist oval knob style
- Light switch on right hand side with the fire alarm control switch at 130cm high
- To the left-hand side is a small side table 69cm high 54cm wide and 30cm deep contains small draw and cupboard
- Table lamp with switch at the neck under lampshade
- Sofa 1: 160cm wide, 100cm depth, back 90cm height, arm height 60cm seat height 44cm
- Sofa 2: 120cm wide, 100cm depth, 90cm back height, arm height 60cm, seat height 44cm
- Chair, width 86cm, 66cm depth, back height 98cm, arm height 60cm seat height 46cm
- Wooden free standing bookshelf 116cm high, 117cm wide 34cm depth. Containing books and games
- TV 32" with integrated DVD player housed on a side table with draw, 76cm high, 93cm wide. Glass top.
- Floor standing reading lamp
- Large storage heater x2
- Circular coffee table 69cm wide 50cm high
- Wooden dining table and 5 chairs. Chair seat height 43cm, width 40-44cm, depth 40cm, back height 90cm. No arms
- Double plug socket at 50cm high
- 2 traditional style, metal framed windows 97cm wide, south facing with good natural light, shaded by the Verandah
- Roman blind with chain on the right-hand side
- Double plug 50cm high
- Front door opens into the sitting room from the Verandah. Door 76cm wide, metal threshold 2cm, door handle at 100cm high, Yale style lock at 110cm high
- Door curtains on pole
- Outside light switch located on the left-hand side when exiting the sitting room onto the Verandah
- Large wall clock at ceiling height
- Side table 73cm high, 46cm wide
- Table lamp with switch at the neck under the shade
- Double plug socket 50cm high

National Trust

- Electric Dimplex 'Wood burner style' hard wired fan heater
- Pendant lighting
- Carpet flooring in a light beige
- Decorated in neutral creams with highlights of soft sea green with saltmarsh birds
- Good circulation space

Large sliding door to twin room



Kitchen

- Entering the kitchen from the back door, door opens into kitchen. Handle at 90cm high. Yale style lock at 100cm high. Half glazed wooden door, width 90cm, threshold step approx. 6cm
- Entering, light switch on the right-hand side at a height of 114cm. straight ahead is the door to the sitting room.
- On the left-hand side is a traditional metal paned window 9cm wide, north facing, good natural light.
- Roman blind, chain on the left-hand side
- Work surface to the left, 90cm high, 59cm depth in a L shape containing cupboard 72cm high, door 40cm width. No shelf
- Fire extinguisher wall mounted work top
- Washing machine, radio
- Set of 4 large cupboards. 60cm wide 2x 94cm high, 2x99cm high. Utility 1. Shelf at 172cm high, iron and board, spare bulbs, first aid kit, brushes and hoover.
- Unity 2. Consumer unit
- Peddle bin
- Lighting – 2 sets of 3 spotlights
- To the right-hand side on entering, fridge freezer 169cm high, 55cm wide, 54cm deep
- Microwave 700w
- Kitchen units comprising – 5 wall units, 1 x double doors 2x 40cm wide, shelves at 42cm high, 62cm high and 89cm high from the work top
- 1 single cupboard 50cm wide shelves at 42cm high, 75cm high
- Corner opening cupboard, 2 doors 30cm wide, shelves at 42cm 62cm and 89cm high
- 4 burner hob with electric fan over 83cm high from work surface
- Cordless kettle, toaster
- Sink and half sink with drainer 100cm wide 50cm deep
- Window, tradition pane with metal frame 95 cm wide, north facing, good natural light
- Roman blinds with chain on the right-hand side

- Oven power point
- Fire blanket and fire action plan
- Under counter units, double doors 2x40cm wide, 72cm high, shelf at 55cm high
- Single unit 72cm high 50cm wide 1 shelf at 55cm high
- Small cupboard 30cm wide 72cm high
- Set of 4 draws, 50cm wide 16cm high with swing handles
- Cupboard handles are decorative knob style
- Double electric oven housed in tall unit. Cupboard over oven at 175cm high, door 60cm wide 39cm wide
- Cupboard below oven 56cm high, 60cm wide, no shelf
- 2 hooks on back of door at 135cm high and 172cm high
- Wood effect vinyl flooring



Twin Bedroom & Accessible en-suite Shower room

- Large sliding door to twin room, 80cm open width, handle at 77cm, pulls to the righthand side
- Light switch on the left-hand side 115cm high
- Small wooden decorative chair- seat high 44cm, back height 90cm
- Double wall socket 30cm high
- Small wardrobe 167cm high, 48cm wide, 52cm depth, pole height at 161cm
- Window, traditional paned metal framed, south facing and shaded by the Verandah 145cm width
- Roman blinds with chain on the right-hand side
- Double socket 50cm high
- Bedside table 70cm high, 50cm wide, 34cm depth
- Table lamp with switch at the neck of the lamp under the shade
- 2 matching single beds with head and foot boards. Headboard 120cm Height, 90cm wide, 183cm length, mattress height 63cm
- Bed feet 4.5cm square
- Large storage heater
- Additional oil filled heater

National Trust

- Window, traditional paned metal framed, south facing with good light and shaded by the Verandah 145cm wide
- Roman blind with chain on the right-hand side
- Dressing table with 2 draws 76cm high, 84cm wide, 47cm depth
- Towel rail boost button 150cm high, shower power switch 130cm high, bathroom light switch 115cm high are all located on the left-hand side outside of the bathroom door
- Bedside table 70cm high, 50cm wide, 34cm depth
- Table lamp with switch at the neck of the lamp under the shade



Shower room (en-suite to twin room)

- Sliding door 83cm wide
- Door handle pulls to the right-hand side
- Entering the bathroom on the left-hand side is the heated towel rail, top height at 150cm
- Wall hook 165cm high
- Windows, traditional paned metal frame, frosted glass, west facing, good natural light
- Roman blind with chain on the left-hand side, 47cm wide
- Towel ring 85cm high
- **Shower** 2 bi-folding doors form the shower cubical, opening into a wet room style shower with a drain in the floor
- Cubical measures 100 x 80cm
- Pull down assistance rail 70cm long from the wall, 68cm high
- Wall mounted shower seat, seat height 50cm height, 32cm depth, 36cm wide
- Wall mounted assistance rail 66cm high located under the shower unit
- Shower unit at a height of 80cm high (bottom) 190cm max high (top)
- Wall mounted soap dish 130cm high
- Showerhead min height 126cm height 190cm max height
- Toilet pull down assistance rail, 85cm long, 68cm high
- Closed cup toilet with push button flush on the cistern top, 88cm high, seat height 48cm, width 36cm, depth 44cm
- Toilet roll holder, wall mounted at 86cm high
- Vertical assistance rail 80cm high bottom to 140cm high top,
- Large sink 98cm wide, 50cm depth, 77cm high, leg clearance 68cm
- Hot and cold mixer tap with lift handle
- Push plug
- Vertical assistance bars positioned both sides of the sink, bottom 81cm high, top 141cm high
- Large wall mirror 100cm high 60cm wide

- Ceiling light
- Window over toilet, traditional metal paned with frosted glass, 48cm wide, north facing
- Roman blind with chain on the right-hand side



Single room

- Entering from the sitting room, small twist knob style handle 125cm high, door opens into the bedroom
- Door 71cm wide
- Light switch on the left-hand side
- Wall light over bed and pendant ceiling light
- Bedside table 40cm high
- Single bed 200cm long, 90cm wide. Mattress height 55cm
- Bedhead 86cm high
- Wall mirror over bed
- Wooden wall hooks, set of 2 x3 hooks each, 170cm high
- Window, traditional pane, metal framed, north facing, good light
- Roman blind with chain on the right-hand side
- Small wood and wicker decorative chair, seat height 36cm, 40cm width, back height 70cm

- Cabinet – double doors under marble top, no shelves, 79cm high, 91cm wide, 46cm depth
- Double plug socket 50cm high
- Storage heater



Double Bedroom with en-suite Bathroom

- Entering from the sitting room, door opens into the bedroom, small round knob style handle 130cm high
- Light switch on the left- hand side on entering at 115cm high
- 2 bedside cabinets 76cm high, 34cm wide, 32cm depth with door and shelving
- 2 adjustable bed side lights, switch on the cable
- Mattress height 60cm, 200cm long 152cm wide
- Headboard at 116cm high
- To the right 2 hooks on the back of the door, height of 130cm and 185cm
- Built in wardrobe, handle at 110cm high, pole 155cm high, internal shelf at 160cm high
- Caretakers' cupboard
- Window, traditional pane and metal frames, south facing, shaded by the Verandah, 146cm wide
- Roman blind with chain on the right-hand side
- Chest of drawers 114cm high, 115cm wide, 54cm depth, containing 3 large drawers under 2 small
- Freestanding face mirror, positioned on the chest of drawers 37cm wide, 29cm high
- Wooden chair, seat height 45cm, seat width 43cm, seat depth 46cm, back height 110cm, arm height 70cm
- Large storage heater
- Window, traditional pane with metal frames, 145cm wide, east facing, good natural light
- Roman blind with chain on the right-hand side
- Wall mirror
- Double plug socket at 50cm height
- Door to bathroom
- On right-hand side, hot water boost button and bathroom light switch at 115cm high
- Left hand-side of towel rail is the towel rail boost button at 115cm high
- Towel rail switch on/off 50cm high
- Carpet flooring in light beige
- Pendant lighting
- Decorated in beige with soft sea greens and bird eggs print



Bathroom (En-suite to double room)

- Plastic rounds knob handle at 130cm high twist to open. Door opens into bedroom - towards you- 71cm wide
- Terracotta floor tiles
- Located on the right-hand side is the boiler cupboard and caretaker's cupboard
- East facing frosted window over bath 48cm wide
- Roman blind with chain on the left-hand side
- 5' bath with hot and cold pillar taps
- Wall mounted soap dish
- Handrail at 100cm from base of bath
- Sink with hot and cold pillar taps 56cm wide, 47cm depth, 84cm high
- Wall towel ring 100cm
- Toilet, cistern handle on the left-hand side at 100cm high
- Toilet seat height 44cm, roll holder wall mounted at 80cm high
- Frosted window over toilet, north facing, 48cm wide
- Roman blind with chain on the left-hand side
- Towel rail, 123cm high – floor to top-
- 2 hooks on the back of the door 133cm and 187cm high
- Ceiling light



Garden

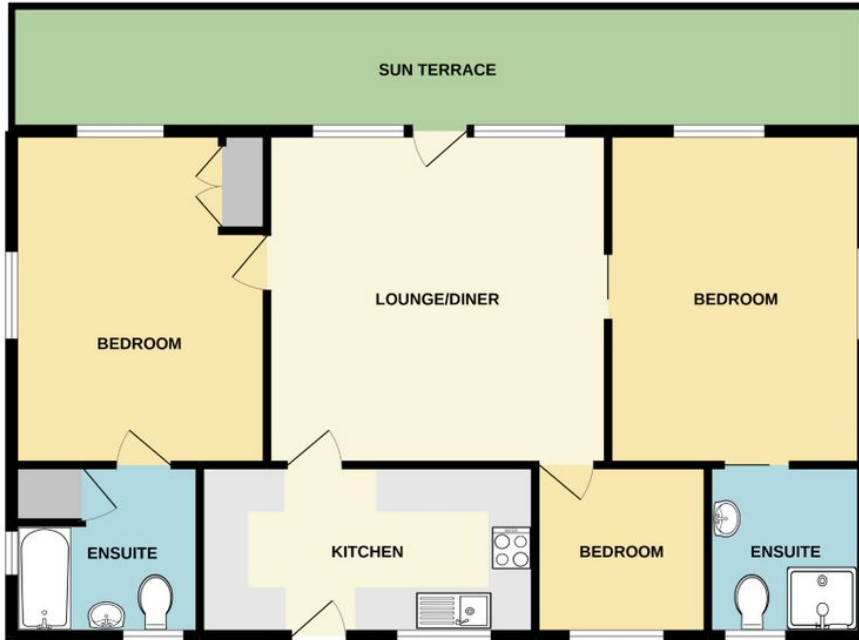
- Verandah has 1x bench, seat 42cm high, 89cm back height,
- Verandah round wooden table with four wooden chairs. Table height 74cm, 90cm wide. Chair seat height 44cm, 40cm wide, 46cm depth, back height 92cm, arm height 65cm
- Garden is laid to lawn with low hedging to three sides and picket fencing to the eastern boundary along the road

- There is a raised manhole cover and a concrete area in the lawn on the northern side of the cottage
- Concrete path 'steppingstones' to caretaker shed/store
- Rotary washing dryer
- Bin storage located at the main gate – General, Dry Mixed Recycling, Glass



Additional Information

GROUND FLOOR
919 sq.ft. (85.3 sq.m.) approx.



TOTAL FLOOR AREA: 919 sq ft. (85.3 sq m.) approx.
Whilst every attempt has been made to ensure the accuracy of the floorplan contained here, measurements of doors, windows, rooms and any other items are approximate and no responsibility is taken for any error, omission or mis-statement. This plan is for illustrative purposes only and should be used as such by any prospective purchaser. The services, systems and appliances shown have not been tested and no guarantee as to their operability or efficiency can be given.
Made with Metropix 02022

Facilities at all cottages

The National Trust aims to expand the list of accessible /equipment/items available at each cottage and these may include

- Cordless kettle
- Hollowfibre bedding
- Chair with armrests
- Good reading light
- Large handle vegetable peeler
- Easy tin opener
- Non-slip mat for bath/shower
- Non-slip place mat
- Easy jar opener
- Information in alternative formats (on request)

Please note that we cannot guarantee that all items will be available at the time of your visit. Please enquire at the time of booking regarding any particular requests.

Specialist equipment

Other specialist equipment such as wheelchairs, bath seats, toilet frames etc may be available for loan or purchase from the local Red Cross loan centre. Please check this out before booking the Cottage and contact us if you require further information.

<http://www.redcross.org.uk/standard.asp?id=89425>

Future Plans to improve Access to National Trust Holiday Accommodation

- We are currently in the process of writing accessibility guides for all our holiday cottages and bunkhouses and improving access over time for all our guests. All feedback is very helpful in informing us of ways in which we can improve access. We welcome any comments or ideas from you about access at this cottage and thank you for taking the time to do this. Please do this in the most convenient way for you. See contact details below or information on website.

About the Accessibility Guide

- This Accessibility Guide is intended to provide key information about the accommodation that may be particularly relevant to guests with disabilities. Please contact us prior to booking if you would like information that is more specific and we will be happy to oblige.
Email: cottages@nationaltrust.org.uk
Phone: 0344 8002070

Access for All at the National Trust

- The Access for All office works to improve access at all National Trust accommodation and properties. The office welcomes comments and ideas on improving access.
Phone: 01793 818531



Email: accessforall@nationaltrust.org.uk

Date June 2023