

# National Trust

## National Trust Longstone Cottage Accessibility Guide

Longstone Cottage  
Strawberry Lane  
Mottistone  
Isle of Wight  
PO30 4EB



Ref 001006  
Sleeps 6 + Cot  
2 Dogs

### Introduction

- A spacious, detached Edwardian Cottage, at the head of the Longstone Valley at Mottistone in an isolated spot. A short drive from Brighstone Village
- An off-grid cottage with no electricity, just solar. Gas cooker, gas fridge and 2 gas wall heaters. Wood burner provides main heating
- Water is not advised suitable for drinking
- Cottage is decorated in browns and creams with highlights of green
- Far reaching views of the countryside and a large garden, perfect location for a spot of stargazing
- Back door (main entrance) opens into the kitchen. Bathroom and toilet lead off the right-hand side. To the left hand-side is the sitting room and door to hall. Dining room and stairs. First Floor comprises 2 twin bedrooms and a double room
- All doorways both external and internal are a minimum of 73cm wide
- Heating is provided by 2 gas heaters (bathroom and dining room) and a wood burner with complimentary logs

- No Wi-fi available.
- Reasonable mobile phone reception
- The nearest number 12 Southern Vectis Bus service is located on the main road between Mottistone and Brighstone

## Pre-Arrival

- See the main webpage for booking and location details
- Please contact us prior to booking if you have any specific access requirements
- Directions provided with booking

## Approach, arrival and parking

- The cottage key must be collected from the National Trust Main Office, a lock box is located on the left-hand side of the front door
- Once the key has been collected, exit left into the single-track lane. Approximately 50 yards on the left is a small car park. Enter the car park and follow the unmade lane at the back.
- The track is an uneven and unmade. Please note it is shared with walkers and dogs and grazing cattle
- A gate at the bottom must be opened and closed.
- Follow the track for approximately ½ mile up hill. Longstone cottage is located at the end of the track.
- A gate must be opened to drive into the cottage grounds, and closed to keep the cattle out
- A large, gravelled parking area is located at the entrance to the cottage



## Getting in (and out) of the cottage

- Back door (main entrance) is 75cm wide with a 15cm concrete step and threshold into the kitchen
- An outside light above door
- Yale style lock, no handle on the outside
- Key safe located at National Trust Main Office



## Front Door

- The front door is accessed through the garden, over grass.
- 2 steps from the garden 16cm high into the porch, tiled flooring
- Steps 19 cm high lead up to the entrance, opening into a tiled porch



## Getting around the cottage

### Sitting Room

- Light switch located by both doors
- 2 Armchairs with 41cm seat height, 60cm arms, 90cm back height
- 1 Armchair with 46cm seat height, 56cm arms, 90cm back height
- Sofa with seat height 46cm, arms 60cm, back 90cm high
- Wood burning stove with tiled hearth and mantel over
- 2 wall lights
- Coffee table 46cm high
- Side table 46cm high
- Windows south and east facing with curtains on poles
- Wood floor with rug
- Decorated in green



## Kitchen

- Door opens into kitchen, fitted with a curtain and pole, yale style lock
- Water in this cottage is not advised as suitable for drinking due to being privately pumped to the property
- Light switch on the right-hand side
- Selection of wall and undercounter units, worktop height 92cm
- Sink with drainer, pillar taps
- Gas cooker 90cm high for hob and grill at 140cm high. 1 main oven and 4 gas burners
- Gas fridge 86cm high with a small capacity. Internal dimensions 23cm deep, 43cm wide, 46cm high. Small freezer compartment
- Kettle for use on gas hob
- No toaster – as no electricity
- Wood effect vinyl flooring
- 2 wall lights
- Fire action notice, blanket and foam extinguisher
- South facing windows with roman blinds
- Crockery in green and white
- Pantry off the main kitchen. Latch style handle, pendant light, tiled flooring, shelving. Small north facing window



## Dining Room

- Dining room table with 6 dining chairs, 49cm and table height of 72cm
- 2 armchairs with arm rests 40cm seat height, 56cm arm height
- 2 wall lights
- Decorative fireplace with decorative gas fire (not connected)
- 2 freestanding bookcases



- Gas wall heater
- Windows to the north and east with curtains on poles
- Wood flooring with rug



## Hall, Stairs & landing

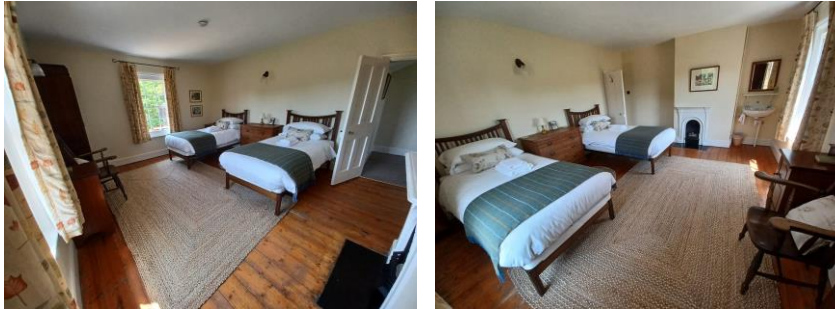
- Tiled flooring
- Emergency lighting, pendant lighting
- Coat hooks
- Light switch for upstairs landing and hall
- Stairgate fixed at bottom of the stairs
- Stairs, 13 steps which are carpeted, 19cm high 25cm tread
- Banister on the left-hand side 80cm high
- First floor landing is carpeted with a wooden balustrade at 80cm high running the length of the stairwell



## Twin Bedroom 1

- Light switch on the left-hand side
- 2 single beds with a mattress height of 60cm
- Bedside cabinet 68cm high
- Chest of drawers 80cm high
- Large freestanding wardrobe
- Decorative chair with seat height of 46cm high
- Side cabinet of 77cm high

- Decorative fireplace with mantel over
- Sink at 87cm high with pillar taps, mirror and small shelf over
- 2 wall lights
- Wooden floor with large rug
- Windows facing south and west, with curtains on poles



## Twin Bedroom 2

- 2 single beds 53cm mattress height
- Side table 70cm high
- Chest drawers 83cm high
- Decorative fireplace with mantel and mirror over
- Decorative chair 44cm high
- Large free-standing wardrobe
- Wood flooring with rug
- 2 wall lights (no lamps)
- Windows facing east and north with curtains on poles



## Double Bedroom

- Double bed with head and footboard and a mattress height of 67cm high
- Bedside cabinet 72cm high
- Chest drawers 82cm high
- Freestanding mirror
- Decorative fireplace with mantel over
- Decorative rocking chair 40cm seat height
- Wood flooring with rugs
- 2 wall lights
- Sink 87cm high with pillar taps and a small shelf over
- Windows facing south and east with curtains on poles



## Bathroom & WC

- **Lobby**
  - A step up 10cm into a small lobby leads off from the kitchen
  - Door 74cm wide
  - Bathroom on left hand-side with light switch outside door on left-hand side
  - WC located on the right hand-side with light switch outside door on left hand-side
  - Small window facing north with roman blind
- 
- **Bathroom**
  - Bath with 52cm high sides with handrails. Pillar taps with a shower attachment on taps
  - Basin 80cm high with pillar taps
  - Gas wall heater
  - 1 wall light
  - Window facing west with roman blind
  - Decorative chair with a seat height of 48cm
  - Tiled splashbacks
  - Location of gas boiler



- **WC**
- Light switch on the left-hand side

- Toilet with a seat height of 44cm high
- Flush handle
- Window facing north with roman blind



## Garden

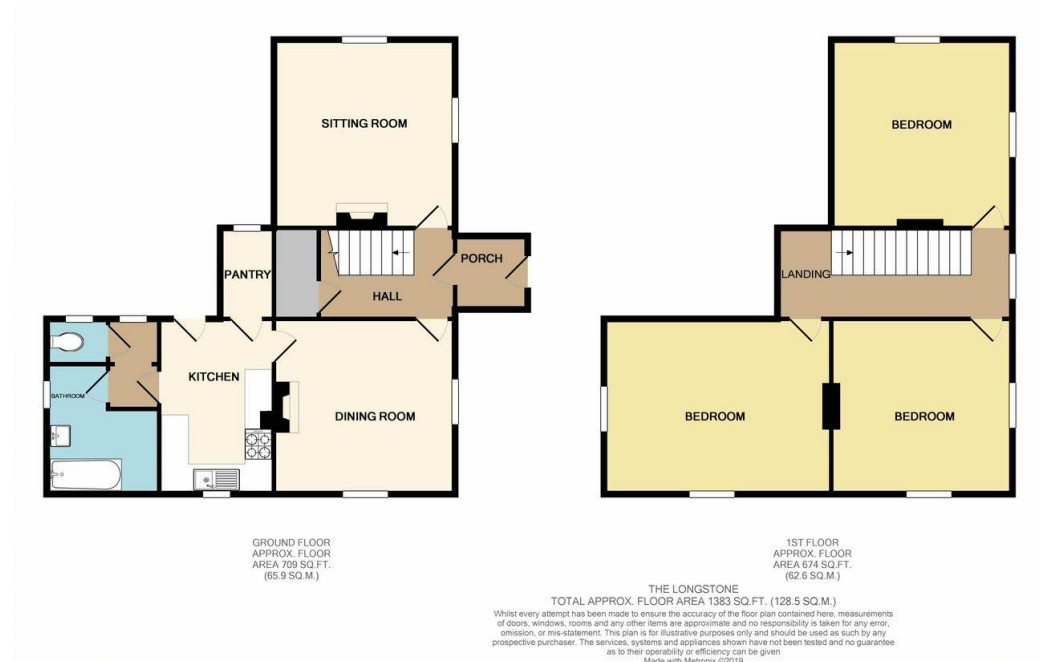
- Large garden runs around the cottage with shrubs and large trees. The site is sloping and uneven
- Log store is located in a separate brick outbuilding.
- Bin storage is located by the main gate - General, Dry Mixed Recycling, Glass



## Additional Information

- No mains electricity only solar- remember you will not have plug sockets and cannot therefore use items such as hairdryers, chargers, TV, radio or hoovers
- Isolated location. Tracks can be muddy in the winter and wellies are advised.
- Cottage key must be collected from the main National Trust Office (lock box)
- Limited heating – a wood burner provides the main heating
- A stock of water for drinking purposes is provided
- Gas fridge has a small capacity
- Cattle graze in area around cottage. All gates must be kept shut.





## Facilities at all cottages

The National Trust aims to expand the list of accessible /equipment/items available at each cottage and these may include

- Cordless kettle
- Hollowfibre bedding
- Chair with armrests
- Good reading light
- Large handle vegetable peeler
- Easy tin opener
- Non-slip mat for bath/shower
- Non-slip place mat
- Easy jar opener
- Information in alternative formats (on request)

Please note that we cannot guarantee that all items will be available at the time of your visit. Please enquire at the time of booking regarding any particular requests.

## Specialist equipment

Other specialist equipment such as wheelchairs, bath seats, toilet frames etc may be available for loan or purchase from the local Red Cross loan centre. Please check this out before booking the Cottage and contact us if you require further information.

<http://www.redcross.org.uk/standard.asp?id=89425>

## Future Plans to improve Access to National Trust Holiday Accommodation

- We are currently in the process of writing accessibility guides for all our holiday cottages and bunkhouses and improving access over time for all our guests. All feedback is very helpful in informing us of ways in which we can improve access. We welcome any comments or ideas from you about access at this cottage and thank you for taking the time to do this. Please do this in the most convenient way for you. See contact details below or information on website.

## About the Accessibility Guide

- This Accessibility Guide is intended to provide key information about the accommodation that may be particularly relevant to guests with disabilities. Please contact us prior to booking if you would like information that is more specific and we will be happy to oblige.  
Email: [cottages@nationaltrust.org.uk](mailto:cottages@nationaltrust.org.uk)  
Phone: 0344 8002070

## Access for All at the National Trust

- The Access for All office works to improve access at all National Trust accommodation and properties. The office welcomes comments and ideas on improving access.  
Phone: 01793 818531  
Email: [accessforall@nationaltrust.org.uk](mailto:accessforall@nationaltrust.org.uk)

Date June 2023