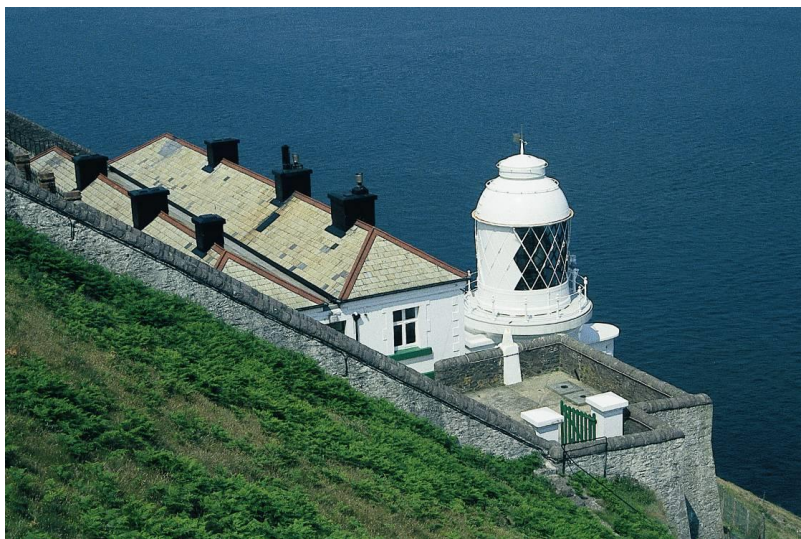


National Trust Cottages Accessibility Guide

Lighthouse Keepers' Cottage
Foreland Point
Lynton
Devon

South West Region



Cottage Ref: 012026

Introduction

- The Lighthouse Keepers' Cottage is furnished for 10 people. It is perched part way down the cliffs in splendid isolation with stunning views of the Bristol Channel and across to South Wales. From the coastal road it is approached by driving approximately 2 miles across National Trust moorland
- The narrow and partly rutted (1.8m wide) tarmac road, unfenced in places, is steep with several hairpin bends
- 58 steep steps lead from the car park to the cottage
- The cottage has air source heating and oil filled portable convector heaters if additional heating is required
- There is Wifi in the cottage and mobile reception is intermittent. On request it can be turned off. There is a pay phone in the cottage

Pre-Arrival

- See the main webpage for booking and location details
- Please contact us prior to booking if you have any specific access requirements

- Directions provided with booking

Approach

The drive down to the cottage is steep and exhilarating. It should not be attempted by nervous drivers. The road is narrow, with several sharp hairpin bends; great caution is required with extra care to be taken when using the road in the dark. Your arrival should be planned before darkness.



Arrival and parking facilities

- There is car parking for four vehicles in the car parking area
- The main entrance door to the cottage is approximately 100 metres from the car parking spaces. It is reached by opening a metal gate with a sliding bolt and walking down a gentle tarmac slope to the top of the flight of 58 granite steps
- There are several lights along the pathway from the gate to the front door with movement sensors which illuminate the path and the steps
- There is handrail to the right as descending the steps. There are two flat areas to rest on the descent/ascent. At the bottom the property forecourt is accessed via a wooden, latch gate
- The keysafe is on the post of the washing line opposite the front door. It is operated by a combination lock mechanism. A torch is recommended, especially if arriving in the dark, as the numbers on the lock can be difficult to see. The key inside will open the front door. Place key back in the keysafe before you go into the building. This way you will not lock yourself out



Path from car



steps



Front door

Getting in (and out) of the cottage

The door has a high concrete threshold (2 steps – total of 240mm) with a clear opening width of 900 mm.

There is an external light above the door. The internal corridor lights are on a sensor and will come on automatically as you enter the building.

All 12 rooms lead off the long, vinyl-tiled, level corridor which runs the length of the building

There is another exit door at the opposite end of the corridor with similar depth threshold.



Internal corridor

Overview

Ground Floor

- Shower and utility room (Boot Room)
- One landward single bedroom and one sea facing, double aspect single bedroom
- Two landward twin bedrooms
- Two sea facing double bedrooms
- Bathroom with separate shower and WC

- Landward facing kitchen with dining table
- Sea facing sitting room with TV and DVD
- Sea facing quiet room with small dining table and TV

Basement

- There is a shower room with WC and a utility room with washing machine and tumble dryer
- Games room with table tennis table

Getting around the cottage

Ground floor

- Level access throughout
- Vinyl flooring in most of the corridor and bathroom areas. Flagstone tiles in far end of the corridor
- Wood or tiled floors in the bedroom
- Tiled floor in the kitchen dining room
- Loose rugs in some rooms with anti-slip matting below
- There are no carpeted areas
- Internal door clear opening widths are 710 mm
- All lighting using white LED bulbs

Entrance porch

- 5 coat hooks at a height of 1700mm
- 2 rucksacks on the coat hooks

Shower and Utility room (Boot Room)

- Step-in shower with threshold of 170mm
- Washer dryer
- Sink with lever taps
- Fridge freezer
- Ironing board and iron
- Travel cot and high chair
- Multiple storage cupboards with shelves up to a height of 900mm



Bedrooms

Single Bedroom (Glenthorne) - Landward room with one window

- 1 x 3' iron bed- mattress height 550mm
- Bed side table and lamp
- Wooden chair, no arms
- One, two over three chest of drawers
- Two built in cupboard with open shelving.
- Rack for clothes hanging at height of 1600mm
- Full length curtains



Twin bedroom (Malmsmead) - landward facing window

- 2 x iron 3' beds -mattress height 700mm
- One, three drawer chest of drawers with one side lamp
- One, two over two chest of drawers opposite the beds
- Wooden chair – with arms
- Two, small mirrors above the dressing table
- Built in cupboards with hanging space and hangers. Height 2100mm
- Full length curtains
- Wooden flooring with rug in between beds



Twin bedroom (Countisbury) - landward facing window

- 2 x 3' beds with a table separating the beds. Mattress height 500mm
- One lamp on table between beds
- Three over two chest of drawers with two small mirrors above and with a lamp
- Wooden chair – no arms
- Two built in cupboards with hanging space with hangers. Height 2100mm
- Scatter rug between beds



Double bedroom (Lynmouth Bay) - sea facing with a view of the Light

- 1 x 5' iron bedstead. Mattress height 650mm
- 1 x small mirror
- 3 over two pine chest of drawers
- 2 x bedside tables with two bedside lamps
- 2 x scatter rugs by side of each bed
- 4 x hooks for clothes hanging at height of 1870mm
- Wheelback wooden chair – no arms
- Window with two wooden shutters. Child restrictors are fixed.



Double bedroom (Sandridge) - sea facing with a view of the Light

- 1 x 5' double bedstead. Mattress height 740mm
- Two bedside tables with lamps
- One, two over three chest of drawers
- One, small round mirror above
- One wooden chair without arms
- Window with two wooden shutters. Child restrictors are fixed. Two scatter rugs
- One built in cupboard for clothes hanging. Height 2100mm



Single bedroom (Foreland Ledge) - sea facing

- Double aspect room
- One seaward window with two wooden shutters. Child restrictors are fixed. This can be opened by using the key provided in the Welcome folder
- One side window with full length curtains
- 1 x iron 3' bed. Mattress height 530mm
- Two built cupboards with the base cupboards and top cupboards glazed
- Free standing towel rail
- One chest with four drawers with bedside lamp
- Wall mounted mirror
- 4 x wall mounted hanging hooks – height 1670mm
- 1 x scatter rug
- Radiator
- Electric fire (Dimplex mock wood burner)



Sitting Room – sea facing

- Double aspect room – windows with wooden shutters.
- Large sofa with corner unit with seating for 5-6. Seat height of 450mm and back cushions at a height of 500mm.
- Armchair: seat width 500; height 530mm, depth 600mm
- Several scatter cushions.
- Wall mounted 42inch TV with remote control.
- DVD player
- Quarry tiled flooring with scatter rug.
- Corner table and lamp.
- Corner lamp.



Quiet Room/ Small dining room - sea facing

- Round table with 4 upholstered chairs. Table height 720mm. Chairs 430mm
- One two-seater sofa scatter cushions – seat height 470mm
- One 26inch TV with remote control (on a table)
- Payphone
- One floor lamp.
- One pendant light
- Window with wooden shutters



Kitchen – cooking area

- Height of worktop is 910 mm from floor level
- Multiple storage area with shelves and drawers under work top area.
- Electric range oven with ceramic hob and overhead extractor – 5 x hot spots and 1 x warming
- Microwave, cordless kettle (x2), toaster
- Fridge freezer
- Dishwasher
- Lever taps to sink
- Radio – mains powered
- Multiple power sockets around work top area

- 6 pendant lights illuminate the room and task lighting is provided for the work surface
- Window by sink faces south providing natural light



Kitchen – dining area

- The dining area faces west with window overlooking the yard where the old oil tanks are situated.
- There are two pendants above the table
- The large table (height 780mm) has two benches and four chairs without arms.
- The knee clearance underneath the table is 600mm
- The wooden bench seating is 460mm from floor level
- There is limited circulation space



Bathroom

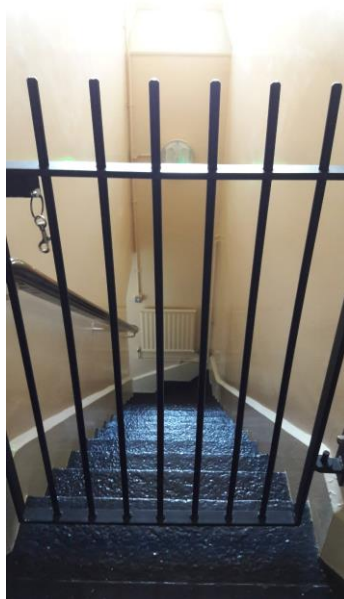
- Standard size bath with handgrips and turn taps. Small shelf recess area to right side. Bath is 560mm mm wide x 1400 long x 540mm high. Anti-slip mat for bath available
- Shower with a clear opening door measuring 670mm. Instep height 200mm
- Shower head height adjustable. Lever control for flow and turn control for temperature
- The WC is 410mm high

- Handbasin is 820mm with twist taps
- Mirror with light and shaver point
- Heated towel rail
- The room is lit with one ceiling light
- Seaward facing window with wooden shutters



Basement areas

There are two separate basement areas both are accessed by 16 steps with single wooden handrail to one side. The top of each stairwell is accessed via an iron grill gate secured with slide bolt.



Basement area with shower and WC and separate utility room

Shower room

- WC – height 400mm
- Shower with an opening door of 580mm and instep height of 220mm
- Handbasin is 820mm with twist taps
- Large wall mirror
- Heated towel rail
- Radiator
- Seaward facing large window



Utility room

- Washing machine
- Tumble dryer
- Sink with twist taps
- Ceiling mounted, adjustable height clothes dryer



Basement area – games room

- Table tennis table 5' x 9' with bats and balls
- 1 x sofa
- 3 x small round tables
- 2 seaward windows
- External access door to walled terraced area.

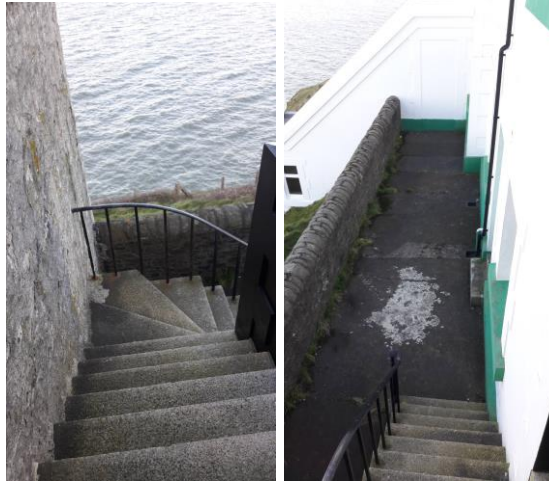


Outdoor space

The large yard area has a table, a washing line and stunning views



It is possible to access a lower terrace (same level as basement rooms). Access is at either end of the cottage via 16 steps with a 90 degree turn. There is no protective gate at the top of each set of steps.



Additional Information

- Assistance dogs are welcome at all our cottages
- In the event of a fire, it is the responsibility of the guests to evacuate themselves. Vibrating fire/smoke detectors are available if requested at time of booking. Please contact us if you have any other specific access requirements in this respect.

Facilities at all cottages

In addition to the standard equipment and facilities, each cottage is equipped with the following:

- Cordless kettle
- Chair with armrests in dining room and sitting room.
- Good reading light
- Large handle vegetable peeler
- Easy tin opener
- Non-slip mat for bath/shower
- Hollowfibre duvets and pillows
- Information in alternative formats (on request)

We aim to provide these items in all cottages but please check when booking as to their availability and to check if new items have been added to the list.

Specialist equipment

Other specialist equipment such as wheelchairs, bath seats, toilet frames etc may be available for loan or purchase from the local Red Cross loan centre. Please check this out before booking the Cottage and contact us if you require further information.

<https://www.redcross.org.uk/get-help/borrow-a-wheelchair>

<https://www.redcross.org.uk/get-help/hire-a-toilet-aid>

Future Plans to improve Access to NT Holiday Cottages

- We are currently in the process of updating accessibility guides for all our holiday cottages and improving access over time for all our guests. All feedback is very helpful in informing us of ways in which we can improve access to all our cottages. We welcome any comments or ideas from you about access at this cottage and thank you for taking the time to do this.

Please do this in the most convenient way for you. See contact details below or information on website.

About the Accessibility Guide

- This Accessibility Guides is intended to provide key information about the cottage that may be particularly relevant to guests with disabilities/impairments. Please contact us prior to booking if you would like information that is more specific and we will be happy to oblige.

Phone: 0344 8002070

Email: holiday.enquiries@nationaltrust.org.uk

Access for All at the National Trust

- The Access for All office works to improve access at all National Trust cottages and properties. The office welcomes comments and ideas on improving access.

Phone: 01793 818531

Email: accessforall@nationaltrust.org.uk

July 2023