

National Trust Cottages Accessibility Guide

Bosveal
Bosloe,
Mawnan Smith,
Falmouth,
TR11 5JR

Ref: 011051



Introduction

Bosveal is a two storey apartment occupying the central wing of Bosloe House. The main rooms have views over lawns and meadows to the Helford River.

The apartment sleeps 10 and is arranged as follows:

Ground Floor

Entrance porch, hall, staircase, W.C., dining room, kitchen / breakfast room, lounge, single bedroom, back staircase.

First Floor

5 bedrooms: 1 master bedroom with en-suite, 1 double and 1 twin (shared en-suite), 1 twin bedroom, 1 single bedroom, shower room and a family bathroom.

Designated garden area with garden furniture and barbecue available.

Pre-Arrival

- See the main webpage for booking and location details
- Please contact us prior to booking if you have any specific access requirements.
- Directions are provided with booking
- Bring a torch if arriving in the dark as there are no streetlights on site and a torch is useful to see the keysafe combination lock numbers.

Approach

- Bosloe House is located at the bottom of a gravel drive within gardens. Bosveal is the apartment in the middle of the house and can be accessed by turning right where the driveway splits.



Arrival & Parking Facilities

- There is a level parking area immediately outside the house and the entrance door to Bosveal.
- The forecourt is illuminated via a sensor activated external light.
- The keysafe is on the side of the log-store around the corner from the Stable Flat.



Shared parking area for Chatham and Bosveal



Stable flat with keysafe on logstore shown

Getting in (and out) of the cottage

Front Door into entrance porch

- Low lip (2cm) from level parking area onto step of 8cm.
- Door solid wood (130cm wide) opens into spacious entrance porch.
- Second part-glazed door to hallway (86cm wide)
- Quarry tiled floor
- Bench (55cm H)
- Wall-mounted coat hooks
- Wooden storage unit (84cm H)
- Auto sensor central light



The floors are carpeted in the bedrooms, corridors, hallway, stairs, lounge and dining room. There is high quality vinyl flooring in the bathrooms, kitchen and W.C.s. Heating is by radiators.

Getting around the cottage

Ground Floor

Entrance Hall

- 3 doors to other rooms
- 2 upright wooden chairs
- 1 wooden oval table
- Decorative fireplace
- 1 wooden chest
- Large windows lighting hall, stairs and landing
- 3 ceiling lights
- Level access throughout ground floor – except for 20mm lip to W.C.
- 22 stairs (all 16cm high) to upper floor with three small landings.
- Fitted stairgate
- Low banister rail (78cm H)
- Radiator



Second Hall with rear staircase

- Door 86cm wide
- 2 doors to other rooms – plus locked door to Court apartment, 71cm wide
- Rear staircase 87cm wide with 20 stairs (16cm high) with 3 small landings. On top landing wooden half-moon table and chair (seat height 45cm) and emergency access to Court apartment.
- Large window on stairway with deep sill overlooking parking area
- Ceiling light
- Fitted stairgate
- Banister rail 84cm high with small gap for window

W.C.

- Wooden door is 88cm wide
- Heated towel rail
- Washbasin 77cm high
- Lit mirror over basin
- W.C. 42cm high
- Ceiling vent
- Central ceiling light



Dining Room



- 2 doors from hall both 88cm wide
- 2 ceiling lights with 7 bulbs in each
- 2 standard lamps
- 4 spotlights fitted in to ceiling
- Rear wall windowed with 4 window seats (45cm high), rear part glazed door (87cm wide). All overlooking gardens with river views.
- Wooden dining table 334cm long x 111cm wide x 75cm high (knee clearance height 59cm)
- 12 Wooden dining chairs (seat height 44cm and depth 42cm)
- 2 radiators
- Carbon monoxide alarm
- Hard wired fire alarm

National Trust

Kitchen



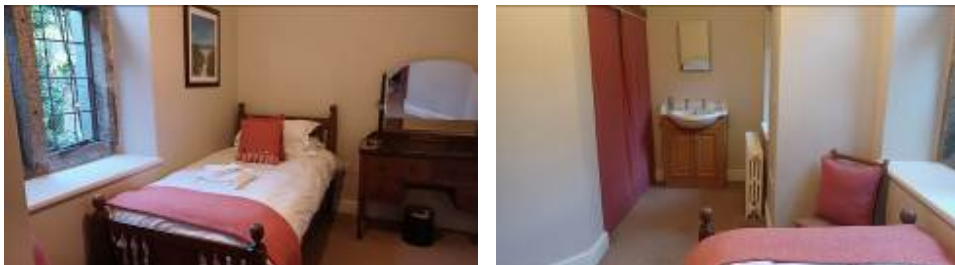
- Door from dining room is 89cm wide
- 6 dropped ceiling lights
- Strip lights under kitchen cupboards
- Cooker hood light and extractor
- Worktops 93cm high
- Central kitchen 'island' with cupboards underneath
- Everhot 90i with two ovens (roasting and slow cooking), cast iron hot and simmer plates and induction hob with two zones. The top of the cooker is 90cm from the floor.
- Large fridge / freezer
- 6 slice toaster, 2 cordless kettles, microwave
- Dishwasher
- Washer / tumble dryer
- Radio and CD player
- Wall mounted TV
- Octagonal wooden table (78cm high, knee clearance 61cm)
- Under window bench seating 52cm high and 39cm deep
- 2 wooden armchairs (45cm seat height and depth 43cm)
- Side window – all windows overlooking gardens and river
- Hard wired fire alarm
- Radiator

Sitting room



- Door from dining room is 88cm wide
- 2 ceiling lights, 2 standard lamps and 2 table lamps
- Large window with deep sills overlooking Helford River and gardens.
- Fireplace with log burner
- 2 large sofas (210cm wide, 48cm seat height)
- 1 two-seater sofa (44cm seat height)
- 2 upholstered footstools (47cm wide x 100cm long x 33cm high)
- Wooden coffee table (198cm long x 76cm wide x 46cm high)
- Nest of tables
- Small round table
- Small rectangular side table (69cm high)
- 42-inch TV and DVD player on a wooden chest
- 1 wall mounted mirror
- Carbon monoxide monitor
- Hard wired fire alarm
- 2 Radiators
- Rear door to garden is 88cm wide
- Door to inner hall is 88cm wide

Single Bedroom



- Door from hallway is 83cm wide
- Ceiling light
- Bedside lamp
- 2 windows overlooking driveway
- Washbasin 86cm high, shaver point integrated into lit mirror and storage underneath
- Single bed (65cm high x 200cm long x 100cm wide)
- Wooden dressing table with 4 drawers
- Curtained clothes hanging area – rail height 187cm with 6 hangers
- Small wooden chair (43cm high width seat depth of 33cm)

Central Landing



- 3 ceiling lights
- 2 doors to further landings are both 89cm wide
- Radiator
- Stairgate at top of staircase

***Cleopatra* (double bedroom with shared Jack-and-Jill ensuite)**

- Door from landing is 81cm wide
- 1 ceiling light
- 2 bedside lamps
- 1 deep sill window overlooking gardens and Helford River
- 1 double bed 150cm wide x 200cm long x 60cm high
- 1 wooden bedside cabinet 82cm
- 1 wooden drop leaf table acting as bedside table 74cm
- Wooden chest of drawers with three full sized drawers and 2 half sized drawers



National Trust

- Built-in wardrobe with hanging rail and 12 hangers
- Wooden armchair seat height 47cm
- Radiator
- Fire alarm fitted to ceiling
- Wooden towel rail
- Door to ensuite is 81cm wide

Ensuite

- 2 ceiling lights operated by pull cord hanging 190cm from the ground
- 1 deep sill window overlooking gardens and Helford River
- Washbasin 83cm high – lit mirror with integrated shaver point
- W.C. seat 44cm high
- Shower cubicle with safety glass doors, mains shower, step up to shower cubicle 22cm high, door 57cm wide
- Heated towel rail
- Wooden chair with seat height of 47cm
- Ornamental fireplace
- Ceiling vent



Titania (twin bedded room)

- Door from landing is 81cm wide
- 2 ceiling lights
- 2 bedside lamps
- 1 large deep sill window overlooking gardens and Helford River, 1 small window overlooking gardens
- 2 single beds (70cm H x 200cm L x 100cm W)
- Large, mirrored wardrobe with 4 drawers, shelves and a hanging rail with 12 hangers
- Chaise lounge seat width 132cm, seat height 35cm
- 2 wooden bedside cabinets 70cm high
- 2 upholstered armchairs, seat heights 35cm
- Radiator
- Ornamental fireplace
- Hard wired fire alarm



Redinha (Family Bathroom)

- Door from landing is 80cm wide
- Locked fire door to east wing
- 3 ceiling lights
- Ceiling vent
- High windows
- Wood surround W.C. seat is 43cm high
- Washbasin is 83cm high
- Shaver mirror
- Freestanding bath 67cm high x 174cm long x 60cm at narrowest point and 80cm at widest point
- Radiator
- Ornamental fireplace
- Heated towel rail



East landing

- 1 ceiling light
- 6 doors – 3 functional room doors, 2 storage cupboards and 1 doorway back to main landing
- Door to back staircase is 79cm wide

Amphitrite (twin bedded room)

- Door from landing 80cm wide
- 1 ceiling light
- 2 bedside lamps
- 2 windows with deep sills overlooking driveway
- 2 single beds 70cm high x 200cm long x 100cm wide which can be pushed together on request
- 2 wooden bedside cabinets (73cm high and 75cm high)
- Wooden mirrored wardrobe with hanging rail and 12 hangers
- Wooden chest of drawers 105cm high with 5 drawers
- Small upholstered chair with seat height of 30cm
- Radiator
- Ornamental fireplace

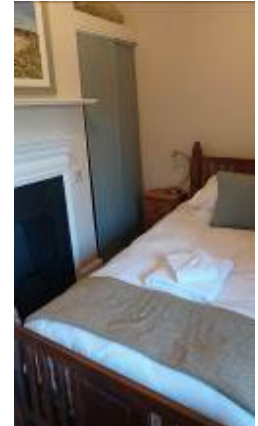


West landing

- 1 ceiling light
- 5 doors – 3 to functional rooms, one back to main landing area and one leading to rear staircase

Iseult (single bedroom)

- Door from landing is 81cm wide
- 1 ceiling light
- 1 bedside lamp
- 1 deep sill window overlooking driveway
- Single bed 70cm high x 200cm long x 100cm wide
- Wooden chest of drawers with 4 drawers
- Wooden bedside cabinet 61cm high
- Curtained clothes hanging area – rail height 193cm high with 6 hangers
- Radiator
- Ornamental fireplace



Morwenna (Shower room)

- Door from landing is 81cm wide
- Ceiling light
- Mirror with light and shaving point
- Small radiator
- Heated towel rail
- Washbasin (83cm high)
- Shower cubicle with bi-folding safety glass door, step up of 25cm in to shower tray
- Electric shower unit



Semiramis (master bedroom)



- Door from landing is 81cm wide
- 2 ceiling lights
- 2 bedside lamps
- Long deep sill window overlooking gardens and Helford River
- Canopied double bed (77cm high x 200cm long x 153cm wide)
- Built-in wardrobe 67cm high x 38cm wide with hanging rail
- Very large freestanding wooden mirrored wardrobe / chest of drawers – integrated hanging rails with 12 hangers provided
- Chaise lounge with seat height of 45cm
- 2 wooden bedside tables 65cm high and 69cm high
- Wooden towel rail
- Folding changing screen
- Two radiators
- Door to ensuite is 81cm wide

Ensuite

- 3 ceiling lights
- Deep sill window overlooking gardens and Helford River
- W.C. seat is 44cm high
- Washbasin 84cm high with lit mirror and shaver point
- Wooden chair 43cm seat height
- Shower cubicle with safety glass doors, mains shower, step up to shower cubicle 22cm high, door 57cm wide
- Heated towel rail
- Ornamental fireplace



Garden

- Door from dining hall opens onto a quarry-tiled veranda with a garden bench. Four steps lead down to the shingled terrace
- Wooden table (275cm long x 125cm wide x 74cm high – knee height 68cm) and 10 metal chairs (seat height 45cm) and two wooden benches on veranda.
- The lawned area is flat but access is down two flights of steps (10 steps, and then 6 steps all 15cm). There is a level access concrete path round the side of the house leading into the garden.
- There is access from the garden on to the Southwest Coast path



Additional Information

Facilities at all cottages

The National Trust aims to expand the list of accessible /equipment/items available at each cottage and these may include

- Cordless kettle
- Hollowfibre bedding
- Chair with armrests
- Good reading light
- Large handle vegetable peeler
- Easy tin opener
- Non-slip mat for bath/shower
- Non-slip place mat
- Easy jar opener
- Information in alternative formats (on request)

Please note that we cannot guarantee that all items will be available at the time of your visit. Please enquire at the time of booking regarding any particular requests.

Specialist equipment

Other specialist equipment such as wheelchairs, bath seats, toilet frames etc may be available for loan or purchase from the local Red Cross loan centre. Please check this out before booking the Cottage and contact us if you require further information.

<https://www.redcross.org.uk/get-help/borrow-a-wheelchair>

<https://www.redcross.org.uk/get-help/hire-a-toilet-aid>



Future Plans to improve Access to National Trust Holiday Accommodation

- We are currently in the process of writing accessibility guides for all our holiday cottages and bunkhouses and improving access over time for all our guests. All feedback is very helpful in informing us of ways in which we can improve access. We welcome any comments or ideas from you about access at this cottage and thank you for taking the time to do this. Please do this in the most convenient way for you. See contact details below or information on website.

About the Accessibility Guide

- This Accessibility Guide is intended to provide key information about the accommodation that may be particularly relevant to guests with disabilities. Please contact us prior to booking if you would like information that is more specific and we will be happy to oblige.
Email: holiday.enquiries@nationaltrust.org.uk
Phone: 0344 8002070

Access for All at the National Trust

- The Access for All office works to improve access at all National Trust accommodation and properties. The office welcomes comments and ideas on improving access.
Phone: 01793 818531
Email: accessforall@nationaltrust.org.uk

March 2023