

National Trust Cottages Accessibility Guide

**Trescore
Park Head
St Eval
Wadebridge
Cornwall**



Cottage Ref: 011047

Introduction

- Set just inland from Park Head and overlooking the secluded valley running down to Porth Mear cove, lies a traditional Cornish building. From its high vantage point, the house commands sweeping views over the surrounding countryside and down to the sea, and the lighthouse at Trevoze Head in the distance is a distinctive landmark. There is easy access to the coast path and a number of lovely coastal walks. Trescore is a two-storey cottage which is attached to Porth Mear Cottage another NT holiday cottage within easy reach of some of the finest stretches of coastline and beaches in North Cornwall.
- The cottage has air source heating with radiators throughout. There is a wood burning stove in the sitting room.
- In the event of power failure emergency lighting is provided on the landing and in the porch.
- There is a shared telephone in the locked laundry room.
- A sink is also provided in the laundry room for washing wet suits or muddy items.

The accommodation comprises the following:

Ground floor

- Porch/boot room, sitting room and kitchen.
- Stairs from sitting room to first floor.

First floor

- Double bedroom, single bedroom, bathroom with WC.

Pre-Arrival

- See the main webpage for booking and location details.
- Please contact us prior to booking if you have any specific access requirements.
- Directions provided with booking.

Approach

- Trescore is accessed from the B3276 coast road between Bedruthan Steps and Porthcothan. Off this Coast Road is a track to Park Head. At the entrance of this track is a National Trust sign. This single-track leads past a National Trust car park used by walkers heading for the Southwest coast path and the beach at Porth Mear Cove. At the end of this public car park is an open gateway signed “No access for vehicles.” A few metres past this gateway lie Trescore and Porth Mear cottages. Just past the cottages on the right are the car parking areas.
- Due to farm traffic and other vehicles, the tracks through the site and the communal parking areas can have potholes from time to time, so guests are asked to take care when moving through the site especially in poor weather conditions, at dusk and at night.
- From the coast road, the track is approximately 500 metres to Trescore.
- View showing car parking area and laundry room. The cottage front door in the picture is Porth Mear's.



Arrival & Parking Facilities

- Parking for one car is at the side of the cottage; the space is marked Trescore. There is a sensor light on the end of the building.
- The car parking area is uneven, partly grassed with some gravel.
- From the car park area walk along the lane a distance of approximately 50 meters to the cottage.
- There is a step down from the lane to the cottage gate.

- The gate into the cottage leads to the front door along a stone pathway a distance of approximately 3.5 metres.
- The key safe is to the right of the porch door at a height of 1480mm. It is operated by a combination lock mechanism, where the dials need to be turned to the cottage combination code. A torch is recommended, especially if arriving in the dark, as the numbers on the lock can be difficult to see.



Car parking area



Step down to cottage gate

Getting in (and out) of the cottage

- There is a small threshold of 40mm over the front door.
- The clear opening width of the door is 700mm less 60mm of lip on bottom.
- The door opens into a porch with another door into the cottage with a clear opening width of 750mm and an another small threshold of 40mm.
- The light switch is on the right-hand side at a height of 1350mm.
- There is no other access into the cottage.

Getting around the cottage

Ground floor

- The door widths around the cottage are a minimum of 700mm wide.
- Floor coverings are luxury vinyl in the kitchen and sitting room.
- There is also a large rug in the sitting room.
- There are no steps on the ground floor.
- Carpeted stairs with 10 treads and a wooden handrail on left hand side leading to small landing area. The width of the stairs is 730mm. The treads are 200mm deep.
- The handrail is on the left-hand side.
- There are built slot-in stair gates at both top and bottom of the stairs.



First floor

- One step of 200mm from each side of small landing area at top of the stairs, one leading to the main bedroom and one to the single room and bathroom.
- The bedroom floor coverings are carpet and there is vinyl in the bathroom.



Step to bedrooms and bathroom

Kitchen:

- Main light switch is to the right of kitchen door at a height of 1350mm.
- Four LED ceiling track spotlights, pendant light over dining table display lighting and under cupboard lighting.
- Two windows, one deeply recessed behind the sink with views over the fields down to the cove. The other with views of the garden and countryside.
- Height of worktop is 880mm from floor level.
- Dining table with knee clearance of 650mm, four kitchen chairs, no arms.
- Chairs have seat and back height of 450mm.
- Built in electric cooker with single oven, grill, and ceramic hob. Cooker hood with light.
- Stainless steel sink with single arm lever tap.
- Tall integrated Fridge freezer.
- Integrated dishwasher.

- Integrated washer dryer.
- Integrated microwave with controls at a maximum height of 1650mm.
- Electric kettle and toaster.
- Under stairs cupboard max head height of 1280mm and width of 600mm narrowing to 400mm.
- Radio.



Sitting Room

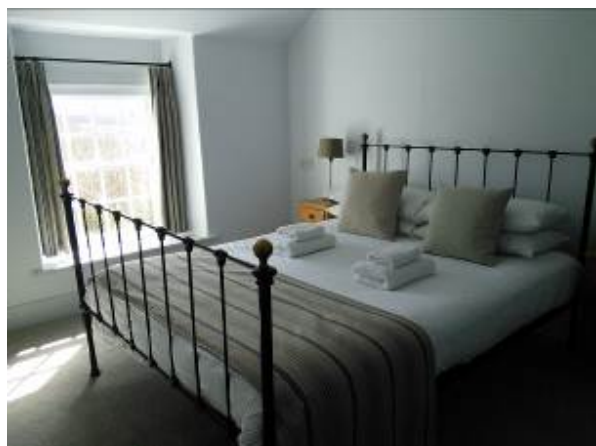
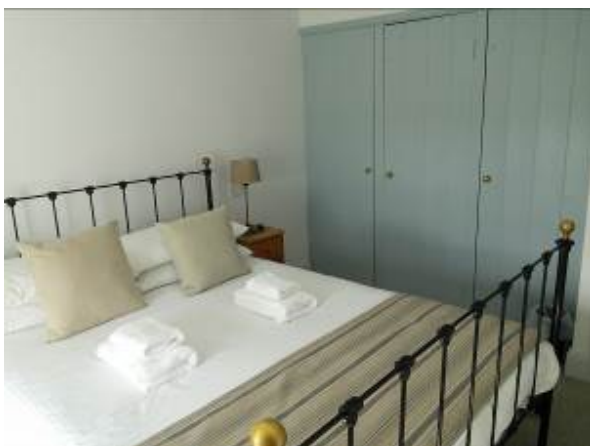
- Main light switch is to the right-hand side at a height of 1350mm.
- Lighting comprises three double arm wall lights. Floor lamp.
- Wood burning stove.
- Two-seater sofa with seat height 500mm and back height of 500mm.
- Two high back chairs with arms with a seat height of 400mm and back height 600mm.
- 28"TV with integrated DVD player.
- Small window with window seat 520mm and view of garden.
- Built in storage cupboard.





Double Bedroom

- Main light switch is to the right of bedroom door at a height of 1350mm.
- Central ceiling light with three shades.
- 5'1500mm bed, 560mm high and 2000mm long.
- Two bedside cabinets with bedside lamps.
- Four drawer chest of drawers with integrated mirror.
- Built in wardrobe with a hanging rail at a height of 1650mm.
- Wooden chair with a seat height of 420mm and a back height of 430mm.
- Low level window with view to garden.



Single Bedroom

- Main light switch is to the left of the bedroom door at a height of 1350mm.
- Central ceiling light.

National Trust

- Low level window with view to garden.
- 3' /900mm bed, 650mm high and 1900mm long.
- The bed is positioned with wall on one side.
- Built in wardrobe with a hanging rail at a height of 1830mm.
- Four drawer chest of drawers with bedside lamp.
- Wall mirror.



Bathroom

- Main light switch is on the landing to the left of the bathroom door.
- Three recessed LED ceiling spotlights.
- Standard size bath without handgrips.
- Shower over bath, with hand controls at a height of 1200mm.
- Bath is 500mm high, inside measures 400mm wide and 900mm long.
- WC is 400 mm high with push flush.
- Floor standing vanity unit with inset basin and soft close cupboards below.
- The hand basin has mixer lever taps and has a height of 870mm.
- Mirror and light over hand basin.



Garden

- There is a spacious garden to the rear and side of cottage. The rear garden adjoins that of Porth Mear Cottage. Although each garden is separate, there is a small gap in the hedge between the two, so neither is enclosed.
- There is a wooden garden table with knee clearance of 620mm and three-armed wooden garden chairs.
- The garden chairs have a seat height of 420mm and a back height of 400mm.



Garden area



Laundry room

Communal laundry room

- This is next to the parking for Porth Mear Cottage and Trescore
- There is an external light on a sensor
- There is also external lighting on the corner of Porth Mear Cottage
- There is a small step up into the laundry room
- The floor is covered in vinyl
- There is a washing machine, a washer/dryer and a sink
- There is a landline in this room for guests' use as the mobile signal is not good
- A WC accessible from the laundry room is for the use of staff and contractors



Additional Information

- Assistance dogs are welcome at all our cottages.
- In the event of a fire, it is the responsibility of the guests to evacuate themselves. Vibrating fire/smoke detectors are available if requested at time of booking. Please contact us if you have any other specific access requirements in this respect.
- Carpets are 80/20 wool/manufactured fibres.
- Duvets and pillows are made of hollowfibre.
- Cushions are hollowfibre.



Facilities at all cottages

In addition to the standard equipment and facilities, each cottage is equipped with the following:

- Chair with armrests in sitting room.
- Good reading light.
- Non-slip mat for bath/shower.
- Information in alternative formats (on request).

We aim to provide these items in all cottages but please check when booking as to their availability and to check if new items have been added to the list.

In Trescore, please pre-request a large handle vegetable peeler and an easy jar opener.

Specialist equipment

Other specialist equipment such as wheelchairs, bath seats, toilet frames etc may be available for loan or purchase from the local Red Cross loan centre. Please check this out before booking the Cottage and contact us if you require further information.

<https://www.redcross.org.uk/get-help/borrow-a-wheelchair>

<https://www.redcross.org.uk/get-help/hire-a-toilet-aid>

Future Plans to improve Access to National Trust Holiday Cottages

- We are currently in the process of writing accessibility guides for all our holiday cottages and improving access over time for all our guests. All feedback is very helpful in informing us of ways in which we can improve access to all our cottages. We welcome any comments or ideas from you about access at this cottage and thank you for taking the time to do this. Please do this in the most convenient way for you. See contact details below or information on website.

About the Accessibility Guide

- This Accessibility Guide is intended to provide key information about the cottage that may be particularly relevant to guests with disabilities. Please contact us prior to booking if you would like information that is more specific, and we will be happy to oblige.

Email: holiday.enquiries@nationaltrust.org.uk

Phone: 0344 800 2070

Access for All at the National Trust

- The Access for All office works to improve access at all National Trust cottages and properties. The office welcomes comments and ideas on improving access.

Phone: 01793 818531

Email: accessforall@nationaltrust.org.uk

April 2023