

**Rumps****Doyden House****Doyden****Port Quin****Nr Port Isaac****Cornwall****Cottage Ref: 011036****Introduction**

- Rumps is a first-floor apartment within Doyden House with far reaching views towards Pentire Headland. It is a light and airy apartment with deep windows and sea views.
- The apartment is heated by Air source central heating. There is an electric towel rail in the bathroom.
- There is also a wood burning stove in the sitting room.
- There is a telephone in the main hallway of Doyden House for emergency calls. Please note there is no mobile telephone signal.
- In the event of power failure emergency lighting is provided in the sitting room and hall of Rumps and in the hall and landing of Doyden House.
- Laundry Room in outside building next to Conor holiday apartment.

**The accommodation comprises the following:****First Floor**

- The apartment is on one level. The front door opens into the hall off which lead two doors, one to the sitting room with open wood burning stove and the other to the bedroom with an en-suite bathroom with shower over bath.
- The kitchen is off the sitting room.

# National Trust

- The double bed can be split into twin beds, upon request.
- The apartment is furnished for two people.
- This apartment is not suitable for children.

## Pre-Arrival

- See the main webpage for booking and location details.
- Please contact us prior to booking if you have any specific access requirements.
- Directions provided with booking.

## Approach

- The apartment is approached via a drive of one mile along country lanes. The entrance gates to Doyden House are held open. A short drive along a track sweeps into a large, level car parking area with several non-designated spaces.



## Arrival & Parking Facilities

- The level, gravelled car parking area is immediately adjacent to the main entrance. There is ample parking.
- There is a key safe to the right of the front door of Doyden House. The key safe is at a height of 1500mm.
- The key safe for Rumps is to the left of the front door at a height of 1270mm. Both key safes are operated by a combination lock mechanism, where the dials need to be turned to the cottage combination code. A torch is recommended, especially if arriving in the dark, as the numbers on the lock can be difficult to see.

## Getting in (and out) of the cottage

- There is a movement sensor light in the porch area.
- The main entrance door has a clear opening width of 750mm.
- There is a small iron strip threshold 20mm.
- There is a step down from the front door which is 150mm deep.
- The light switch is on the right-hand side at a height of 1380mm.
- The door opens onto coir matting and the staircase is ahead.
- The carpeted staircase has 18 easy treads with max depth of 170mm with a half landing lead to the apartment's front door.
- The stairs handrail is on the right-hand side at a height of 800mm from each tread.



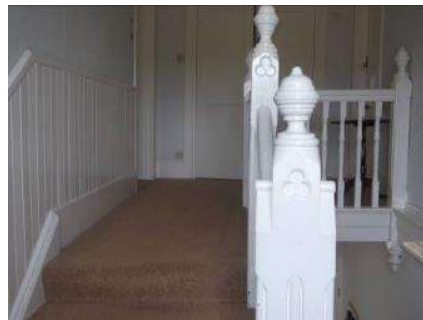
Doyden House entrance



Bottom of stairs



Stairs to half landing



Top of stairs



Rumps front door

## Getting around the cottage

### First floor

- Entrance hall, sitting room with wood burning stove. Kitchen with dining area, bedroom with en-suite bathroom and shower over bath.
- Level access throughout the cottage.
- Vinyl flooring in kitchen/dining area, bathroom, and hallway.
- Carpeted sitting room and bedroom.

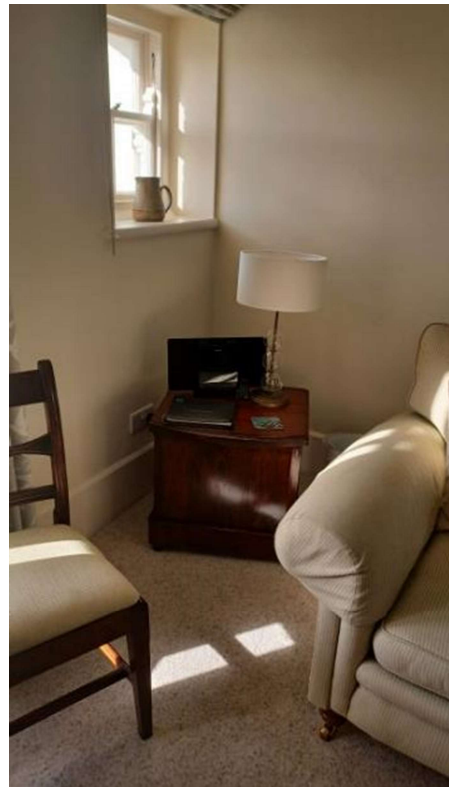
### Hall

- The thermostat for the air source heating is on the wall above the table at a height of 1250mm.
- Low table 440mm high with shoe rack underneath.
- Wall mounted coat rack with 6 hooks.



## Sitting Room

- Door clear opening width of 700mm.
- Main light switch by door to kitchen and door to sitting room they are 1480mm high.
- One centre light with 5 shades and one table lamp
- Large, deep window with coastal views.
- Two-seater sofa with seat height 450mm, back height of 520mm and armchair with a seat height of 430mm back height of 500mm.
- Wood burning stove.
- Folding dining table with clear knee clearance of 560mm when leaves are closed, 630mm when open.
- Two wooden chairs with a seat height of 440mm and a back height of 430mm.
- Circular side table 410mm high.
- Side table 510mm high.
- 32" TV with DVD player.
- Radio reception through TV.



## Kitchen

- Door clear opening width of 700mm.
- Main light switch left of kitchen door at a height of 1480mm.
- Four LED track spotlights in the ceiling, concealed lighting under wall units and lighting above dining area.
- Height of worktop is 920mm from floor level.
- Stainless steel sink with lever taps.

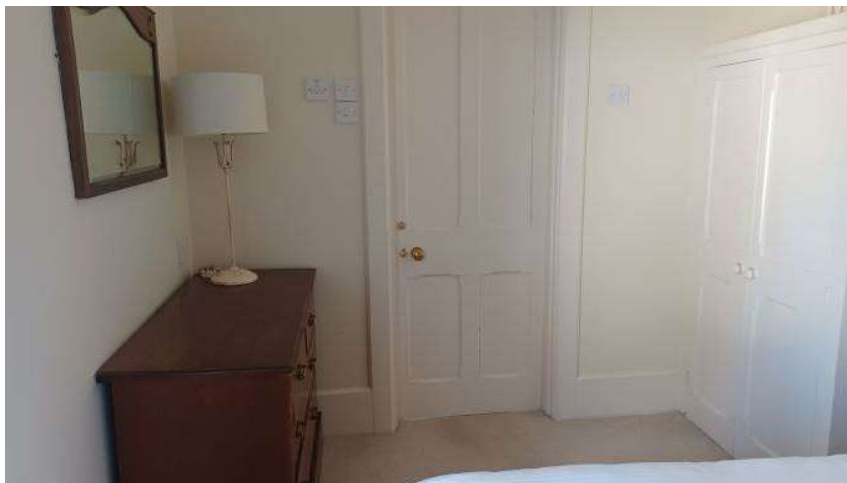
# National Trust

- Integral electric cooker with grill and ceramic hob. Extraction and light above cooker.
- Microwave and its controls are at a height of 1550mm.
- Fridge-freezer.
- Slim line dishwasher.
- Cordless kettle, toaster.
- Dining table with clear knee clearance of 620mm.
- Two wooden chairs with a seat height of 460mm and a back height of 460mm.



## Double Bedroom

- Door clear opening width of 700mm.
- Main light switch is left of bedroom door at a height of 1480mm.
- Centre ceiling light.
- 6'/1830mm double divan bed, which can be a twin on request, faces recessed window.
- Bed length 1900mm, bed height 650mm with a firm mattress.
- There is no clearance below the bed to the floor.
- Limited circulation around bed. Space between bottom of bed and window is 450mm at its narrowest point and 600mm at its widest.
- Four-drawer chest with table lamp
- Wall mirror over chest of drawers.
- Two bedside cabinets with bedside lamps.
- Built in wardrobe with hanging rail height of 1600mm.
- Wicker seated chair with a seat height of 420mm and a back height of 420mm.



## Bathroom

- Door clear opening width of 670mm.
- Light switch in bedroom to left of bathroom door at a height of 1400mm.
- The room is lit with one ceiling light.
- Level access to bathroom from bedroom.
- Very limited space to toilet.

# National Trust

- Standard size bath with handgrips and shower above bath. The shower is fed from hot water system and the controls are at a height of 1000mm.
- The bath has twist taps and there are handgrips integral to the bath.
- The bath base is part smooth and part anti-slip. At the shower end of the bath there is an anti-slip base for standing to shower.
- WC is 470mm high with lever flush.
- Height of stepping into bath is 570mm,
- Hand basin is 870mm high with mixer twist taps.
- Sensor mirror light over hand basin with shaver point on the left of mirror.



## Garden

- Doyden House has small lawned areas to the front and side.
- Shared wooden garden table and chairs.
- Open aspect with no secure area.





## Laundry Room

- There is a shared laundry room with washing machines and tumble dryers, located just off the car parking area.



Laundry Room

## Additional Information

- Assistance dogs are welcome at all our cottages.
- In the event of a fire, it is the responsibility of the guests to evacuate themselves. Vibrating fire/smoke detectors are available if requested at time of booking. Please contact us if you have any other specific access requirements in this respect.
- Carpets are 80/20 wool/manufactured fibres.
- Duvets and pillows are made of hollowfibre.
- Cushions are hollowfibre.

## Facilities at all cottages

In addition to the standard equipment and facilities, each cottage is equipped with the following:



- Chair with armrests in sitting room.
- Good reading light.
- Non-slip mat for bath/shower.
- Information in alternative formats (on request).

We aim to provide these items in all cottages but please check when booking as to their availability and to check if new items have been added to the list.

In Rumps, please pre-request a large handle vegetable peeler and an easy jar opener.

### **Specialist equipment**

Other specialist equipment such as wheelchairs, bath seats, toilet frames etc may be available for loan or purchase from the local Red Cross loan centre. Please check this out before booking the Cottage and contact us if you require further information.

<https://www.redcross.org.uk/get-help/borrow-a-wheelchair>

<https://www.redcross.org.uk/get-help/hire-a-toilet-aid>

### **Future Plans to improve Access to National Trust Holiday Cottages**

- We are currently in the process of writing accessibility guides for all our holiday cottages and improving access over time for all our guests. All feedback is very helpful in informing us of ways in which we can improve access to all our cottages. We welcome any comments or ideas from you about access at this cottage and thank you for taking the time to do this. Please do this in the most convenient way for you. See contact details below or information on website.

### **About the Accessibility Guide**

- This Accessibility Guide is intended to provide key information about the cottage that may be particularly relevant to guests with disabilities. Please contact us prior to booking if you would like information that is more specific, and we will be happy to oblige.  
Email: [holiday.enquiries@nationaltrust.org.uk](mailto:holiday.enquiries@nationaltrust.org.uk)  
Phone: 0344 800 2070

### **Access for All at the National Trust**

- The Access for All office works to improve access at all National Trust cottages and properties. The office welcomes comments and ideas on improving access.  
Phone: 01793 818531  
Email: [accessforall@nationaltrust.org.uk](mailto:accessforall@nationaltrust.org.uk)

April 2023