

National Trust Cottages Accessibility Guide

Penrhyn Mawr
Cemaes Bay
Anglesey
LL67 0LL
North Wales

Ref: 008037



Introduction

- This is a farm cottage adjacent to a small working farm.
- The cottage can accommodate four people.
- Heating and hot water is supplied by air source heat pump.
- There is a wood burning stove in the lounge.
- Hard standing parking for two cars is available at the front of the property.

The Cottage is arranged as follows:

Ground Floor:

- Lounge, kitchen, bathroom, and dining room.

First Floor:

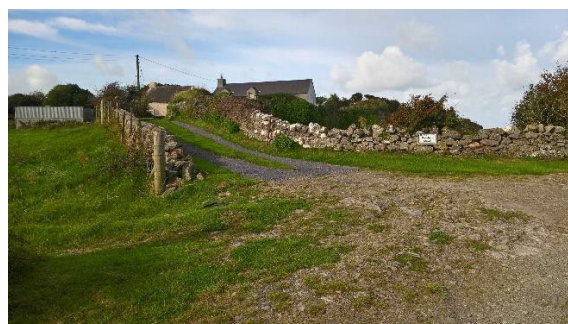
- One double and one single bedroom accessed from a flight of stairs off the lounge and an open plan bedroom accessed from another flight of stairs at the far end of the cottage.

Pre-Arrival

- See the main webpage for booking and location details.
- Please contact us prior to booking if you have any specific access requirements.
- Directions provided with booking.
- Bring torch if arriving in the dark as there are no streetlights here.

Approach

- Approach is from a minor “single track” road turning up an inclined gravel track that is uneven in places.



Arrival & Parking Facilities

- There is slate waste surfaced parking suitable for two cars at the front of the cottage. The key safe is a black box outside the front door to the left (as facing). It is operated by a push button mechanism. A torch is recommended, especially if arriving in the dark, as the numbers on the box can be difficult to see. The key is to be returned to the key safe on departure.



Getting in (and out) of the cottage

- The front door has a clear opening width of 72cm.
- The access to the front door is on a slope to the left.
- The highest part of the step is 9cm. There is a slate storm guard of 32mm at the threshold.
- There is also a door at the rear of the cottage (see **Garden**).



Getting around the cottage

Ground floor:

- Free access width of 77.5cm from the slate tiled entrance porch through to the living room. There is however a small trim measuring 16mm where the slates changes to the wood flooring of the living room.
- The internal doors on the ground floor consist of those to the rear porch, bathroom, and dining room. The free access widths: bathroom and rear porch 71.5cm, dining room 68.6cm
- Stairs leading from the living room to the two bedrooms on the first floor: Minimum free access width 65.5cm, minimum free access height 170cm. There are ten steps with three winders: Riser height 20cm, tread depth 25cm. Handrail height is 96cm.
- Head height above the chair under the stairs in the living room is approximately 165cm.
- Head height from the living room through to the kitchen is 181.5cm.
- There are five steps leading from the kitchen up to the corridor off which is the bathroom, dining room, rear porch, and stairs to day room. These are 85.5cm wide. Height of the risers are 18cm (with small raised beading on edges) with a tread depth of 30.5cm. There is no handrail and the minimum free access height is 169cm.
- Minimum width of the above mentioned corridor is 76cm at its narrowest (by the radiator).
- Stairs to open bedroom: There are ten steps, with three winders - risers 22cm, tread depth 25cm.
- The stairs to this bedroom encroach upon a small area into the dining room reducing head height at this point.



View of living room and front porch.



There is a fire door in place at the foot of the stairs.

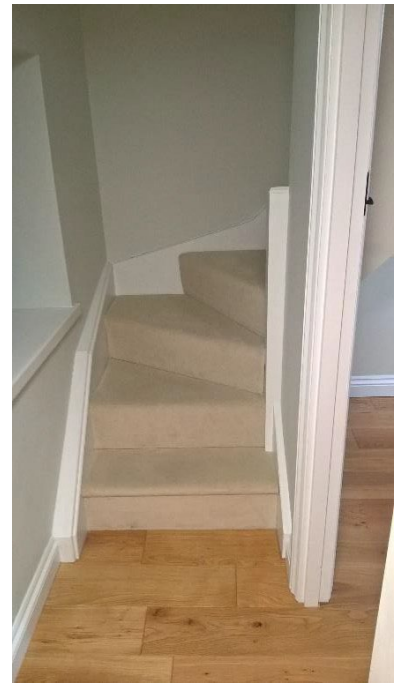
View of stairs and kitchen off living room and steps to bathroom.



View from top of steps from kitchen:
Bathroom door on the left, rear porch
ahead, entrance to passage leading to
dining room and stairs to the right.



View of dining room from rear porch.



Stairs to bedroom, no door.

- There are different floor coverings throughout as follows: Front and rear porch – tiles. Living room, kitchen, dining room, and passageways – wooden laminate. Bathroom – vinyl cushion flooring. Bedrooms and stairs are carpeted.

Living/Sitting Room

- One sofa with seat height of 48cm.
- One armchair with seat height of 46cm.
- Wood burning stove.
- Large rug covering floor in front of fireplace.

Kitchen

- Height of worktop is 89cm.
- Electric cooker with ceramic top and under hob grill.
- Fridge freezer.
- Microwave.
- LED lighting.
- Electric toaster and kettle.
- Washer/Dryer.

high by 48cm wide. Step height of 21.5cm.



Kitchen

Bathroom

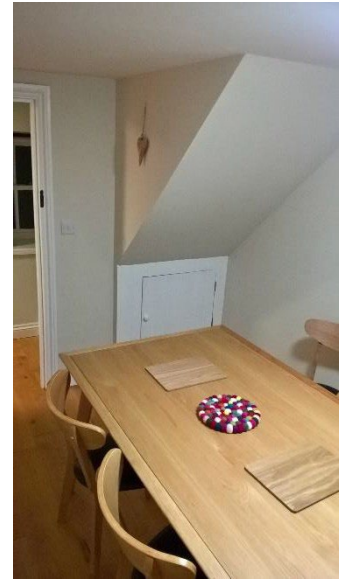
- WC, basin, enclosed glass panelled shower, and bath.
- The WC is 43cm high.
- The basin is 84cm high.
- Acrylic bath is 56cm high x 148cm long x 51cm wide (all dimensions are internal at their widest)
- Shower cubicle is 75cm x 78cm. Free access of 177cm



Bathroom

Dining Room

- Dining table with four chairs.
- Table height 71.5cm.
- Chair height 45cm.



Dining room

First floor (as accessed from living room):

- There is a small landing at the top of the stairs off which, to the left is the double bedroom and to the right is the single bedroom.
- Landing width is 97cm. Free access to double bedroom is 68cm. Free access to single bedroom is 71.5cm.
- All first floor rooms are in the roof space, therefore please bear in mind there is decreasing height and ingress or beams towards the outer walls.
- Stairs and first floor is carpeted throughout.



First floor landing.

Single Bedroom.

- The reproduction antique brass/iron bed is 56cm high x 91cm wide and 193cm long.
- Bedside table with lamp. Table height is 72.5cm.
- Chest of drawers.
- Low level sash window (front) and roof window (rear).
- Roof window catch height is 203cm.



Single bedroom.

Double Bedroom

- The reproduction antique brass/iron bed is 56cm high x 137cm wide x 193cm long.
- Bedside tables with lamp on each side. Height of both tables are 72cm.
- Chest of drawers and a chair.
- Height of chair is 46cm.
- Low level sash window (front) and roof window (rear).
- Roof window catch height is 216cm.

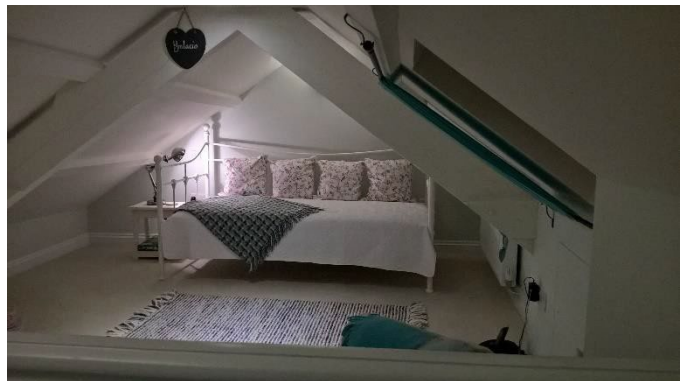


Double bedroom.

First floor (as accessed from dining room end):

Open plan bedroom above dining room.

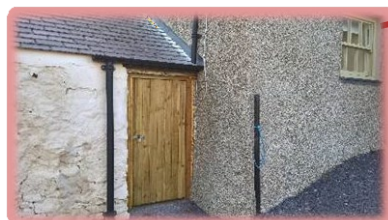
- The stairs lead up to a day/reading room. There is no door here. Both the stairs and room are fully carpeted.
- This room is in the roof space (with ample light from the roof windows), therefore please bear in mind there is decreasing height and ingress of beams towards the outer walls.
- Height at apex is 195cm, but this reduces to 160cm where the roof timber intrudes
- Window catch heights are 160cm.
- Day bed dimensions are: 48cm high x 193cm long x 94cm deep.



Day room

Outbuildings

- The only outbuilding that guests have access to is the boiler room - attached (on the left) to the cottage.
- There is a small steep slope (slate waste surface) leading through a five bar gate.



Boiler room - wooden door down slope to left.

Garden

- There is a large garden, uneven in parts and mainly lawn, to the rear of the property.
- Best accessed through the rear porch.
- Rear door free access width 73.5cm. Porch is 130cm wide by 152cm door to door.
- Step height in out of rear door is 20cm. There is also a slate storm guard of 32mm at the threshold.
- There is a slate waste level patio for use of the supplied wooden garden furniture: 1x table and 6x chairs. Table height is 76cm and chair heights are all 44.5cm each.
- A slate waste path runs along the rear of the property which includes four railway sleeper wooden steps.



Patio and path with railway sleeper steps.



View of garden.

Additional Information

- Assistance dogs are welcome at all our cottages.
- A dog can be accommodated here, Be warned, there are steep sections all around the cottage due to the former quarry.
- In the event of a fire, it is the responsibility of the guests to evacuate themselves. Vibrating fire/smoke detectors are available if requested at time of booking. Please contact us if you have any other specific access requirements in this respect.

Facilities at all cottages

The National Trust aims to expand the list of accessible equipment/items available at each cottage and these may include:

- Cordless kettle
- Hollow fibre bedding
- Chair with armrests
- Good reading light
- Large handle vegetable peeler
- Easy tin opener
- Non-slip mat for bath/shower
- Non-slip place mat
- Easy jar opener
- Information in alternative formats (on request)

Please note that we cannot guarantee that all items will be available at the time of your visit. Please enquire at the time of booking regarding any particular requests.

Specialist equipment

Other specialist equipment such as wheelchairs, bath seats, toilet frames etc. may be available for loan or purchase from the local Red Cross loan centre. Please check this out before booking the Cottage and contact us if you require further information.

<http://www.redcross.org.uk/standard.asp?id=89425>

Future Plans to improve Accessibility to National Trust Holiday Cottages

- We are currently in the process of writing accessibility guides for all our holiday cottages and improving access over time for all our guests. All feedback is very helpful in informing us of ways in which we can improve access to all our cottages. We welcome any comments or ideas from you about access at this cottage and thank you for taking the time to do this. Please do this in the most convenient way for you. See contact details below or information on website.

About the Accessibility Guide

- This Accessibility Guide is intended to provide key information about the cottage that may be particularly relevant to guests with disabilities. Please contact us prior to booking if you would like information that is more specific and we will be happy to oblige.

Email: cottages@nationaltrust.org.uk

Phone: 0344 8002070

Access for All at the National Trust

- The Access for All office works to improve access at all National Trust cottages and properties. The office welcomes comments and ideas on improving access.

Phone: 01793 818531

Email: accessforall@nationaltrust.org.uk

Date: November 2023