

## **National Trust Cottages Accessibility Guide Template (December 2023)**

Stackpole Granary  
Stackpole Quay  
Pembroke  
Pembrokeshire  
SA71 5LS

Ref: 013007



### **Introduction**

- Granary Cottage is situated near Pembroke on the Stackpole Estate which for many centuries was home to the Earls of Cawdor.
- Situated in one of the country's loveliest national parks, Stackpole has the most remarkable freshwater lakes, covered with water lilies in the summer.
- The cottages at Stackpole are, in the main, situated around a courtyard.

### **Pre-Arrival**

- See the main webpage for booking and location details.
- Please contact us prior to booking if you have any specific access requirements.
- Directions provided with booking



## Arrival & Parking Facilities

- A car park for all eight cottages is situated behind the Granary. It is not possible to park in the courtyard. From the car park access is either over a small slate slab or down three stone and slate steps (no handrail), each 19 cm high. Once out of the car park the path is gravel chippings.

## Getting in (and out) of the cottage

- Entrance from courtyard up six x 15 cm high stone steps
- Entrance step and threshold 9.5 cm high into kitchen, door 90 cm wide

## Getting around the cottage

Doorways minimum 69 cm wide however access to the single beds is narrow 38 – 47 cm wide. The Cottage is arranged as follows:

All accommodation on mezzanine level with steps down to lounge area from kitchen which overlooks the lounge

- Kitchen with electric cooker, fridge/freezer, dishwasher, toaster, microwave and cordless kettle
- Worktop 91 cm high
- Vinyl flooring
- Dining table has 72 cm clear space underneath. Dining chairs are 46 cm high
- 5 x 18 cm high steps plus 1 x 4 cm high step down to lounge area
- Stone floor and rug
- Wood burning stove
- One five-seater sofa 52 cm high, one armchair 45 cm high



(Dining room photo credit: Mike Henton)

Inner Hallway 81 cm wide from kitchen leading to bedrooms. Bathroom and extra WC

Carpet throughout with vinyl flooring in the bathroom

## Bathroom

- Bath, with shower over, 64 cm high, WC 39 cm high, basin 82.5 cm high

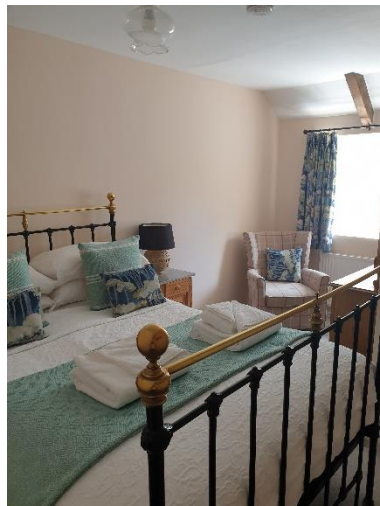


- Additional separate WC 41 cm high, basin 81 cm high

## Bedrooms

- Single bedroom with bed 90 cm x 190 cm x 65 cm high, bed against wall with 47 cm gap other side
- Twin bedroom with 2 single beds 90 cm x 190 cm x 65 cm high, gap past beds 36 cm wide
- Double bedroom with bed 135 cm x 190 cm x 72 cm high. Wooden chair 46 cm high. Armchair 46 cm high





(Photo credit above: Mike Henton)

**Left:** Single bedroom  
**Centre:** Main bedroom  
**Right:** Twin bedroom

## Telephone/Other Rooms

- There is a shared laundry situated between the cottage and the parking area, with washing machine and tumble drier. A drying area is situated at the far end of the car park. There is a payphone in the laundry for outgoing calls only. NB There is no mobile signal down at the cottages.

## Garden

- There is a garden seat in the courtyard in front of the cottage



(Photo credit: Mike Henton)

## Additional information

- Assistance dogs are welcome at all our cottages
- In the event of a fire, it is the responsibility of the guests to evacuate themselves. Vibrating fire/smoke detectors are available if requested at time of booking. Please contact us if you have any other specific access requirements in this respect.

## Facilities at all cottages

The National Trust aims to expand the list of accessible /equipment/items available at each cottage and these may include

- Cordless kettle
- Hollowfibre bedding
- Chair with armrests
- Good reading light
- Large handle vegetable peeler
- Easy tin opener
- Non-slip mat for bath/shower
- Non-slip place mat
- Easy jar opener
- Information in alternative formats (on request)

Please note that we cannot guarantee that all items will be available at the time of your visit. Please enquire at the time of booking regarding any particular requests.

## Specialist equipment

Other specialist equipment such as wheelchairs, bath seats, toilet frames etc may be available for loan or purchase from the local Red Cross loan centre. Please check this out before booking the Cottage and contact us if you require further information.

<http://www.redcross.org.uk/standard.asp?id=89425>

## Future Plans to improve Access to National Trust Holiday Accommodation

- We are currently in the process of writing accessibility guides for all our holiday cottages and bunkhouses and improving access over time for all our guests. All feedback is very helpful in informing us of ways in which we can improve access. We welcome any comments or ideas from you about access at this cottage and thank you for taking the time to do this. Please do this in the most convenient way for you. See contact details below or information on website.

## About the Accessibility Guide

- This Accessibility Guide is intended to provide key information about the accommodation that may be particularly relevant to guests with disabilities. Please contact us prior to booking if you would like information that is more specific, and we will be happy to oblige.  
Email: [cottages@nationaltrust.org.uk](mailto:cottages@nationaltrust.org.uk)  
Phone: 0344 8002070

## Access for All at the National Trust

- The Access for All office works to improve access at all National Trust accommodation and properties. The office welcomes comments and ideas on improving access.  
Phone: 01793 818531  
Email: [accessforall@nationaltrust.org.uk](mailto:accessforall@nationaltrust.org.uk)

Date 21<sup>st</sup> December 2023