

National Trust Cottages Accessibility Guide

Cottage Ref: 010047

**4 Park Gates
Blickling
Norfolk
NR11 6NJ**



Introduction

- 4 Park Gates is a spacious house set in a large private garden and is arranged over two floors – ground and first floor.
- The cottage can accommodate 8 guests plus a cot
- The ground floor has a kitchen, utility room, dining room, sitting room, second sitting room, boot room and shower room with wc and hand basin.
- The first floor has three double bedrooms (one which can be a twin room on request) and one twin, and two bathrooms.
- The property is heated using an air source heat system, and a multi fuel stove in the sitting room, and open fire in second sitting room
- There is a large enclosed garden.

Pre-Arrival

- See the main webpage for booking and location details.
- Please contact us prior to booking if you have any specific access requirements.
- Directions provided with booking
- Bring a torch if arriving in dark

Arrival & Parking Facilities



- Cars can be parked on gravelled area directly in the cottage grounds and there is ample parking for four cars
- There is a small entrance gate into the grounds of the cottage which leads to the entrance door it is possible to unload car and then move car to parking which is within the cottage grounds.
- Shingled path leads round to porched entrance door.
- Step up to porch 130mm high x 1400mm wide x 940mm depth.
- The key is obtained from a key safe on the wall next to the entrance porch door, this key safe is 1500mm in height to mid point

Getting in (and out) of the cottage:

- The front door has a clear opening width of 760mm
- The front door of the building leads directly into lobby with stairs hallway of brick flooring with door mat.
- There are alternative exit and entrance doors once initial entry to cottage has been made, these are from kitchen and second sitting room and boot room.

Ground floor:

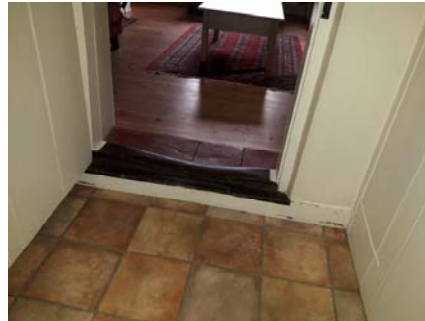
- Steps down from entrance lobby to both dining room and from second sitting room to boot room which leads to shower room/wc.
- Steep straight staircase immediately on entry from key safe entrance door, stairs have handrail on both sides
- Wooden flooring in dining room, sitting room and second sitting room, hard floor tiles in kitchen and utility room, vinyl flooring to boot room and shower room/wc.
- Door widths range from 720mm – 800mm



Sitting Room

- Threshold from entrance lobby is a height of 50mm x 120mm depth
- Level wooden floor with rug
- Good natural lighting two windows
- Wall and table lamps
- 2 seater sofa with a seat height of 450mm.
- 2 large sofas with a seat height of 500mm to top of seat cushion
- TV and DVD
- Wood Burning Stove

Second Sitting Room



- Level wooden floor with rug
- Good natural lighting
- Standard lamp
- Centre ceiling lantern
- Push Button Telephone
- 2 x 2 seater sofa with seat height of 460mm
- 1 x single armchairs with seat height of 460mm, and a foot stool
- Coffee table
- Book case
- Corner cabinet housing tv and dvd player
- Door to garden step up 140mm height x 150mm depth
- Step down to boot room 120mm height x 200mm depth

Boot Room



- Door to shower room/wc
- Boiler and heating controls
- Vinyl flooring
- Door to outside with step down, at highest point is 170mm and 200mm wide leads out onto concrete slabs

Shower Room /WC



- Vinyl flooring
- Heated towel rail
- Pedestal sink with height of 780mm
- Toilet height x 400mm
- Large shower cubicle with sliding door 460mm wide x with step up of 280mm shower internal is 670mm depth x 900mm width with height of control of shower to mid point 1640mm

Dining Room



- Step down from entrance lobby 160mm depth x 140mm height x 760mm width
- Wooden flooring
- Centre ceiling light over table
- Standard lamp
- Round pine table and 6 pine chairs with seat height of 420mm
- Radiator
- Pine dresser
- Door into kitchen

Kitchen



- Wall and floor cabinets, with worktop with a height of 930mm
- Good natural lighting with two windows
- Spot light tracks
- Electric range double oven with ceramic hob with controls on the front.
- Fridge with freezer box, dishwasher, cordless kettle, toaster and microwave.
- Ceramic sink with mixer taps.
- Door to outside side garden width 730mm, with step down of 70mm height
- Door into utility room 630mm width

Utility Room

- Directly off kitchen
- Washing machine
- Tumble Dryer
- Larder Fridge
- Freezer
- Ceiling rose light

First Floor



Approached from entrance lobby directly to carpeted staircase with handrails either side -13 steps of 210mm depth x 190mm height x 860mm width.

Top of stairs leads directly to double bedroom and twin bedroom which are on same level from top of stairs there is also two steps down. The top step is 150mm height x 280mm depth, the next step down is 110mm height x 330mm in depth. This leads to small landing where the 2 x double bedrooms (one of which can be twin) and two bathrooms are accessed.

Double Bedroom



- Good circulation space
- Metal Double bed 5'1/1530mm wide x 1950mm long x 1580mm high
- Clearance under bed 290mm
- Good natural lighting three windows
- Wall light
- Bedside cabinets with lamps
- Wooden chair with seat height of 420mm
- Built in wardrobe with clothes rail
- Chest of drawers with freestanding mirror
- Carpeted

Twin Bedroom



- Good circulation space
- Pine Beds 500mm height x 940mm width x 1900mm length
- Clearance under bed 220mm
- Good natural lighting two windows
- Ceiling light
- Bedside cabinets with lamps
- Pine wardrobe with hanging rail
- Chest of drawers with freestanding mirror
- Carpeted

Double Bedroom (zip and link can be twin)



- Poor circulation space
- Good natural lighting
- Divan zip and link bed 600mm height x 1900mm width x 1900mm length made up as superking
- Bedside cabinets with lamps
- Chest of drawers with freestanding mirror
- Corner pine wardrobe
- Carpeted

Double Bedroom



- Limited circulation space
- Good natural lighting
- Pine double 4'6" bed 530mm height x 1380mm width x 1900mm length
- Clearance under bed 210mm
- Ceiling light
- Bedside cabinets with lamps
- Chest of drawers with freestanding mirror
- Corner pine wardrobe
- Carpeted

Bathroom with mixer tap attachment



- From lower landing, step up into bathroom 130mm height x 1650mm depth then step down 140mm height
- Restricted height
- Pedestal sink with mixer taps height of sink 810mm
- Toilet height 430mm to top of seat
- Bath with mixer tap shower attachment, bath height 570mm external 540mm internal x 1210mm length
- Overhead lights
- Heated towel rail
- Built in cupboard housing immersion tank
- Vinyl flooring

Bathroom with shower over bath



- Good natural lighting
- Vanity unit housing sink with mixer taps basin height 840mm
- Toilet height 400mm to top of seat
- Bath with shower screen and shower over, grip handles to bath. Height of bath 560mm x 490mm width x 1400mm length
- Shower control over bath to mid point 1600mm
- Heated towel rail
- Vinyl flooring

Additional Information

- Dogs are accepted at this cottage
- In the event of a fire, it is the responsibility of the guests to evacuate themselves. Vibrating fire/smoke detectors are available if requested at time of booking. Please contact us if you have any other specific access requirements in this respect.

Facilities at all cottages

In addition to the standard equipment and facilities, this cottage is equipped with the following:

- Cordless kettle
- Reading lamps
- Non-slip mat for bath.
- Information in alternative formats (on request)

We aim to provide these items in all cottages but please check when booking as to their availability and to check if new items have been added to the list.

Specialist equipment

Other specialist equipment such as wheelchairs, bath seats, toilet frames etc may be available for loan or purchase from the local Red Cross loan centre. Please check this out before booking the Cottage and contact us if you require further information.

<http://www.redcross.org.uk/standard.asp?id=89425>

Future Plans to improve Access to NT Holiday Cottages

- We are currently in the process of writing accessibility guides for all our holiday cottages and improving access over time for all our guests. All feedback is very helpful in informing us of ways in which we can improve access to all our cottages. We welcome any comments or ideas from you about access at this cottage and thank you for taking the time to do this. Please do this in the most convenient way for you. See contact details below or information on website.

About the Accessibility Guide

- This Accessibility Guide is intended to provide key information about the cottage that may be particularly relevant to guests with disabilities. Please contact us prior to booking if you would like information that is more specific and we will be happy to oblige.

Email: cottages@nationaltrust.org.uk

Phone: 0344 800 2070

Access for All at the National Trust

- The Access for All office works to improve access at all National Trust accommodation and properties. The office welcomes comments and ideas on improving access.

Phone: 01793 818531

Email: accessforall@nationaltrust.org.uk

October 2019