

## National Trust Cottages Accessibility Guide

Hall Court  
Cotehele  
Cornwall  
PL12 6TA



Property Ref: 011006

### Introduction

This apartment is at the heart of the Cotehele Estate, and is joined to the mansion house that is open to visitors.

Sleeping up to 2 people in 1 bedroom, Hall Court is a first-floor apartment.

Electric heaters in place.

### Ground floor

Entrance hall with stairs leading to the bedroom.

### First floor

Double bedroom, five steps up to bathroom with shower over bath. Further door to kitchen and sitting/dining room.

### Pre-Arrival

- See the main webpage for booking and location details.
- Please contact us prior to booking if you have any specific access requirements. □  
Directions provided with booking

## Approach

The Cotehele Estate is approached by narrow country lanes with passing places.

## Arrival & Parking Facilities

- Parking is in the main visitor car park which is 300 metres from the apartment.
- There is space for unloading closer to the apartment of approximately 75 metres.
- Paths are wide and generally level. They are initially of tarmac leading to gravel and then cobblestones.  
There is a ramp and three stone steps, which range in height from 180mm to 200mm, tread 240mm and width 1500mm.
- There is no outside lighting so if arriving after dark it is advisable to have a torch.



## Getting in (and out) of the apartment

- Arched front door, minimum height 1500mm, maximum central height 1740mm, width 900mm. Uneven worn stone threshold, height 140mm, width 300mm, step down to hallway 70mm.
- Key box with dial combination lock located to the left of the front door at a height of 1500mm.



## Getting around the cottage

### Ground floor:

- Hall width 1500mm, length 2150mm, stone floor with large coir mat, one wall light.

### First floor:

- Stairs are half turn, uneven angular winders, step height 160mm, tread 300mm, width 650mm. Handrail to the right with wide central carpet runner.
- Landing circulation 1300mm by 1300mm with wood floorboards and one wall light.
- Five stairs from the bedroom to the back landing with stair height 210mm, tread 220mm and width 760mm. There is a reduced head height on the stairs of 1760mm. Handrail on the left when ascending. Stairs are wooden with a central wide carpet runner.
- Back landing circulation 1000mm by 1000mm with wooden floorboards.



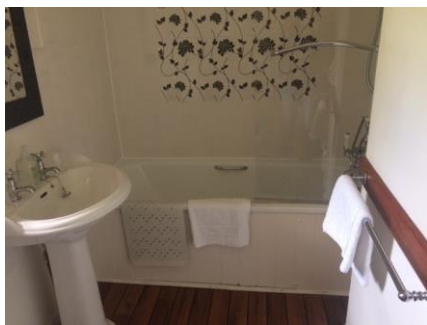
## Double Bedroom

- Door width, 770mm, level threshold.
- Floorboards with a large rug.
- Double bed width 1350mm, length 1900mm, height 680mm with clearance underneath of 200mm
- Two side tables and two bedside lamps with under lampshade on/off switches. One central three light pendant.
- Two windows with views over the courtyard and a croquet lawn.
- Chair, seat height 500mm.
- Hanging rail behind a curtain, chest of drawers and mirror.
- Electric heater
- Circulation space at both sides of bed 900mm and end of bed 1100mm.



## Bathroom

- Door width 590mm, level threshold.
- Vinyl flooring.
- WC height 420mm, flush button on the top right.
- Bath height 520mm, mixer tap with twist controls, grab handles and handheld shower attachment.
- Electric shower over the bath, controls height 1570mm with pivoted shower screen.
- Sink height 850mm with twist taps.
- Shaver socket height 1900mm integrated into light fixture on right hand side above sink.
- Ceiling light and window with views over croquet lawn.
- Electric heater.



## Kitchen

- Door width 690mm, level threshold.
- Wooden floorboards.
- Worktop height 930mm.
- Fitted kitchen with electric double oven and ceramic hob along with under counter combined fridge/freeze.
- Dishwasher, microwave and washer/dryer.
- Ceramic sink with mixer taps.
- Three wall lights and under wall cupboard lighting.
- Two narrow windows.
- Table with height of 740mm and clearance underneath of 600mm.
- Two wooden chairs, seat height 430mm.



## Sitting room

- Arched door to sitting room minimum height 1630mm, maximum height 1790mm, width 660mm.
- Wooden floor with large rug.
- Electric wood burner effect fire
- One 3-seater sofa with seat height 480mm.
- One armchair with seat height 450mm.
- Three windows with views over inner and outer courtyards.
- Two table lamps.
- Two floor lamps.
- One table with a height of 700mm and clearance underneath of 675mm.
- Two wooden chairs with upholstered pads with a seat height 440mm.
- Electric heating.
- Door to emergency exit.



## Outside

The apartment is at the heart of the Cotehele estate which has gardens, picnic areas, and miles of footpaths through woodland, countryside, and alongside the River Tamar.

## Additional information

- Assistance dogs are welcome at all our cottages
- In the event of a fire, it is the responsibility of the guests to evacuate themselves.
- Vibrating fire/smoke detectors are available if requested at time of booking. Please contact us if you have any other specific access requirements in this respect.

## Facilities at all cottages

The National Trust aims to expand the list of accessible /equipment/items available at each cottage and these may include

- Cordless kettle
- Hollowfibre bedding
- Chair with armrests
- Good reading light
- Large handle vegetable peeler
- Easy tin opener
- Non-slip mat for bath/shower
- Non-slip place mat
- Easy jar opener
- Information in alternative formats (on request)

Please note that we cannot guarantee that all items will be available at the time of your visit. Please enquire at the time of booking regarding any particular requests.

## Specialist equipment

Other specialist equipment such as wheelchairs, bath seats, toilet frames etc may be available for loan or purchase from the local Red Cross loan centre. Please check this out before booking the Cottage and contact us if you require further information.

<https://www.redcross.org.uk/get-help/borrow-a-wheelchair>

<https://www.redcross.org.uk/get-help/hire-a-toilet-aid>

## Future Plans to improve Accessibility to National Trust Holiday Cottages

We are currently in the process of writing accessibility guides for all our holiday cottages and improving access over time for all our guests. All feedback is very helpful in informing us of ways in which we can improve access to all our cottages. We welcome any comments or ideas from you about access at this cottage and thank you for taking the time to do this. Please do this in the most convenient way for you. See contact details below or information on website.



## **About the Accessibility Guide**

This Accessibility Guide is intended to provide key information about the cottage that may be particularly relevant to guests with disabilities. It is reviewed annually. Please contact us prior to booking if you would like more detailed information and we will be happy to oblige.

Phone: 0344 800 2070

Email: [holiday.enquiries@nationaltrust.org.uk](mailto:holiday.enquiries@nationaltrust.org.uk)

## **Access for All at the National Trust**

The Access for All office works to improve access at all National Trust accommodation and properties. The office welcomes comments and ideas on improving access.

Phone: 01793 818531

[accessforall@nationaltrust.org.uk](mailto:accessforall@nationaltrust.org.uk)

15<sup>th</sup> June 2026