

## National Trust Cottages Accessibility Guide

Mohun  
Pont  
Lanteglos by Fowey  
PL23 1NQ  
Ref: 011020



### Introduction

- Mohun is a single storey cottage located on the creek side at Pont Quay.
- The bedroom, bathroom, sitting room/diner/kitchen are all one floor.
- The sitting room, kitchen and diner are all one room with views over the creek.
- The cottage has night storage heating, convector heaters and a freestanding electric fireplace.
- Laundry facilities are in an outbuilding opposite the cottage.
- The land immediately around the cottage is reasonably flat but uneven with steps in places.
- There is a firm and level path in front of the cottage with steps to negotiate at the entrance stepping down into the cottage.

The cottage is arranged as follows:

Sitting room, kitchen, diner, bedroom and bathroom are all on ground level.

### Pre-Arrival

- See the main webpage for booking and location details.
- Please contact us prior to booking if you have any specific access requirements.
- Directions provided with booking.
- Please bring a torch.

### Approach

- The cottage is approached via country lanes and signposted to Polruan then Pont.
- A rough, 100m long track leads to the cottage running alongside the creek below.
- At the roadside is a sign: "Pont Creek Farm – Residents' Vehicles Only".
- There is a farm gate across the end of the track which should be kept closed.

## Arrival & Parking Facilities

- Parking is on a firm uneven gravelled area at the top of a short slope at the side of the quay. It is approximately 20m from the cottage.
- Parking for Mohun is alongside the garage which is not in use.
- From the parking area there is a slope down to the uneven gravelled quayside and then onto a concrete path to the main door accessed through a bolted gate.
- There are two steps 150-240mm and a 20mm wooden threshold leading to the entrance door.
- The key safe is on the right-hand side of the door on the window sill at a height of 90cm ffl (from floor level). It is operated by a combination lock mechanism.
- There is a “Mind your head” sign next to the key safe as the front door threshold is low.
- There is an outside sensor light over the entrance door and a couple on the path and quayside.
- At times the tide will cover the quayside. For safety there is no parking permitted on the quay. This area is only used for deliveries at low tide and emergency access.
- The gate to the cottage should be bolted shut to slow tidal surges and lessen the impact of the high tidal water flow. There is a small hole on the gate threshold that allows rain water to drain away. During high tides please access the cottage from the back via Pont Creek Cottage.



Parking

## Alternative Parking

Should you arrive at high tide when the quay is covered, there is alternative parking a little further along the road from the usual entrance.

Continue past the sign to 'Pont Creek Farm' up the hill and park on the roadside when you reach the u-bend in the road next to Saffron cottage.

Park your car and cross the road to access the footpath down to the cottages at Pont.

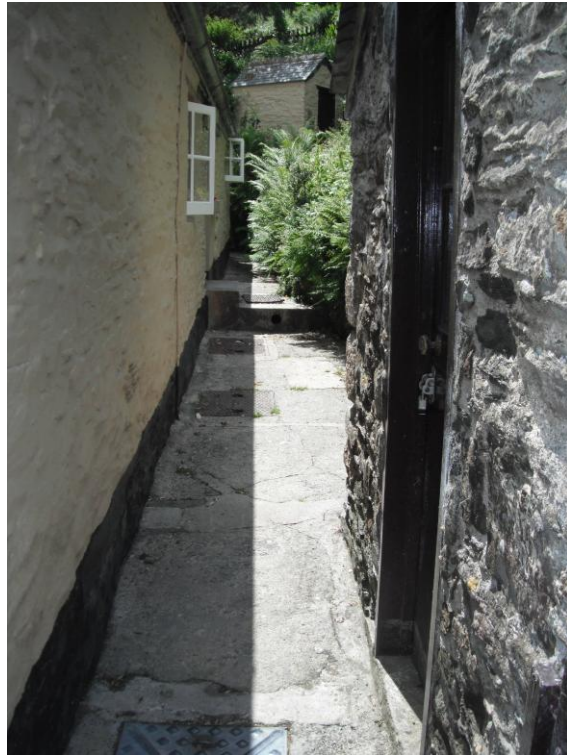


Quayside





Tidal defence gate



Path to entrance door

### Getting in (and out) of the cottage

- The main door has a clear opening width of 700mm and is a low doorway with a height of 1550mm.
- There is a “Mind your head” sign next to the door and key safe.
- There is a 280mm step from outside down into the hall.
- There are no other doors leading outside.
- There is a sensor light above the door.
- There is an emergency torch.
- There is a door curtain.



## Getting around the cottage

- There is a vinyl floor covering in the hall, kitchen area and bathroom.
- There is carpet in the sitting room/diner and bedroom.
- There are various transition strips between the different types of flooring and at the door thresholds.
- Internal doors clear opening widths are 710mm.
- Looking from sitting room past kitchen into entrance hall where there is a change in the flooring between the kitchen area and the sitting room area from vinyl to carpet.





### **Kitchen/sitting room/diner**

- The kitchen/sitting room/diner is one room approached from the hall.
- There are five recessed spotlights in the kitchen area plus three under cupboard lights.
- The height of worktop is 910mm.
- There is a ceramic hob and a single oven with controls to the front which is 910mm high.
- There is a built-in fridge/freezer, a cordless kettle and a toaster.
- The microwave is housed in a wall unit to the left of the sink. The turntable is 600mm above the kitchen worktop.
- There is a dishwasher.
- Behind the stainless steel sink and floor units is a tiled splash back dividing the kitchen area from the sitting room.
- The room divider between the kitchen and dining area / sitting room is 1150mm high
- There are windows to the front and side.

## Sitting room/diner

- The window to the front has views over the creek with a narrow-cushioned window seat.
- There is a central ceiling light and a standard lamp in the sitting area.
- There is a small chest style table at a height of 470mm.
- There is an armchair with a seat height of 440mm and a sofa with a seat height of 440mm.
- There is a TV and DVD player.
- There is a dining table with extendable sides and two chairs.
- The table has knee clearance of 600mm. The dining chairs are 460mm high.
- There is a free-standing electric fireplace (fan heater).



## Bedroom

- Door from hall.
- There is a centralised double bed 1530mm wide x 1970mm long x 680mm high.
- The clearance underneath the bed is 50mm.
- There is a central light fitting.
- There is a chair with a seat height of 450mm and a chest of drawers at 810mm high.
- There are two bedside tables 61-630mm high with table lamps.
- There is a wardrobe with a clothes rail at 1590mm ffl.
- There is a window overlooking the path and garden.



## Bathroom

- The bathroom is off the hall.
- The bath is 1550mm long and 560mm high. It has an electric shower overhead. There are two hand grips.
- The WC is 450mm high.
- The basin is 820mm high.
- There is a central ceiling light fitting and shaver light.
- There is an electric towel rail and blow heater.
- There is no window in this room.
- There is a water tank cupboard and utility cupboard.



Bath with electric shower over

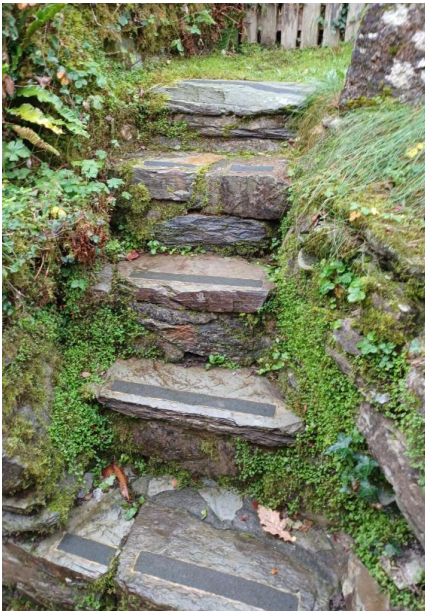
## Laundry Room

- There is a washing machine and a drying machine in an out building approximately 5m from the cottage with a laundry sign on the door.
- Both machines are positioned on concrete raised plinths with covered outdoor electrical sockets above them.
- There is a table next to them to place a laundry hamper.
- There is a padlocked log box for staff use only.
- The door is narrow at only 600mm wide.
- The path sloped upwards towards the door.
- There is a concrete step with an overhanging lip at a height of 190mm ffl with non-slip step strips on it and a 20mm wooden raised threshold leading into the laundry room.
- The floor surface of the communal laundry room is concrete.



## Garden

- The garden is directly opposite the main door and is raised above the path.
- There are 5 uneven stone steps into the garden ranging from 190-250mm high.
- The area is small with grass and shrubs surrounded by shrubby sloped areas and stone walling.
- There is a table with fixed bench seating.
- There area is enclosed by a rope threaded through wooden uprights that are for demarcation purposes only and will not withstand any weight being put on them.
- There is no handrail.
- There is a drop from the raised garden to the path below highlighted by the boundary rope.



## Additional Information

- Assistance dogs are welcome at all our cottages
- In the event of a fire, it is the responsibility of the guests to evacuate themselves. Vibrating fire/smoke detectors are available if requested at time of booking. Please contact us if you have any other specific access requirements in this respect.

## Facilities at all cottages

The National Trust aims to expand the list of accessible /equipment/items available at each cottage and these may include

- Cordless kettle
- Hollowfibre bedding
- Chair with armrests
- Good reading light
- Large handle vegetable peeler
- Easy tin opener
- Non-slip mat for bath/shower
- Non-slip place mat
- Easy jar opener
- Information in alternative formats (on request)

Please note that we cannot guarantee that all items will be available at the time of your visit. Please enquire at the time of booking regarding any particular requests.

## Specialist equipment

Other specialist equipment such as wheelchairs, bath seats, toilet frames etc may be available for loan or purchase from the local Red Cross loan centre. Please check this out before booking the Cottage and contact us if you require further information.

<https://www.redcross.org.uk/get-help/borrow-a-wheelchair>

<https://www.redcross.org.uk/get-help/hire-a-toilet-aid>

## Future plans to improve Access to NT Holiday Cottages

- We are currently in the process of writing Accessibility Guides for all our holiday cottages and improving access over time for all our guests. All feedback is very helpful in informing us of ways in which we can improve access to all our cottages. We welcome any comments or ideas from you about access at this cottage and thank you for taking the time to do this. Please do this in the most convenient way for you. See contact details below or information on website.

## About the Accessibility Guide

- This Accessibility Guide is intended to provide key information about the cottage that may be particularly relevant to guests with disabilities. Please contact us prior to booking if you would like information that is more specific and we will be happy to oblige.

- - Email: [holiday.enquiries@nationaltrust.org.uk](mailto:holiday.enquiries@nationaltrust.org.uk)
  - Phone: 0344 8002070

## Access for All at the National Trust

- The Access for All office works to improve access at all National Trust cottages and properties. The office welcomes comments and ideas on improving access.
  - Phone: 01793 818531
  - Email: [accessforall@nationaltrust.org.uk](mailto:accessforall@nationaltrust.org.uk)

Date: May 2026