

Cottage Accessibility Guide

Hanbury Lodge, (006024)
Hanbury Hall,
School Road,
Droitwich
Worcestershire,
WR9 7EA



Introduction

Hanbury Lodge is the original late 18th century front lodge to Hanbury Hall. This listed building has original features such as false windows and doors to show its grandeur but inside has a very homely and cosy feel with low ceilings and quaint rooms, with an open fire in the sitting room.

Enjoy an alfresco breakfast in the garden with views over the parkland and up to the main hall, after you could go on a ramble along one of the many walking trails around the surrounding park, which has its origins in the ancient forest of Feckenham. Guests benefit from free entry into the elegant William and Mary style Hanbury Hall when it is open and can explore the parkland at any time.

The Cottage is arranged as follows:

Ground Floor:

Kitchen with small dining area, sitting room with open fire.

First Floor:

- Landing, King size bedroom, bathroom and single bedroom.

Pre-Arrival

- See the main webpage for booking and location details.
- Please contact us prior to booking if you have any specific access requirements.
- Directions provided with booking.
- Please drive slowly along the driveway.

Arrival & Parking Facilities

- Access is off the main entrance drive to Hanbury Hall. See image 1.
- Parking is on an exclusive gravelled driveway by the side of Hanbury Lodge. See image 2.
- Access from a vehicle parked on the driveway is via the back door of the property and is a distance of approximately 4000mm.
- There is also a pedestrian gate from the front of the cottage onto the road that is 1200mm wide. See image 3.

1



2



3



Getting in (and out) of the cottage

- Pathways and garden are on one level. The pathways are of gravel and brick.
- There are two steps up to the entrance door at the back of the property. The bottom step is 130mm deep and the top is 225mm deep, there is a hand rail next to the door. The entrance door way is 750mm wide. See image 1.
- The Key safe for Hanbury Lodge is on the left-hand side of the entrance door. See image 2.
- The alternative door exits from the living room and has an open width of 830mm. See image 3.



Getting around the cottage

Ground floor:

- The ground floor is all on the same level, there is tiled laminate flooring throughout the kitchen and sitting room. With a rug in the sitting room.
- The stairway has a door at the bottom with 11 steps. The stairs are carpeted and are 720mm wide with the highest step being 200mm. The stairs bend at the top slightly; the narrowest part of the step as it bends is 200mm.
- The entrance door at the rear of the lodge leads into the kitchen with a dining table and chairs.
 - Leading from the kitchen to the left is a doorway that leads to the sitting room with open fire.



First floor:

- Stairs lead to top landing, the narrowest part is 680mm wide, which the single bedroom, bathroom and king bedroom leads from it.
- The landing and bedrooms are carpeted.
- The bathroom has vinyl flooring

Kitchen / Dining Room

Height of worktop is 880mm

- The sink has separate turn taps for cold and hot water.
- Electric oven, with ceramic hob.
- Electric appliances include fridge with ice box, cordless kettle and toaster, washer dryer machine and a microwave.
- Folding dining / breakfast table is 730mm high.
- There are 3 chairs with a seat height of 450mm, all chairs have back rests and seat cushions but there are no arm rests.



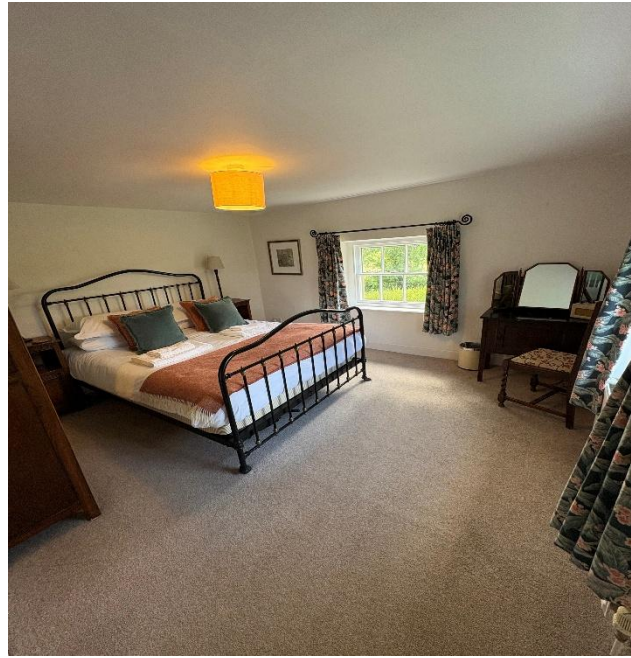
Sitting Room

- There is comfortable seating for 3 people.
- A sofa with seat height of 450mm and an armchair with seat height of 450mm. There arm rest height of 690mm.
- The coffee table is 520mm high.
- There is a television, DVD player and Radio.
- Open wood fire, a guard is provided.



Double Bedroom

- The floor is carpeted.
- King size bed
- Bed height 580mm
- There is a minimum walk way of 600mm around the bed



Single Bedroom

- The floor is carpeted.
- One single bed.
- Bed height 660mm.



Bathroom

- The floor is covered in vinyl.
- There is a bathroom with toilet, basin and bath with dial taps and attached shower head attachment.
- The toilet is 420mm high with a push button flush.
- The sink is 800mm high, with separate dial taps.
- The bath edge is 560mm from the floor and the bath is 350mm deep inside with a width of 580mm and a length of 1470mm.



Garden

- Own private garden, this is all on one level but is not completely flat.
- Garden area is mainly grass and is 'lightly' enclosed
- Metal table with x4 chairs, seat height 406mm, table height 711mm, also a wooden garden bench with a seat height of 432mm

Additional Information

- Assistance dogs are welcome at all our cottages
- In the event of a fire, it is the responsibility of the guests to evacuate themselves. Vibrating fire/smoke detectors are available if requested at time of booking. Please contact us if you have any other specific access requirements in this respect.

Facilities at all cottages

The National Trust aims to expand the list of accessible /equipment/items available at each cottage and these may include

- Cordless kettle
- Hollowfibre bedding
- Chair with armrests
- Good reading light
- Large handle vegetable peeler
- Easy tin opener
- Non-slip mat for bath/shower
- Non-slip place mat

- Easy jar opener
- Information in alternative formats (on request)

Please note that we cannot guarantee that all items will be available at the time of your visit. Please enquire at the time of booking regarding any particular requests.

Specialist equipment

Other specialist equipment such as wheelchairs, bath seats, toilet frames etc may be available for loan or purchase from the local Red Cross loan centre. Please check this out before booking the Cottage and contact us if you require further information.

<http://www.redcross.org.uk/standard.asp?id=89425>

About the Access Guide

This Access Guide is intended to provide key information about the cottage that may be particularly relevant to guests with disabilities. It is reviewed annually. Please contact us prior to booking if you would like more detailed information and we will be happy to oblige.

Phone:

0344 800 2070

Email: cottages@nationaltrust.org.uk

Access for All at the National Trust

We continue to work to improve accessibility at all our holiday cottages. We welcome comments and ideas on improving access.

Phone: 0344 800 2070

Email: cottages@nationaltrust.org.uk

Date: June 2026