

## Accessibility Guide

Attingham West Lodge  
Atcham  
Shrewsbury  
Shropshire  
SY5 6QH



### Introduction

Situated at the imposing entrance to Attingham Park, Attingham West Lodge provides comfortable accommodation that sleeps 3 people.

Attingham West Lodge was commissioned by Richard, 5th Lord Berwick and was built in 1862, it is now a comfortable holiday cottage with contemporary Georgian style. The lodge is a Grade II listed building with river views from the master bedroom, walks from the doorstep and after-hours access to the estate.

The Cottage is arranged as follows:

Ground Floor:

Bathroom, Kitchen, Sitting room and Dining room.

First Floor:

One double bedroom and one single bedroom.

### Pre-Arrival

- See the main webpage for booking and location details.
- Please contact us prior to booking if you have any specific access requirements.
- Directions provided with booking

### Arrival & Parking Facilities

- There is room for one car to park next to the Lodge.
- Access to the Lodge is via a short tarmac and compacted gravel driveway as well as a concrete pathway that gives access to the back of the Lodge.
- There is a gate that gives access to the back entrance to the Lodge that is 214cm wide.
- The Key Safe is situated next to the back entrance and it is 11 meters to the back entrance from the car parking area.
- There is a shallow step to access the front door of the property and a 150mm step to access the back door.



## Getting in (and out) of the cottage

- The entrance back door leads into a hallway of 830mm widening to 1120mm. The width of the door is 830mm. The back door has an opening width of 670mm and a step up of 150mm.
- The front door leads to the small hallway and has a gradual rise and a shallow step up of 650mm. The door width is 830mm.

## Getting around the cottage

### Ground floor:

- The entry door leads into a small hall, off this a cupboard, the bathroom and kitchen, all are tiled underfoot. See image 1 below.
- The door to the bathroom has a width of 730mm and height of 1930mm
- The cupboard door has a width of 720mm
- The kitchen door has a width of 820mm and height of 1930mm
- The kitchen is a galley kitchen with a width of 1070mm.
- The sitting room is accessed through the kitchen, the doorway has an opening width of 850mm, the height is 1780mm.
- From the sitting room there is an open doorway into the dining room which is 790mm wide and 182mm high.
- There is a door from the sitting room to a small entrance hall, the width is 700mm and height is 1800mm
- The front Hall is 750mm wide, there is the original front entrance door and the stairs. See image 2 below.
- The floor covering in the sitting room, dining room and front hallway is laminate, the stairs are carpeted.



1



2

## First floor

- There is a steep staircase that leads to the double and single bedrooms, see image 1 below. The width of the stairs is 650mm with 11 steps rising to the bedrooms, each step is 220mm high. Each bedroom has a shallower step of 70mm high at the entrance. See image 2 below
- Both bedrooms have doors with opening widths of 740mm.
- Both bedrooms are carpeted with no loose rugs.

1

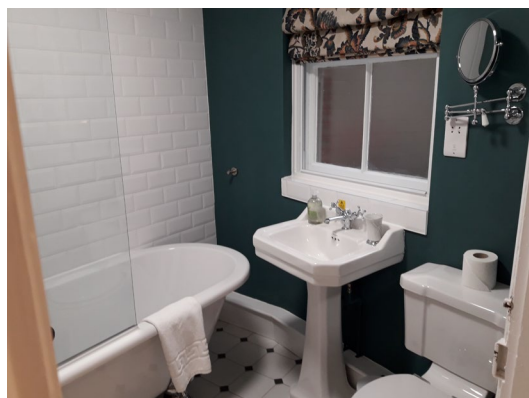


2



## Kitchen

- Height of worktop is 890mm
- There is an electric cooker, extractor fan, microwave, fridge freezer, dishwasher, and washer dryer.



## Ground floor Bathroom

- WC and basin
- The WC is 460mm high with handle flush.
- There is a shower over bath.
- Basin 840mm high
- Bath has a height of 650mm, it is internally 1500mm long and 460mm deep.



## Sitting Room

- Comfortable seating for 3 people provided. 1 two-seater sofa with a seat height of 460mm and a single armchair with seat height of 430mm.
- Nesting table set with a height of 450mm
- Television and DVD player is provided



## Dining Room

- Small round table 760mm diameter
- The table seats 4 people with a seat height of 460mm.

## Master Bedroom

- There is a 6ft / 1820mm king bed in the room at a height of 690mm.
- The narrowest point around the bed is 540mm.
- There are bedside lamps with switches on the cable.



## Single Bedroom

- There is a 3ft / 910mm single bed in the room at a height of 670mm.
- There is lots of room each side of the bed, however there is only a distance of 430mm between the bottom of the bed and the window.

## Garden

- There is a private garden at the back of the lodge which is flat and laid to lawn. The patio area is all on one level and is concrete.
- There is a table which is 740mm high and four chairs with armrests which have a 420mm high seat.



## Additional Information

- Assistance dogs are welcome at all our cottages
- In the event of a fire, it is the responsibility of the guests to evacuate themselves. Vibrating fire/smoke detectors are available if requested at time of booking. Please contact us if you have any other specific access requirements in this respect.

## Facilities at all cottages

The National Trust aims to expand the list of accessible /equipment/items available at each cottage and these may include

- Cordless kettle
- Hollowfibre bedding
- Chair with armrests
- Good reading light
- Large handle vegetable peeler
- Easy tin opener
- Non-slip mat for bath/shower
- Easy jar opener
- Information in alternative formats (on request)

Please note that we cannot guarantee that all items will be available at the time of your visit. Please enquire at the time of booking regarding any particular requests.

## Specialist equipment

Other specialist equipment such as wheelchairs, bath seats, toilet frames etc may be available for loan or purchase from the local Red Cross loan centre. Please check this out before booking the Cottage and contact us if you require further information.

<http://www.redcross.org.uk/standard.asp?id=89425>

## **Future Plans to improve Access to NT Holiday Cottages**

We are currently in the process of writing accessibility guides for all our holiday cottages and improving access over time for all our guests. All feedback is very helpful in informing us of ways in which we can improve access to all our cottages. We welcome any comments or ideas from you about access at this cottage and thank you for taking the time to do this. Please do this in the most convenient way for you. See contact details below or information on website.

## **About the Accessibility Guide**

This Accessibility Guide is intended to provide key information about the cottage that may be particularly relevant to guests with disabilities. Please contact us prior to booking if you would like information that is more specific and we will be happy to oblige.

Email: [cottages@nationaltrust.org.uk](mailto:cottages@nationaltrust.org.uk)

Phone: 0844 8002070

## **Access for All at the National Trust**

The Access for All office works to improve access at all National Trust cottages and properties. The office welcomes comments and ideas on improving access.

Phone: 01793 818531

Email: [accessforall@nationaltrust.org.uk](mailto:accessforall@nationaltrust.org.uk)

October 2022