

National Trust Cottages Accessibility Guide (April 2023)

Bluebell Cottage
Crom Estate
Newtownbutler

Ref: 019012



Introduction

- Tucked away in the corner of the courtyard, Bluebell has a warm sunlit sitting room and is popular with all visitors.

The Cottage is arranged as follows:

Ground Floor:

- Sitting / dining room, kitchen.

First Floor:

- Bathroom with shower over bath, double bedroom, single bedroom.

Pre-Arrival

- See the main webpage for booking and location details.
- Please contact us prior to booking if you have any specific access requirements.
- Directions provided with booking.
- Please bring a torch if arriving after dark.

Approach

- Single track tarmac road through the Estate, passing one cattle grid and two speed ramps
- The approach is well signed for Holiday Cottages with National Trust logo.

Arrival & Parking Facilities

- Parking in gravel courtyard immediately outside cottage door with paved path area around courtyard and leading to cottage
- The key for the cottage is kept in a key safe within the laundry room. The laundry room is located on the left-hand side of the courtyard archway upon entering. There is an 80mm step into the laundry room, an outside door 850mm wide and inside door 700mm wide. The key safe is located on the right-hand side 1600mm high from the ground, each key safe is labelled for each cottage.



Getting in (and out) of the cottage

- Step into cottage 80mm high.
- Door is 750mm wide into level flagstone flooring.

Getting around the cottage

Entrance Hall

- Heating/HW panel 1400mm high.
- Tall Table 1000mm x 400mm x 800mm high.
- Storage cupboard'
- Two overhead lights.
- Combined co/smoke detector.
- Coat hooks 1420mm high.
- 2ltr foam fire extinguisher.

Ground Floor

- Level access throughout the ground floor.
- Floor surfaces are a mixture of carpet and vinyl flooring.
- Internal door widths are 710-730mm.

First Floor

- Carpeted staircase with 15 steps, width 840mm at narrowest point, steps 200mm high to first floor with handrail to right hand side ascending.

Sitting Room

- Door access 710mm wide into carpeted sitting / dining room.
- Two-seater leather sofa 450mm high and armchair 470mm high.
- Open fire.
- Dining area with wooden dining table 760mm high with 630mm clear knee space underneath.
- Four wooden chairs with soft leather cushion, all with backrest 490mm high.
- Combined smoke/co detector.
- Built in shelves – lowest height 770mm.
- TV unit with TV and DVD player.
- One table lamp and a large chest.
- Two overhead and two wall mounted over mantle lights.



Kitchen

- Door to kitchen is 730mm wide into level vinyl flooring.
- The kitchen has fitted units with built in cooker with electric hob, washing machine, fridge freezer and microwave. Kitchen worktop is 910mm high.
- Sink has mixed lever tap.
- Overhead pendant light.
- Extractor fan.
- Combined smoke/co detector.



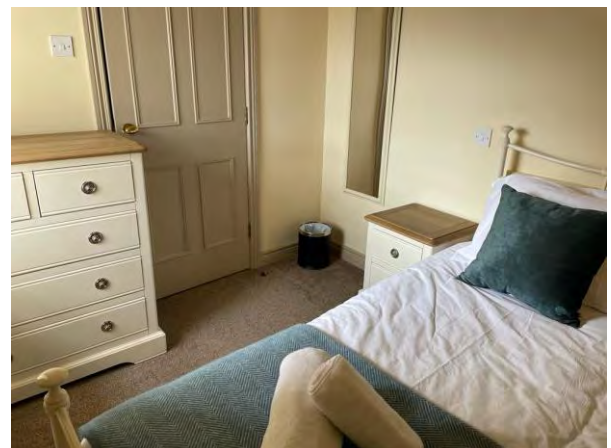
Double Bedroom

- Door 710mm wide 2240mm long x 1430mm wide.
- Small bedside locker each side of bed.
- One overhead and two wall mounted overbed lights.
- Combined smoke/co detector.
- Free standing wardrobe, chest of drawers and long wall mirror.
- Views to lawn.



Single Bedroom

- Door 720mm wide.
- Divan bed 570mm high x 1950mm long x 1000mm wide.
- Small bedside locker to left hand side of bed and chest of drawers.
- One overhead and one wall mounted Overbed light.
- Coat pegs 1730mm high.
- Combined smoke/co detector.
- Views to courtyard.



Bathroom

- Door 720mm wide.
- Bathroom comprises basin and electric shower over bath with one grab rail.
- Basin is 870mm high with cupboard underneath.
- Bath is 560mm high x 690mm wide x 1690mm long.
- Shower unit controls are 1360mm high.
- Toilet is 440mm high with button flush.
- Heated towel rail.
- Extractor fan.
- Three recessed ceiling lights.



Garden

- No designated garden area for cottage but surrounded by countryside and several picnic benches close to the cottage which can be used by guests.

Additional Information

Facilities at all cottages

The National Trust aims to expand the list of accessible /equipment/items available at each cottage and these may include.

- Cordless kettle
- Hollowfibre bedding
- Chair with armrests
- Good reading light
- Large handle vegetable peeler
- Easy tin opener
- Non-slip mat for bath/shower
- Non-slip place mat
- Easy jar opener
- Information in alternative formats (on request)

Please note that we cannot guarantee that all items will be available at the time of your visit. Please enquire at the time of booking regarding any particular requests.

Specialist equipment

Other specialist equipment such as wheelchairs, bath seats, toilet frames etc may be available for loan or purchase from the local Red Cross loan centre. Please check this out before booking the cottage and contact us if you require further information.

<http://www.redcross.org.uk/standard.asp?id=89425>

Future Plans to improve Access to National Trust Holiday Accommodation

- We are currently in the process of writing accessibility guides for all our holiday cottages and bunkhouses and improving access over time for all our guests. All feedback is very helpful in informing us of ways in which we can improve access. We welcome any comments or ideas from you about access at this cottage and thank you for taking the time to do this. Please do this in the most convenient way for you. See contact details below or information on website.

About the Accessibility Guide

- This Accessibility Guide is intended to provide key information about the accommodation that may be particularly relevant to guests with disabilities. Please contact us prior to booking if you would like information that is more specific, and we will be happy to oblige.
Email: holiday.enquiries@nationaltrust.org.uk
Phone: 0344 8002070

Access for All at the National Trust

- The Access for All office works to improve access at all National Trust accommodation and properties. The office welcomes comments and ideas on improving access.
Phone: 01793 818531
Email: accessforall@nationaltrust.org.uk

Reviewed April 2023.