

National Trust Holiday Cottages Accessibility Guide (23rd March 2022)

Boatman's Loft
Old Coastguard Station
The Dock
Robin Hood's Bay
Whitby
YO22

Ref: 020018

Introduction

The Old Coastguard Station stands right down at the bottom of this unspoilt, working, picturesque 17th century fishing village. Originally an inn and a coastguard look-out station, the Trust bought the building in 1998 and converted a part of it to holiday use in 2000. Prior to that, in recent years, the building had served as a marine life study centre. The ground and first floors of the building house a Trust café and interpretative displays. The holiday apartment is completely separate, on the second floor, with stunning sea views.

Pre-Arrival

- See the main webpage for booking and location details
- Please contact us prior to booking if you have any specific access requirements
- Directions provided with booking confirmation.

Approach

The Old Coastguard Station is situated beside the sea at the bottom of a steep, partially cobbled, single track hill. The approach to the building has steps and is uneven underfoot.



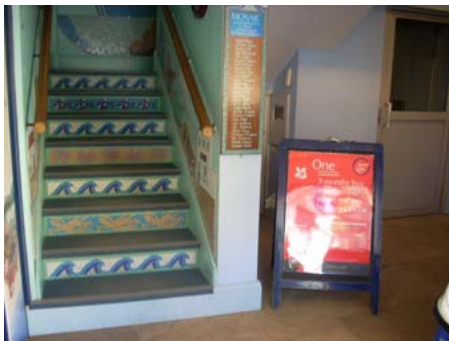
Arrival & Parking Facilities

Cars are only permitted to Boatman's Loft for dropping off. Parking is in one of two Scarborough Borough Council car parks at the top of hill, for which charges apply.

Please note that there is a 365 metre steep slope between the cottage and the car park.

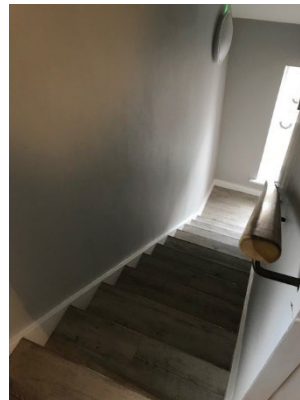
Getting in (and out) of the holiday cottage

- Two flagged uneven steps up to Old Coastguard Station main door with metal threshold; the door opens to 590mm wide. Key safe for Boatman's Loft is on left of entrance door
- Inner lobby with entrance to shop and exhibition on left. Flagstone floor.
- Stairs to first floor; 15 steps each at 188mm high; right hand turn in stairs after 8 steps. Hand rail on both sides of stairs.
- Fire door to Exhibition Room on right at top of stairs opens to 780mm wide; leads to entrance door to Boatman's Loft on left which opens to 680mm wide.



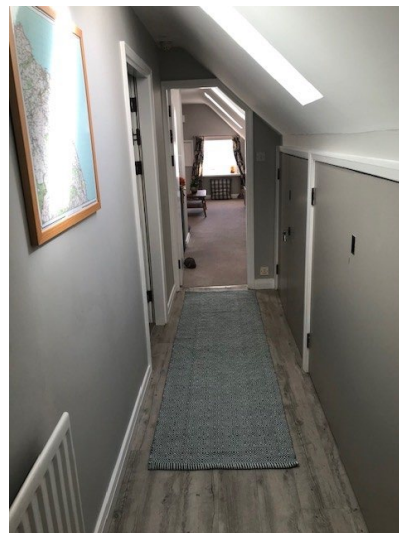
Getting around the holiday cottage

- Door from entrance lobby (opens to 760mm wide) opens on to another lobby, window, and staircase.
- Stairs to second floor; 15 steps each at 190mm high from lobby; left hand turn in stairs after 2 steps. Hand rail on left side of stairs going up. Floor surface is vinyl.



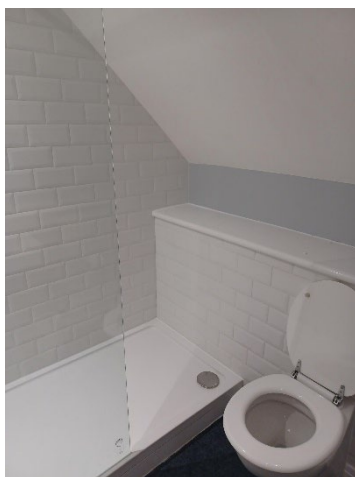
Landing and corridor

- Landing 920mm wide maximum; window on right.
- Corridor – 960mm wide minimum, increasing to 1060mm maximum after bathroom door
- Cupboards housing boiler, washing machine, and tumble dryer along right hand side of corridor, and locked cupboard for Caretaker supplies.
- One opening rooflight and one radiator.
- Floor surface is vinyl, with a rug and non-slip underlay.



Bathroom

- Entrance door from corridor opens to 680mm wide.
- Walk-in shower – step in is 140mm high; width of entrance is 670mm wide. Sloping ceiling means that the minimum height from the step into the shower from the ceiling is 1600mm and the minimum width of the entrance to the shower is 380mm.
- Toilet – seat is 450mm from floor level.
- Wash hand basin is 820mm high.
- Sloping ceiling – 730mm at lowest point; 2300mm at highest point (above entrance door).
- Radiator.
- Vinyl flooring.



Bedroom

- Entrance door from corridor opens to 750mm wide.
- Sloping ceiling – 730mm at lowest point; 2300mm at highest point (above entrance door and head of bed). Limited access to far side of bed due to sloping ceiling.
- King size bed; 580mm high.
- Fitted wardrobe, fitted dressing table with chair, and oak bedside tables.
- Radiator
- Floor is carpeted.



Open plan Kitchen / Dining Room / Sitting Room

- Entrance door from corridor opens to 680mm wide, and slopes from 1730 – 1970mm high.
- Sloping ceiling – 970mm at lowest point; 2300mm at highest point. The highest point travels the full length of the room and is 1000mm wide.
- Flooring is vinyl in kitchen area, and the rest of the room is carpeted.

Kitchen area

- Worktop height 930mm
- Electric oven and hob, dishwasher, microwave, integrated fridge, small freezer in cupboard, cordless kettle, and toaster.
- Opening rooflight.
- Floor is vinyl.



Dining / Sitting area

- Two-seater sofa at 400mm seat height from floor.
- Breakfast bar dining area (extension of kitchen) 930mm high.
- 2 x kitchen stools; seat height 660mm.
- 2 x occasional tables, coffee table, and TV Unit.
- TV, DVD player, radio/CD player
- Radiators x 3
- Opening rooflight and two windows.
- Floor is carpeted.



Additional Information

Facilities at all cottages

The National Trust aims to expand the list of accessible /equipment/items available at each cottage and these may include

- Cordless kettle
- Hollowfibre bedding
- Chair with armrests
- Good reading light
- Large handle vegetable peeler
- Easy tin opener
- Non-slip mat for bath/shower
- Non-slip place mat
- Easy jar opener
- Information in alternative formats (on request)

Please note that we cannot guarantee that all items will be available at the time of your visit. Please enquire at the time of booking regarding any specific requests.

Specialist equipment

Other specialist equipment such as wheelchairs, bath seats, toilet frames etc may be available for loan or purchase from the local Red Cross loan centre. Please check this out before booking the Cottage and contact us if you require further information.

<http://www.redcross.org.uk/standard.asp?id=89425>

Future plans to improve Access to National Trust Holiday Accommodation

- We are currently in the process of writing accessibility guides for all our holiday cottages and bunkhouses and improving access over time for all our guests. All feedback is very helpful in informing us of ways in which we can improve access. We welcome any comments or ideas from you about access at this cottage and thank you for taking the time to do this. Please do this in the most convenient way for you. See contact details below or information on website.

About the Accessibility Guide

- This Accessibility Guide is intended to provide key information about the accommodation that may be particularly relevant to guests with disabilities. Please contact us prior to booking if you would like information that is more specific and we will be happy to oblige.

Email: holiday.enquiries@nationaltrust.org.uk

Phone: 0344 800 2070

Access for All at the National Trust

- The Access for All office works to improve access at all National Trust accommodation and properties. The office welcomes comments and ideas on improving access.

Phone: 01793 818531

Email: accessforall@nationaltrust.org.uk

Date: 23rd March 2022