

National Trust

National Trust Cottages Accessibility Guide



Bwthyn-yr-Ardd
Plas yn Rhiw
Llyn Peninsula
Gwynedd
North Wales

Property Ref: 008017

Introduction

- This cottage (Bwthyn Yr Ardd) is a former gardener's cottage adjoining a small manor house (Plas Yn Rhiw) set in extensive grounds on the Llŷn Peninsula.
- The cottage can accommodate four people plus a cot.
- Night storage heating.
- Wood burning stove in inglenook fireplace.
- Visitors enjoy the freedom of the gardens throughout the year and the manor house when it is open.
- Parking is available at Plas yn Rhiw estate.

The Cottage is arranged as follows:

Ground Floor

- Kitchen, sitting/dining room with inglenook fireplace and twin bedroom.

First Floor

- One double bedroom and bathroom.

Pre-Arrival

- See the main webpage for booking and location details.
- Please contact us prior to booking if you have any specific access requirements.
- Directions provided with booking
- Please bring a torch if arriving in the dark as there are no streetlights here.

Approach

- 12 miles south-west of Pwllheli. Follow signs to Plas yn Rhiw. B4413 to Aberdaron (drive gates at bottom Rhiw Hill).
- Guests need to follow the information sent with the booking information with care.

Arrival & Parking Facilities

- There is a shared parking area next to the main house. The track from the car park to the cottage is approximately 100 metres. The key safe is in a black box outside the front door to the right (as facing). It is operated by a push button mechanism. A torch is recommended especially if arriving in the dark as the numbers on the box can be difficult to see. The key is returned to the key safe on departure.



Getting in (and out) of the cottage

- The front door has a clear opening width of 79cm. □
- The cottage is approached through the gardens of the house.

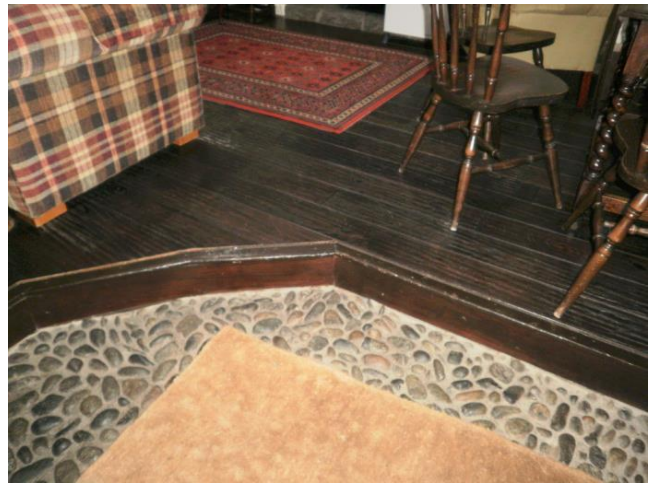


covered path to door of cottage

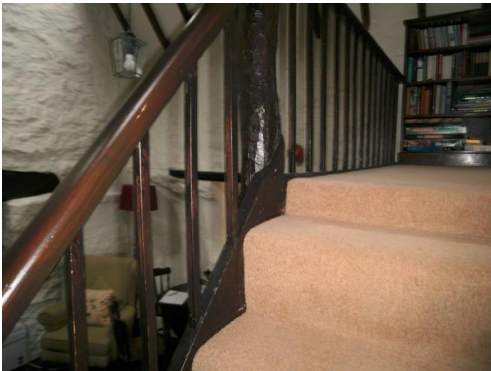
Getting around the cottage

Ground Floor

- There is a front doorstep of 4cm.
- Level access from the entrance porch through to the kitchen and twin bedroom. There is, however, a small step measuring 16cm leading into the lounge/dining area.
- Internal door widths on the ground floor are 68cm apart from the door into the kitchen which is 79cm.
- There are different floor coverings throughout as follows; flagstones in the entrance porch, lino in the kitchen, the lounge has a wooden floor (with large rug with non-slip backing, wooden floors with rug in double bedroom and carpet in the twin bedroom.
- The staircase to the first floor is 77cm wide with the height of the risers being 20cm.
- Bannister rail to the left-hand side is 69cm.



- There is a door through to the upstairs landing which is 66cm wide. The door into the double bedroom is 74cm wide.



Stairs and upstairs landing

Kitchen

- Height of worktop is 90cm.
- Electric cooker with ceramic top and fridge freezer.
- Led spotlights.
- Electric toaster and kettle.



Sitting Room

- One sofa with seat height of 43cm.
- Two armchairs with seat height of 41cm.
- Wood burning stove.
- Dining table with a height of 73cm. Wooden dining chairs have a height of 44cm.
- Nest of tables of heights: 43cm, 40cm. and 38cm.
- Large rug with non-slip backing covering floor in front of fireplace.



Twin Bedroom

- On ground floor.
- The antique brass/iron beds are 68cm high x 90cm wide and 188cm long.
- Lamps on chest of drawers.
- Chest of drawers.



First Floor:

Bathroom

- WC, basin and bath.
- The WC is 39cm high.
- The basin is 79cm high.
- Acrylic bath is 51.5cm high x 170cm x 68cm wide.



Double Bedroom

- On first floor.
- The bed is 59cm high x 152.5cm wide x 188cm long.
- Iron bedstead.

- Bedside tables with lamp on each side.



Garden

- Free access to the large gardens of the house.

Additional Information

- Assistance dogs are welcome at all our cottages.
- Pets other than assistance dogs cannot be accommodated here.
- In the event of a fire, it is the responsibility of the guests to evacuate the building themselves. Vibrating fire/smoke detectors are available if requested at time of booking. Please contact us if you have any other specific access requirements in this respect.

Facilities at all cottages

The National Trust aims to expand the list of accessible /equipment/items available at each cottage and these may include

- Cordless kettle
- Hollowfibre bedding
- Chair with armrests
- Good reading light
- Large handle vegetable peeler
- Easy tin opener
- Non-slip mat for bath/shower
- Non-slip place mat
- Easy jar opener
- Information in alternative formats (on request)

Please note that we cannot guarantee that all items will be available at the time of your visit. Please enquire at the time of booking regarding any particular requests.

Specialist equipment

Other specialist equipment such as wheelchairs, bath seats, toilet frames etc may be available for loan or purchase from the local Red Cross loan centre. Please check this out before booking the Cottage and contact us if you require further information.

<http://www.redcross.org.uk/standard.asp?id=89425>

Future Plans to improve Access to National Trust Holiday Accommodation

- We are currently in the process of writing accessibility guides for all our holiday cottages and bunkhouses and improving access over time for all our guests. All feedback is very helpful in informing us of ways in which we can improve access. We welcome any comments or ideas from you about access at this cottage and thank you for taking the time to do this. Please do this in the most convenient way for you. See contact details below or information on website.

About the Accessibility Guide

- This Accessibility Guide is intended to provide key information about the accommodation that may be particularly relevant to guests with disabilities. Please contact us prior to booking if you would like information that is more specific and we will be happy to oblige.

Email: cottages@nationaltrust.org.uk

Phone: 0344 8002070

Access for All at the National Trust

- The Access for All office works to improve access at all National Trust accommodation and properties. The office welcomes comments and ideas on improving access.

Phone: 01793 818531

Email: accessforall@nationaltrust.org.uk

Date: May 2023