

National Trust Cottages Accessibility Guide

Caragloose Farm House
Veryan
TR2 5PH
Ref: 011076



Introduction

- Caragloose Farm House is a two storey cottage located near Nare Head.
- It is surrounded by National Trust farmland.
- Most of the rooms enjoy spectacular sea views.
- The cottage has night storage heating with Electrorad heaters upstairs, an open fire, a multi fuel stove and oil filled heaters.
- There are laundry facilities in the outbuilding adjoining the cottage.
- The land immediately around the cottage is flat, however the driveway is sloping.
- There is a lawned garden.

The Cottage is arranged as follows:

The sitting room, dining room, kitchen and lavatory are all on the ground floor. There are two bathrooms and three bedrooms on the first floor.

Pre-Arrival

- See the main webpage for booking and location details.
- Please contact us prior to booking if you have any specific access requirements.
- Directions provided with booking.
- Please bring a torch.

Approach

- The cottage is approached via country lanes and sign posted towards Veryan followed by Nare Head.

Arrival & Parking Facilities

- Parking is either directly outside the cottage on a firm level concrete driveway or in the barn at the end of the driveway. This is 30m away across a firm gravel and grass driveway.
- There is an 8m sloping slightly uneven flagstone path leading to the cottage from the driveway.
- The key safe is on the wall to the left hand side of the door 1420mm (from floor level). It is operated by a combination lock mechanism.
- There is an outside light over main entrance and pathway.



Parking in the barn



Washing line adjacent to driveway parking

Getting in (and out) of the cottage

- The main door has a clear opening width of 830mm.
- There is a 7cm high wooden threshold at this entrance.
- This door leads directly into the dining room.
- There is a further door from the hall leading to the garden.
- This door is 920mm wide with a 90mm metal and stone threshold. Four even stone steps 120-170mm high descend to the garden. There is a metal handrail.



Main entrance door

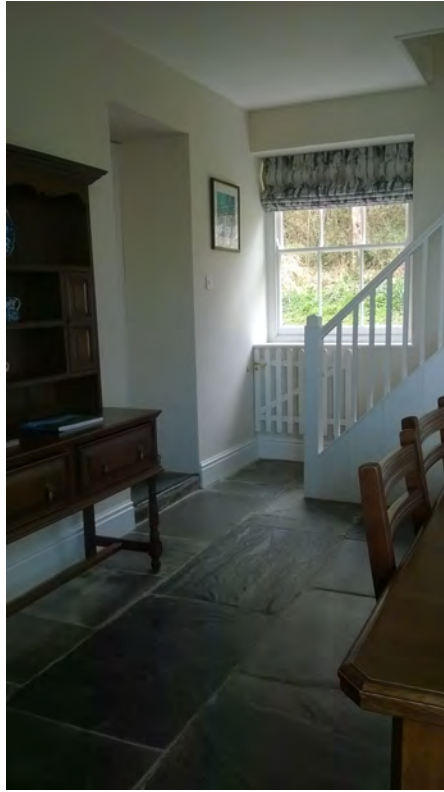




Door from back hall leading to garden

Getting around the cottage

- There is a slate flagstone floor in the dining room, hall, lavatory and kitchen.
- There is a vinyl floor in the bathrooms.
- There is carpet in the sitting room, bedrooms, stairs and landing.
- There is uneven access on each floor.
- Internal doors clear opening widths range from 700-730mm.
- 15 stairs rise from the dining room to the first floor with a wooden hand rail.
- A fixed stair gate is in place at the bottom of the stairs



Stairs



Landing

Ground Floor

Dining Room

- The main entrance leads directly into the dining room.
- There is a window to the front with sea views and to the rear overlooking the driveway..
- There is a central light fitting and one table lamp and one standard lamp.
- There is a multi fuel stove.
- There is a winged armchair with a seat height of 450mm.
- There is a dining table and six chairs
- The table has knee clearance of 600mm. The dining chairs are 450mm high.
- Three steps each 140mm high lead to the hall. The passageway narrows to 680mm wide.
- Stairs rise to the first floor.





Steps from dining room to hall



Steps from dining room to sitting room

Sitting Room

- The sitting room is approached from the dining room.
- There are two stone steps into the room which are 100mm high.
- There are windows to the front and side with sea and garden views.
- There is one central light fitting, two table lamps and a standard lamp.
- There is an open fire.
- There are two sofas with a seat height of 520mm and one winged armchair with a seat height of 440mm.
- There is a TV and separate DVD player.
- There is a DAB Radio.



Hall

- Approached from dining room, further doors to kitchen and lavatory.
- Door leading to the garden.

Lavatory

- The lavatory is off the hall.
- The WC is 450mm high.
- The basin is 790mm high.
- There is a central ceiling light fitting.

Kitchen

- Directly off the hall next to the lavatory.
- Windows to front and rear with sea & garden views.
- The height of worktop is 910mm.
- There is an electric cooker with ceramic hob with controls to front which is 900mm high.
- There is a fridge freezer, dishwasher, microwave, cordless kettle and toaster.
- There are 7 recessed ceiling lights and under cupboard lighting.



First Floor

Main Bathroom

- The bathroom is off the landing next to the double bedroom.
- The bath is standard size.
- The basin is 830mm high.
- The WC is 440mm high.
- There is a step into the shower cubicle which is 130mm high.

National Trust

- The shower measures 780mm x 740mm.
- There is a central ceiling light fitting and shaver light.
- There is a chair in the bathroom. Its seat is 460mm high.



Double Bedroom

- The double bedroom is off the landing next to the bathroom with the shower cubicle.
- There is a centralised Zip & Link double bed 1830mm wide x 1900mm long x 620mm high which can be twins on request.
- The clearance underneath the beds is 40mm.
- There is a bedside table on either side of the bed. These are 710mm high and have table lamps.
- There is a wardrobe with a clothes rail at 1400mm ffl.
- There is also a central ceiling light.
- There is a chair with a seat height of 450mm.



Twin Bedroom

- There is a twin bedroom off the landing between the double bedroom and the second bathroom.
- There are two single beds 900mm wide x 1900mm long x 640mm high which can be zipped together to form a double bed on request.
- The clearance underneath the beds is 50mm.
- There are two bedside tables which are 710mm high with table lamps.
- There is also a central ceiling light.
- There is a wardrobe with a clothes rail at 1590mm ffl.
- There is a chair with a seat height of 450mm.



Second Bathroom

- The bathroom is off the landing between the two twin bedrooms.
- There is 200mm step on the landing down to the bathroom and third bedroom.
- The bath is a standard size and has a shower head attachment to the taps.
- The basin is 800mm high.
- The WC is 430mm high
- There is a central ceiling light fitting and shaver light.
- There is a chair with a seat height of 450mm.



Step on landing

Twin Bedroom

- The second twin bedroom is off the landing next to the second bathroom.
- There are two single beds 900mm wide x 1900mm long x 630mm high.
- The clearance underneath the beds is 50mm.
- There beds are divided with a bedside table which is 690mm high
- There is a central ceiling light and a table lamp.
- There is a wardrobe with a clothes rail at 1540mm ffl.



Laundry Room

There is a washing machine and tumble dryer and an additional fridge/freezer in an out building adjoining the cottage. This room is approached from the main path leading to the cottage. There is a 190mm high stone step into this room; the door is 760mm wide.



Garden

- The large garden is mainly to the front of the cottage and enjoys spectacular sea views.
- The area is mainly grass with some bushes and trees gently sloping to a barbeque area.
- There is a table with fixed bench seating and two separate wooden chairs in front of the dining room and a further bench seat positioned to enjoy the views. There are also portable chairs for the garden.



Additional Information

- Assistance dogs are welcome at all our cottages
- In the event of a fire, it is the responsibility of the guests to evacuate themselves. Vibrating fire/smoke detectors are available if requested at time of booking. Please contact us if you have any other specific access requirements in this respect.

Facilities at all cottages

The National Trust aims to expand the list of accessible /equipment/items available at each cottage and these may include

- Cordless kettle
- Hollowfibre bedding
- Chair with armrests
- Good reading light
- Large handle vegetable peeler
- Easy tin opener
- Non-slip mat for bath/shower
- Non-slip place mat
- Easy jar opener
- Information in alternative formats (on request)

Please note that we cannot guarantee that all items will be available at the time of your visit. Please enquire at the time of booking regarding any particular requests.

Specialist equipment

Other specialist equipment such as wheelchairs, bath seats, toilet frames etc may be available for loan or purchase from the local Red Cross loan centre. Please check this out before booking the Cottage and contact us if you require further information.

<https://www.redcross.org.uk/get-help/borrow-a-wheelchair>

<https://www.redcross.org.uk/get-help/hire-a-toilet-aid>

Future Plans to improve Access to NT Holiday Cottages

- We are currently in the process of writing Accessibility Guides for all our holiday cottages and improving access over time for all our guests. All feedback is very helpful in informing us of ways in which we can improve access to all our cottages. We welcome any comments or ideas from you about access at this cottage and thank you for taking the time to do this. Please do this in the most convenient way for you. See contact details below or information on website.

About the Accessibility Guide

- This Accessibility Guide is intended to provide key information about the cottage that may be particularly relevant to guests with disabilities. Please contact us prior to booking if you would like information that is more specific and we will be happy to oblige.
Email: holidays.enquiries@nationaltrust.org.uk

Access for All at the National Trust

- The Access for All office works to improve access at all National Trust cottages and properties. The office welcomes comments and ideas on improving access.
Phone: 01793 818531
Email: accessforall@nationaltrust.org.uk

Date August 2022