

National Trust

National Trust Cottages Access Guide

Chaplain's House
Tyntesfield
Wraxall
Bristol
BS48 1NX



Property Ref 003031

Introduction

Chaplain's House is situated on the Tyntesfield Estate and adjoined to another holiday cottage, Chaplains Lodge. It is accessed via the main visitor entrance drive to the estate and off a single lane level tarmacked road.

There is gas central heating, a coal fire in the living room and a heated towel rail in the bathroom.

Chaplain's House is spacious and arranged over 3 floors with additional steps in some of the rooms. The property comprises of the following:-

- Ground Floor - formal dining room, living room, toilet, and a double bedroom
- Lower Ground Floor - breakfast room and kitchen (plus separate scullery)
- First Floor - master double bedroom, twin room and bathroom (with bath and mains shower)
- Garden- there is a private landscaped garden on different levels with slopes and steps that adjoins the estate gardens.
- There is parking for two cars.

The cottage is furnished in the Gothic Revival style and is suitable for children.

Pre-Arrival

- See the main webpage for booking and location details.
- Please contact us prior to booking if you have any specific access requirements.
- Directions provided with booking

Approach

- The house is approached from the main visitor entrance drive. It is signposted off the main drive to the left. The lane is a level, single carriageway road and only used by estate vehicles. Cars are not permitted beyond the house.

Arrival & Parking Facilities

- The house is situated on the right of the lane and is the first (and only) pair of cottages before the bend. Chaplains House is the second of the two
- There is fine-gravelled parking past the house for two cars next to the lane
- The front door is from the lane and via the level path
- A key box with a press combination lock is on the left by the front door, height 1650mm
- There is outside lighting but you may need a torch if you are arriving after dark



Getting in (and out) of the cottage

- Flat concrete path from the lane to the front door that is 1280mm wide
- Front door width 910mm, height 2100mm
- Step up 150mm with a threshold tread of 340mm before a drop into the hall 40mm
- Hallway is at right angles to the front door, width 1200mm, length 1660mm
- Door to the inner hall from the hall, width 970cm
- The floor is heavy duty linoleum.

Getting around the cottage

Ground floor:

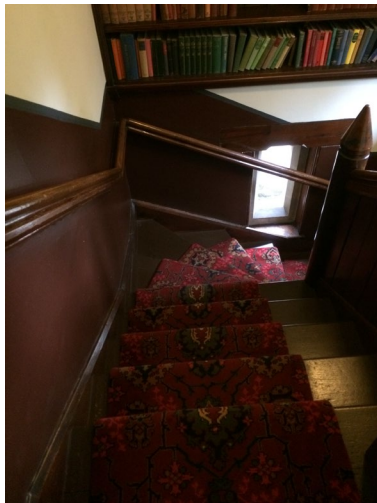
- The flooring in the inner hallway and downstairs toilet are heavy duty lino with no thresholds between rooms (except the living room)
- All other flooring is relatively even dark wooden floorboards with rugs on anti-slip mats
- Three steps down to a back lobby area step length, 1220mm, tread width 310mm, height 170mm. Door to the living room, on the left and at right angles
- The back lobby area is 1670mm in length and 980mm in width

First floor:

- Half turn wooden stairs with angular winders to the first floor with central carpet runner
- Step length of 1150mm, height 170mm and central tread of 240mm
- Wooden handrail and a central banister
- Stairwell with dual aspect windows and pendant light
- Doorway at top of the stairs, width 760mm leading at right angles onto a landing, width 820mm

Lower Ground Floor:

- Half turn wooden stairs, with angular winders, to the lower ground floor off the inner hall
- Pendant light, no window
- Central tread width 240mm, height 170mm
- Wooden hand rail
- Stairs lead down to a black and red quarry tiled wide hall, width 1330mm



Ground Floor

Sitting Room

- Heavy self-closing fire door width 880mm, no threshold
- Relatively even, dark wooden floor, rugs with anti-slip mats underneath
- Open coal fire
- Views over landscaped back garden
- Cushioned window seat, height 420mm, seat depth 370mm
- 2 seater settee, seat height 470mm
- Two winged-back chairs, seat height 490mm
- Leather armchair, seat height 370mm
- Armchair, seat height 470mm



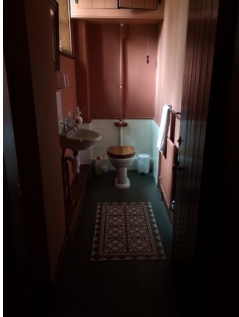
Formal Dining Room

- Door width 830mm, no threshold
- Relatively even dark wooden floor, rugs with anti-slip underlay
- Long formal dining table, height 740mm, clearance height 610mm
- 11 wooden chairs with integral leather cushioned seat pads. Seat height 480mm
- 2 x sideboards
- Dual aspect windows, one low level, overlooking the back and side gardens
- Pendant light over table
- Circulation around table approx. 760mm



Toilet

- Door width 760mm
- Continuation of heavy duty linoleum from hall
- Long room toilet at the end and wall mounted sink to the left
- Minimum circulation width 600mm
- Toilet height of 420mm with a high pull chain flush
- Wall mounted small sink bowl, twist taps



Double Bedroom

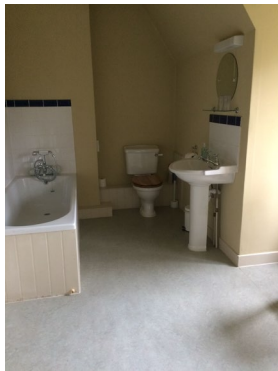
- Dark wood relatively even floorboards, rugs on anti-slip underlay
- Door width 830mm, no threshold
- Low level window with views over the side garden
- Double divan bed 2000mm by 1500mm with a height of 530mm
- Mirrored wardrobe, chest of drawers, fitted cupboard
- 2 x wooden chairs with rush seats, seat height 440mm
- Nursing chair, seat height 320mm
- 2 x bedside tables and lamps with push on/off switches under the lampshade
- Pendant light
- Room circulation from end of the bed to the drawers 660mm
- Room circulation from side of bed to wall 1300mm



First Floor

Bathroom

- Door width 770mm, no threshold
- Linoleum floor
- Window over side garden
- Bath with hand held shower attachment with mixer twist taps
- Bath height 550mm, space beside bath 800mm
- Mains water double shower unit with mixer twist taps, step up to shower 150mm
- Sink height 800mm with twist taps
- Toilet height 420mm with lever handled flush



Master Bedroom

- Door width 720mm
- Upon entering there are two carpeted steps downwards with variable heights of 120mm and 140mm, tread 270mm
- Light coloured carpet
- Half poster antique bed length 2300mm, width 1500mm height 600mm
- Under bed space height of 230mm
- Sloping ceiling with restrictive head height in places
- 2 x bedside tables with lamps that have push on/off switches under the lampshade
- Suitcase rack
- A range of fitted wardrobes



Twin Room

- Door width 740mm & threshold
- Wood flooring, rug with anti-slip underlay
- 2 x metal single beds width 900mm, length 200mm height 700mm, space underneath 380mm
- Bedside tables and lamps
- Wardrobe with integral mirror, chest of drawers
- 2 x chairs with cushioned seat pads, seat height 460mm
- Window over side garden
- Sloping restrictive ceiling heights

Lower Ground Floor

Breakfast Room

- Door width 610mm
- Quarry tiled black and red floor
- Window over side garden
- Wooden breakfast table height 780mm, height clearance under table 610mm
- 4 x elm chairs seat height 460mm
- 1 x Windsor chair with arms, seat height 460mm
- 1 x armchair, seat height 480mm
- Suffolk latch door handle

Kitchen

- Hallway leads into kitchen, no door
- Quarry tiled black and red floor
- Spacious kitchen with good circulation
- Wood units with slate worktop with a height of 910mm
- Dishwasher, electric oven with ceramic hob, washer dryer, fridge/freezer
- Sink with mixer and twist taps
- Large wooden dresser
- Back door with a width of 840mm with a 130mm stone step down into the inner courtyard
- Windsor chair with arms and a seat height 460mm



Garden

- Step down with a height of 90mm out of inner courtyard to gravel path of the garden
- The garden is landscaped with topiary, lawns and has levelled areas and slopes plus steps.
- There is a wooden bench and a wooden hexagonal table with clearance height of 700mm and a fixed seating height of 460mm with leg clearance of 240mm.
- The garden can also be accessed from parking area, through a metal gate with a width of 1180mm and down a gently sloping compacted gravel path



Additional Information

- Assistance dogs are welcome at all our cottages
- In the event of a fire, it is the responsibility of the guests to evacuate themselves. Vibrating fire/smoke detectors are available if requested at time of booking. Please contact us if you have any other specific access requirements in this respect.

Facilities at all cottages

The National Trust aims to expand the list of accessible /equipment/items available at each cottage and these may include

- Cordless kettle
- Hollowfibre bedding
- Chair with armrests
- Good reading light
- Large handle vegetable peeler
- Easy tin opener
- Non-slip mat for bath/shower
- Non-slip place mat
- Easy jar opener
- Information in alternative formats (on request)



Please note that we cannot guarantee that all items will be available at the time of your visit. Please enquire at the time of booking regarding any particular requests.

Specialist equipment

Other specialist equipment such as wheelchairs, bath seats, toilet frames etc may be available for loan or purchase from the local Red Cross loan centre. Please check this out before booking the Cottage and contact us if you require further information.

<http://www.redcross.org.uk/standard.asp?id=89425>

Future Plans to improve Access to NT Holiday Cottages

We are currently in the process of writing access guides for all our holiday cottages and improving access over time for all our guests. All feedback is very helpful in informing us of ways in which we can improve access to all our cottages. We welcome any comments or ideas from you about access at this cottage and thank you for taking the time to do this. Please do this in the most convenient way for you. See contact details below or information on website.

About the Access Guide

This Access Guide is intended to provide key information about the cottage that may be particularly relevant to guests with disabilities. It is reviewed annually. Please contact us prior to booking if you would like more detailed information and we will be happy to oblige.

Phone: 0344 800 2070

Email: cottages@nationaltrust.org.uk

Access for All at the National Trust

We continue to work to improve accessibility at all our holiday cottages. We welcome comments and ideas on improving access.

Phone: 0344 800 2070

Email: cottages@nationaltrust.org.uk

Date 07 April 2018