

## National Trust Cottages Accessibility Guide

### Compass Cottage

Castle Road,  
Dartmouth,  
Devon,  
TQ6 0JN

Ref: 012048



### Introduction

Compass Cottage is situated in woodland overlooking the banks of the mouth of the River Dart. It is traditional on the outside and contemporary and spacious on the inside. The property is arranged over three floors and sleeps up to five people over three bedrooms.

On the first floor there is a bathroom with single and double bedrooms. On the second floor there is master bedroom with an en-suite shower room. The property has good to moderate circulation, high ceilings and good light levels on the ground floor.

The property has an air source heat pump for heating and hot water.

The cottage is arranged as follows:

#### Ground Floor:

Large open plan kitchen with dining table, open sitting area, with a door to a utility room.

#### First Floor:

One double bedroom (with king-sized bed) and one single bedroom family bathroom with shower over the bath.

#### Second Floor

One double bedroom (with king-sized bed) with en-suite shower room

#### Pre-Arrival

- See the main webpage for booking and location details.
- Please contact us prior to booking if you have any specific access requirements.
- Directions provided with booking

## Approach

The property is approached and signposted off a main road via well-maintained undulating and winding country lanes. The lanes can be bounded by hedgerows and vegetation covered stone walls. The lanes can be narrow but there are plenty of passing spaces. The property can also be approached by foot with the coastal footpath going past the cottage. The final stretch of lane approaching the property is steep with no passing places and steep drops to the coastal side of the lane. The lane is potholed in places so guests are advised to take care.

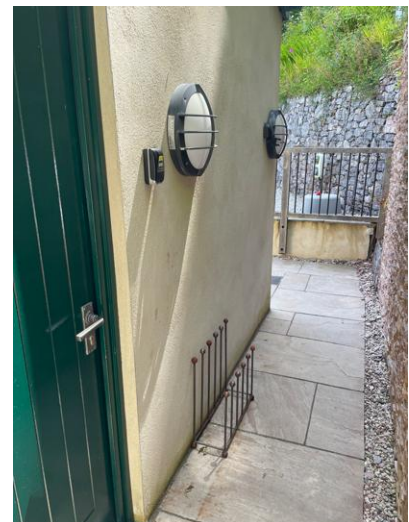
## Arrival & Parking Facilities

- There is off-road, gravelled parking for two cars directly by the side of the property. Two wide steps 1830mm wide height 150mm and tread 380mm lead to a passage-way to the kitchen door.
- There is an EV charger outside the property. If guests are using the charger, they are asked to park as far as possible from the side of the building.
- There is outside lighting by the parking and entrance, but if arriving after dark, it is advisable to bring a torch.



## Getting in (and out) of the cottage

- There is a dial combination key box located by the entrance door by the kitchen at a height of 1400mm.
- The main door width is 750mm and there's a threshold height of 30mm, then 50mm height into the kitchen area
- The entrance leads into the open plan kitchen area, with laminate flooring throughout.
- To the front of the property, leading up from the lane, there is a side gate with a step of 170mm height by 1000mm width that leads to the original front door (width 470mm) which leads directly into the utility room.
- There is a door leading into the sitting room area from the utility (width 720mm)



## Getting around the cottage

### Ground floor

#### Kitchen

- Laminate flooring
- Height of worktop 920mm
- Fitted kitchen with electric double oven and ceramic hob, integral fridge, integral dishwasher, integral microwave at a height of 1550mm
- Height of extractor fan over hob 1165mm
- Sink with mixer lever taps
- Kitchen table height 770mm space underneath 740mm
- Six wooden and rattan seated chairs with a set height of 460mm
- Two large and two smaller ship cargo lights (pendant style)
- Casement window with views of the lane, mouth of the River Dart and coastline
- Kitchen door width 750mm
- One slight step up, height 30mm, tread 340mm then 50mm height leading to outside passageway
- Moderate circulation



#### Living area

- Level threshold door width 701mm
- Continuation of the laminate floor, rug, 2 x two-seater sofas with a seat height of 460mm
- One leather chair seat height of 460mm
- Two pendant lights
- Casement windows with views of the lane, mouth of the River Dart and coastline.
- Nest of four tables with two lamps and switches on the cable.
- Ornamental fireplace - not suitable for a fire.
- TV on a chest of drawers height 740mm
- Good circulation

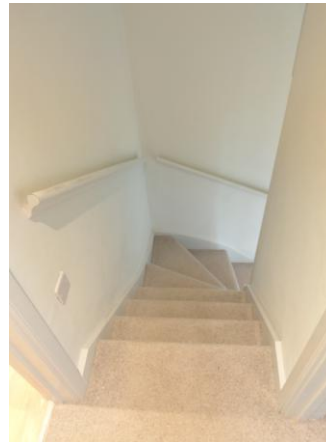


## Utility room

- Door from the living room leads through to the utility area
- Stable door to the outside side area width 650mm
- Laminate flooring
- Washer-dryer
- Sink with mixer twist taps
- Worktop height 930mm
- Fridge-freezer
- Bank of hooks height 1550mm
- Casement windows with views of the lane and the mouth of the River Dart.
- Utility cupboard
- Moderate circulation



## Stairway to first floor



- Angular carpeted stairs directly from the sitting room (760mm wide tread 240mm, height 250mm)
- Wooden painted handrail (1140mm height)
- Main landing width 780mm, by 1150mm continuation of carpet, recessed lighting, leading to bathroom
- Poor circulation in this area.
- Please be aware that there are no stairgates at Compass Cottage.

## Bathroom



- Bathroom door width 760mm, level threshold
- P-shaped bath with electric shower overhead (please note, there are no handrails on the bath). Shower unit half enclosed by swivel perspex screen
- Toilet with seat height 420mm and push flush mechanism
- Sink unit (850mm) with mixer taps
- Mirror unit above sink
- Towel rail
- Window towards back of the property with privacy glazing
- Laminate flooring
- Recessed spotlights

## Double Bedroom



- Access through a fire door, width 700mm
- Continuation of landing carpet, level threshold bedroom, door width 740mm
- King size bed width 1500mm length 2000mm 600mm height with clearance underneath 390mm
- 2 side tables and two lamps with on/off switches on the cable.
- Ceiling pendant light

- Free standing wardrobe with two doors key height 1000mm
- Ornamental fireplace not for use.
- Poor circulation

## Single Bedroom

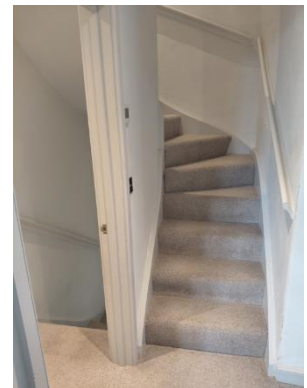
- Continuation of first floor landing carpet level threshold
- Door width 750mm
- Emergency fire door exit onto flat roof area width 620mm
- Single bed (1060mm width 2030mm length 820mm). This bed has a height of 360mm with clearance underneath – **NB this is unusually high, step provided and stored under the bed.**
- Dressing table with mirror width (530mm, length 1130mm, 800mm height)
- One table lamp with cable switch
- Clothes hooks height 1720mm
- Ceiling pendant light
- Casement windows with views of the mouth river Dart and coastline beyond
- Poor circulation



## Second floor

### Stairway to second floor

- Angular carpeted stairs leading from the first-floor landing
- Recessed lighting
- 760mm wide tread 240mm height 250mm
- Wooden painted handrail 1140mm height
- Built-in wardrobe with door (width of 700mm) in small landing area at the top of the stairs. Light automatically comes on for this wardrobe.



### Double bedroom

- Bedroom door width 630mm with continuation of carpeted area from small landing.
- King size bed width 1500mm length 2000mm height 600mm clearance underneath 220mm
- Two bedside chests with two table lamps with switches on the cable
- One large chest with drawers
- Sloping ceiling but not restrictive
- One velux window with restrictor cable overlooking the sea, lane and woodland area
- Two ceiling pendants.

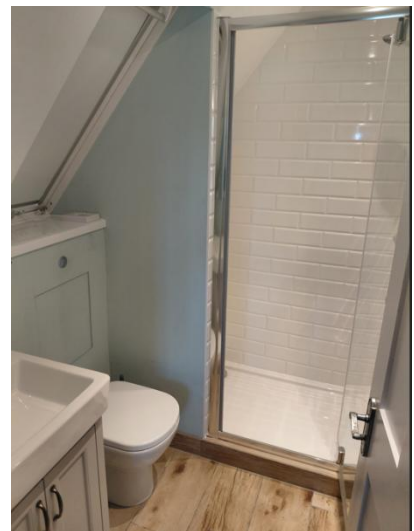
# National Trust

- One captain's chair with a seat height of 460mm
- Casement windows with views of the mouth of the river Dart and coastline beyond
- Poor circulation



## Ensuite shower room

- Shower room door width 650mm
- Sink unit with height of 860mm
- Mixer twist handle taps with washers
- Mirror to the side of the sink at a height of 1150mm
- Toilet with a seat height of 430mm with push flush
- Shower with swivel door width 630mm
- Off the mains shower cubicle with controls at a height of 1170mm
- Velux window overlooking the parking area and woodland
- Laminate flooring
- Recessed lights
- Poor circulation

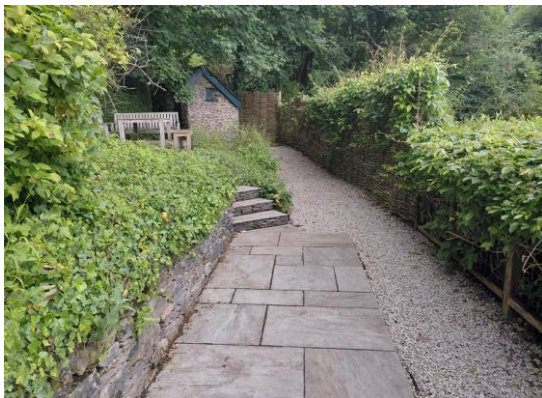
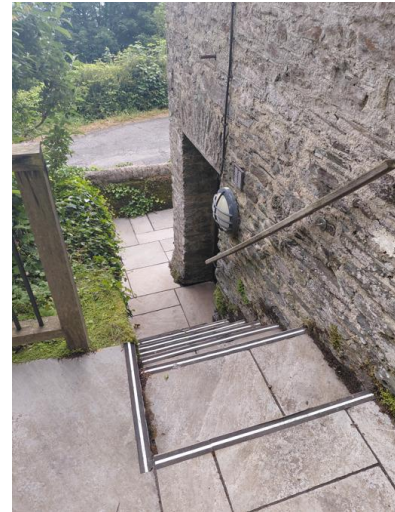


## Garden

- Main access to the garden is via the utility room stable door.
- Access is also available through a side gate accessed from the road (width 1000mm in the lane with a step height of 170mm)
- Paved side steps height 260mm tread 280mm with a handrail with a height of 900mm leading to the first level
- To the left of the steps is the emergency fire exit area with a gate width of 600mm step of height 170mm. The emergency fire door has a step height of 380mm and tread 470mm
- Rear garden with paved steps and a raised terrace, surrounded by woodland, lower gravel path with bench with a seat height of 430mm
- Rail height of 1000mm

# National Trust

- Paved angular steps height 150mm tread approximately 330mm to main sitting area with two benches and a large table. Bench height 430mm. Table height 720mm and underneath area height of 640mm



## Additional Information

### Facilities at all cottages

The National Trust aims to expand the list of accessible /equipment/items available at each cottage and these may include

- Cordless kettle
- Hollowfibre bedding
- Chair with armrests
- Good reading light
- Large handle vegetable peeler
- Easy tin opener
- Non-slip mat for bath/shower
- Non-slip place mat
- Easy jar opener
- Information in alternative formats (on request)



# National Trust

Please note that we cannot guarantee that all items will be available at the time of your visit. Please enquire at the time of booking regarding any particular requests.

## Specialist equipment

Other specialist equipment such as wheelchairs, bath seats, toilet frames etc may be available for loan or purchase from the local Red Cross loan centre. Please check this out before booking the Cottage and contact us if you require further information.

<https://www.redcross.org.uk/get-help/borrow-a-wheelchair>

<https://www.redcross.org.uk/get-help/hire-a-toilet-aid>

## Future Plans to improve Access to National Trust Holiday Accommodation

- We are currently in the process of writing accessibility guides for all our holiday cottages and bunkhouses and improving access over time for all our guests. All feedback is very helpful in informing us of ways in which we can improve access. We welcome any comments or ideas from you about access at this cottage and thank you for taking the time to do this. Please do this in the most convenient way for you. See contact details below or information on website.

## About the Accessibility Guide

- This Accessibility Guide is intended to provide key information about the accommodation that may be particularly relevant to guests with disabilities. Please contact us prior to booking if you would like information that is more specific and we will be happy to oblige.  
Email: [holiday.enquiries@nationaltrust.org.uk](mailto:holiday.enquiries@nationaltrust.org.uk)  
Phone: 0344 8002070

## Access for All at the National Trust

- The Access for All office works to improve access at all National Trust accommodation and properties. The office welcomes comments and ideas on improving access.  
Phone: 01793 818531  
Email: [accessforall@nationaltrust.org.uk](mailto:accessforall@nationaltrust.org.uk)

Date: June 2026