

Accessibility Guide

Curlew

How Hill Cottages

How Hill Road

Ripon

HG4 3AP



What3Words:

/// obviously.nipping.copiers

Brochure ref: 020026



Introduction

Situated less than a mile from Fountains Abbey, a World Heritage site with spectacular ruins of a 12th-century Cistercian abbey, the cottages at How Hill are situated around a courtyard and have been converted from a group of 18th-century farm buildings. The tower on the hill behind the cottages is believed to have been originally built as an outlying chapel for the Abbey. It was restored by John Aislabie, when he owned the Estate, and rumour has it that he used it as a gambling den. The farm buildings at the side of the tower were added at a later date and the property was occupied until the 1950s.

These farm buildings have been sympathetically restored using traditional materials whilst incorporating modern green technology such as the use of Ground Source Heat Pump in the heating system. The cottage has generous living space for 6 has central heating, a wood-burning stove and shared paved courtyard around which it is situated.

The Cottage is arranged as follows:

Ground Floor:

- 1 large Double Bedroom, Sitting Room, Kitchen, Toilet, Utility Room with Washing Machine and Tumble Dryer.

First Floor:

- Two Bedrooms and Family Bathroom

Pre-Arrival

- See the main webpage for Fountain Cottage (<https://www.nationaltrust.org.uk/holidays/curlew-yorkshire>) for booking and location details.
- To enable our housekeepers to prepare the cottage for any particular accessibility requirements you might have, please contact guestrelations@nationaltrust.org.uk.
- Directions are provided electronically three weeks prior to travel. If you need a printed (or large print) version of any of our holiday documents, please contact guestrelations@nationaltrust.org.uk.
- If, having read this accessibility guide, you still require further information, e.g. a social storybook guide, please contact guestrelations@nationaltrust.org.uk

Approach

- The cottage is easy to find using the local directions provided by the Contact Centre
- A gentle slope leads from the car-park area to the cottage
- There is a distinct National Trust sign indicating location for How Hill Cottages
- The surrounding area is gently sloped and once away from the cottages it is hilly in places

Arrival & Parking Facilities



- The tarmac car-park is easy to find on turning in from the lane
- The cottages are very well signed
- There is space for the larger mobility vehicle
- Utility areas such as the log and bin stores are found in this area (1 step of 100mm)
- Designated parking for two vehicles directly outside the cottage, which is on a slope.

Getting in (and out) of the cottage



Slope up to Main entrance

Main Entrance door
showing 1st floor bedroom
door beyond

Getting around the cottage

Ground floor:

- Through main door into a small lobby – straight ahead through door to Double Bedroom, with en-suite.
- Left door to Sitting Room and Kitchen.
- Off the lobby to the right is the utility room with washing machine & tumble dryer
- Right through door for staircase to first floor

Ground floor Toilet

- WC, basin
- The WC 480mm high

Kitchen

- Height of worktop is 910mm
- Dishwasher, Microwave, Toaster, Kettle, Double oven with 4 ceramic hobs, stand-alone Fridge and stand-alone Freezer. Side Board





- **Dining Room**
- Table with 6 chairs – no arms
- **Sitting Room**
- Open-plan with Large Sofa, Small sofa, 2x Armchair, TV & Hi-Fi, Coffee table & Fireplace with guard. Small nest of tables

Double Bedroom – Super-king can be split to two singles

- 2 Armchairs, sofa duck egg colour, blanket box
- 2 Side tables with lamps, large sideboard, Large wardrobe Coffee table , mirror
- Wooden Towel stand in bedroom.
- En-suite wetroom





Other Rooms

Laundry room with Washing Machine & Tumble Dryer

First floor:

- Two Double bedrooms and Family Bathroom



Twin Bedroom – 1st Floor

- 1 side table with 2 lamps between the beds. Chest of drawers with mirror plus 1 wardrobe

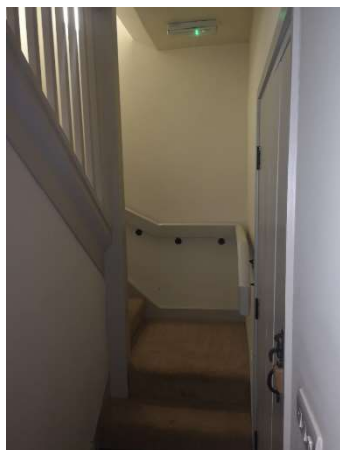
Double Bedroom – 1st Floor

- 1 Armchair, 1 Wooden Chair Chest of drawers with mirror, Wardrobe
- 2 Side tables with lamps. Wooden Towel Rail



Bathroom – 1st Floor

- Door is 800mm wide
- Bath 590mm high with shower attachment on taps
- The WC is 400mm and basin 830mm high



Stairs to 1st Floor

Courtyard



- Mostly level tarmac area. Picnic benches for each cottage.
- Paving stones are well maintained with level mortar-joints.
- Laundry room for shared use (step of 100mm)

Access to courtyard through patio doors in lounge/dining room.



Additional Information

- Assistance dogs are welcome at all our cottages. If you are bringing an assistance dog to a non-dog cottage, please contact guestrelations@nationaltrust.org.uk so we may contact all future guests in case of an allergy.
- In the event of a fire, it is the responsibility of the guests to evacuate themselves. Under pillow vibration alarms are available if requested at time of booking.
- If you required the WiFi to be turned off, please advise us in advance.
- If you have any allergies, please contact guestrelations@nationaltrust.org.uk.

Specialist equipment

Other specialist equipment such as wheelchairs, bath seats, toilet frames, hoists etc. may be available for loan or purchase from a local disability equipment provider. For further details, please contact guestrelations@nationaltrust.org.uk. Please note that any contacts supplied are done so in good faith and are not endorsed by the National Trust.

Feedback

All feedback is very helpful in informing us of ways in which we can improve access to all our accommodation. We welcome any comments or ideas from you to guestrelations@nationaltrust.org.uk.